



**HIGHWAY FACTORS GROUP CHAIRMAN'S  
FACTUAL REPORT**

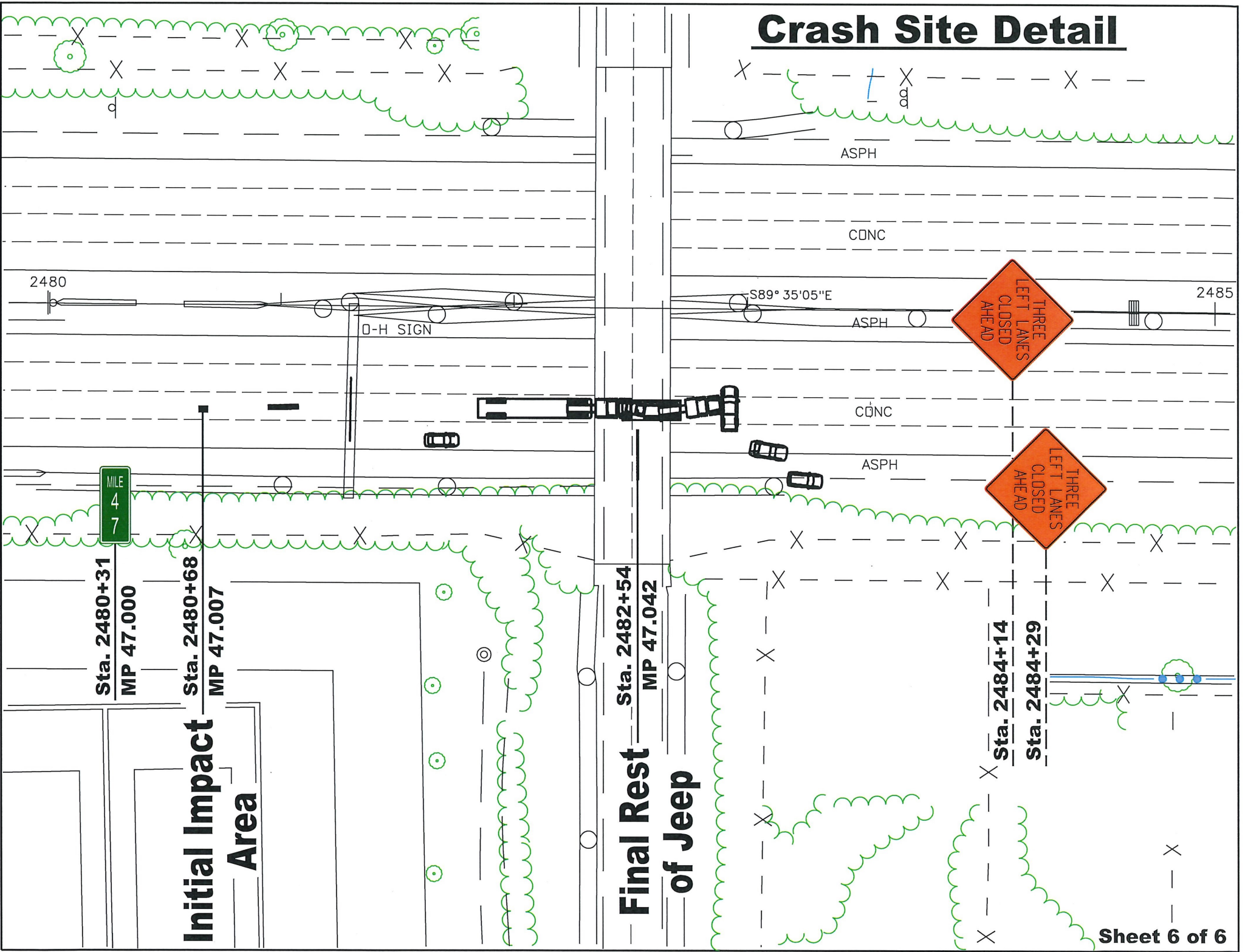
**Highway Attachment 8 – ITD Detail Drawings of Work Zone with Crash Site Detail**

**Boise, Idaho**

**HWY18FH015**

( 7 pages)

# Crash Site Detail

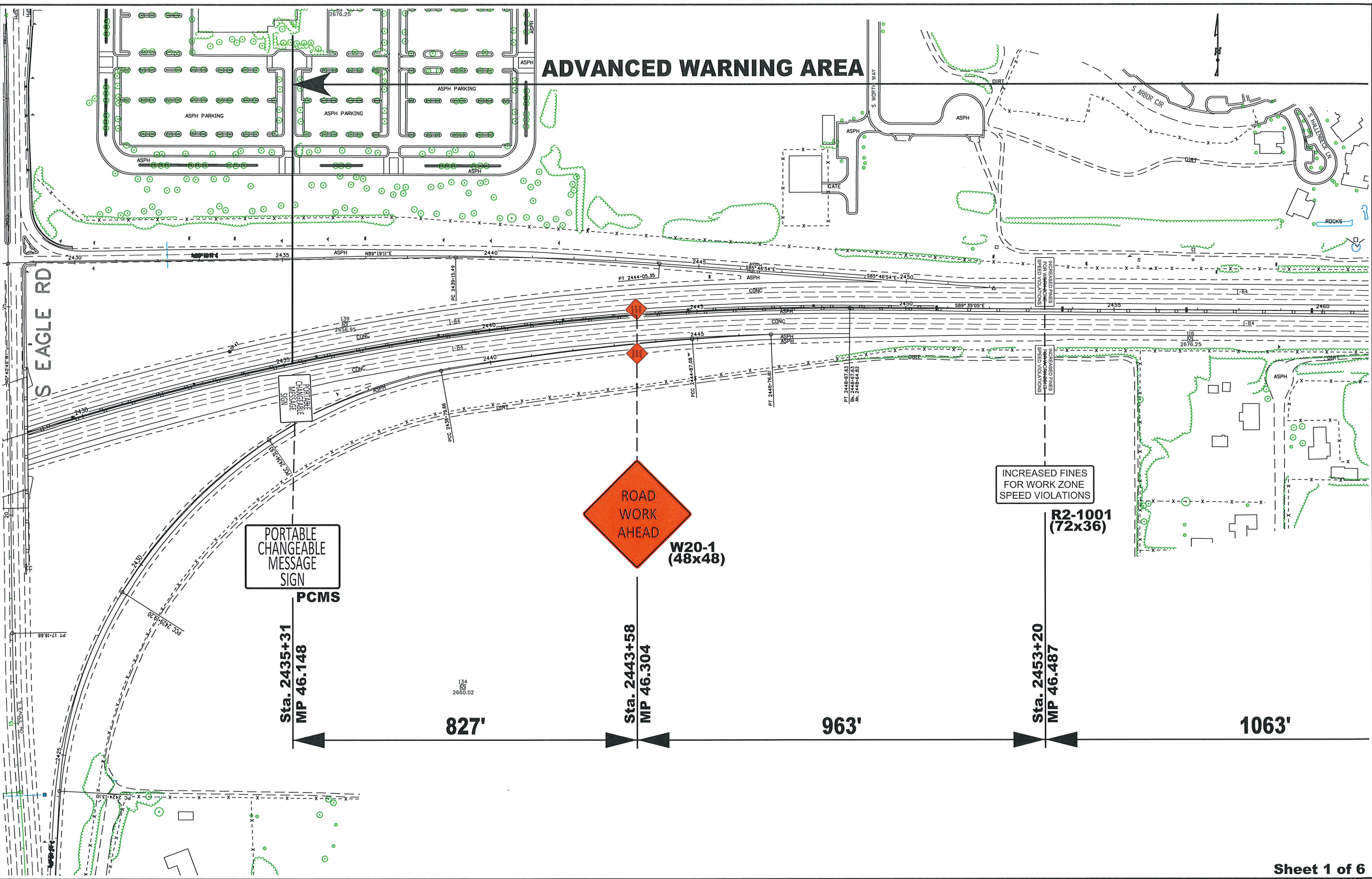


**Initial Impact Area**

**Final Rest of Jeep**



# ADVANCED WARNING AREA



PORTABLE  
CHANGEABLE  
MESSAGE  
SIGN

PCMS

Sta. 2435+31  
MP 46.148

827'



W20-1  
(48x48)

Sta. 2443+58  
MP 46.304

963'

INCREASED FINES  
FOR WORK ZONE  
SPEED VIOLATIONS

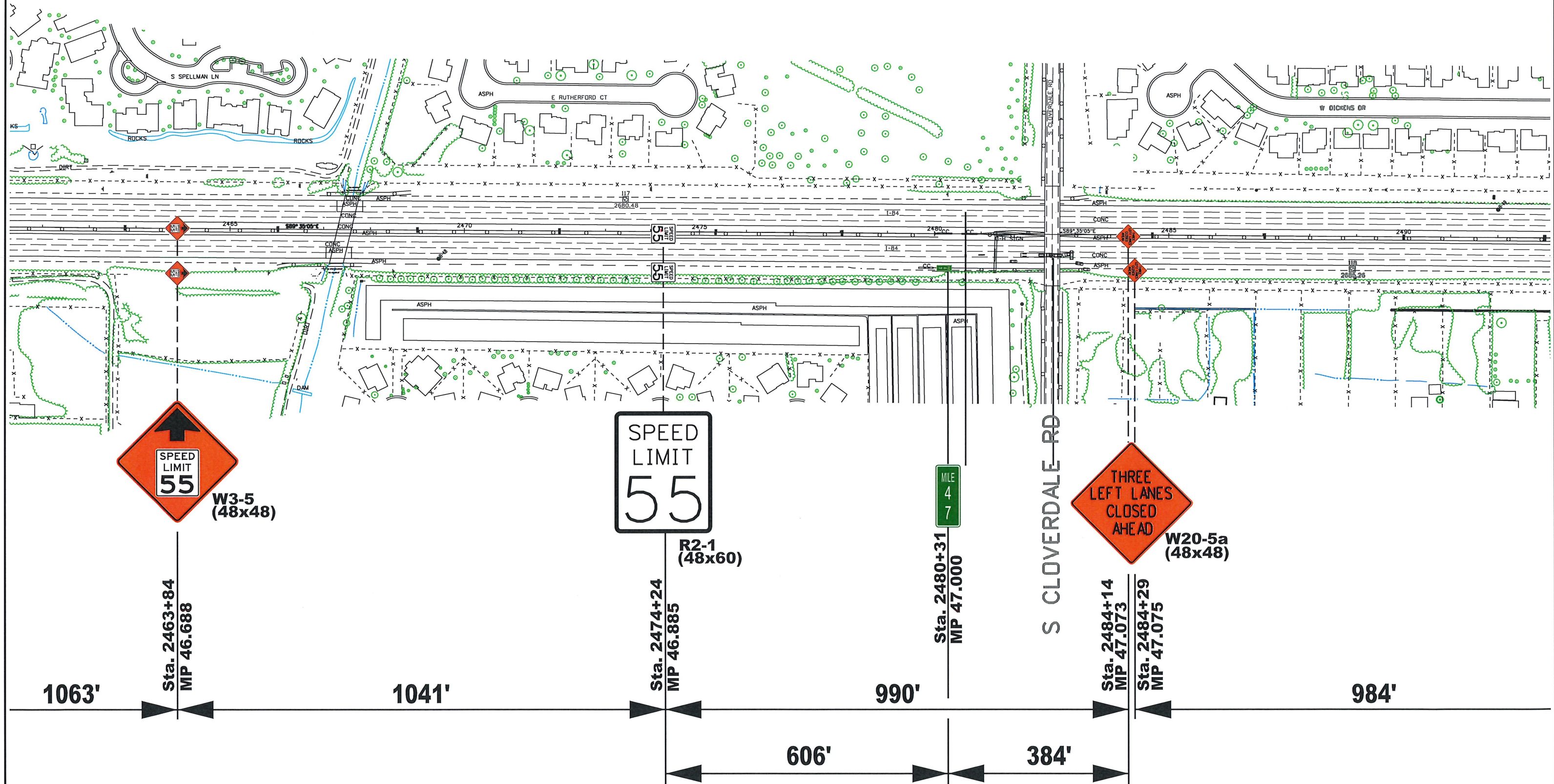
R2-1001  
(72x36)

Sta. 2453+20  
MP 46.487

1063'

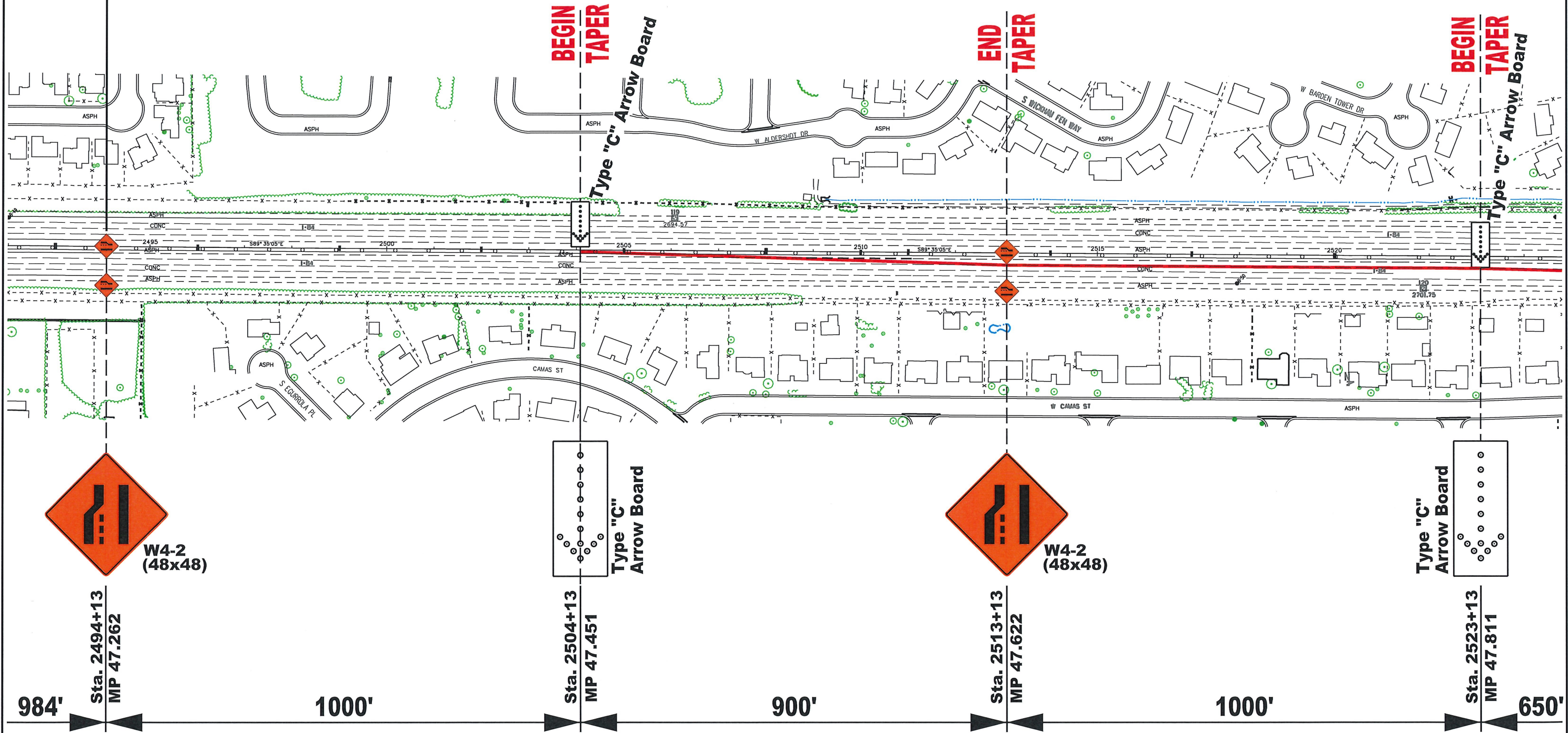


# ADVANCED WARNING AREA



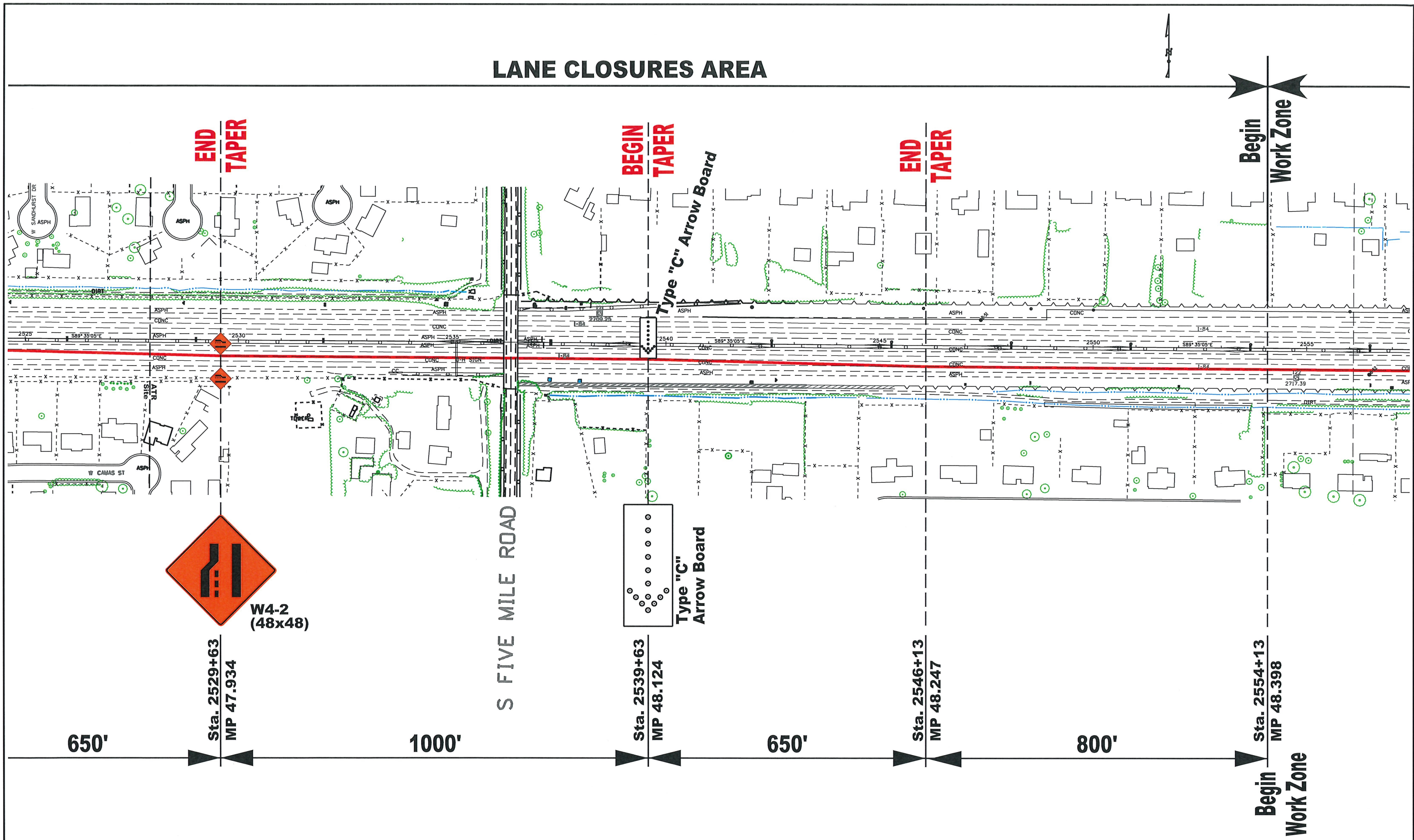


# LANE CLOSURES AREA



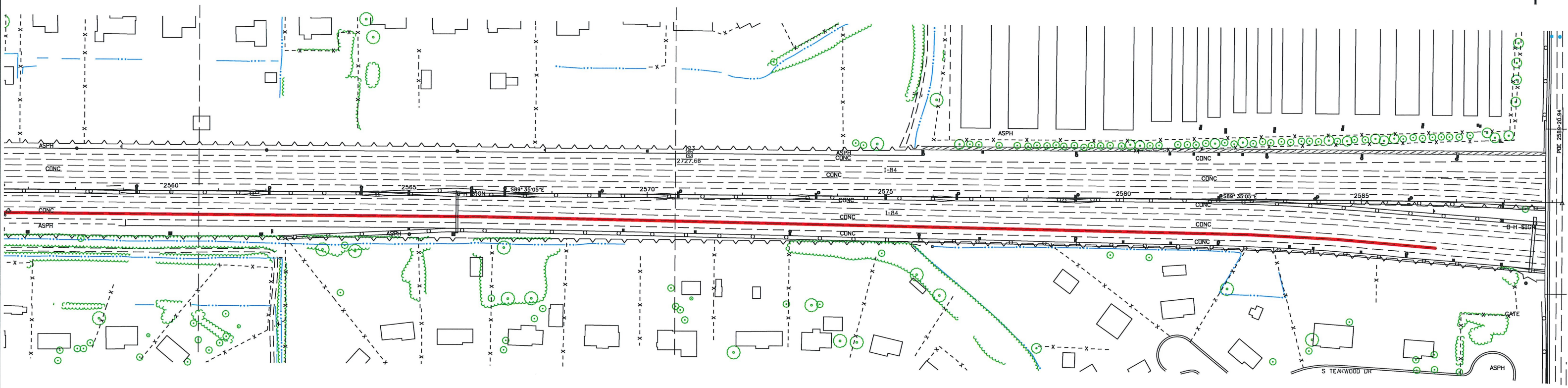
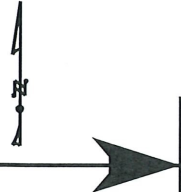


# LANE CLOSURES AREA





# WORK ZONE AREA



S MAPLE GROVE ROAD