

THE NATION'S CHARTMAKER SINCE 1807  
UNITED STATES - EAST COAST

# ST SIMONS SOUND BRUNSWICK HARBOR AND TURTLE RIVER

Scale 1:40,000 at Lat 31° 08'  
North American Datum of 1983  
(World Geodetic System 1984)  
SOUNDINGS IN FEET  
AT MEAN LOWER LOW WATER

Additional information can be obtained at nauticalcharts.noaa.gov  
Formly C625 447, 1st Ed., June 1957 C-1927-451-K4P-246

NAME	PLACE	HEIGHT REFERRED TO DATUM OF SOUNDINGS (MLLW)	MEAN HIGH WATER			MEAN LOW WATER		
			MEAN HIGH WATER	LOW WATER	MEAN LOW WATER	LOW WATER	MEAN LOW WATER	
St. Simons Sound Bar	(31°08'N 081°19'W)	10.0	10.0	10.0	10.0	10.0	10.0	
St. Simons Island Light House	(31°08'N 081°19'W)	7.1	6.6	6.2	6.2	6.2	6.2	
Highway Bridge, South Brunswick River	(31°09'N 081°30'W)	7.5	7.5	7.5	7.5	7.5	7.5	

**WARNING**  
The prudent mariner will not rely solely on any single aid to navigation, particularly on floating aids. See U.S. Coast Guard Light List and U.S. Coast Pilot for details.

**AIDS TO NAVIGATION**  
Consult U.S. Coast Guard Light List for supplemental information concerning aids to navigation.

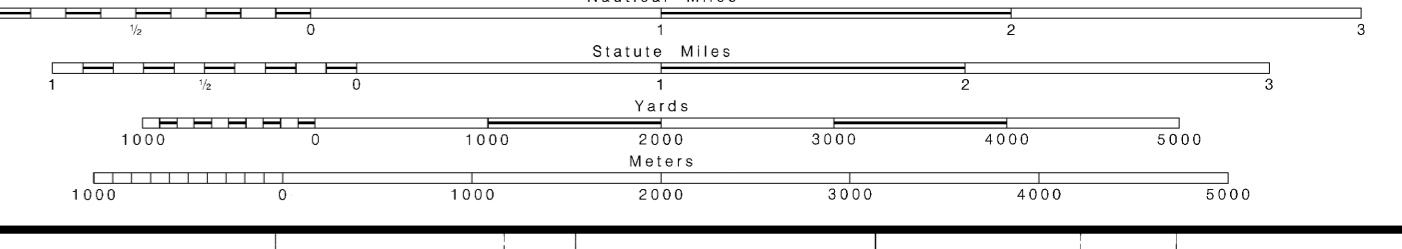
**SUPPLEMENTAL INFORMATION**  
Consult U.S. Coast Pilot 4 for important supplemental information.

**AUTHORITIES**  
Hydrography and topography by the National Ocean Service, Coast Survey, with additional data from the Corps of Engineers and U.S. Coast Guard.

**HORIZONTAL DATUM**  
The horizontal reference datum of this chart is North American Datum of 1983 (NAD 83), which for charting purposes is considered equivalent to the World Geodetic System 1984 (WGS 84). Geographic positions referred to the North American Datum of 1983 must be corrected an average of 0.830' northward and 0.639' eastward to agree with the chart.

**RESTRICTED AREA**  
(50 CFR 224.105; see note D)

**PRECAUTIONARY AREA**  
(see note C)



**PROJECT DEPTHS**  
Channel depths and tabulations, where indicated, reflect the U.S. Army Corps of Engineers (USACE) project depths. The channel may be significantly shallower, particularly at the edges. For detailed channel information and minimum depths as reported by USACE, use NOAA Electronic Navigational Charts (ENCs) surveys and channel condition reports are available at <http://navigation.usace.army.mil/Survey/Reports>.

**RADAR REFLECTORS**  
Radar reflectors have been placed on many floating aids to navigation. Individual radar reflector identification on these aids has been omitted from this chart.

**CAUTION**  
Limitations on the use of radio signals as aids to marine navigation can be found in the U.S. Coast Guard Light Lists and National Geospatial Intelligence Agency Publication 117. Radio direction-finder bearings to commercial broadcasting stations are subject to error and should be used with caution. Station positions are shown thus: (A) Accurate location (B) Approximate location

**NOAA WEATHER RADIO BROADCASTS**  
The NOAA Weather Radio stations listed below provide continuous weather broadcasts. The reception range is typically 20 to 40 miles from the antenna site, but can be as much as 100 nautical miles for stations at high elevations.

**NOTE B**  
Mariners are cautioned that intermittent open water disposal operations may be conducted in the area south of St. Simons Light. Dumping only takes place in depths greater than 50 feet.

**PLANE COORDINATE GRID**  
(based on NAD 1927)  
Georgia State Grid, east zone, is indicated by dashed ticks at 10,000 foot intervals.

**CAUTION**  
Improved channels shown by broken lines are subject to shoaling, particularly at the edges.

**CAUTION**  
Temporary changes or defects in aids to navigation are not indicated on this chart. See Local Notice to Mariners.

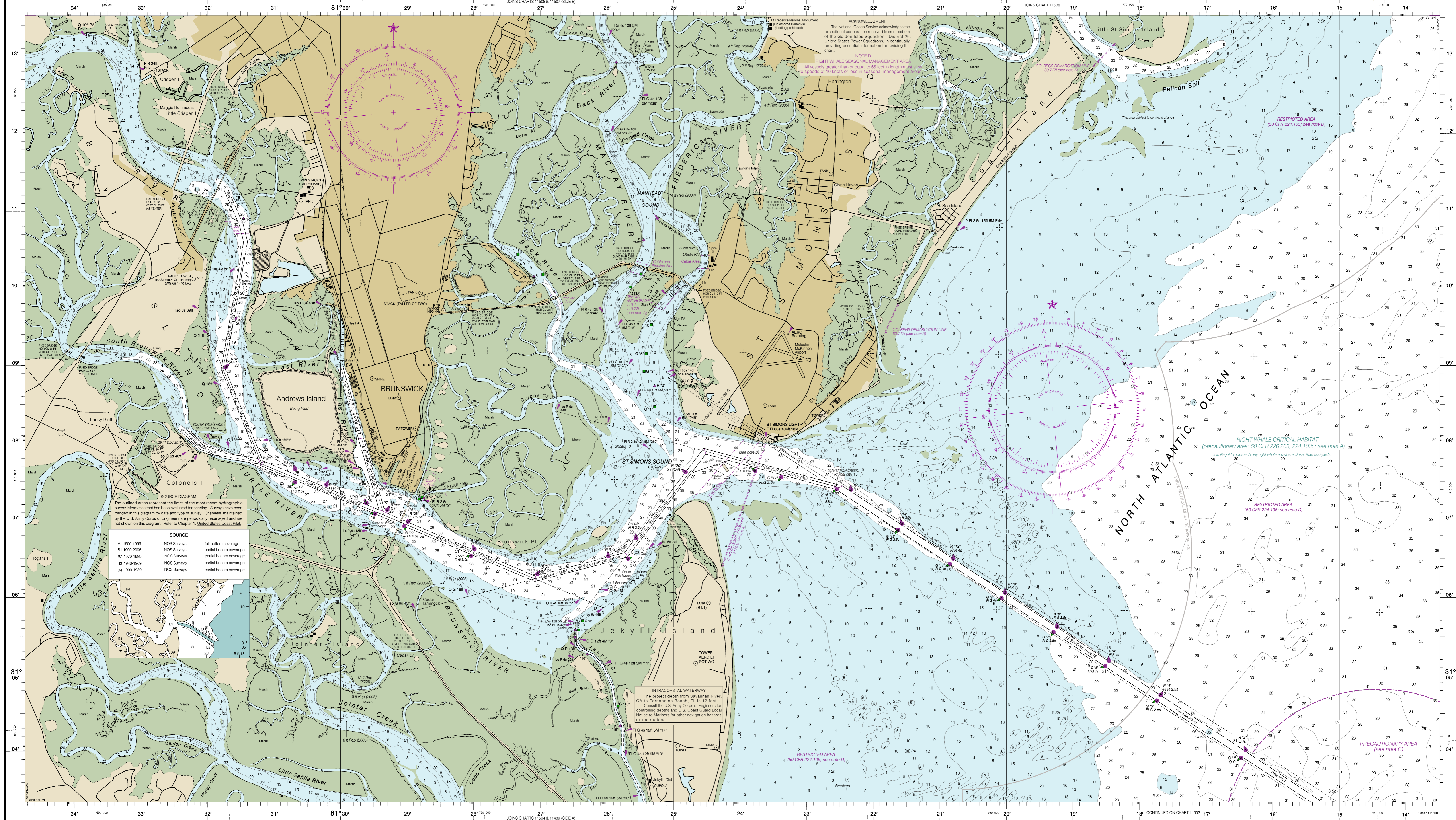
**POLLUTION REPORTS**  
Report all spills of oil and hazardous substances to the National Response Center via 1-800-424-8802 (hot line), or to the nearest U.S. Coast Guard facility if telephone communication is impossible (30 CFR 153).

**HEIGHTS**  
Heights in feet above Mean High Water.

**CAUTION**  
SUBMERGED PIPELINES AND CABLES  
Charged submarine pipelines and submarine cables and submarine pipelines and cables are shown as:

Additional uncharted submarine pipelines and submarine cables may exist within the area of this chart. Not all submarine pipelines and submarine cables are required to be marked, and those that were originally buried may have become exposed. Mariners should use extreme caution when operating vessels in depths of water comparable to their draft in areas where pipelines and cables may exist, and when anchoring, dragging, or trawling. Covered wells may be marked by lighted or unlighted buoys.

## SOUNDINGS IN FEET



## SOUNDINGS IN FEET

Published at Washington, D.C.  
U.S. DEPARTMENT OF COMMERCE  
NATIONAL OCEANIC AND ATMOSPHERIC ADMINISTRATION  
NATIONAL OCEAN SERVICE  
COAST SURVEY

**NOTE C**  
RECOMMENDED WHALE AVOIDANCE PRECAUTIONARY AREA  
The precautionary area shown on this chart is RECOMMENDED for use by all vessels traveling within its limits. The precautionary area has been established to reduce the likelihood of ship strikes of endangered North Atlantic right whales.



St Simons Sound  
SOUNDINGS IN FEET - SCALE 1:40,000

Use NOAA electronic navigational charts for the most up-to-date information.  
LINN 3120 (04/2020), NMC 3320 (01/2020)  
To ensure that this chart was printed at 1:40,000 scale, the line below should measure six inches (152 millimeters).  
The line below measures six inches (152 millimeters).

This chart was distributed as a PDF (Portable Document Format). Printing PDFs may alter the chart scale, color, or legibility that may impact suitability for navigation. Printed charts provided by NOAA certified Print on Demand (POD) providers fulfill a vessel's requirement to carry a navigational chart published by the National Ocean Service in accordance with federal regulations, including but not limited to 33 C.F.R. 164.72(b), and 46 C.F.R. 28.225(a). POD charts meet stringent print standards and can be recognized by an official certification of authenticity printed on the chart. A list of POD providers can be found at [nauticalcharts.noaa.gov/pod](http://nauticalcharts.noaa.gov/pod)