

WAAS CH <b>40338</b> <b>W26A</b>	APP CRS <b>256°</b>	Rwy Idg TDZE Apt Elev	<b>4715</b> <b>8</b> <b>10</b>
--	------------------------	-----------------------------	--------------------------------------

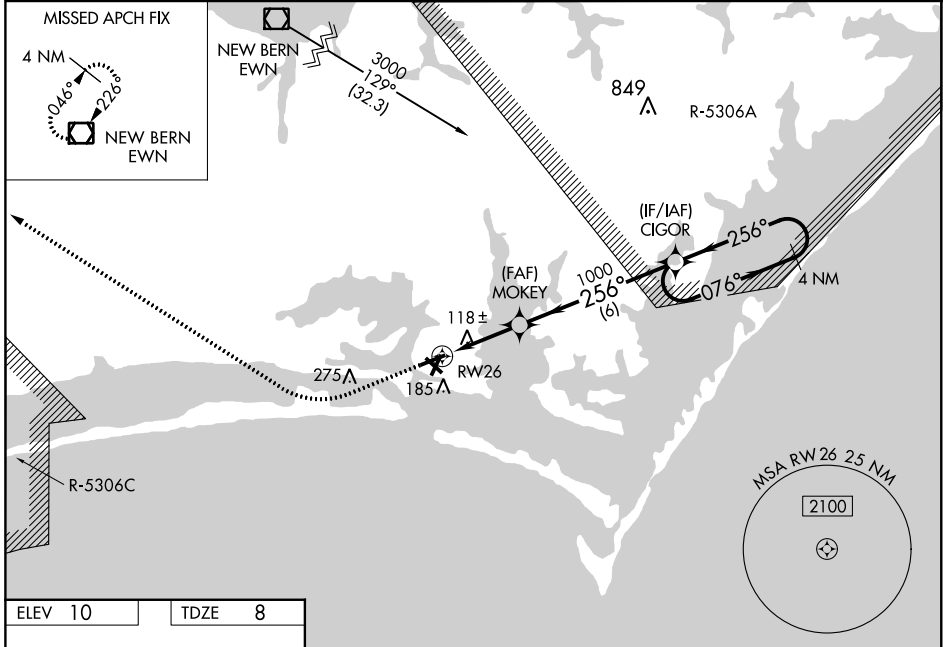
# RNAV (GPS) RWY 26

MICHAEL J SMITH FIELD (MRH)

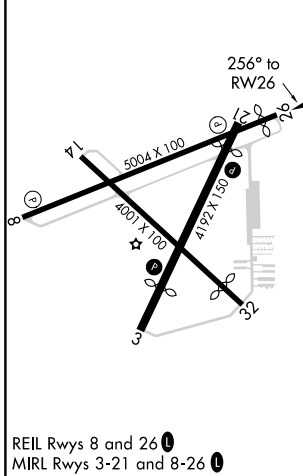
**⚠** Night landing: Rwy 8, 14, 32 NA. Baro-VNAV and VDP NA when using Cherry Point MCAS altimeter setting. DME/DME RNP-0.3 NA. Helicopter visibility reduction below ¼ SM NA. When local altimeter setting not received, use Cherry Point MCAS altimeter setting and increase LPV DA to 301 feet, LNAV/VNAV DA to 431 feet and increase all MDA 40 feet; increase LNAV/VNAV all Cats and LNAV Cats C/D visibility ½ mile and Circling Cat C ¼ mile. ATC clearance required to penetrate R-5306A and R-5306C.

**MISSED APPROACH:**  
Climb to 500 then climbing right turn to 3000 direct EWN VOR/DME and hold.

ASOS <b>135.375</b>	CHERRY POINT APP CON <b>132.575 268.7</b>	CLNC DEL <b>125.65</b>	UNICOM <b>122.8 (CTAF) 0</b>
------------------------	--	---------------------------	---------------------------------



ELEV 10	TDZE 8
---------	--------



500	3000	EWN	4 NM Holding Pattern	
*LNAV only		MOKEY 1000	CIGOR	
*1 NM to RWY 26		1000	1900	
RWY 26		1000	GP 3.00° TCH 43	
-1 NM		2 NM	6 NM	
CATEGORY	A	B	C	D
LPV DA		264-1	256 (300-1)	
LNAV/VNAV DA		394-1¼	386 (400-1¼)	
LNAV MDA		380-1	372 (400-1)	
<b>C</b> CIRCLING	540-1	530 (600-1)	580-1½ 570 (600-1½)	580-2 570 (600-2)

SE-2, 27 JAN 2022 to 24 FEB 2022

SE-2, 27 JAN 2022 to 24 FEB 2022