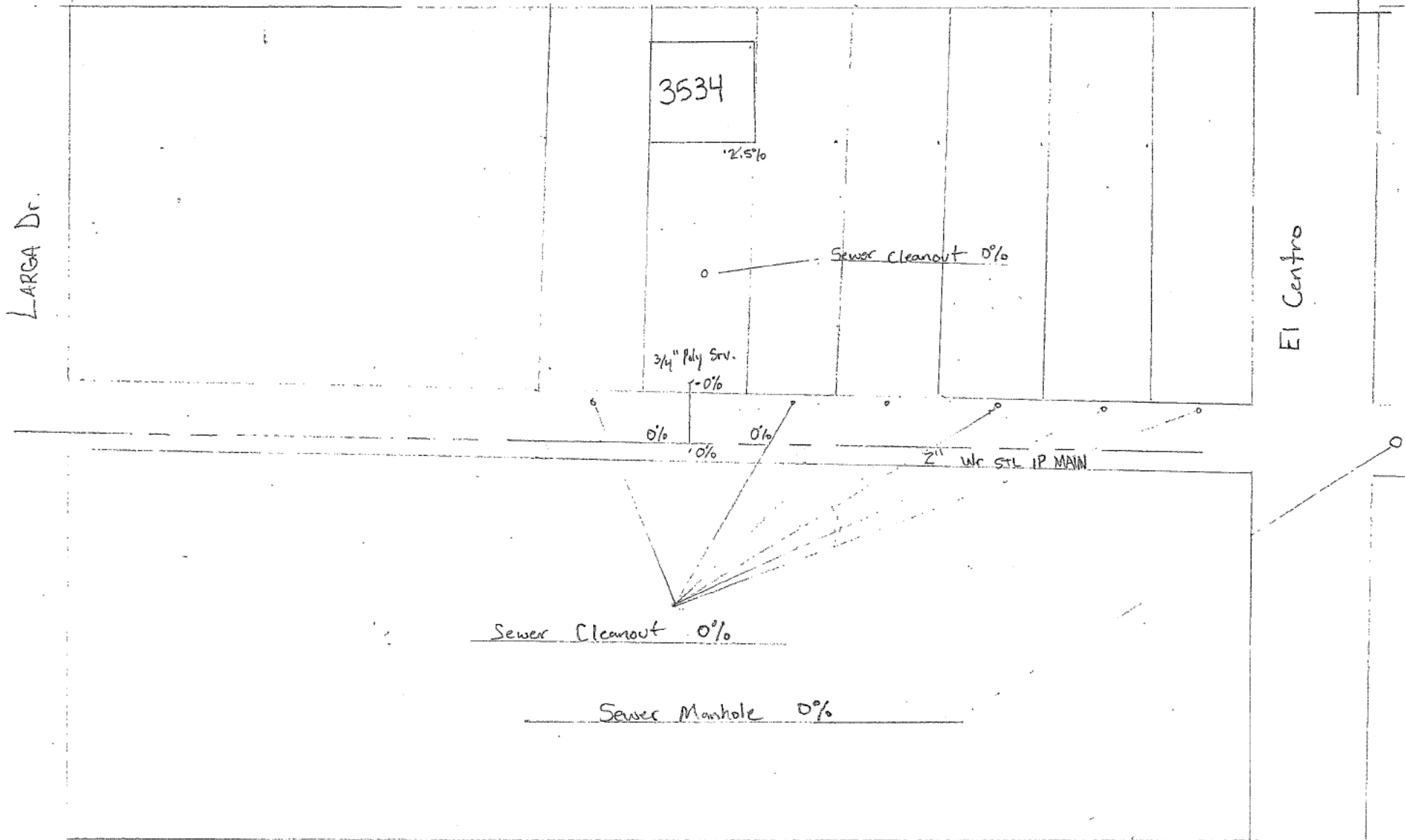


Espanola Dr.

N



CORTEZ Dr.

Mapsc0 23

Mapsheet 2374

At 11:30am - 2-23-2018

Sr. Service Techs A&B

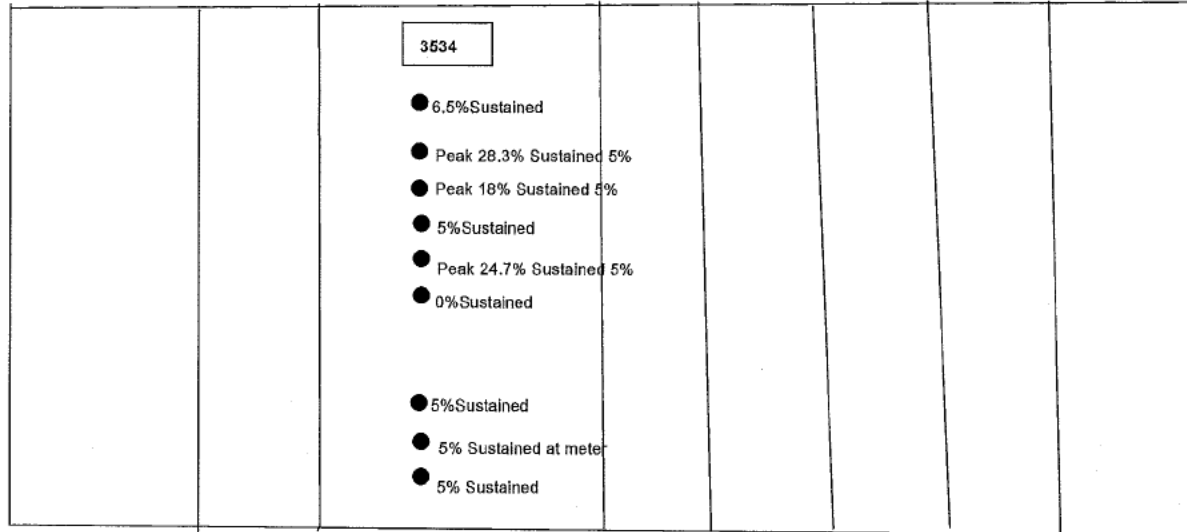
2/23/2018 At Approx 3:30PM

CGI# 34947

Calibration Date- 2/22/2018

All readings are in percent gas(not LEL)

ESPANOLA DR

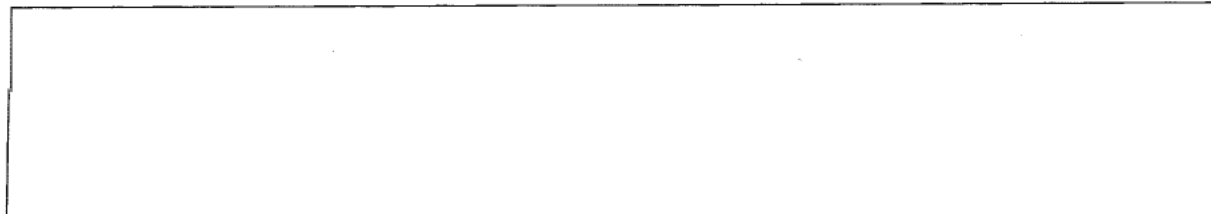


LARGA

Alley

EL CENTRO

2" WR STL IP MAIN



DURANGO

Sr. Service Techs A&B

2/23/2018 At Approx 5:30PM

CGI# 48511

Calibration Date- 1/29/2018

All readings are in percent gas(not LEL)

ESPANOLA DR

3534

- Peak 5.9% Sustained 2.4%
- Peak 6.5% Sustained 0.1%
- Peak 80.7% Sustained 43.2% at 45 seconds
- Sustained 0%
- Peak 4.6% Sustained 2.2%
- Peak 0.4% Sustained 0%
- Peak 0.4% Sustained 0.1%
- Peak 2.4% Sustained 1.2%
- Peak 0.4% Sustained 0%
- Peak 2.7% Sustained 0.5% at meter
- 0% Sustained

Fence ● 0%

LARGA

Service

Alley

EL CENTRO

2" WR STL IP MAIN

● 4.3% Peak 0.6% Sustained

● 0.5% Sustained

DURANGO

AEC-NTSB-000275