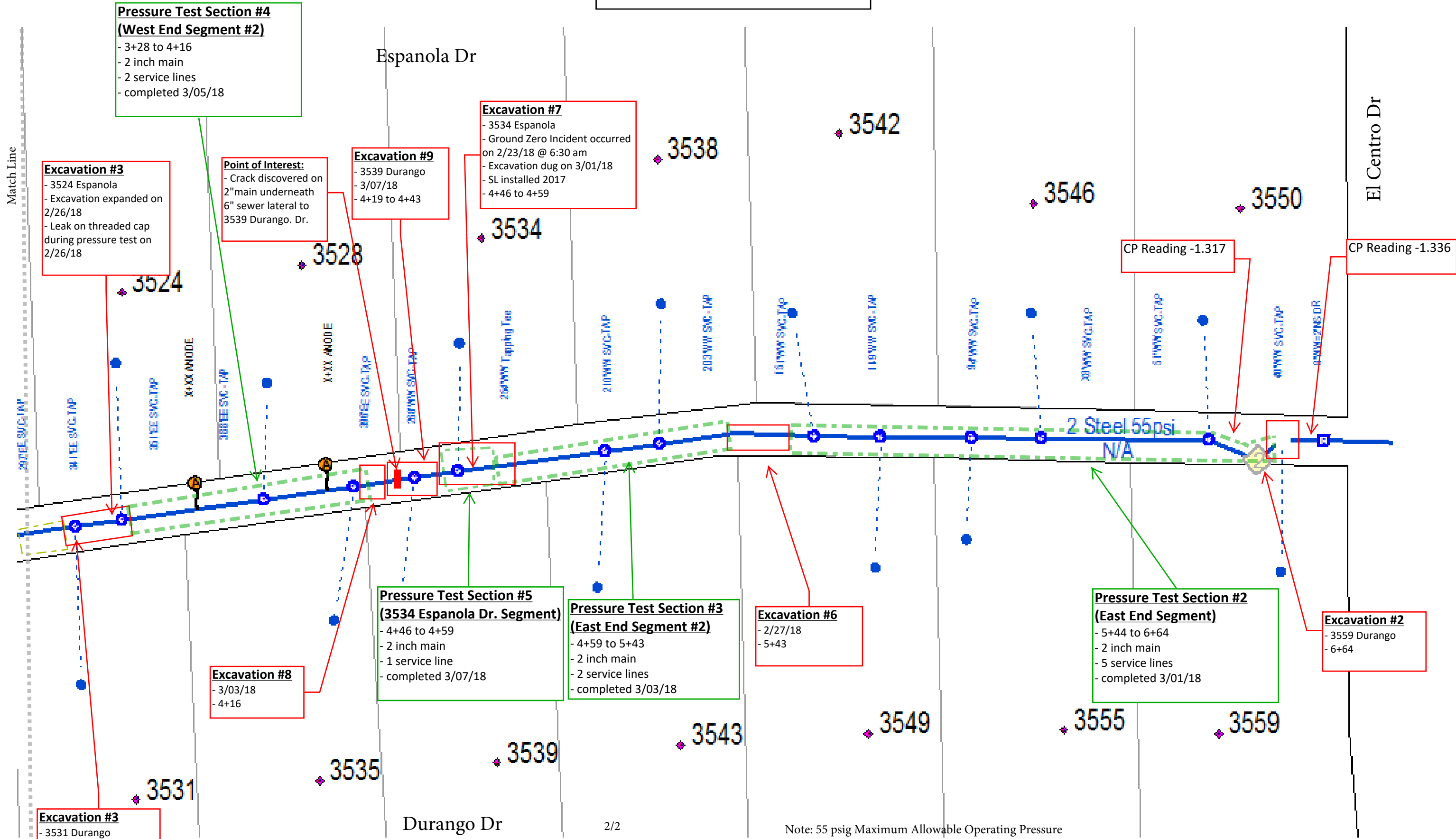


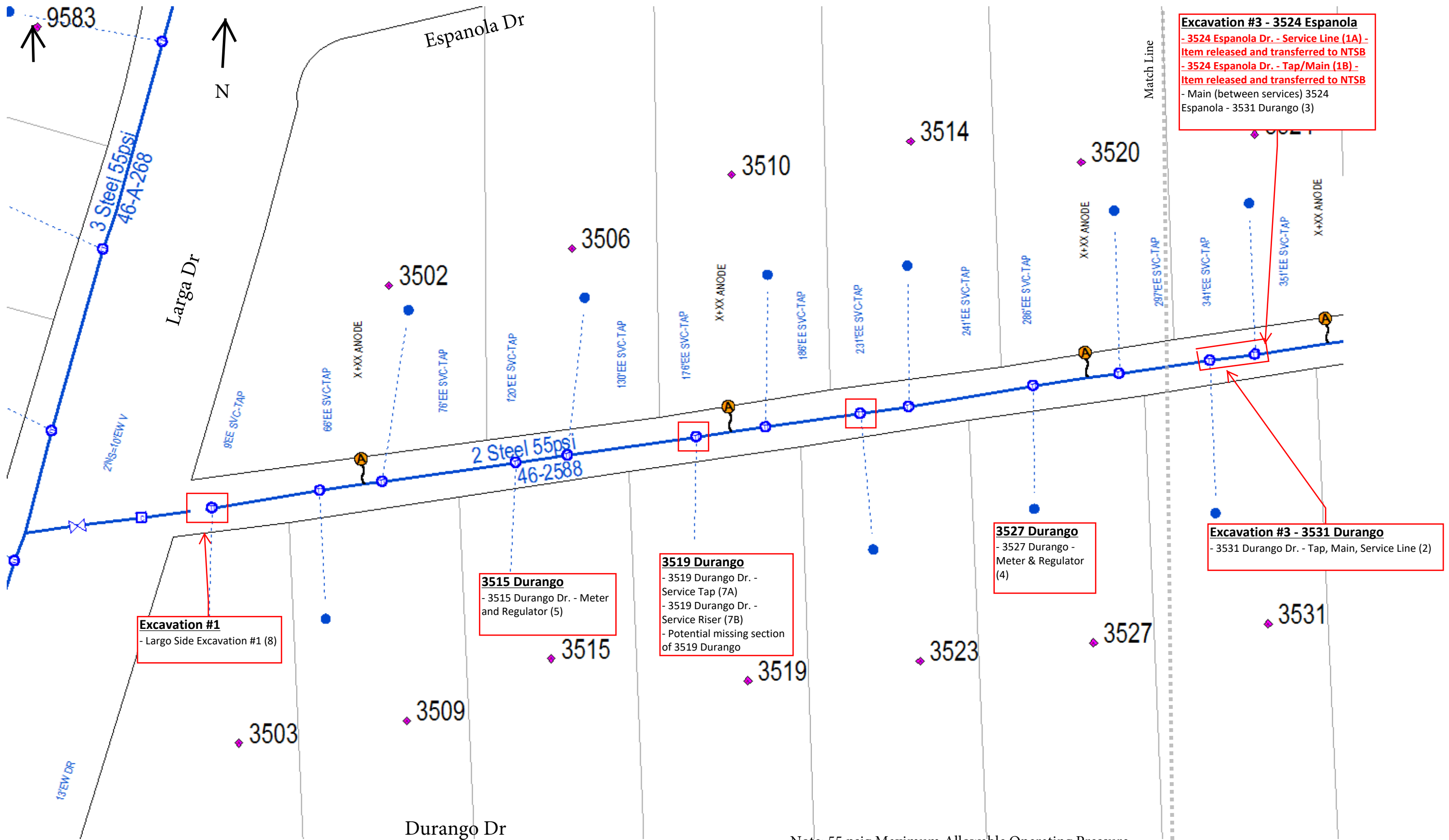
Excavation Site Map



Note: 55 psig Maximum Allowable Operating Pressure

Revision Date: 3/12/18 4:00 PM

Excavation Site Material Inventory Map



Excavation #3 - 3524 Espanola
 - 3524 Espanola Dr. - Service Line (1A) -
 Item released and transferred to NTSB
 - 3524 Espanola Dr. - Tap/Main (1B) -
 Item released and transferred to NTSB
 - Main (between services) 3524
 Espanola - 3531 Durango (3)

Excavation #1
 - Largo Side Excavation #1 (8)

3515 Durango
 - 3515 Durango Dr. - Meter
 and Regulator (5)

3519 Durango
 - 3519 Durango Dr. -
 Service Tap (7A)
 - 3519 Durango Dr. -
 Service Riser (7B)
 - Potential missing section
 of 3519 Durango

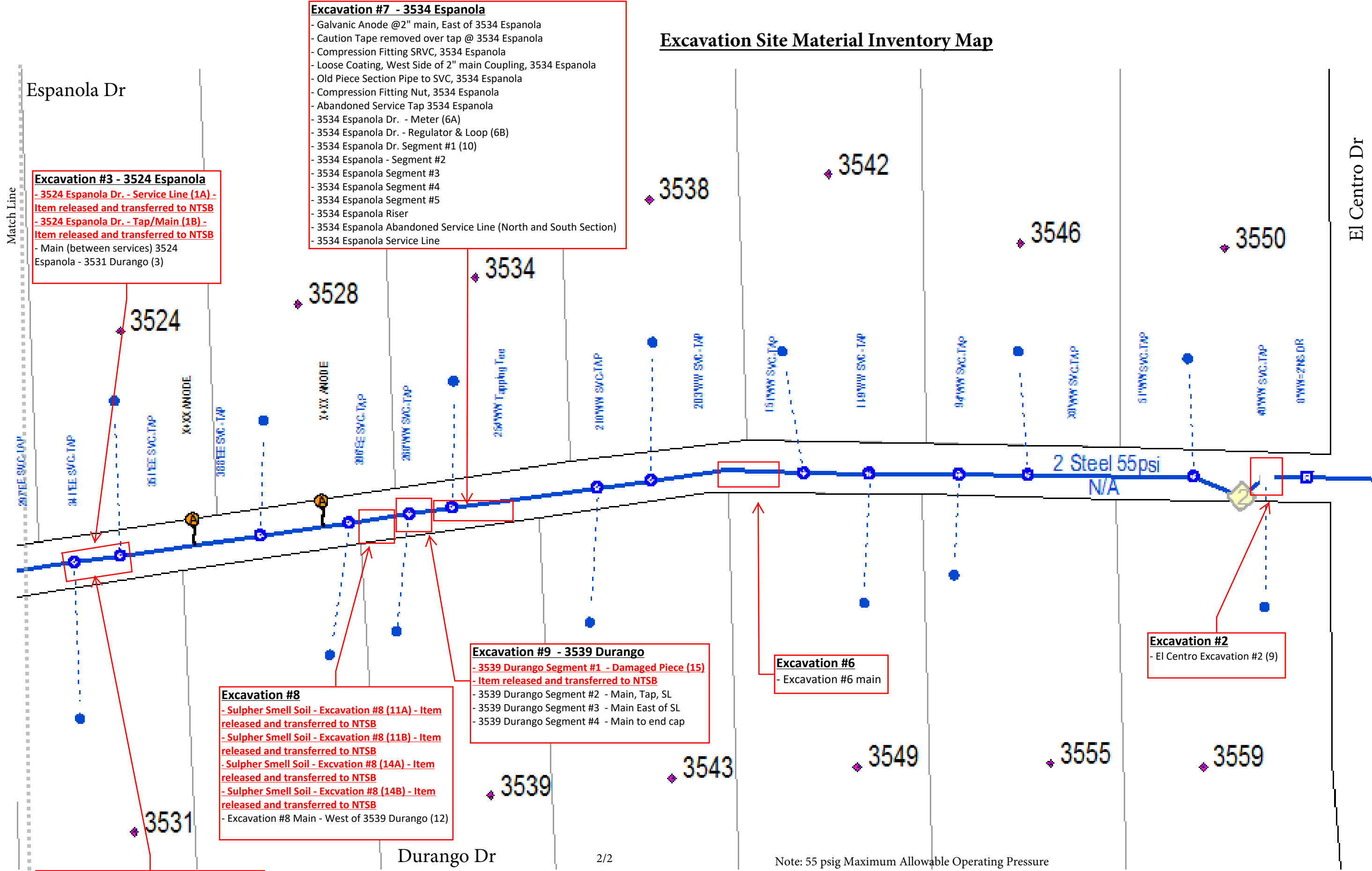
3527 Durango
 - 3527 Durango -
 Meter & Regulator
 (4)

Excavation #3 - 3531 Durango
 - 3531 Durango Dr. - Tap, Main, Service Line (2)

Note: 55 psig Maximum Allowable Operating Pressure

Revision Date: 3/09/2018 6:15 PM

Excavation Site Material Inventory Map



Excavation #7 - 3534 Espanola
 - Galvanic Anode @2" main, East of 3534 Espanola
 - Caution Tape removed over tap @ 3534 Espanola
 - Compression Fitting SRVC, 3534 Espanola
 - Loose Coating, West Side of 2" main Coupling, 3534 Espanola
 - Old Piece Section Pipe to SVC, 3534 Espanola
 - Compression Fitting Nut, 3534 Espanola
 - Abandoned Service Tap 3534 Espanola
 - 3534 Espanola Dr. - Meter (6A)
 - 3534 Espanola Dr. - Regulator & Loop (6B)
 - 3534 Espanola Dr. Segment #1 (10)
 - 3534 Espanola - Segment #2
 - 3534 Espanola Segment #3
 - 3534 Espanola Segment #4
 - 3534 Espanola Segment #5
 - 3534 Espanola Riser
 - 3534 Espanola Abandoned Service Line (North and South Section)
 - 3534 Espanola Service Line

Excavation #3 - 3524 Espanola
 - 3524 Espanola Dr. - Service Line (1A) - Item released and transferred to NTSB
 - 3524 Espanola Dr. - Tap/Main (1B) - Item released and transferred to NTSB
 - Main (between services) 3524 Espanola - 3531 Durango (3)

Excavation #8
 - Sulpher Smell Soil - Excavation #8 (11A) - Item released and transferred to NTSB
 - Sulpher Smell Soil - Excavation #8 (11B) - Item released and transferred to NTSB
 - Sulpher Smell Soil - Excavation #8 (14A) - Item released and transferred to NTSB
 - Sulpher Smell Soil - Excavation #8 (14B) - Item released and transferred to NTSB
 - Excavation #8 Main - West of 3539 Durango (12)

Excavation #9 - 3539 Durango
 - 3539 Durango Segment #1 - Damaged Piece (15) - Item released and transferred to NTSB
 - 3539 Durango Segment #2 - Main, Tap, SL
 - 3539 Durango Segment #3 - Main East of SL
 - 3539 Durango Segment #4 - Main to end cap

Excavation #6
 - Excavation #6 main

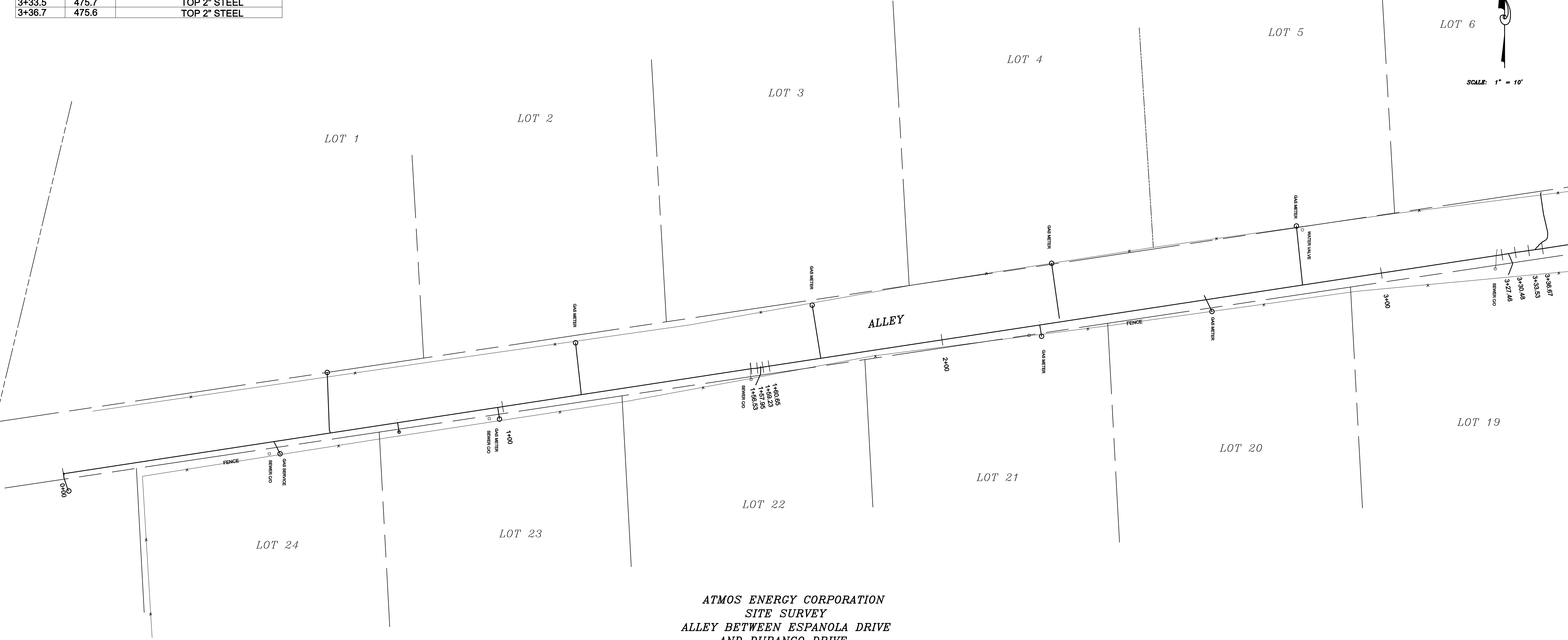
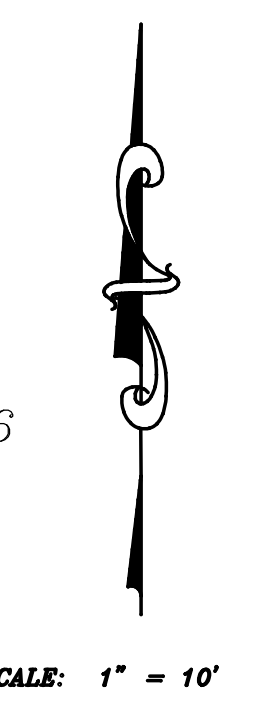
Excavation #2
 - El Centro Excavation #2 (9)

Excavation #3 - 3531 Durango
 - 3531 Durango Dr. - Tap, Main, Service Line (2)

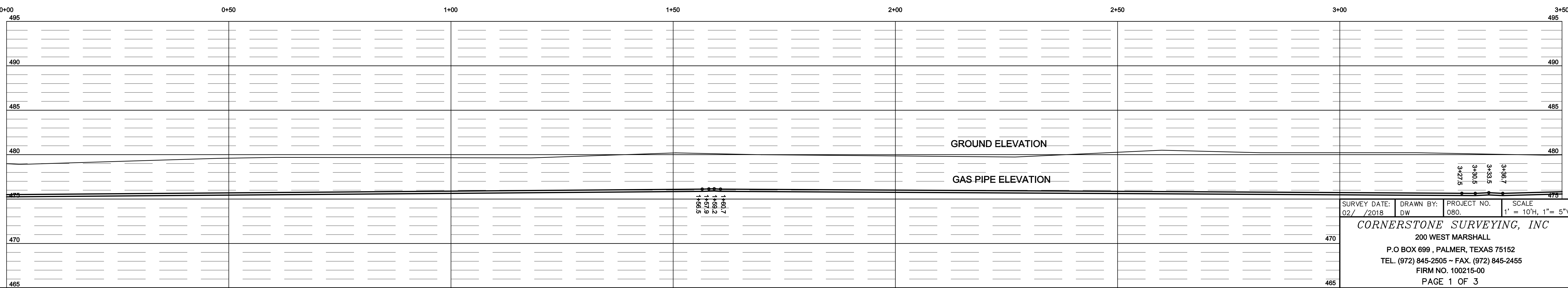
Note: 55 psig Maximum Allowable Operating Pressure

Revision Date: 3/09/18 6:15 PM

STATION	ELEV.	DESCRIPTION
1+56.5	476.1	TOP 2" STEEL
1+57.9	476.1	TOP 2" STEEL
1+59.2	476.1	TOP 2" STEEL
1+60.7	476.1	TOP 2" STEEL
3+27.5	475.7	TOP 2" STEEL
3+30.5	475.6	TOP 2" STEEL
3+33.5	475.7	TOP 2" STEEL
3+36.7	475.6	TOP 2" STEEL

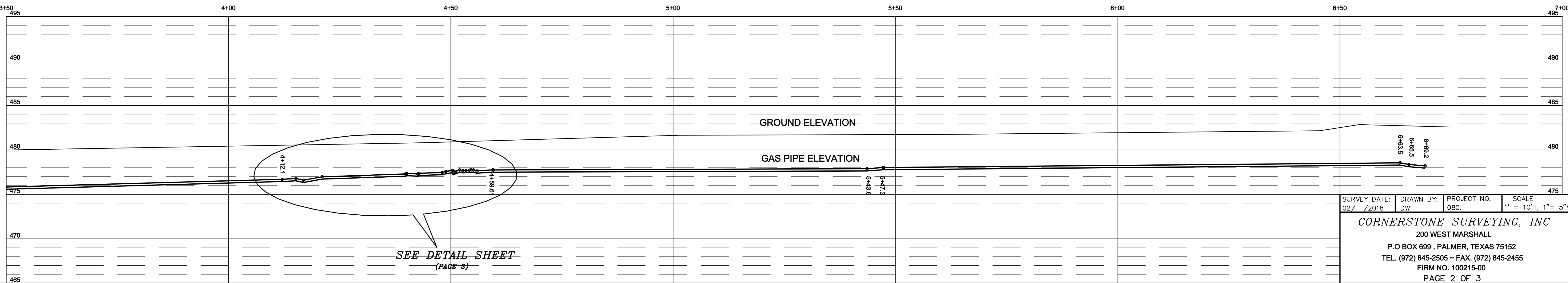
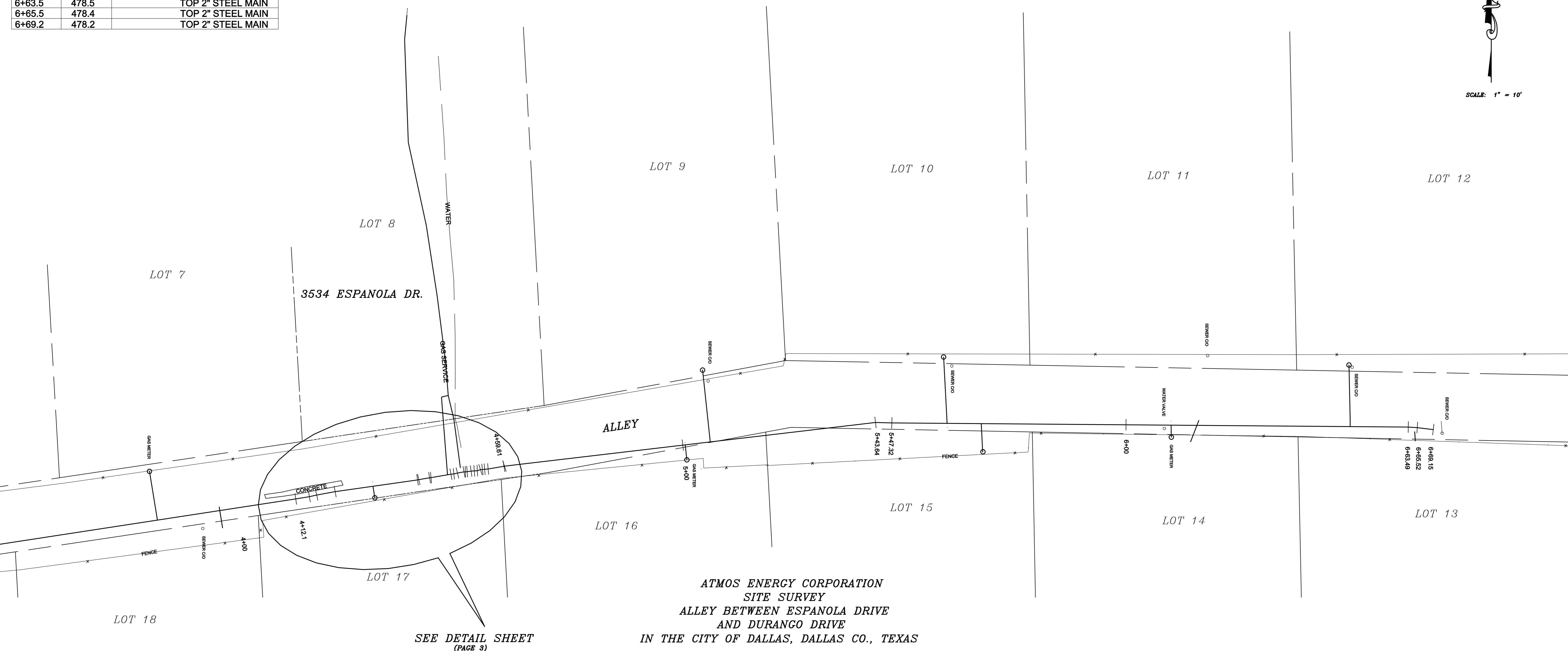
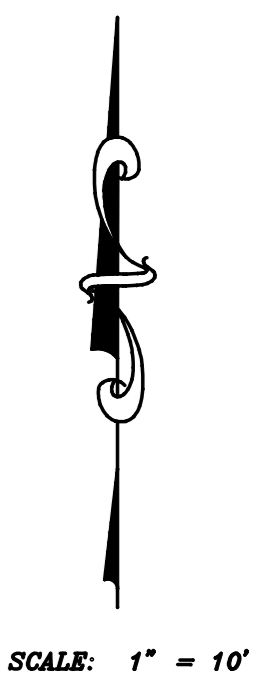


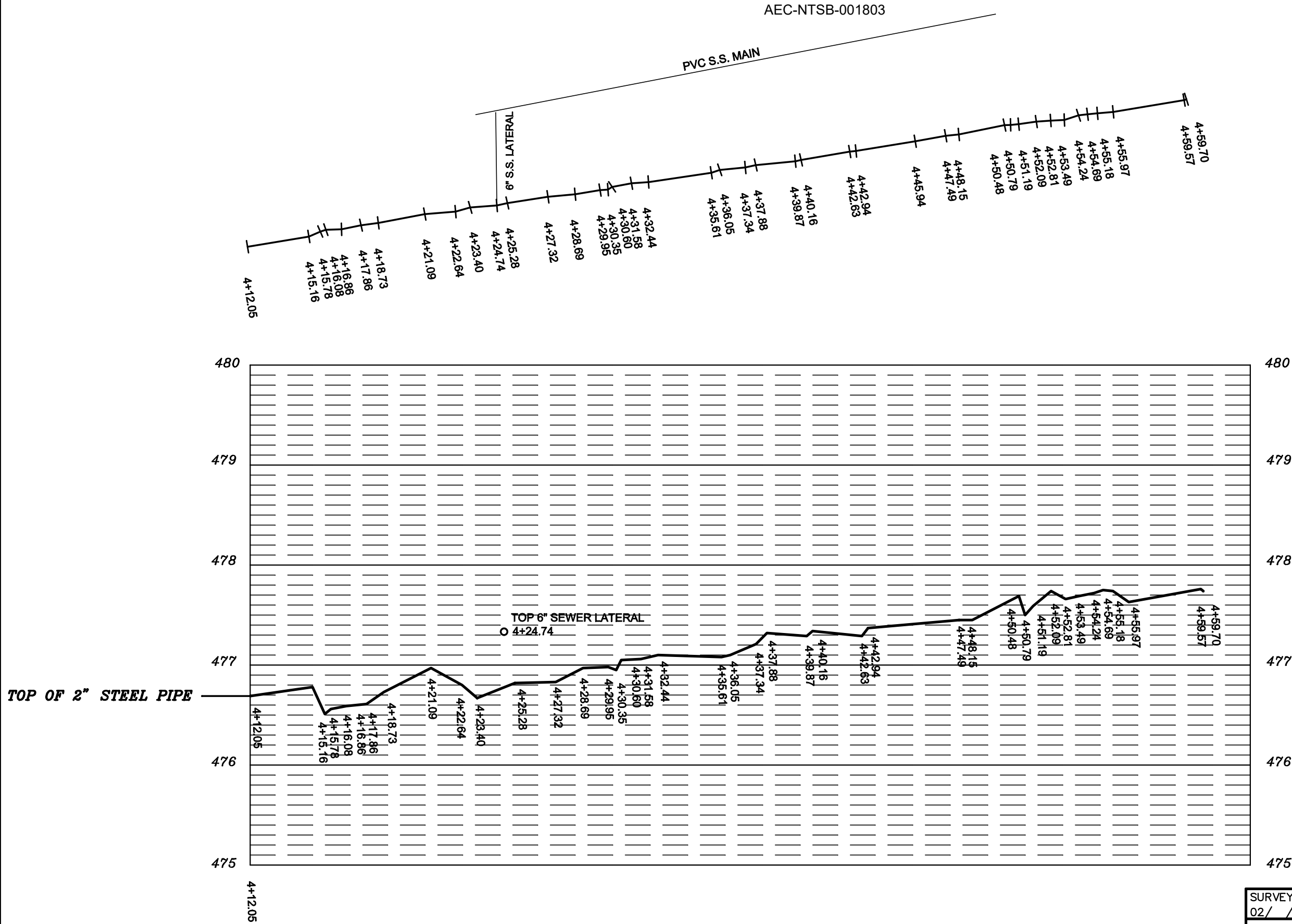
ATMOS ENERGY CORPORATION
 SITE SURVEY
 ALLEY BETWEEN ESPANOLA DRIVE
 AND DURANGO DRIVE
 IN THE CITY OF DALLAS, DALLAS CO., TEXAS



SURVEY DATE: 02 / / 2018	DRAWN BY: DW	PROJECT NO. 080.	SCALE 1" = 10'H, 1" = 5"V
CORNERSTONE SURVEYING, INC 200 WEST MARSHALL P.O. BOX 699, PALMER, TEXAS 75152 TEL. (972) 845-2505 ~ FAX. (972) 845-2455 FIRM NO. 100215-00 PAGE 1 OF 3			

STATION	ELEV.	DESCRIPTION
4+12.1	476.7	TOP 2" STEEL
4+15.2	476.8	TOP 2" STEEL
4+16.8	476.6	TOP 2" STEEL
4+21.1	477.0	TOP 2" STEEL
5+43.6	477.9	TOP 2" STEEL CAP
5+47.3	478.0	TOP 2" STEEL CAP
6+63.5	478.5	TOP 2" STEEL MAIN
6+65.5	478.4	TOP 2" STEEL MAIN
6+69.2	478.2	TOP 2" STEEL MAIN





2" MAIN ELEVATIONS		
STATION	ELEV.	DESCRIPTION
4+12.1	476.7	TOP 2" STEEL
4+15.2	476.8	TOP 2" STEEL
4+15.8	476.5	W1
4+16.1	476.6	W1 TOP
4+16.9	476.6	TOP 2" STEEL
4+17.9	476.6	E1 TOP
4+18.7	476.7	E1
4+21.1	477.0	TOP 2" STEEL
4+22.6	476.8	W1 TRUE TOP
4+23.4	476.7	TOP 2" WEST OF LE
4+25.3	476.8	TOP 2" EAST OF LE
4+27.3	476.8	E1 TRUE TOP
4+28.7	477.0	E1 CUT
4+30.0	477.0	WEST 2" STEEL AT TAP
4+30.4	477.0	EAST 2" STEEL AT TAP
4+30.6	477.1	TOP 2" STEEL
4+31.6	477.1	E2 TOP
4+32.4	477.1	TOP 2" STEEL
4+35.6	477.1	TOP 2" STEEL AT TAP
4+36.1	477.1	TOP 2" STEEL AT TAP
4+37.3	477.2	W4 CUT
4+37.9	477.3	W4 TOP
4+39.9	477.3	W2
4+40.2	477.3	W2 TOP
4+42.6	477.3	E2 TOP
4+42.9	477.4	E2
4+47.5	477.5	TOP 2" STEEL
4+48.2	477.5	TOP 2" STEEL
4+50.5	477.6	TOP 2" STEEL
4+50.8	477.7	TOP 2" STEEL
4+51.2	477.7	TOP 2" STEEL
4+52.1	477.7	TOP 2" STEEL
4+52.8	477.7	TOP 2" STEEL COUPLING
4+53.5	477.8	TOP 2" STEEL
4+54.2	477.7	TOP 2" STEEL
4+56.0	477.6	3534 W1
4+59.6	477.7	3534 E1
4+59.7	477.7	E. 2" CAP STEEL

SEWER LATERAL CROSSING ELEVATIONS		
STATION	ELEV.	DESCRIPTION
4+24.7	477.4	TOP 6" S.S. AT 2" STEEL

TOP OF 2" STEEL PIPE

DETAIL SHEET OF
STATION 4+12.05 - 4+59.70
ALLEY SOUTH OF 3534 ESPANOLA DRIVE
IN THE CITY OF DALLAS, DALLAS COUNTY, TEXAS

SURVEY DATE: 02/ /2018	DRAWN BY: DW	PROJECT NO. 080.	SCALE 1" = 5'H, 1" = 1"V
---------------------------	-----------------	---------------------	-----------------------------

CORNERSTONE SURVEYING, INC
 200 WEST MARSHALL
 P.O BOX 699 , PALMER, TEXAS 75152
 TEL. (972) 845-2505 ~ FAX. (972) 845-2455
 FIRM NO. 100215-00
 PAGE 3 OF 3