

[WPR22FA215]

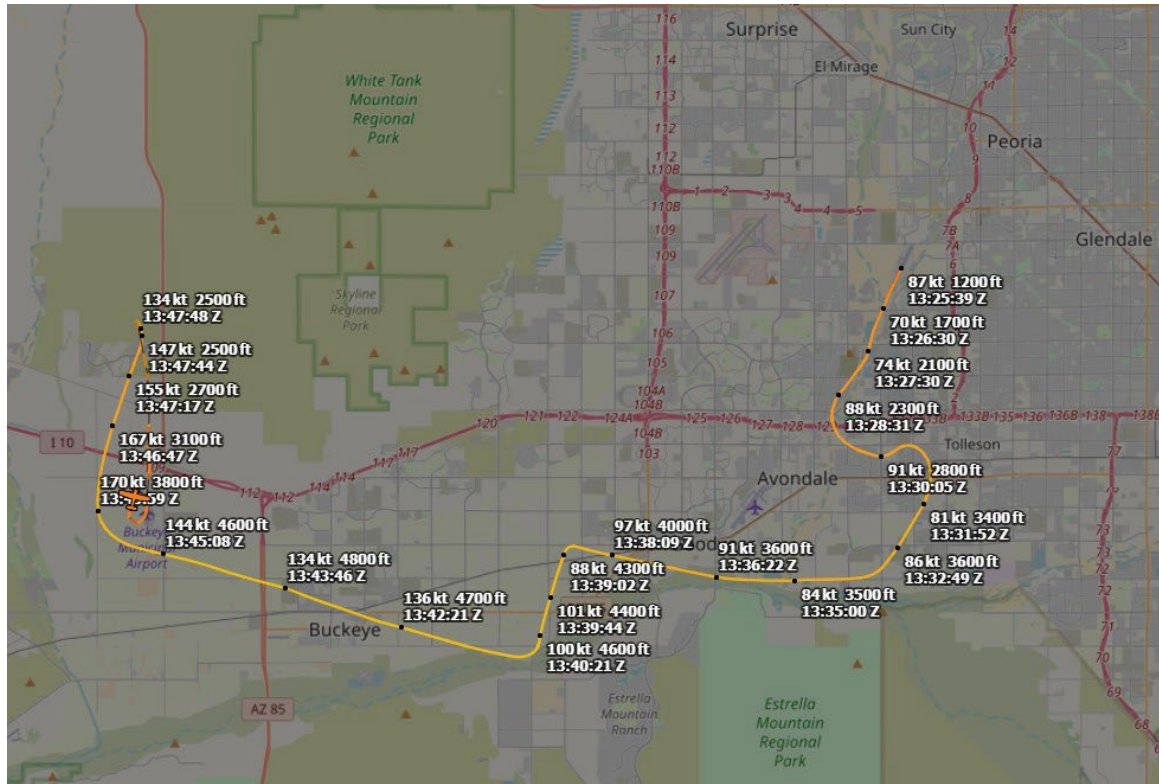
**FLIGHT PATH IMAGES**

## **Image Sources**

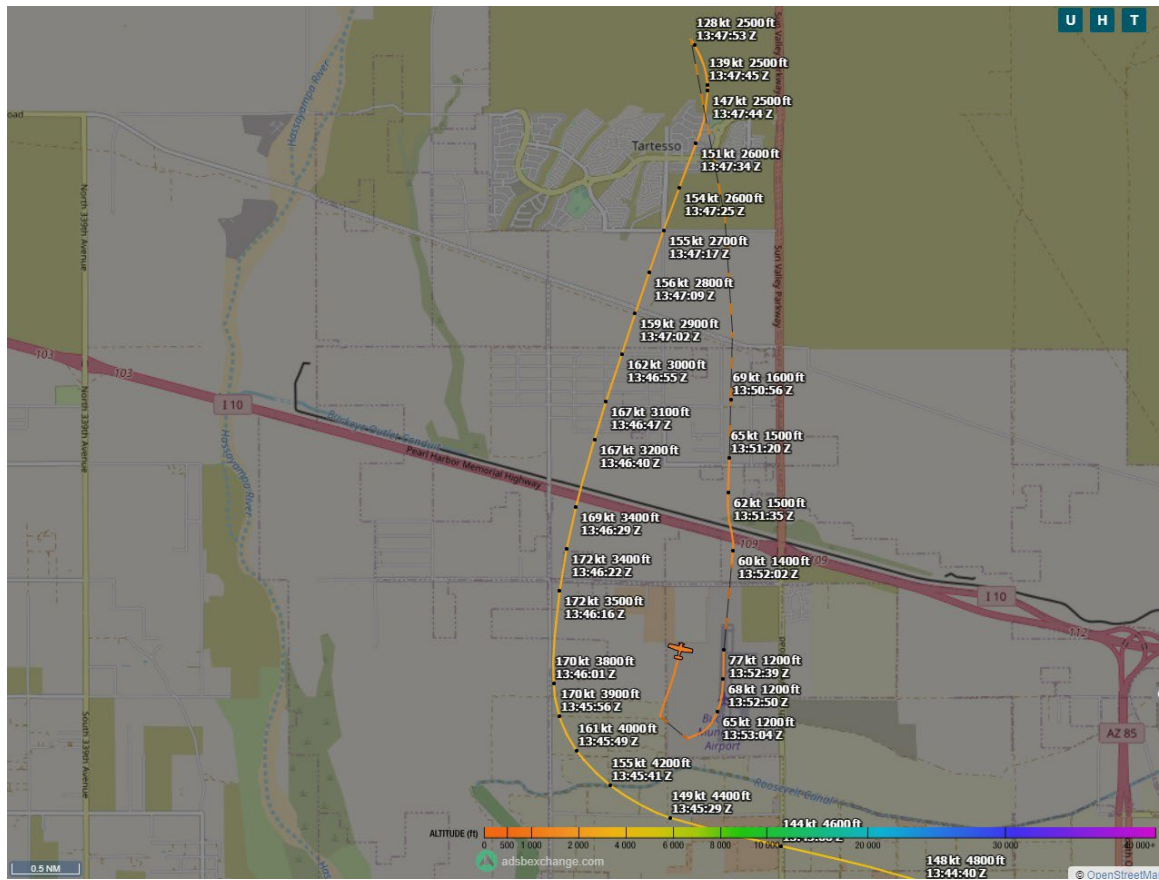
Images 1-3 were obtained from ADSBExchange.com. The raw data used to generate the images was not obtained during the investigation.

Image 4 was obtained directly from Buckeye Municipal Airport (BKX) personnel. The airport (BKX) was equipped with a VirTower traffic monitoring system, which was used to generate the flight path image. The raw data used to generate the images was not obtained during the investigation.

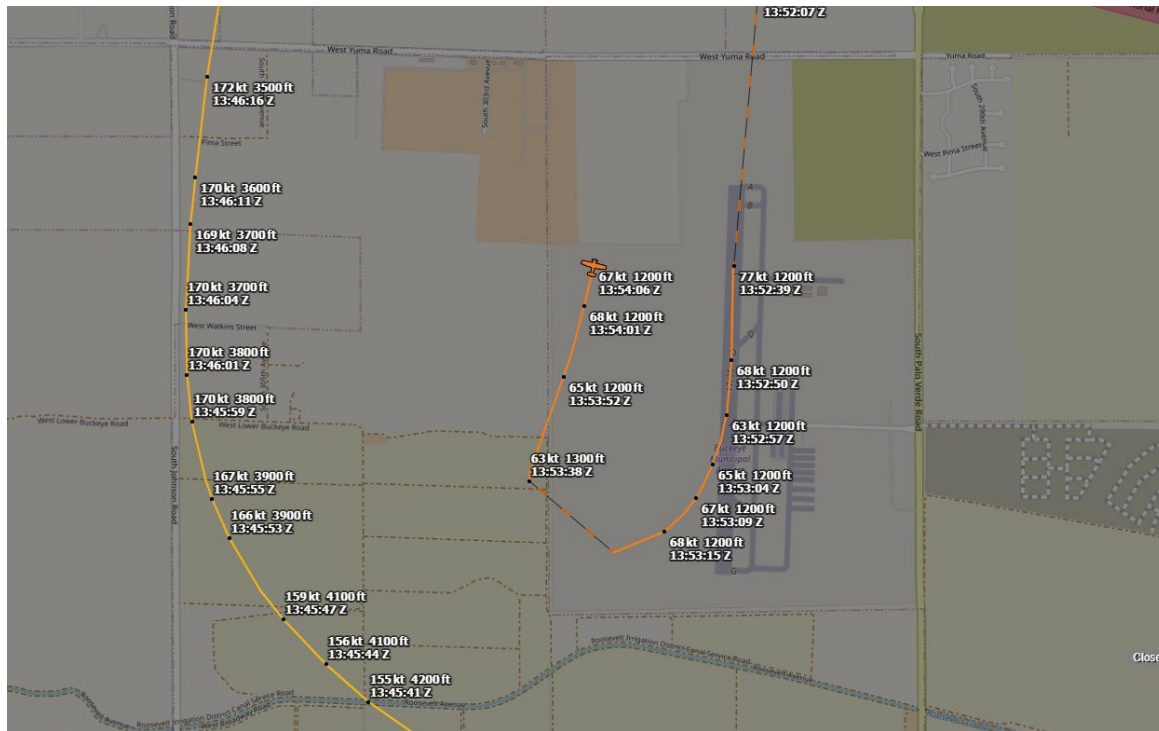
Image 5 was generated using the "Export KML" and "baro + avg. (EGM96 - baro)" functions within ADSBxchange.com for the accident flight, which allows viewing of the flight path using GoogleEarth.



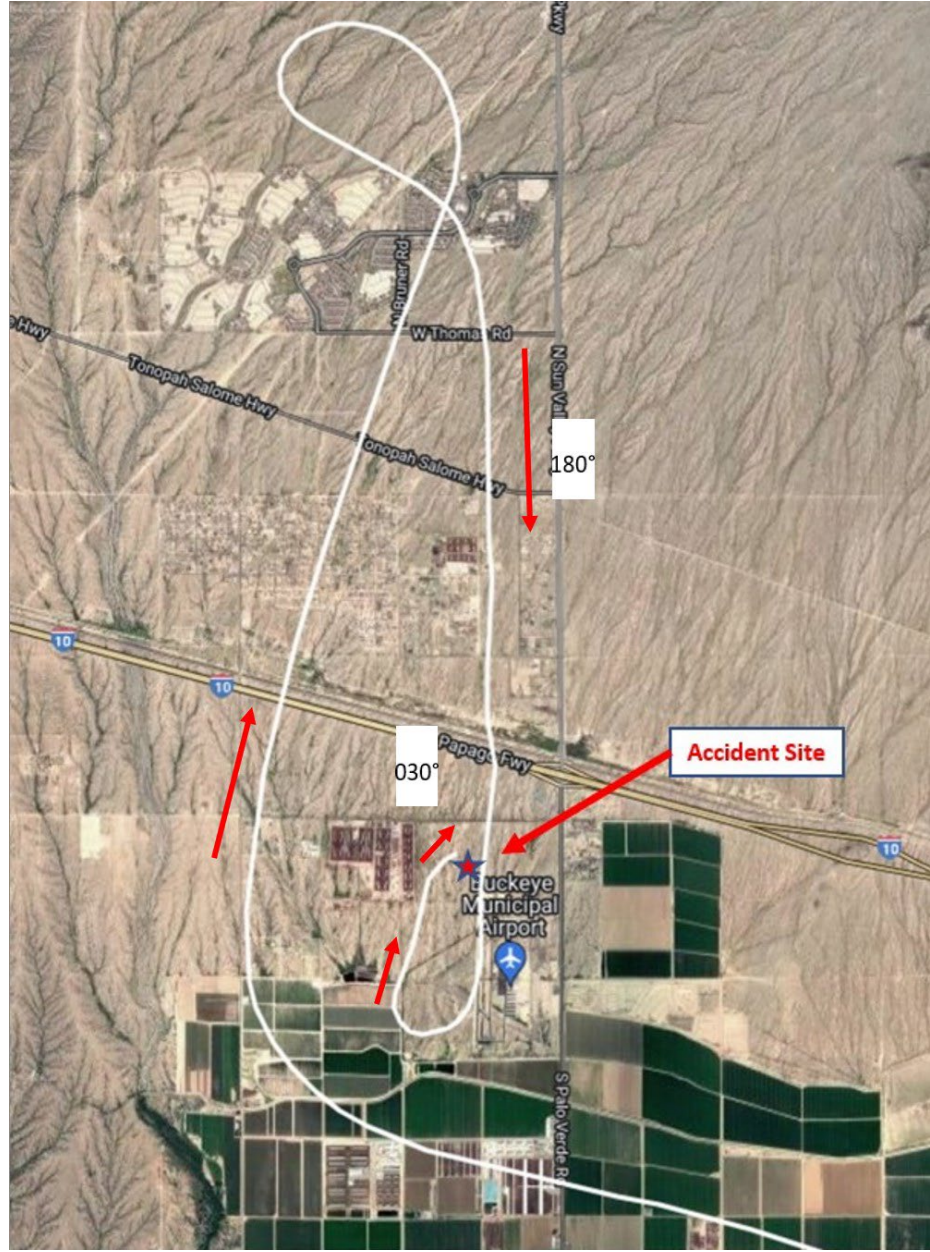
**Image 1 - Accident Flight Overview from ADS-B**



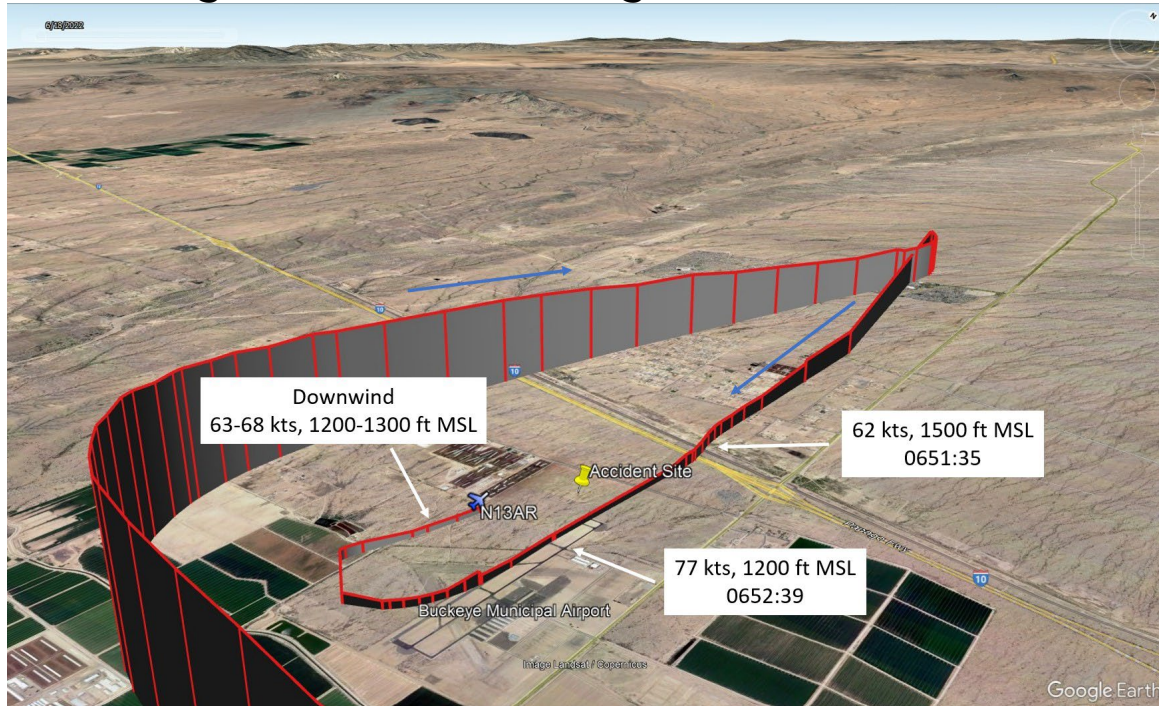
**Image 2 -Traffic Pattern Flight Path from ADS-B**



**Image 3 - Detailed Traffic Pattern Flight Path from ADS-B**



**Image 4 - Traffic Pattern Flight Path from VirTower**



**Image 5 - Traffic Pattern Flight Path on GoogleEarth**