

LOC/DME I-TXH 110.7 Chan 44	APP CRS 350°	Rwy Idg TDZE Apt Elev	6016 78 82
---	------------------------	-----------------------------	---------------------------------------

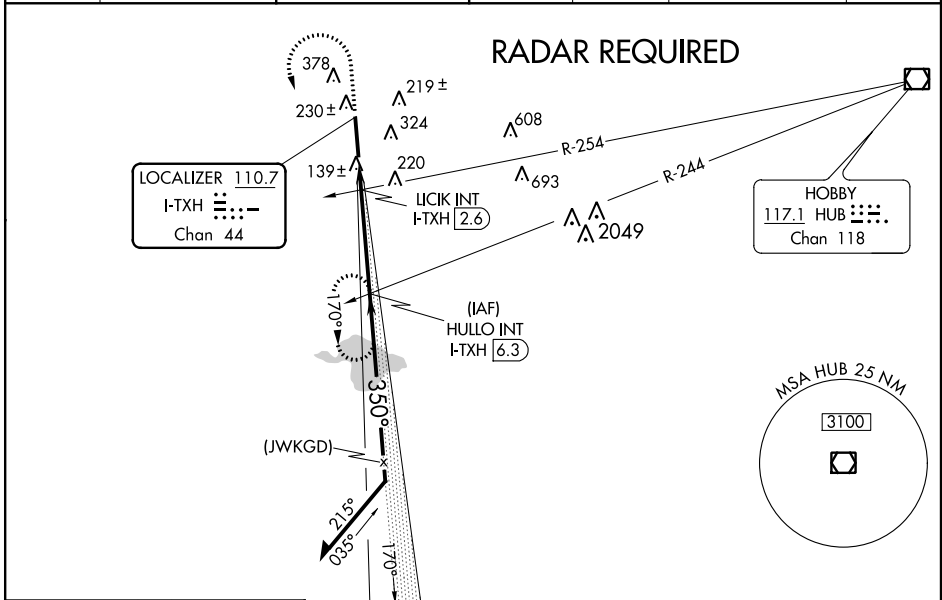
ILS or LOC RWY 35

SUGAR LAND RGNL (SGR)

⚠ When VGSi inop, Circling Rwy 17 NA at night. When local altimeter setting not received, use William P Hobby altimeter setting: increase DA 51 feet; increase all MDA 60 feet and increase S-LOC 35 visibility Cats C/D to 1½, Circling Cat C to 2, Cat D to 2½, and UICK Fix Minimums S-LOC 35 visibility Cats C/D to 1½, Circling Cat C to 2, Cat D to 2½. VDP NA when using William P Hobby altimeter setting.

MISSED APPROACH: Climb to 900 then climbing left turn to 2000 on I-TXH south course to HULLO INT/I-TXH 6.3 DME and hold.

ASOS 118.125	HOUSTON APP CON 123.8 257.7	SUGAR LAND TOWER * 118.65 (CTAF) 0	GND CON 121.4	CLNC DEL 121.4	HOUSTON CLNC DEL 119.25 (When tower closed)	UNICOM 122.95
------------------------	---------------------------------------	--	-------------------------	--------------------------	--	-------------------------



SC-5, 21 JUL 2016 to 18 AUG 2016

SC-5, 21 JUL 2016 to 18 AUG 2016

ELEV 82	TDZE 78	900	2000	↑ 600 when using William P Hobby altimeter setting.																																															
		I-TXH S crs	HULLO INT	6000 HULLO INT I-TXH 6.3																																															
<p>* LOC only.</p> <p>I-TXH 1.1</p> <p>+ I-TXH 1.9</p> <p>UICK INT I-TXH 2.6</p> <p>1800</p> <p>170°</p> <p>350°</p> <p>2000</p> <p>1800</p> <p>GS 3.00° TCH 56</p>				Remain within 10 NM																																															
<p>REIL Rwy 17 and 35</p> <p>HIRL Rwy 17-35</p> <p>FAF to MAP 5.2 NM</p>		0.9	0.7	3.7 NM																																															
<table border="1"> <tr> <th>Knots</th> <td>60</td> <td>90</td> <td>120</td> <td>150</td> <td>180</td> </tr> <tr> <th>Min:Sec</th> <td>5:12</td> <td>3:28</td> <td>2:36</td> <td>2:05</td> <td>1:44</td> </tr> </table>		Knots	60	90	120	150	180	Min:Sec	5:12	3:28	2:36	2:05	1:44	<table border="1"> <thead> <tr> <th>CATEGORY</th> <th>A</th> <th>B</th> <th>C</th> <th>D</th> </tr> </thead> <tbody> <tr> <td>S-ILS 35</td> <td colspan="4">278-¾ 200 (200-¾)</td> </tr> <tr> <td>S-LOC 35</td> <td>540-1</td> <td>462 (500-1)</td> <td>540-1¾</td> <td>462 (500-1¾)</td> </tr> <tr> <td>CIRCLING</td> <td>720-1</td> <td>638 (700-1)</td> <td>720-1¾ 638 (700-1¾)</td> <td>720-2 638 (700-2)</td> </tr> <tr> <td colspan="5" style="text-align:center">UICK FIX MINIMUMS (DUAL VOR RECEIVERS OR DME REQUIRED)</td> </tr> <tr> <td>S-LOC 35</td> <td colspan="4">400-1 322 (400-1)</td> </tr> <tr> <td>CIRCLING</td> <td>720-1</td> <td>638 (700-1)</td> <td>720-1¾ 638 (700-1¾)</td> <td>720-2 638 (700-2)</td> </tr> </tbody> </table>			CATEGORY	A	B	C	D	S-ILS 35	278-¾ 200 (200-¾)				S-LOC 35	540-1	462 (500-1)	540-1¾	462 (500-1¾)	CIRCLING	720-1	638 (700-1)	720-1¾ 638 (700-1¾)	720-2 638 (700-2)	UICK FIX MINIMUMS (DUAL VOR RECEIVERS OR DME REQUIRED)					S-LOC 35	400-1 322 (400-1)				CIRCLING	720-1	638 (700-1)	720-1¾ 638 (700-1¾)	720-2 638 (700-2)
Knots	60	90	120	150	180																																														
Min:Sec	5:12	3:28	2:36	2:05	1:44																																														
CATEGORY	A	B	C	D																																															
S-ILS 35	278-¾ 200 (200-¾)																																																		
S-LOC 35	540-1	462 (500-1)	540-1¾	462 (500-1¾)																																															
CIRCLING	720-1	638 (700-1)	720-1¾ 638 (700-1¾)	720-2 638 (700-2)																																															
UICK FIX MINIMUMS (DUAL VOR RECEIVERS OR DME REQUIRED)																																																			
S-LOC 35	400-1 322 (400-1)																																																		
CIRCLING	720-1	638 (700-1)	720-1¾ 638 (700-1¾)	720-2 638 (700-2)																																															