

ERA19LA186

Aircraft: Alisport Silent 2 Electro

Registration: N66911

S/N: 2079

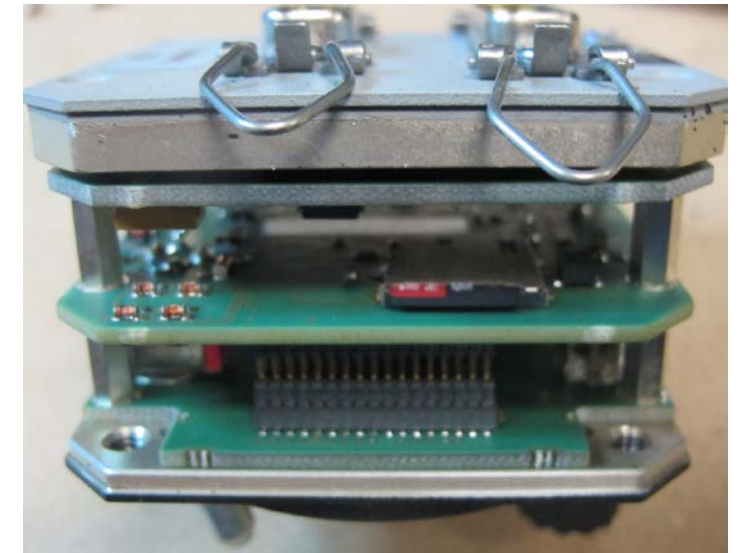
Manufactured: Unk

Michael Bauer – AS-40

09/24/2020

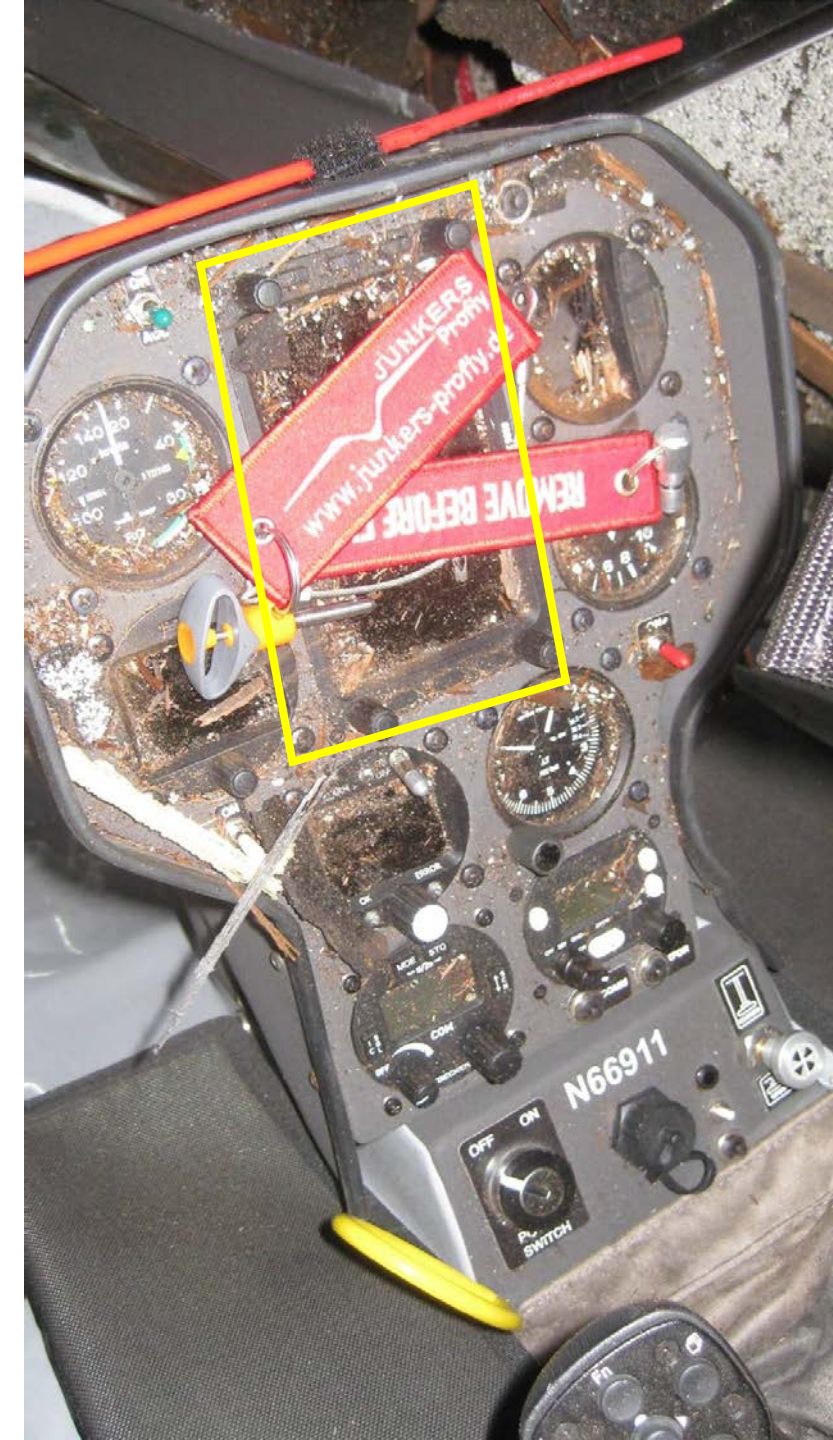
FCU – FES Control Unit:

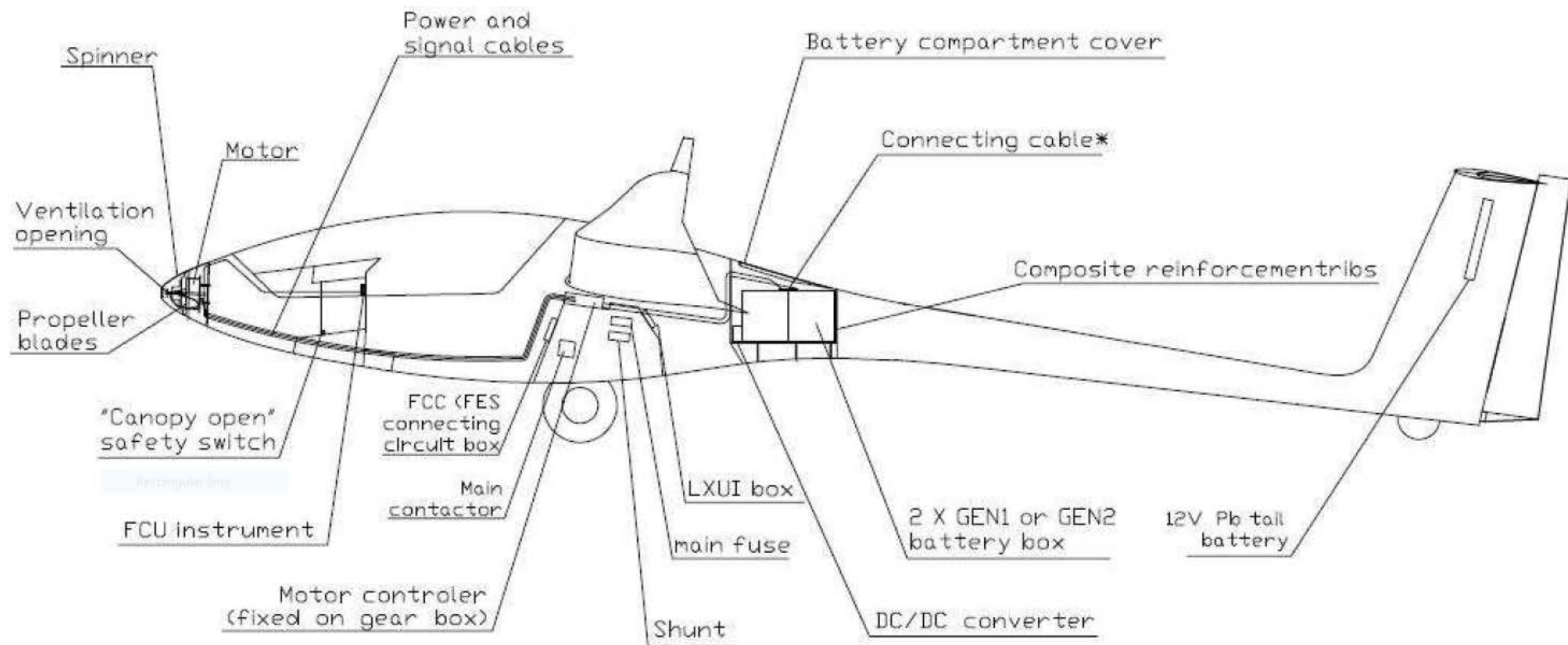
- Data stored on Micro SD card in unit
- Text Readable
- Contains data related to the Electrical/Battery System
- Records in Seconds from Start of Power Application
- Does not contain Altitude or Position Data
- Contained 6:26:07 (hh:mm:ss) of data
- Assuming the flight began at 00:14:40 based on canopy closed
- Power Applied 5 Times over flight for total of 01:09:16
 - 00:06:50-00:10:21 -> 00:03:31 (Assuming Taxi to RWY)
 - 00:14:46-00:24:16 -> 00:09:30 (Take-off and Departure)
 - 05:05:23-05:24:40 -> 00:19:17
 - 05:49:07-06:21:49 -> 00:32:42
 - 06:21:51-06:26:07 -> 00:04:16
- 06:22:51 – When impact occurred (Canopy Sensor)
- Total estimated flight time 06:08:11 (hh:mm:ss)
- Low Battery Annunciations
 - YELLOW INDICATION “Low Voltage, Reduce Power”
 - “Reduce Power” only indicated in motor running and power setting is above 8kW
 - When Pack Voltage Below 95V
 - 05:06:32 -> Indicated for 00:06:53
 - 06:08:46 -> Indicated for 00:13:05
 - 06:21:52 -> Indicated for 00:04:15 (Includes during impact)
- Empty Battery Annunciations
 - RED INDICATION “Critical Voltage, Stop FES Motor”
 - “Stop FES Motor” only indicated in motor running
 - When Pack Voltage Below 90V
 - 06:18:12
 - 06:18:31

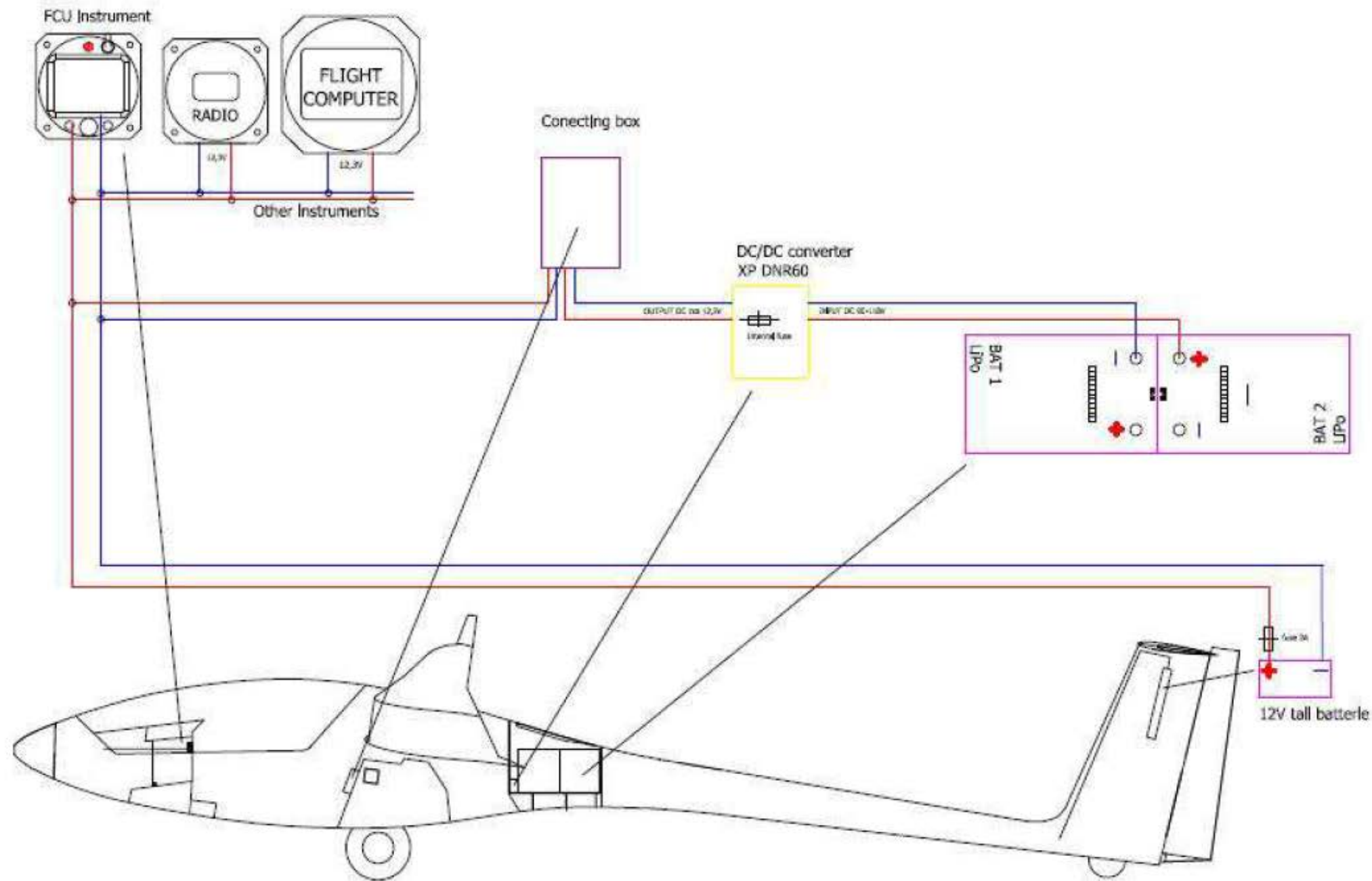


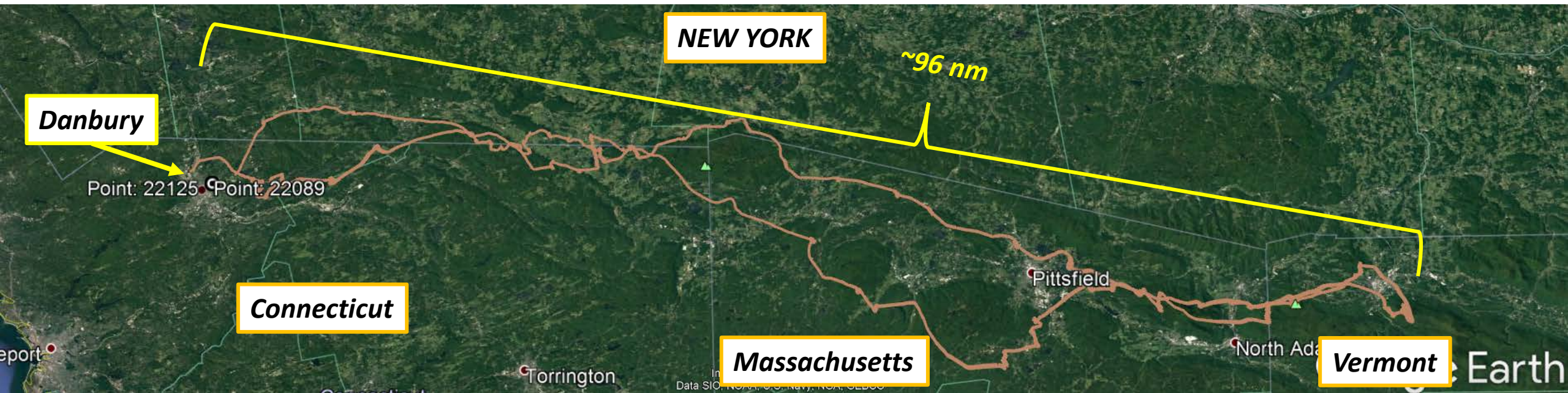
LX9050 GPS-Navigation System :

- Data stored on Unit and was downloaded
- IGC Format
- Converted using IGC program from internet
- IGC B Records contained:
 - Position, Altitude, Groundspeed, Environmental Noise Level (ENL), etc.
- Compared position data with the OPSVUE data to validate
- Total Flight Time in Data Set 06:08:45
- Used ENL from LX9050 and RPM from FCU to align datasets aid in positional information in conjunction with FCU power and alerts







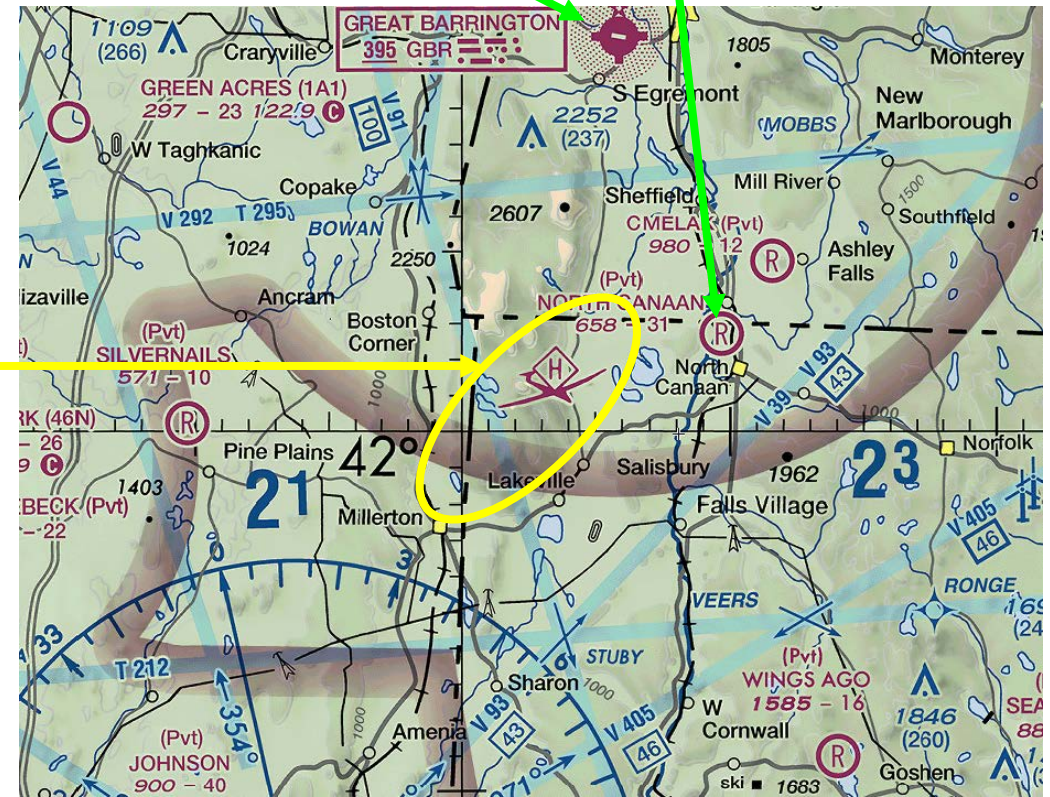


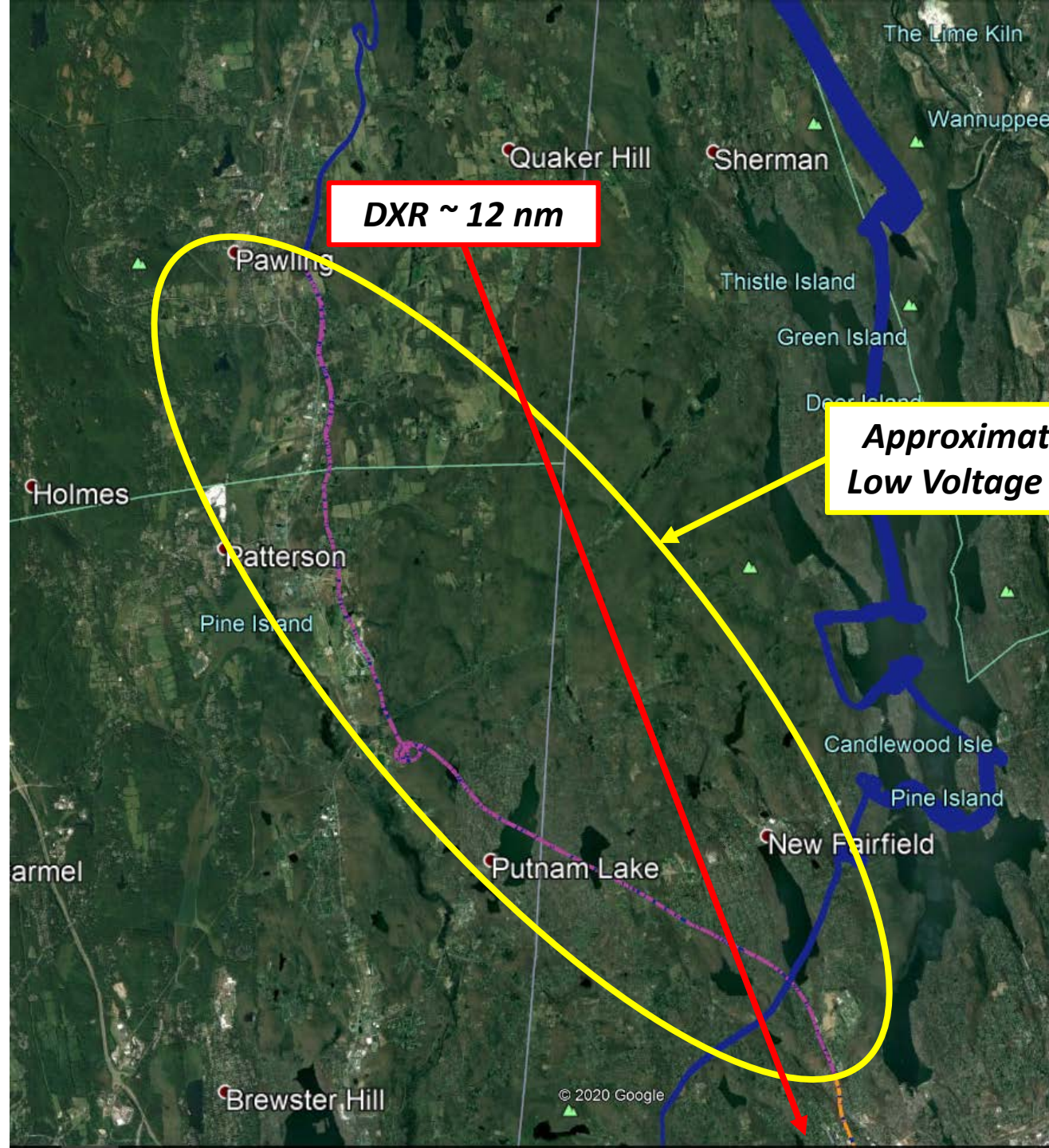
North Canaan Aviation Facilities Inc Airport
North Canaan, Connecticut, USA
(CT24)

Walter J Koladza Airport
Great Barrington, Massachusetts, USA
(KGBR)

DXR ~ 41 nm

**Approximate Area of
Low Voltage Indication**



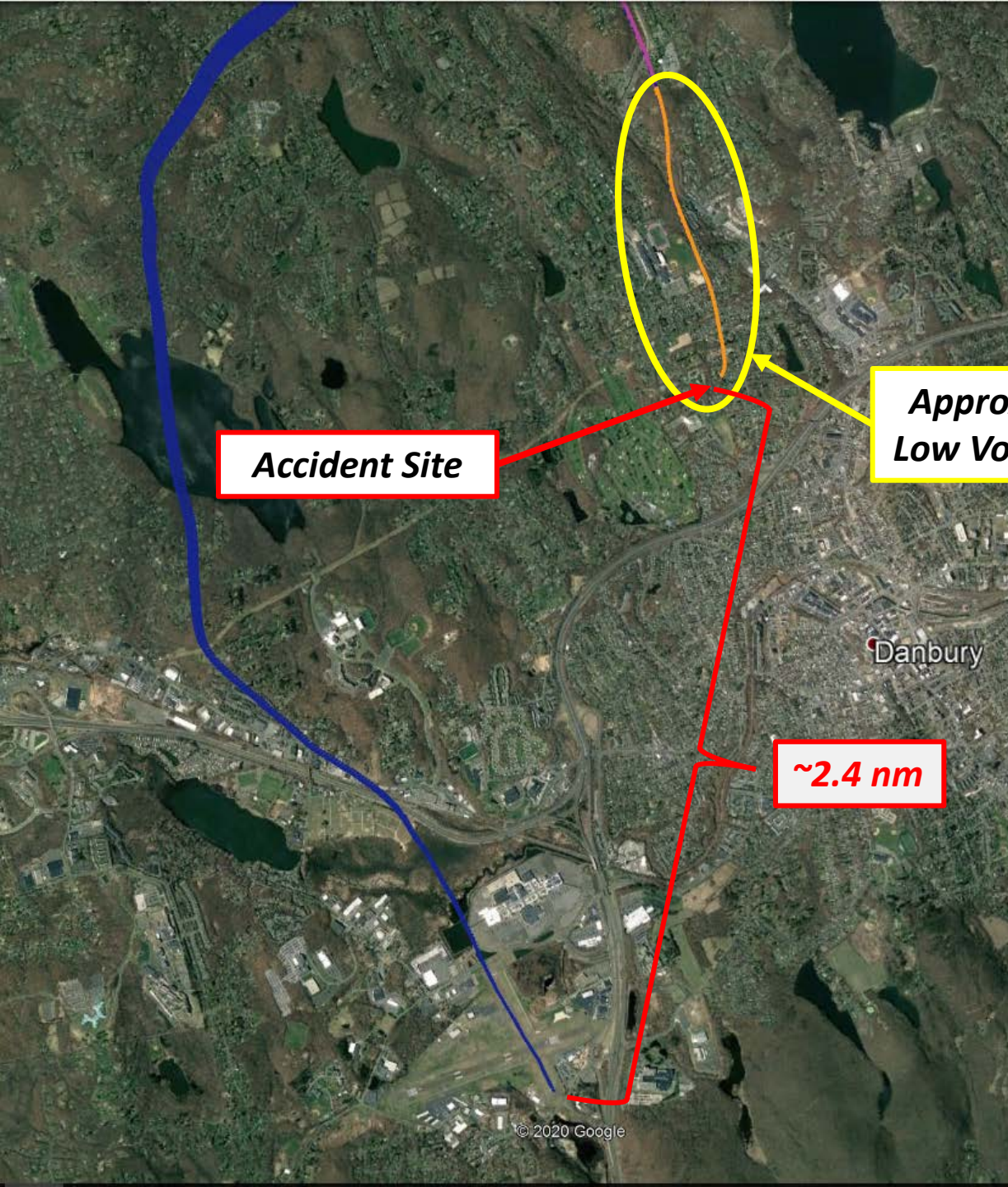


Stormville Airport
Stormville, New York, USA
(N69)

Danbury Municipal Airport
Danbury, Connecticut, USA
(KDXR)

**Approximate Area of
Low Voltage Indication**



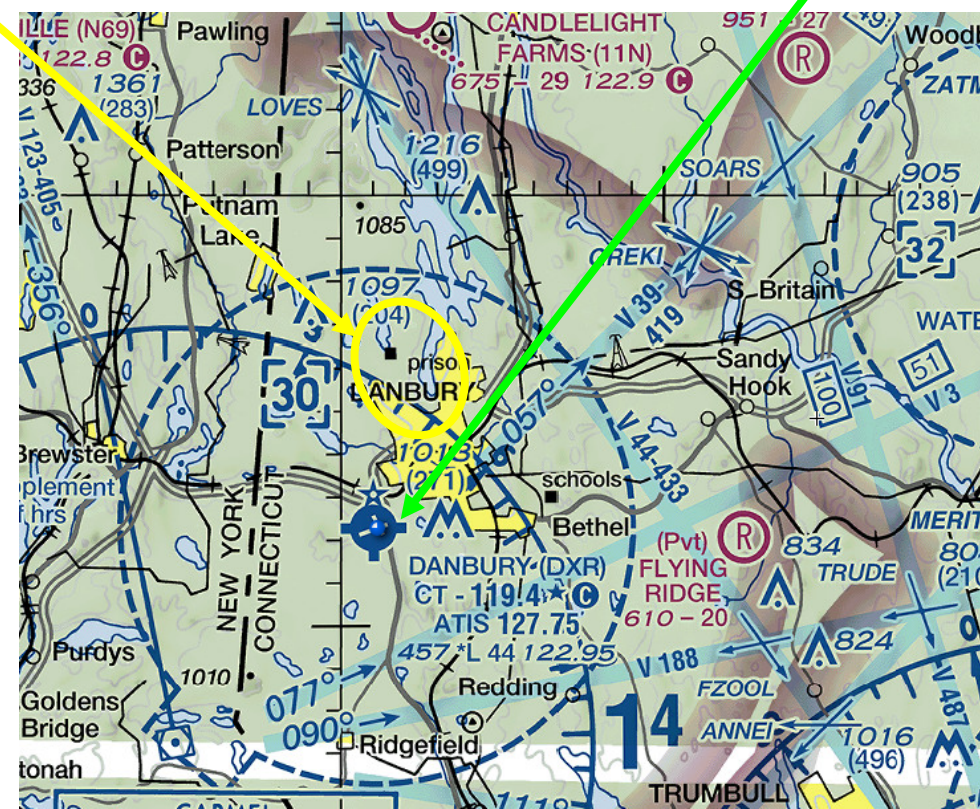


Accident Site

**Approximate Area of
Low Voltage Indication**

~2.4 nm

Danbury Municipal Airport
Danbury, Connecticut, USA
(KDXR)





ERA19LA186
Flight-Motor

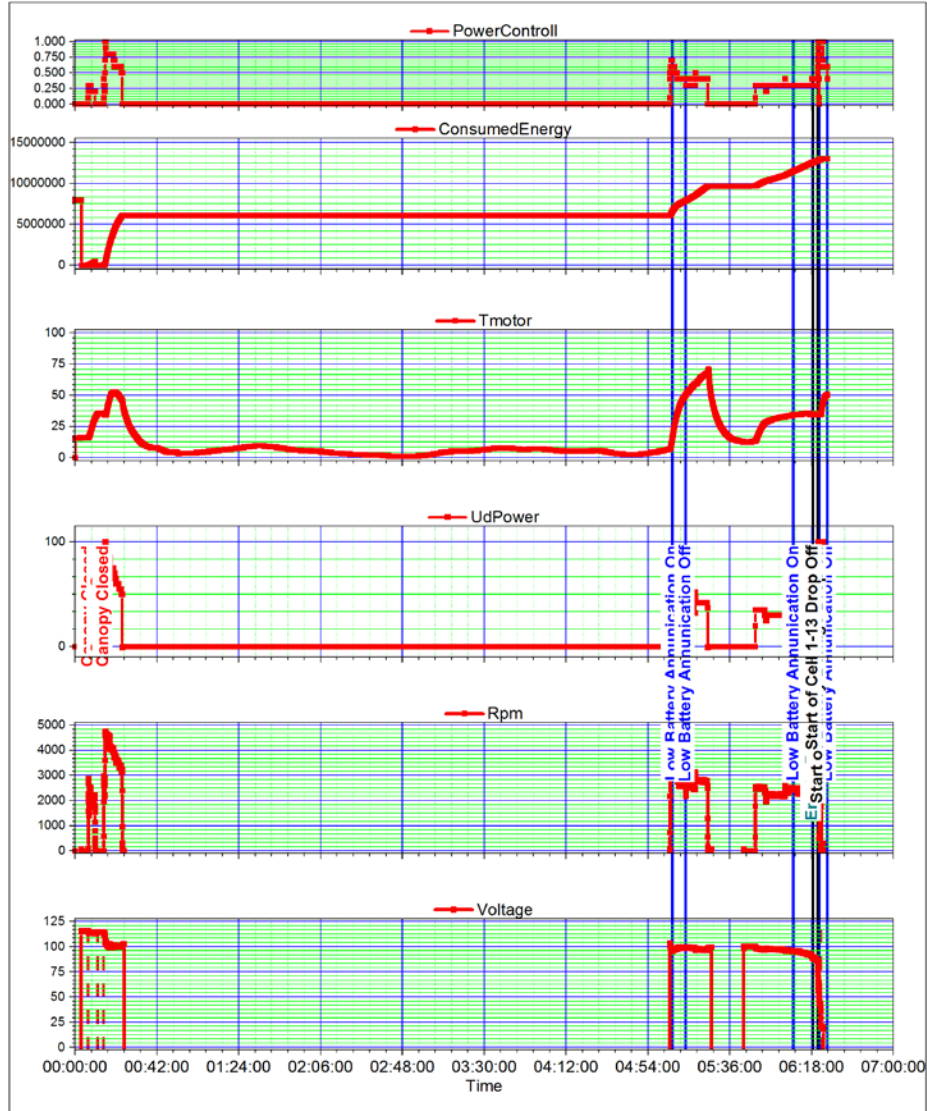
Office Of Aviation Safety

Prepared by :

Date : 12/16/2019

Revision: NC

Page : 2 /XX



ERA19LA186
Flight-Discretes Page 2
Flight

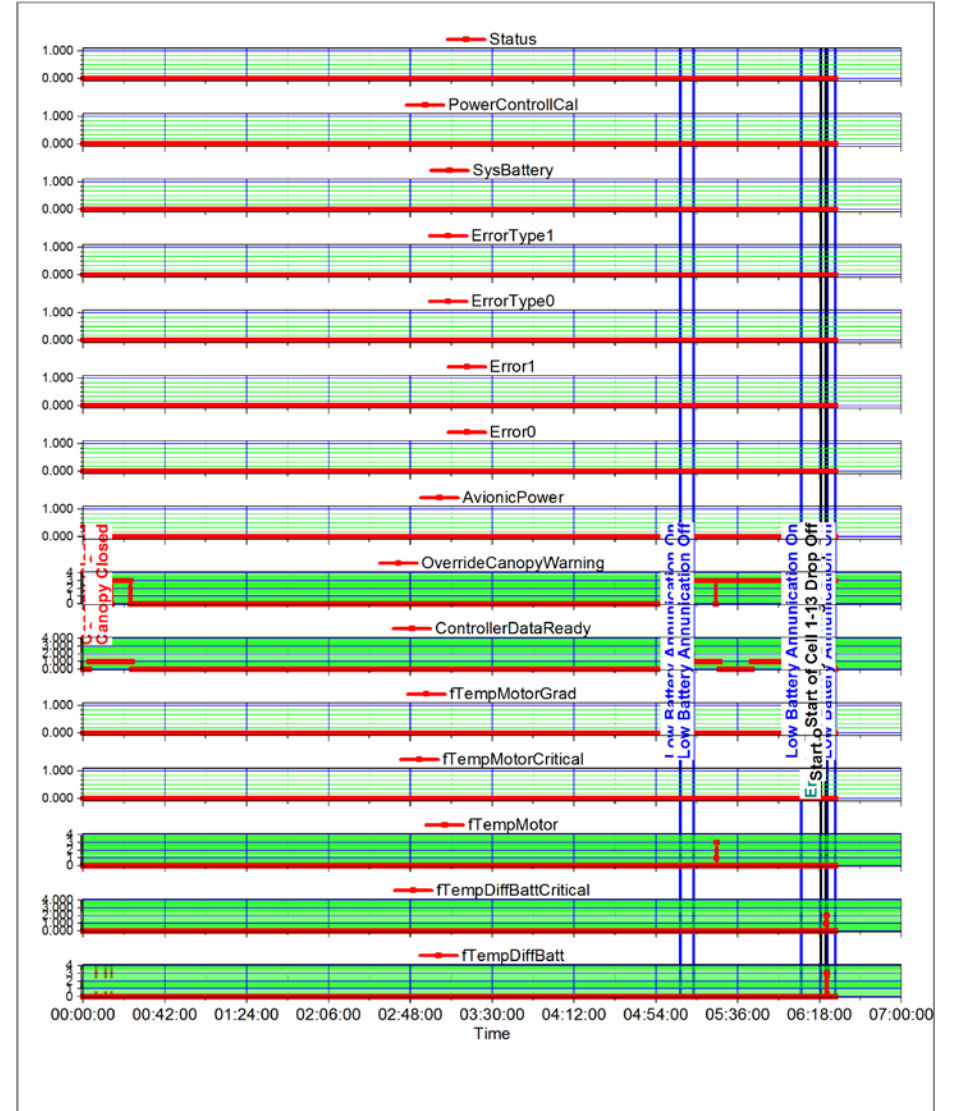
Office Of Aviation Safety

Prepared by :

Date : 12/16/2019

Revision: NC

Page : 5 /XX

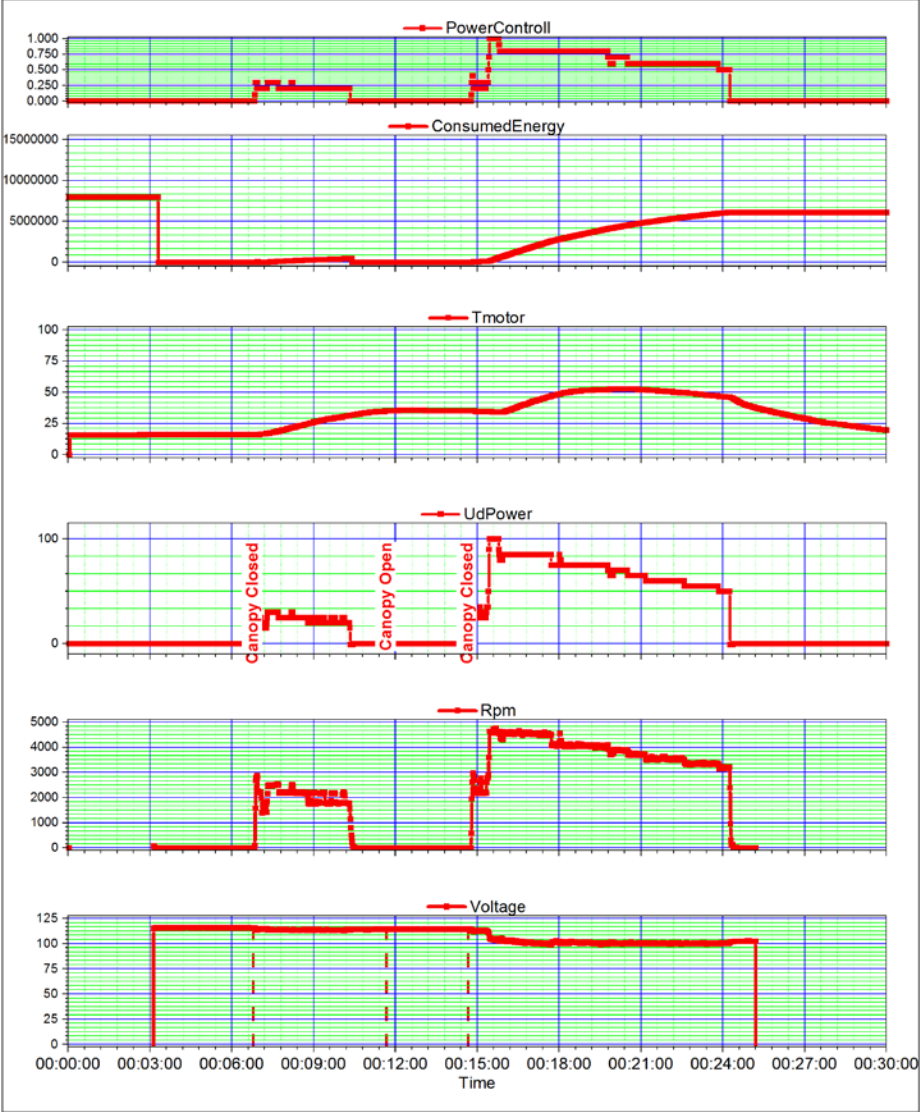




ERA19LA186
Motor Application 1-Motor

Office Of Aviation Safety

Prepared by :
Date : 12/16/2019
Revision: NC
Page : 2 /XX





ERA19LA186
Motor Application 2-Battery

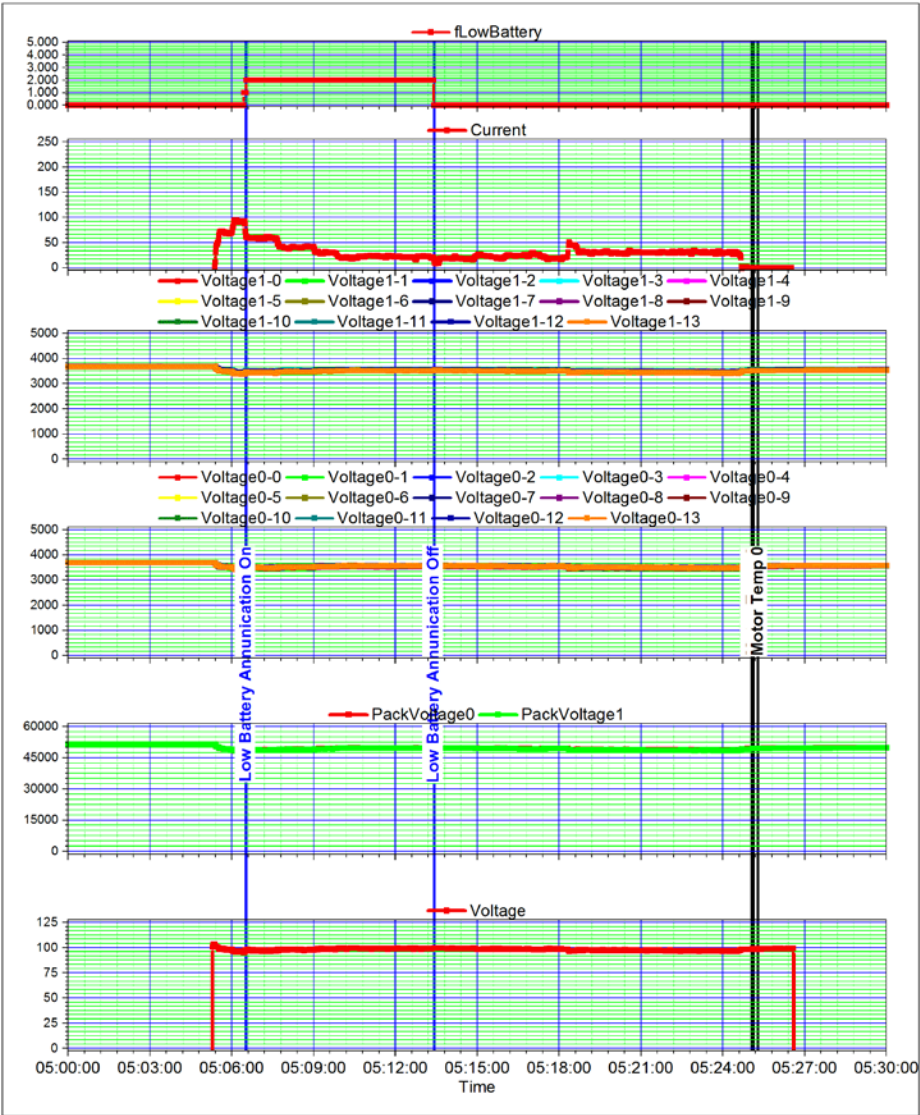
Office Of Aviation Safety

Prepared by :

Date : 12/16/2019

Revision: NC

Page : 1 /XX





ERA19LA186
Motor Application 3-Battery

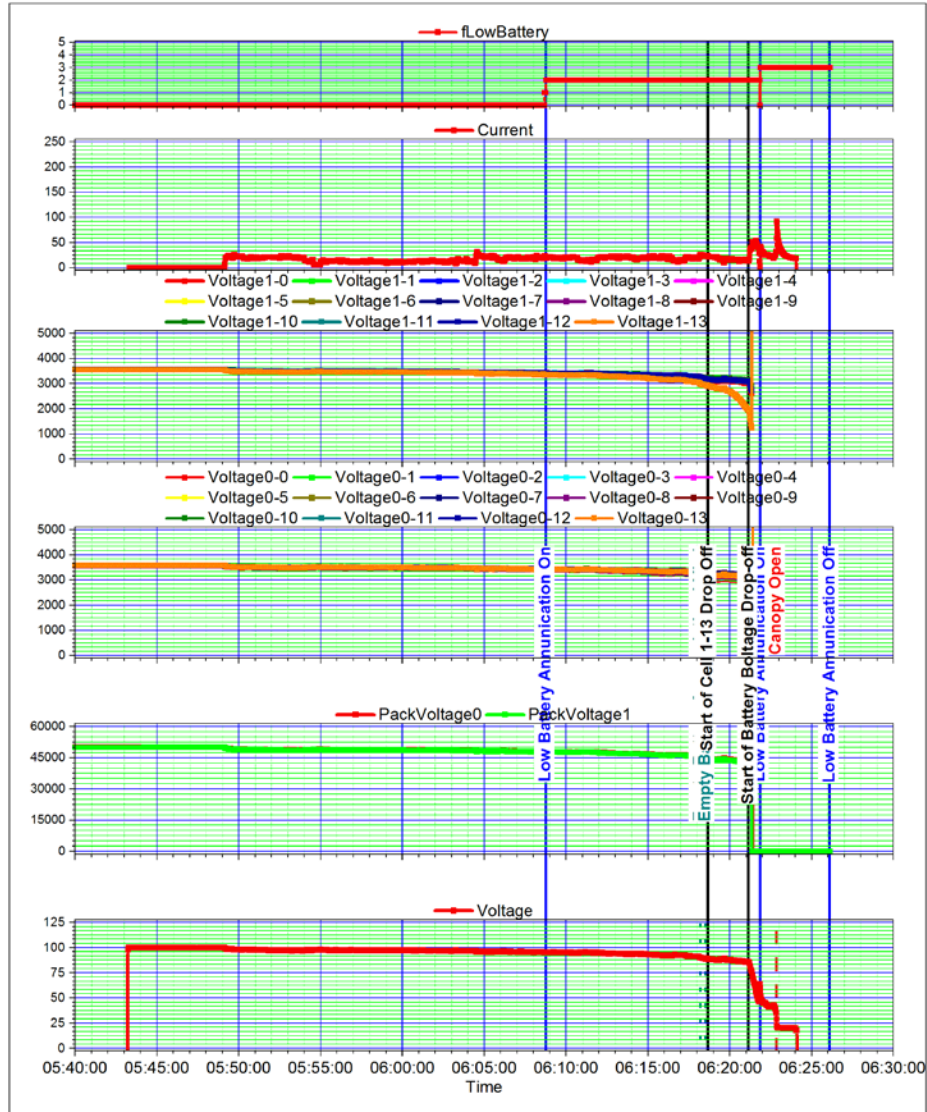
Office Of Aviation Safety

Prepared by :

Date : 12/16/2019

Revision: NC

Page : 1 /XX

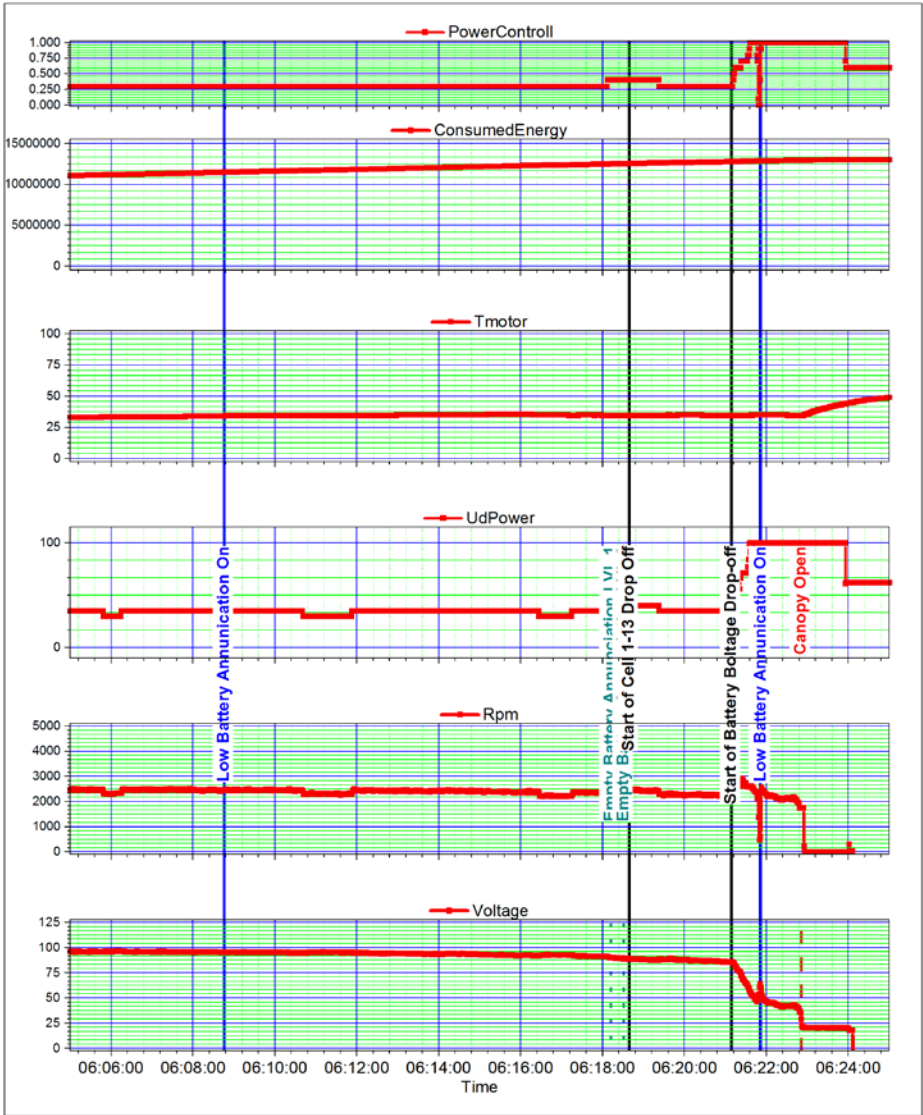




ERA19LA186
Low Batts-Motor

Office Of Aviation Safety

Prepared by :
Date : 12/16/2019
Revision: NC
Page : 2 /XX





ERA19LA186
Low Batts Final 5-Battery

Office Of Aviation Safety

Prepared by :

Date : 12/16/2019

Revision: NC

Page : 1 /XX

