

ATTACHMENT 1

TO

SYSTEMS GROUP CHAIRMAN'S FACTUAL REPORT

ERA18FA264

LH Servo Valve, S/N AUG80-1677D; MABS Data Sheets

RH Servo Valve, S/N JULY76-343D; MABS Data Sheets

Exemplar Servo Valve, S/N APR97-2363D; MABS Data Sheets

THIS DOCUMENT IS ISSUED BY THE GOODYEAR AEROSPACE CORPORATION, AIRCRAFT WHEEL AND BRAKE DIVISION AND NEITHER RECEIPT NOR POSSESSION THEREOF IMPLIES OR TRANSFERS ANY RIGHT IN, OR LICENSE TO USE THE DOCUMENT OR THE SUBJECT MATTER THEREOF, OR ANY DESIGN OR TECHNICAL INFORMATION SHOWN THEREON, OR ANY RIGHT TO REPRODUCE THIS DOCUMENT, OR ANY PART THEREOF, NEITHER THIS DOCUMENT NOR ANY INFORMATION CONTAINED THEREIN MAY BE COPIED, REPRODUCED, OR OTHERWISE USED WITHOUT FIRST OBTAINING THE WRITTEN PERMISSION OF THE GOODYEAR AEROSPACE CORPORATION, AIRCRAFT WHEEL AND BRAKE DIVISION.

NO. 5D1-1869
 CODE IDENT 25500
 REV. J
 PAGE 8

INSPECTION LOG SHEET

ASSY NO. 9542732-2
 ASSY NO.: 9542732
 ASSY NO.: A9542732
 SERIAL NO.: 1677A



ASSY NO. 6002456 DATE:

OIL TEMPERATURE 96

NEW USED NEW SECOND STAGE

PAR. NO.	REQUIREMENTS		ACTUAL VALUES
	MIN	MAX	
3.2	450 OHMS	550 OHMS	493
3.3	100 MEGOHMS		210K
3.4	ANY LEAKAGE, FAILURE OR SET		YES (NO)
3.5.1	PRESS. OSC .60 PSI OR LESS		YES NO
3.5.2	0 MA	1500 PSI	1500 PSI
	1 "	1265 "	1500 "
	2 "	1025 "	1500 "
	3 "	800 "	1270 "
	4 "	570 "	1035 "
	5 "	340 "	800 "
	6 "	100 "	575 "
	7 "	0 "	345 "
	8.5 "	0 "	0 "
3.5.3	0 "	300 "	300 "
	1 "	180 "	300 "
	2 "	60 "	300 "
	3 "	0 "	180 "
	4 "	0 "	60 "
	4.5 "	0 "	0 "
3.6.1	-	600 PER SEC	55
3.7.1	-	300 PSI	575
3.7.2	-	300 PSI	490

TESTED BY :
 INSPECTOR:
 DATE TESTED:

INSPECTION STAMP

10hr

1677D

NO. 5D1-1869
 CODE IDENT 25500
 REV _____
 PAGE 6

OIL TEMPERATURE _____

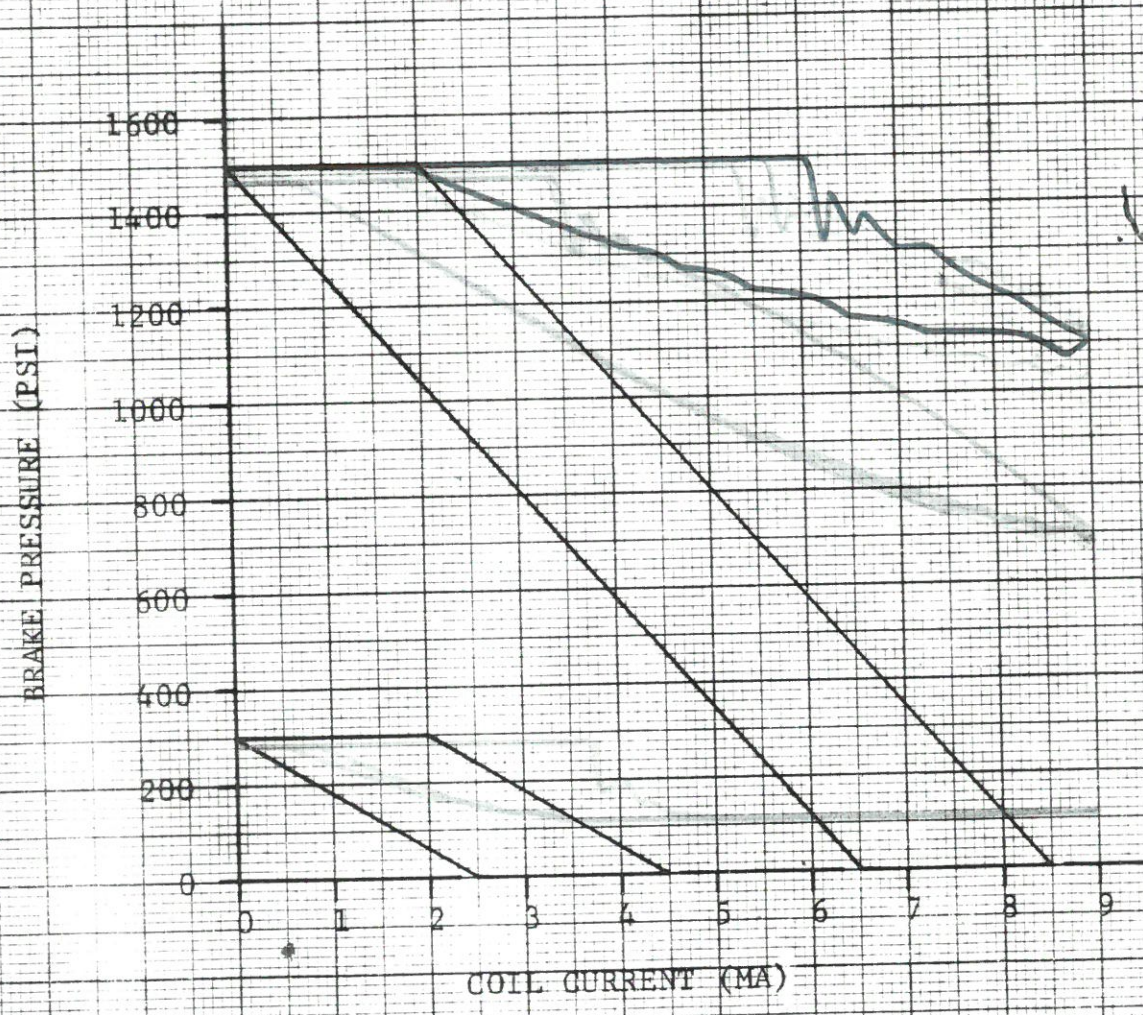


FIGURE 1

10 X 10 TO THE 1/2 INCH 359-11 NEUFEL & ESSER CO. CHICAGO, ILL.

1869

THIS DOCUMENT IS ISSUED BY THE GOODYEAR AEROSPACE CORPORATION, AIRCRAFT WHEEL AND BRAKE DIVISION AND NEITHER RECEIPT NOR POSSESSION THEREOF IMPLIES OR TRANSFERS ANY RIGHT IN, OR LICENSE TO USE THE DOCUMENT OR THE SUBJECT MATTER THEREOF, OR ANY DESIGN OR TECHNICAL INFORMATION SHOWN THEREON, OR ANY RIGHT TO REPRODUCE THIS DOCUMENT, OR ANY PART THEREOF. NEITHER THIS DOCUMENT NOR ANY INFORMATION CONTAINED THEREIN MAY BE COPIED, REPRODUCED, OR OTHERWISE USED WITHOUT FIRST OBTAINING THE WRITTEN PERMISSION OF THE GOODYEAR AEROSPACE CORPORATION, AIRCRAFT WHEEL AND BRAKE DIVISION.

NO. 5D1-1869
 CODE IDENT 25500
 REV. J
 PAGE 8

INSPECTION LOG SHEET

ASSY NO. 9542732-2
 ASSY NO.: 9542732
 ASSY NO.: A9542732
 SERIAL NO.: 343D



ASSY NO. 6002456

DATE:

OIL TEMPERATURE _____

NEW

USED

NEW SECOND STAGE

PAR. NO.	REQUIREMENTS		ACTUAL VALUES	
	MIN	MAX		
3.2	450 OHMS	550 OHMS	513	
3.3	100 MEGOHMS		>10K	
3.4	ANY LEAKAGE, FAILURE OR SET		YES	NO
3.5.1	PRESS. OSC .60 PSI OR LESS		YES	NO
3.5.2	0 MA	1500 PSI	1500 PSI	
	1 "	1265 "	1500 "	
	2 "	1025 "	1500 "	
	3 "	800 "	1270 "	
	4 "	570 "	1035 "	
	5 "	340 "	800 "	
	6 "	100 "	575 "	
	7 "	0 "	345 "	
	8.5 "	0 "	0 "	
3.5.3	0 "	300 "	300 "	
	1 "	180 "	300 "	
	2 "	60 "	300 "	
	3 "	0 "	180 "	
	4 "	0 "	60 "	
	4.5 "	0 "	0 "	
3.6.1	-	300 PER SEC	140	
3.7.1	-	300 PSI	565	
3.7.2	-	300 PSI	380	

TESTED BY :

INSPECTION STAMP

INSPECTOR:

DATE TESTED:

10h

343D

10

NO. 5D1-1869

CODE IDENT 25500

REV _____

PAGE 6

OIL TEMPERATURE _____

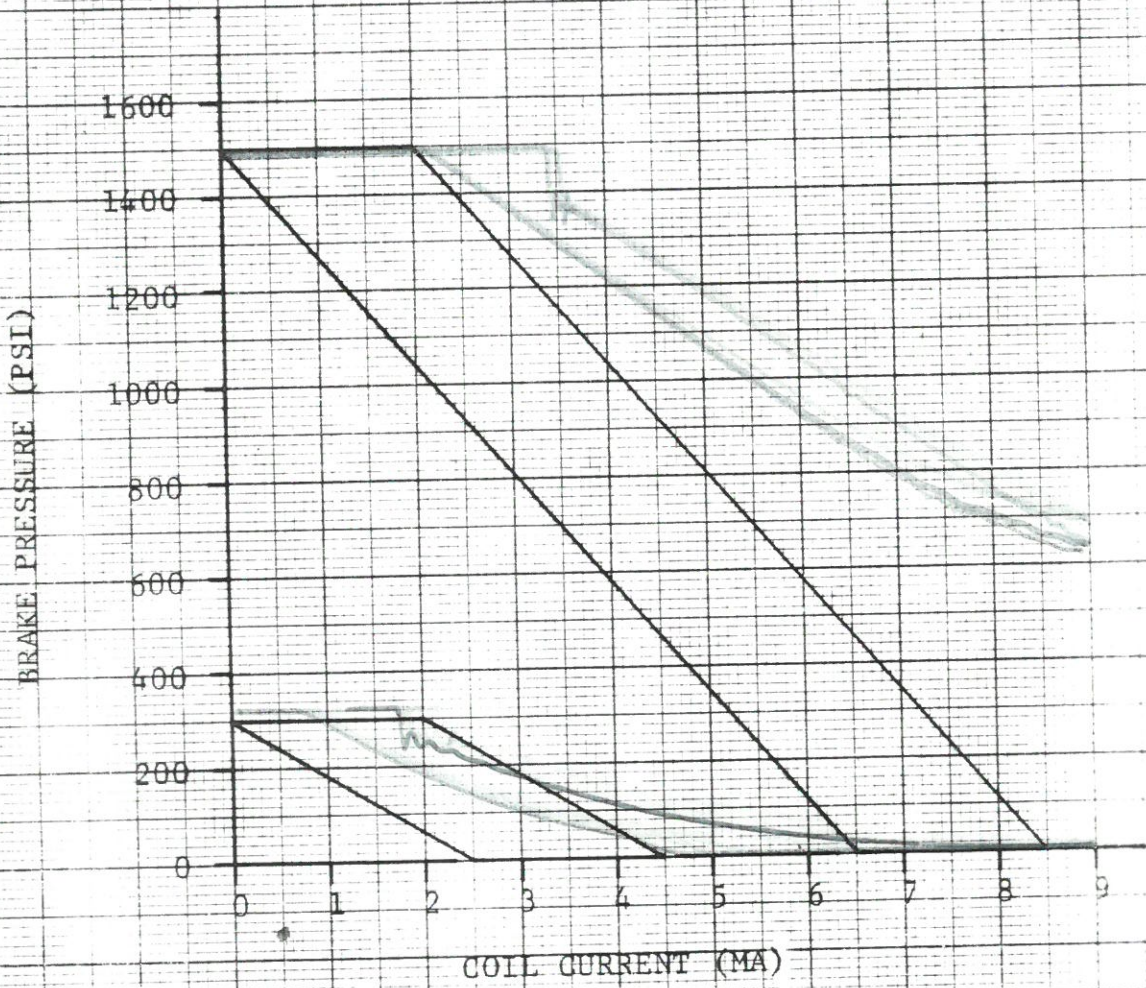


FIGURE 1

104-1010 THE BRINCH 303-11
ALPHAL & BROS. CO. 5-10-54


THIS DOCUMENT IS ISSUED BY THE GOODYEAR AEROSPACE CORPORATION, AIRCRAFT WHEEL AND BRAKE DIVISION AND NEITHER RECEIPT NOR POSSESSION THEREOF IMPLIES OR TRANSFERS ANY RIGHT IN, OR LICENSE TO USE THE DOCUMENT OR THE SUBJECT MATTER THEREOF, OR ANY DESIGN OR TECHNICAL INFORMATION SHOWN THEREON, OR ANY RIGHT TO REPRODUCE THIS DOCUMENT, OR ANY PART THEREOF, NEITHER THIS DOCUMENT NOR ANY INFORMATION CONTAINED THEREIN MAY BE COPIED, REPRODUCED, OR OTHERWISE USED WITHOUT FIRST OBTAINING THE WRITTEN PERMISSION OF THE GOODYEAR AEROSPACE CORPORATION, AIRCRAFT WHEEL AND BRAKE DIVISION.

NO. 5D1-1869
 CODE IDENT 25500
 REV. J
 PAGE 8

INSPECTION LOG SHEET

ASSY NO. 9542732-2 ASSY NO. 6002456 DATE: _____
 ASSY NO.: 9542732
 ASSY NO.: A9542732
 SERIAL NO.: APR 97. 2363 D OIL TEMPERATURE 90
 NEW USED NEW SECOND STAGE

PAR. NO.	REQUIREMENTS		ACTUAL VALUES
	MIN	MAX	
3.2	450 OHMS	550 OHMS	510
3.3	100 MEGOHMS		210 K
3.4	ANY LEAKAGE, FAILURE OR SET		(YES) NO
3.5.1	PRESS. OSC .60 PSI OR LESS		(YES) NO
3.5.2	0 MA	1500 PSI	1500 PSI
	1 "	1265 "	1500 "
	2 "	1025 "	1500 "
	3 "	800 "	1270 "
	4 "	570 "	1035 "
	5 "	340 "	800 "
	6 "	100 "	575 "
	7 "	0 "	345 "
	8.5 "	0 "	0 "
3.5.3	0 "	300 "	300 "
	1 "	180 "	300 "
	2 "	60 "	300 "
	3 "	0 "	180 "
	4 "	0 "	60 "
	4.5 "	0 "	0 "
3.6.1	-	600 PER SEC	308 / MIN
3.7.1	-	300 PSI	275
3.7.2	-	300 PSI	280

TESTED BY : 
 INSPECTOR:
 DATE TESTED: 3.13.19

INSPECTION STAMP

10hr

NO. 5D1-1869

CODE IDENT 25500

REV J

PAGE 6

OIL TEMPERATURE 90

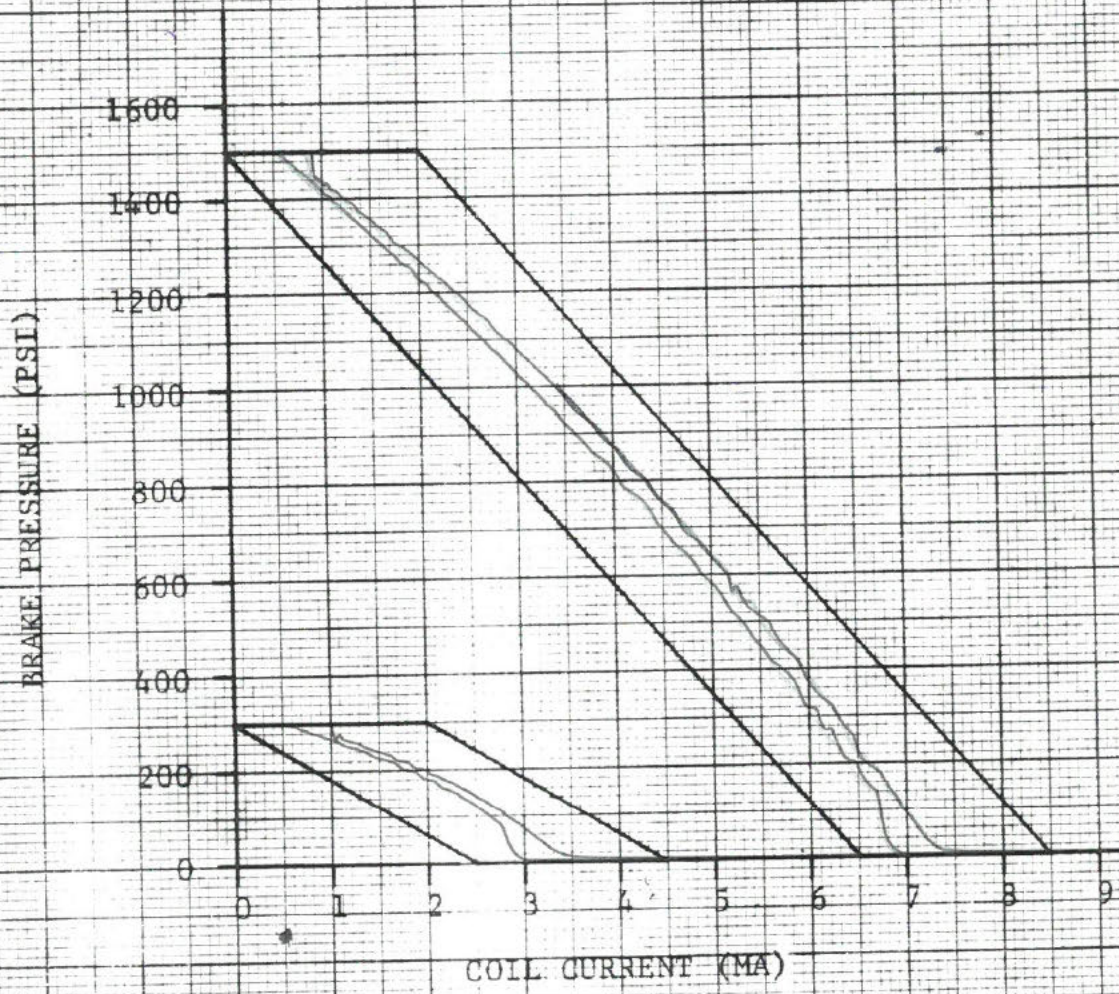


FIGURE 1

10 X 10 TO THE 1/2 INCH 309-11 KEUFFEL & ESSER CO. U.S.A.

1869