



**Survival Factors Attachment-
Investigation Photographs**

**Reed, PA
RRD22LR003**

(13 pages)



Figure 1 Photograph showing the front and right-side view of Spiker #2 at final rest. Spiker #3, located north of Spiker #2, is visible in the background.



Figure 2 Photograph looking south at the rear of Spiker #2. Standoff warning notices to employees working to the rear of the equipment are highlighted by the yellow circles.



Figure 3 Photograph of the left (operator's) side of Spiker #2. The highlighted mark on the equipment indicates the location underneath the machine where the worker was found.



Figure 4 Photograph of the interior of the spike machine looking from the right side towards the left operator seat. The center seat, facing backwards, is for the spike feeder worker.



Figure 5 is the view from the left operator's seat of the track behind the spike machine. The yellow circle indicates the image of an individual standing in the center of the track.



Figure 6 The view of the area underneath the equipment as seen by the operator in the left seat of the spike machine.



Figure 7 Shows the operator's view of the area underneath the spike machine and how the operator would have seen the worker once he had passed underneath the equipment.

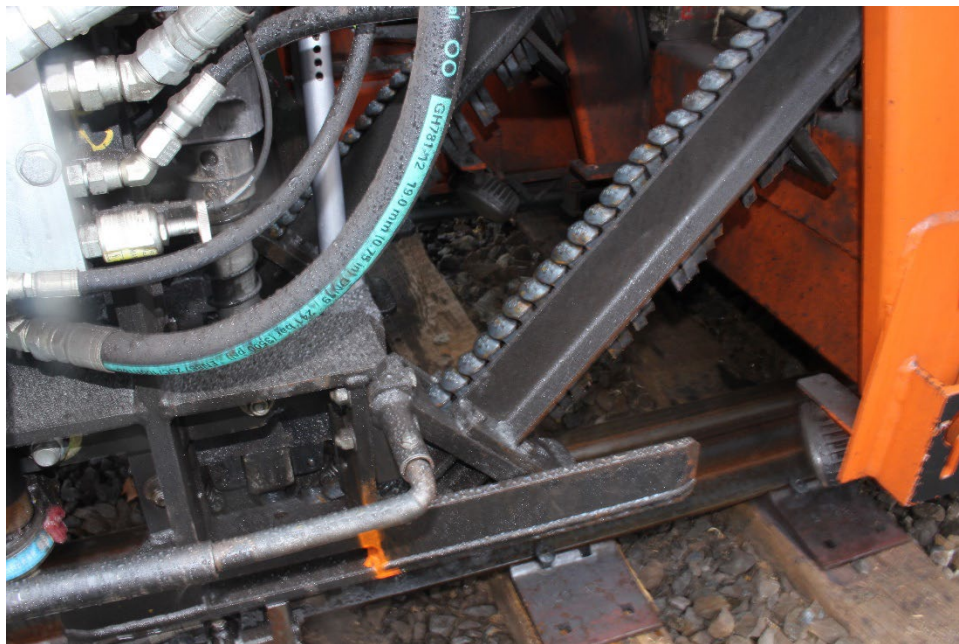


Figure 8 Photograph of the view of the area underneath the spike machine looking in from outside of the equipment.



Figure 9 Looking southward down the track at Spiker #2. The final rest position of the worker underneath the equipment is indicated by the orange paint marks in the foreground. In the background, the green paint marks (circled in yellow) indicate the approximate point of contact between the equipment and the worker.



Figure 10 Photograph of the worker's personal effects found on the scene, to include the black backpack he was wearing at the time of the accident and a pair of safety glasses (highlighted by the yellow circle)



Figure 11 Closeup of the worker's hardhat light found on the scene. Post-accident, the light was still functional.



Figure 12 Photograph taken of the undercarriage of the spike machine showing the worker contact with the metal frame as he traveled underneath.



Figure 13 Photograph taken from underneath the spike machine, looking towards the left side of the equipment, showing the final rest position of the worker under the equipment. The spike feeder belt is visible in the background.



Figure 14 Photograph of the undercarriage of Spiker #2 showing the paint spray on the under frame caused by the exploding can of paint at the time of impact.



Figure 15 Photograph of the green paint smeared on the metal frame, transferred from the worker's paint covered backpack.



Figure 16 Evidence of the workers presence underneath the equipment which also shows directionality of the worker's body movements during the impact.



Figure 17 Photograph of more paint transfer from the worker's backpack to the undercarriage of the spike machine.



Figure 18 Photograph of the hardhat worn by the worker at the time of the accident. The hardhat was not issued equipment by National Salvage but still met regulatory requirements.



Figure 19 Photograph of radio worn by worker and recovered at the coroner's office.



Figure 20 Photograph of the outer hooded jacket worn by the worker at the time of the accident.



Figure 21 Photograph of the interior shirt worn by the worker. The shirt conforms to the ANSI Class 2 standard.



Figure 22 Photograph of insulated coveralls worn by worker at the time of the accident. **Figure 23** is a photograph of the manufacturer's label showing that the garment conforms to ANSI Class 1 standards.



Figure 24 Photograph of left work boot recovered from the worker at the coroner's office.