

OFFICIAL COPY

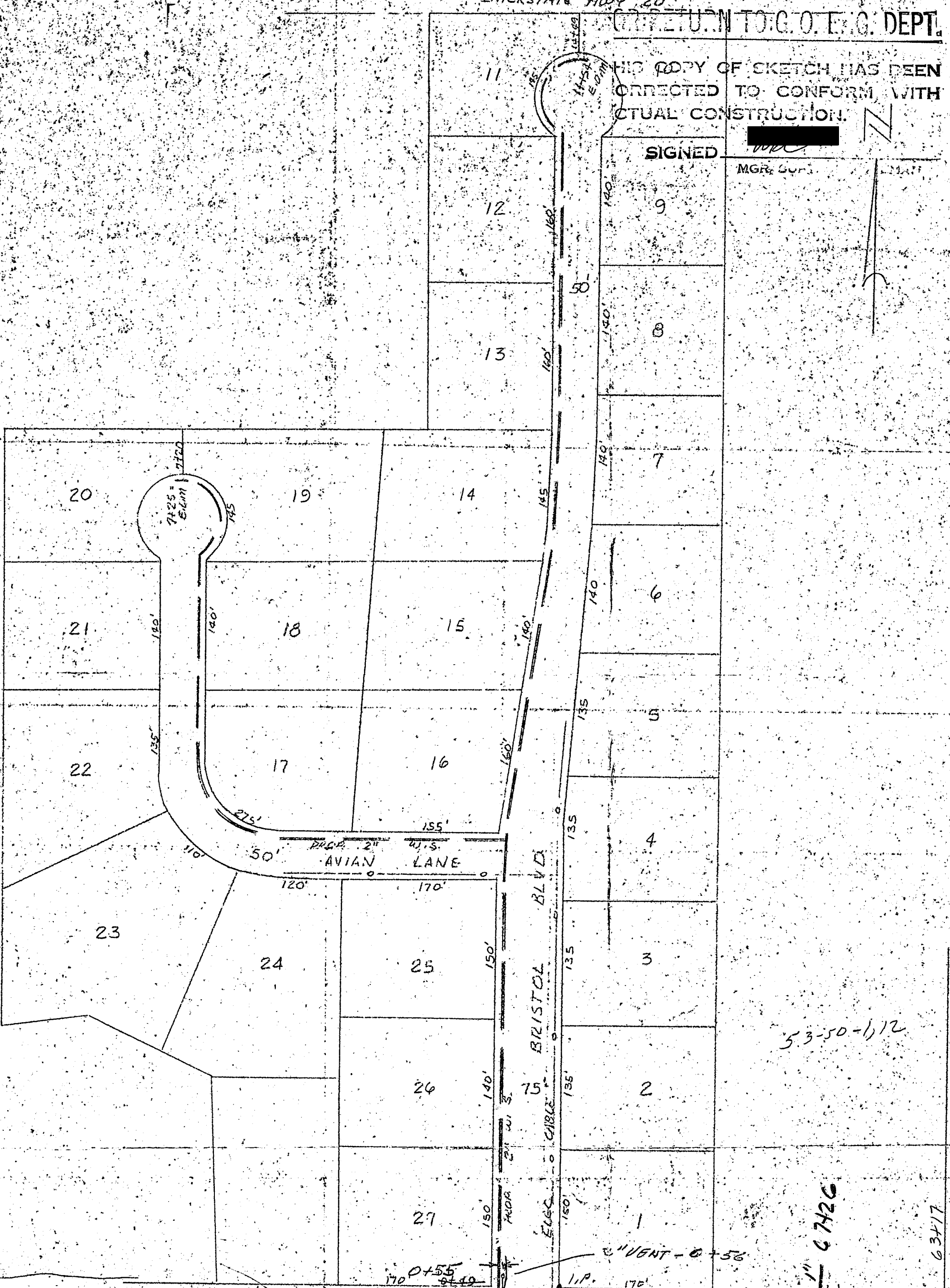
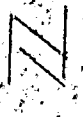
INTERSTATE HWY 20

RETURN TO: G. O. E. G. DEPT.

THIS COPY OF SKETCH HAS BEEN CORRECTED TO CONFORM WITH ACTUAL CONSTRUCTION.

SIGNED

MGR. SUR.



53-50-1, 12

67420

63417

WEST HIGHLAND DR.

(LOT) CHIMNEY PIPES SUB.

RAYMOND RD.

(B.T.) 0+15

0+03 - LEG & CASING HWY NO. 18
0+015 - 2" INS. D.C. T.W. V.B.
0+01 - 2" VALVE & BOX
0+00

372 12/13
2-7-67
G.H.P.

WA-66-2513
JACKSON: 2" MAIN TO WINGFIELD PLACE SUBD.
URBIN REV. - HINDS CO. MAP SHEET 53-50-1
SEPT. 13, 1966
N.T.S.

POSTED TO
FEB 14 1967
MILEAGE REPORT

APPROVED FOR CONSTRUCTION
MISSISSIPPI VALLEY GAS CO.
CHIEF ENGINEER

DATE 9-22-66

WINGFIELD MAPPED
HIGH SCHOOL 11-29-67
By

151
26 X 51

7144 M

62483
CARTER HILL