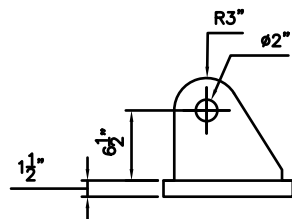


**TIE-DOWN HARDWARE NOTES:**

1. TURNBUCKLE SIZE (MINIMUM) - 2", 37KIP WORKING LOAD LIMIT (LIFTING)/185KIP ULTIMATE STRENGTH
2. SHACKLE SIZE (MINIMUM) - 25TON WORKING LOAD LIMIT (LIFTING)/125T ULTIMATE STRENGTH
3. 1/2" FILLET WELD TO DECK ALL THE WAY AROUND

**CRANE TIE-DOWNS**



**TIE-DOWN HARDWARE NOTES:**

1. WIRE ROPE SIZE (MINIMUM) - 1" IWRC, 51 TON BREAKING STRENGTH
2. SHACKLE SIZE (MINIMUM) - 12 TON WORKING LOAD LIMIT (LIFTING)/60T ULTIMATE STRENGTH
3. USE CABLE CLAMPS IF CABLES DO NOT HAVE EYES.

**CRANE BELLY CABLE**

FOR REVIEW

A	##/##/##	##	##	FOR REVIEW
REV	DATE	DESIGN	DRAWN	REMARKS
<b>HRCP NORFOLK, VA</b>				
<b>HRBT EXPANSION LR1300 ON CAROLYN-SKAVES PLANVIEW</b>				
<b>SEAWARD MARINE CORP.</b> 602 FORD DRIVE NORFOLK, VA 23532 Phone: (757) 558-3939				
SCALE	Drawing	Carolyn-S Tie Downs	Approved	
NTS	Number			