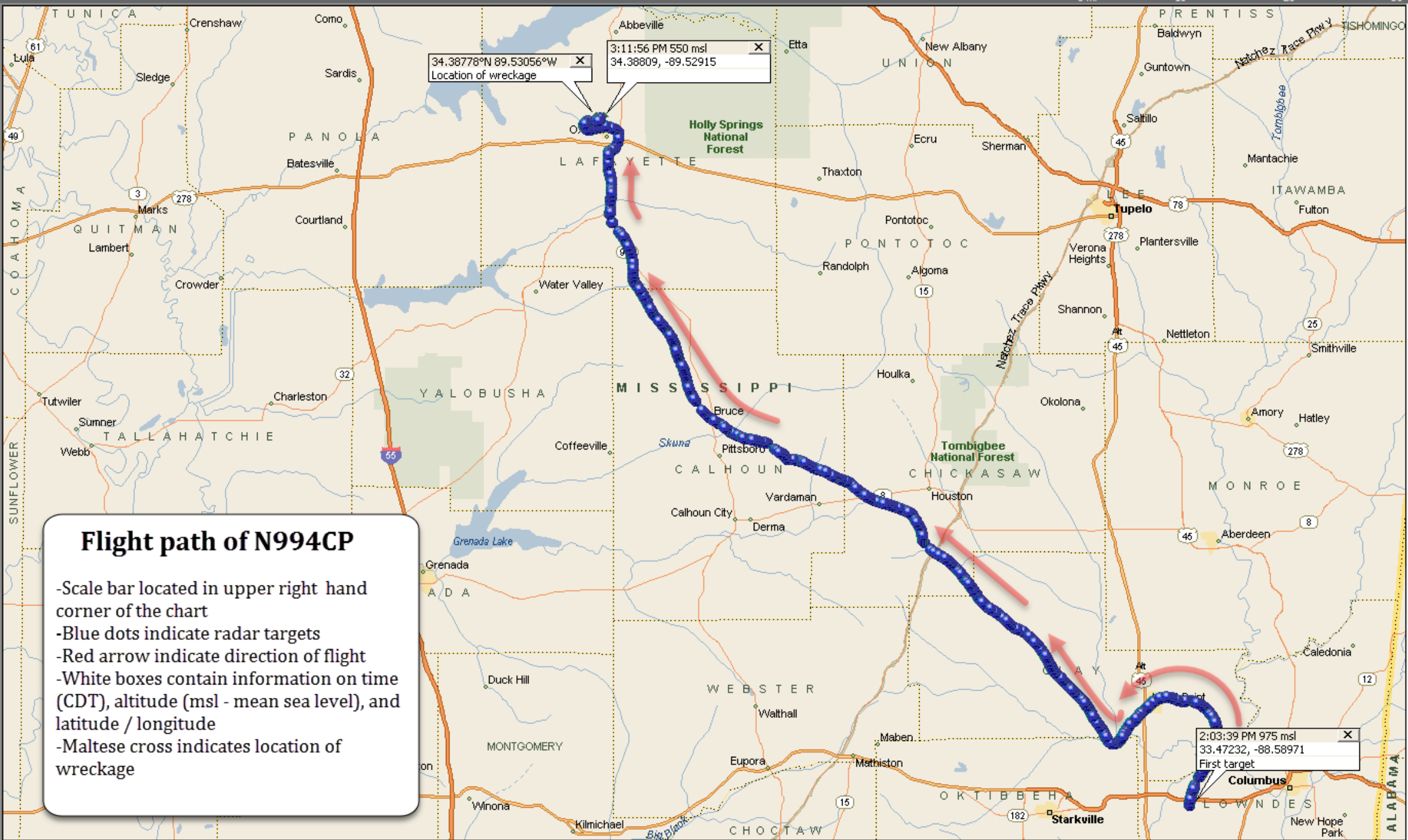


CEN19FA212
N994CP



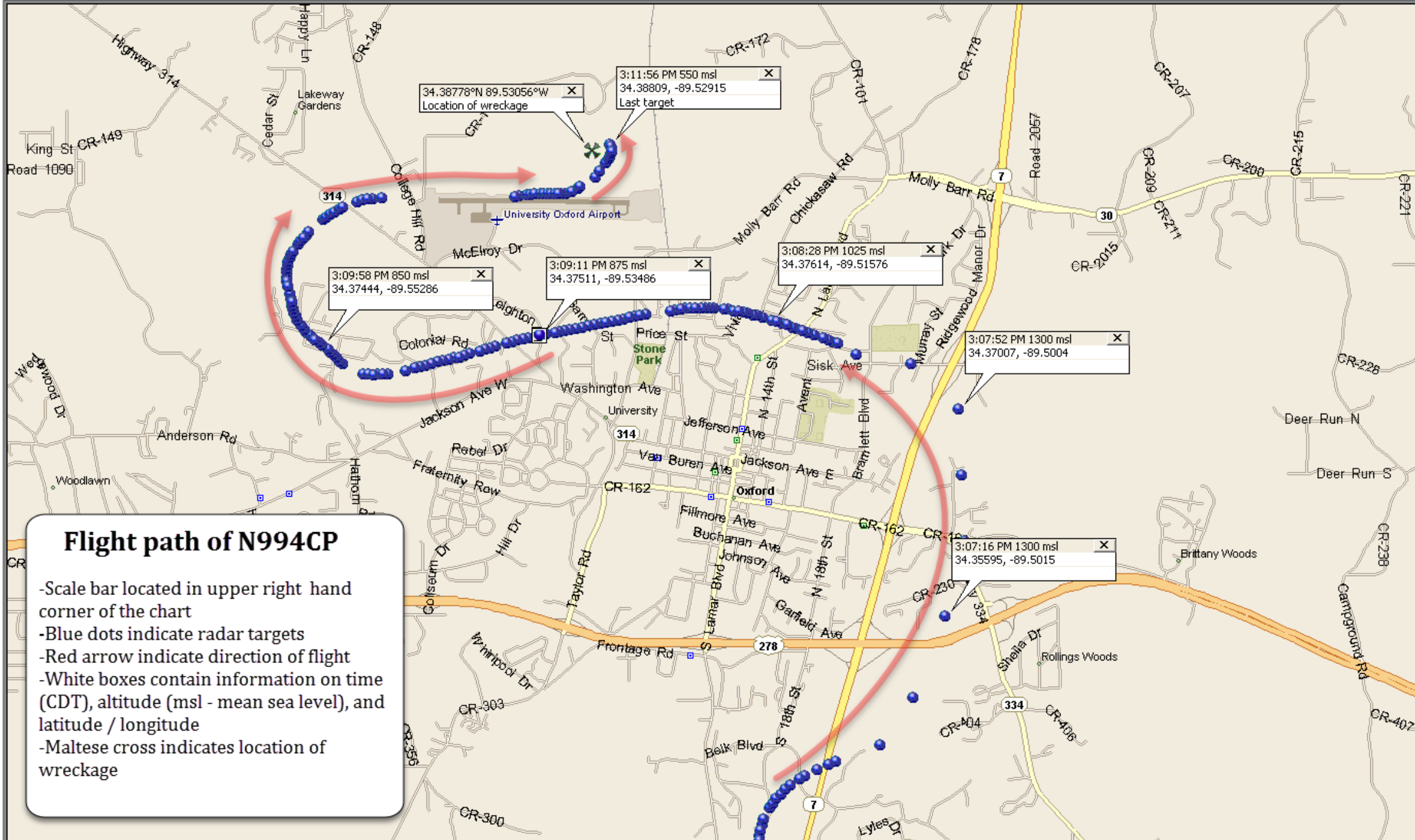
34.38778°N 89.53056°W
Location of wreckage

3:11:56 PM 550 msl
34.38809, -89.52915

2:03:39 PM 975 msl
33.47232, -88.58971
First target

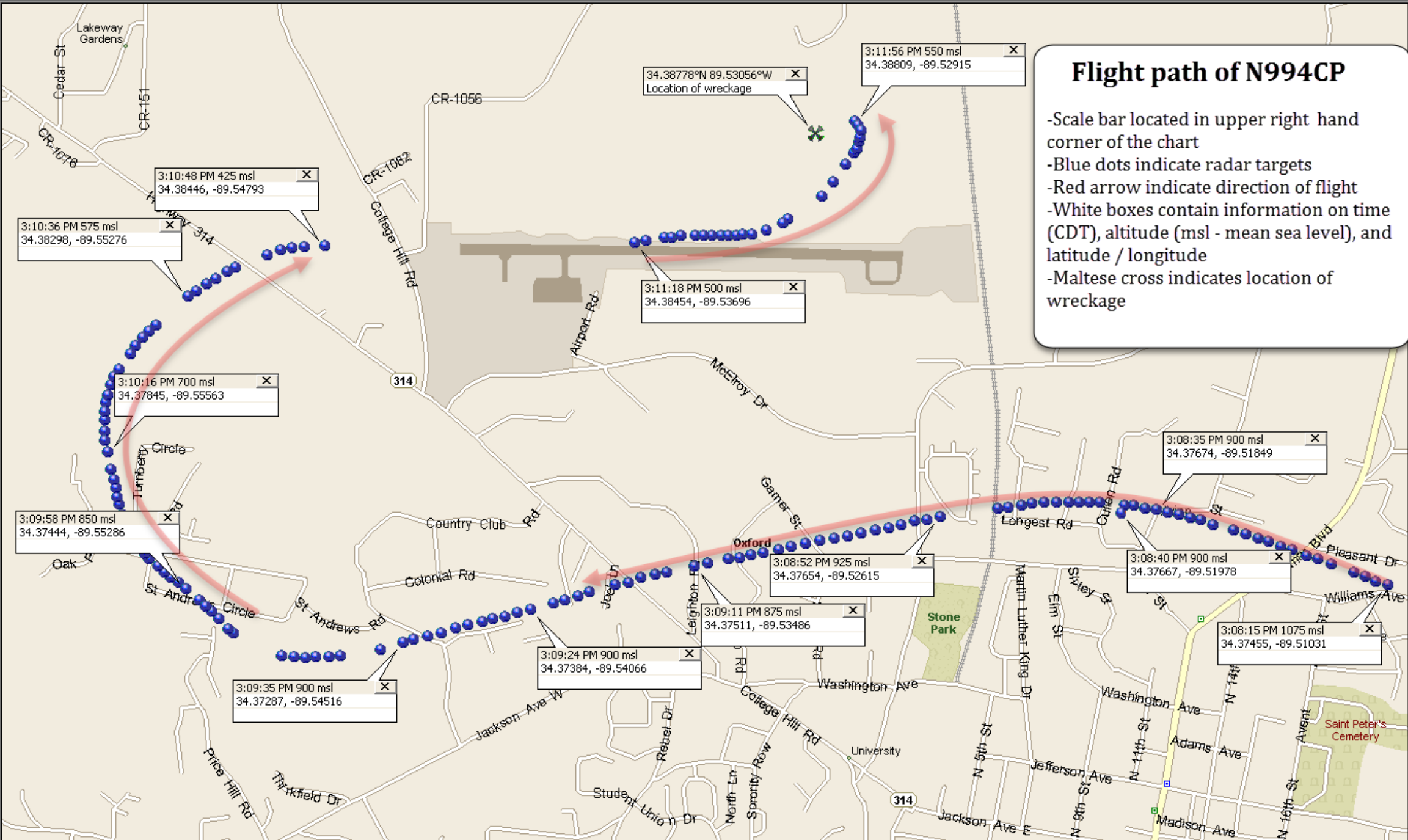
Flight path of N994CP

- Scale bar located in upper right hand corner of the chart
- Blue dots indicate radar targets
- Red arrow indicate direction of flight
- White boxes contain information on time (CDT), altitude (msl - mean sea level), and latitude / longitude
- Maltese cross indicates location of wreckage



Flight path of N994CP

- Scale bar located in upper right hand corner of the chart
- Blue dots indicate radar targets
- Red arrow indicate direction of flight
- White boxes contain information on time (CDT), altitude (msl - mean sea level), and latitude / longitude
- Maltese cross indicates location of wreckage



Flight path of N994CP

- Scale bar located in upper right hand corner of the chart
- Blue dots indicate radar targets
- Red arrow indicate direction of flight
- White boxes contain information on time (CDT), altitude (msl - mean sea level), and latitude / longitude
- Maltese cross indicates location of wreckage

34.38778°N 89.53056°W
Location of wreckage



3:11:56 PM 550 msl
34.38809, -89.52915

3:11:55 PM 575 msl
34.38798, -89.52905

3:11:53 PM 575 msl
34.38762, -89.52898

3:11:54 PM 600 msl
34.38781, -89.52896

3:11:51 PM 575 msl
34.38729, -89.52911

3:11:52 PM 575 msl
34.38749, -89.52902

3:11:50 PM 550 msl
34.38717, -89.5292

3:11:48 PM 475 msl
34.38684, -89.52948

3:11:45 PM 500 msl
34.38633, -89.52995

3:11:43 PM 500 msl
34.3859, -89.53033

Flight path of N994CP

- Scale bar located in upper right hand corner of the chart
- Blue dots indicate radar targets
- Red arrow indicate direction of flight
- White boxes contain information on time (CDT), altitude (msl - mean sea level), and latitude / longitude
- Maltese cross indicates location of wreckage