

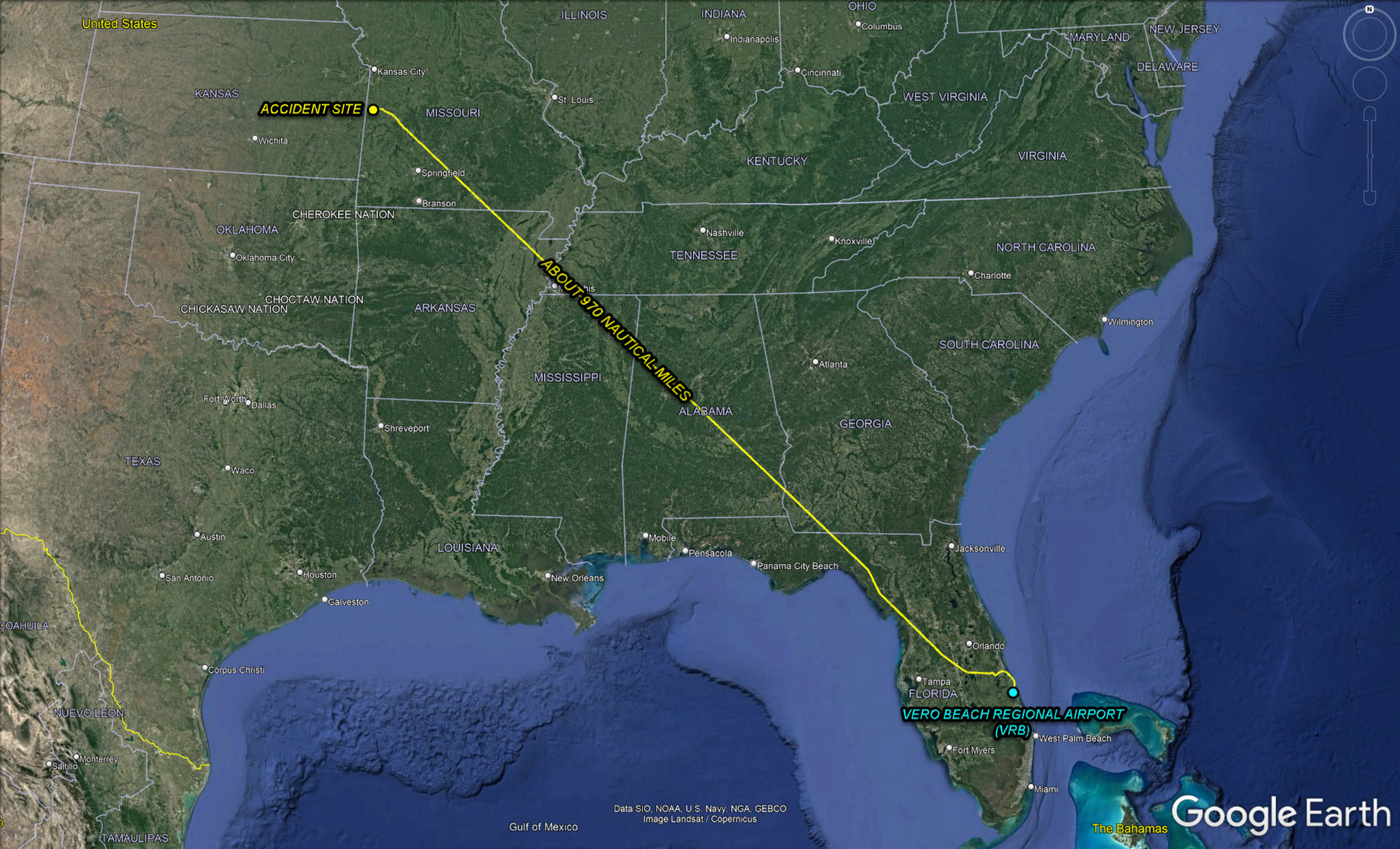
**Specialist's Factual Report – Attachment 3**

**Flight Track Graphics**

**AIR TRAFFIC CONTROL**

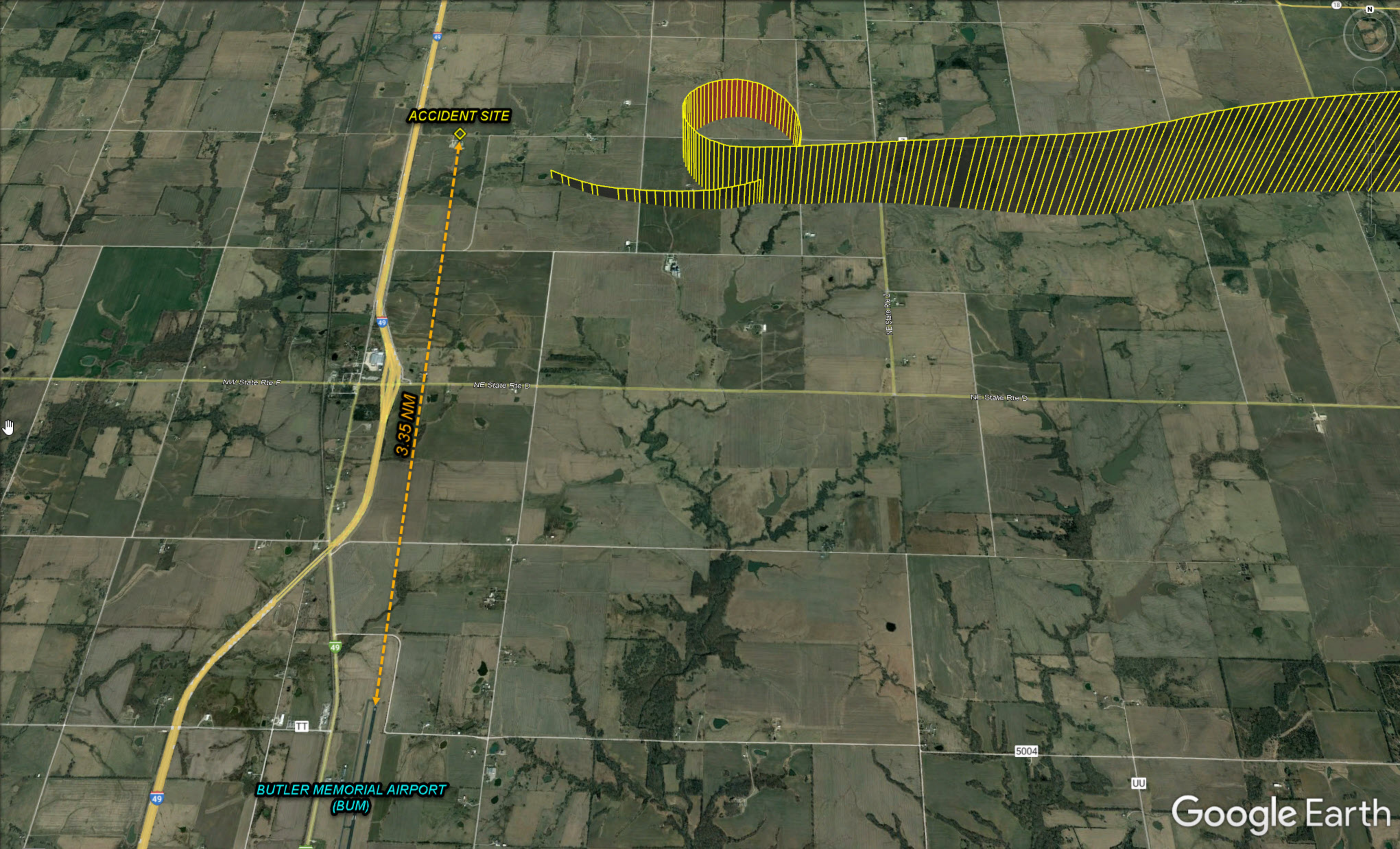
CEN19FA161





Data SIO, NOAA, U.S. Navy, NGA, GEBCO  
Image Landsat / Copernicus





ACCIDENT SITE

3.35 NM

NW State Rte F

NE State Rte D

NE State Rte 2

NE State Rte D

BUTLER MEMORIAL AIRPORT  
(BUM)

5004

Google Earth



- 1 1009 CDT - PILOT REPORTED HE WOULD HAVE TO SHUT ENGINE DOWN AT FULL POWER
- 2 1012 CDT - PILOT REPORTED HE WAS FLYING ON ONE ENGINE
- 3 1014 CDT - PILOT REQUESTED NEAREST AIRPORT AND WAS PROVIDED BUTLER MEMORIAL AIRPORT (BUM)
- 4 1016 CDT - PILOT ADVISED HE WOULD NEED TO LAND RUNWAY 18 AND REPORTED AIRPORT IN SIGHT
- 5 1018 CDT - PILOT ADVISED HE WAS TRYING TO GET AIRPLANE UNDER CONTROL AND WAS CLEARED VISUAL APPROACH
- 6 1019 CDT - PILOT ADVISED THE AIRCRAFT WAS GOING DOWN



NOTE: ALTITUDES ROUNDED TO NEAREST 100 FEET AS DISPLAYED TO ATC