



Survival Factors Photographs

Bryce Canyon City, Utah

HWY19MH012

(9 Pages)



Photo 1 – Front left angle view of deformation to 2017 Freightliner, Embassy bus body.



Photo 2 – Rear left angle view of deformation to roof of 2017 Freightliner, Embassy bus body.



Photo 3 – View looking from front to rear showing roof shift and integrity loss.



Photo 4 – View looking from rear to front showing roof shift and integrity loss.



Photo 5 – Front right-angle view of deformation and roof shift to 2017 Freightliner, Embassy bus body.



Photo 6 – Rear right angle view of deformation and roof shift to 2017 Freightliner, Embassy bus body.



Photo 7 – Interior view looking at undamaged driver seating area. Note: Missing roof structure.

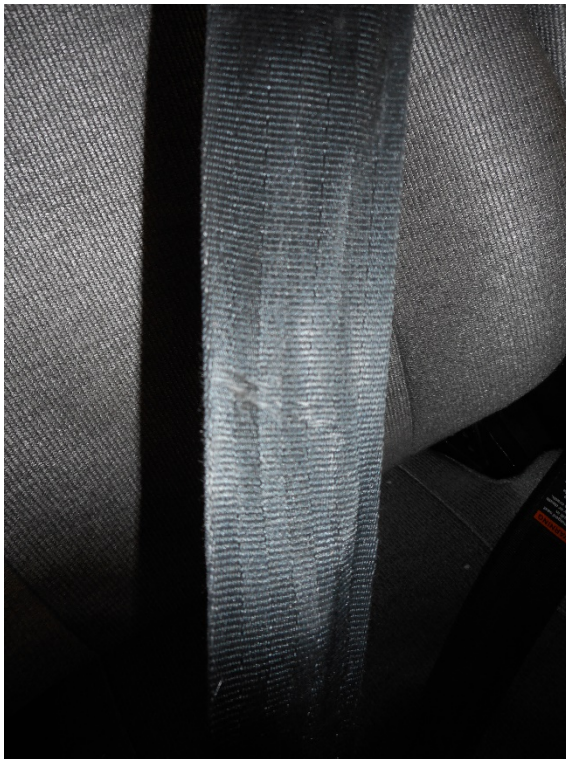


Photo 8 – View of loading evidence on bus driver's shoulder belt webbing.



Photo 9 – Interior view of roof collapse looking from front to rear.



Photo 10 – View of sidewall intrusion to right side row 4.



Photo 11 – View of roof collapse on top of Row 7 left side seatbacks.



Photo 12 – View of roof collapsed on top of Row 3 left side seatbacks.



Figure 13. Close-up view of loading evidence to 7B lap belt webbing.



Figure 14. Close-up of 7B lap belt buckle showing evidence of roadway contact to top of plastic housing and latch plate cover broken off.



Figure 15. View inside lap belt buckle 7A prior to removal of interior components.



Figure 16. View of undamaged lap belt components removed and examined.