



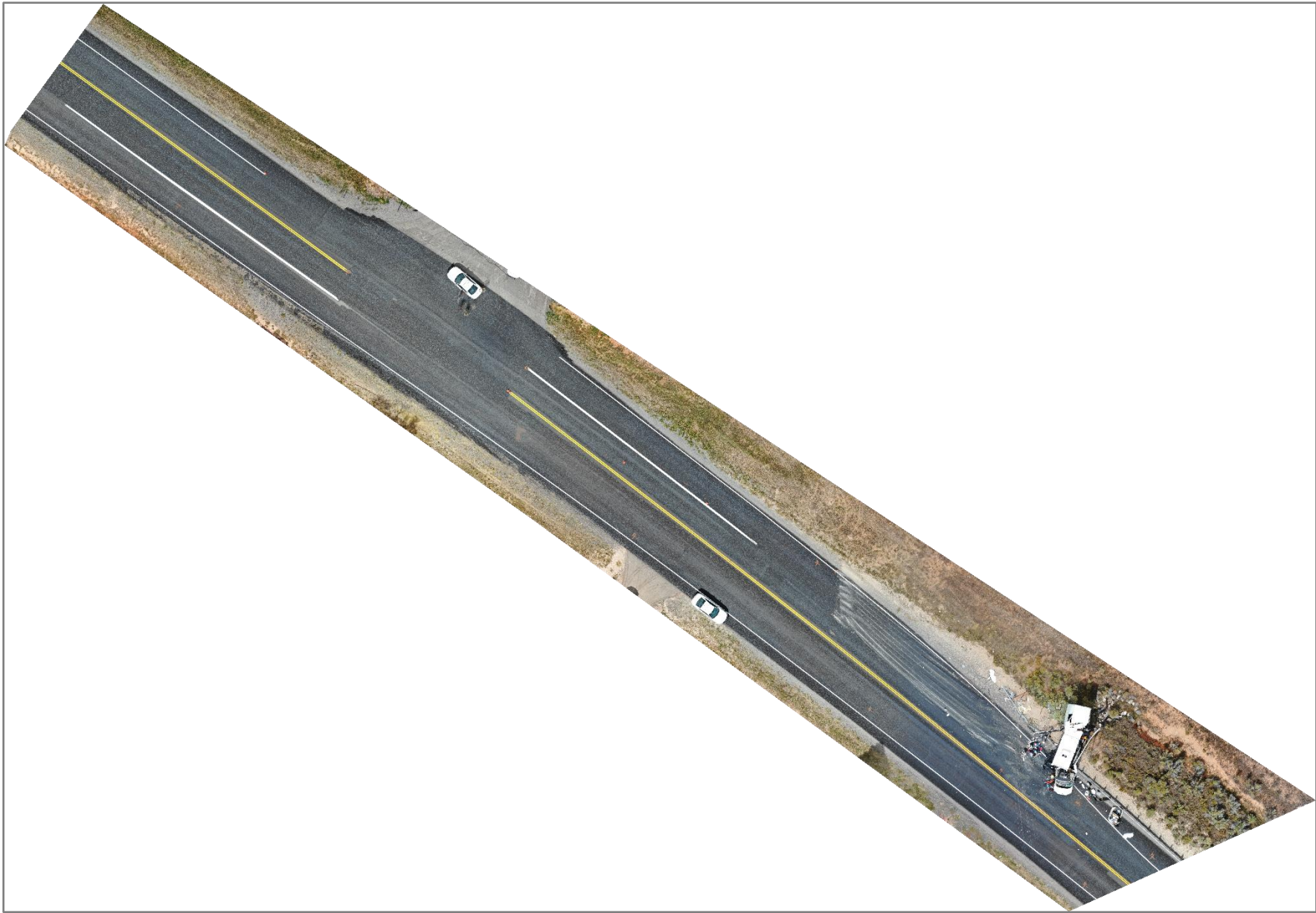
HIGHWAY FACTORS GROUP

Photographs

Bryce Canyon City, Utah

HWY19MH012

(8 photographs)



Highway Photograph 1 – Orthomosaic Aerial Image of Crash Scene from sUAS (source: Utah Highway Patrol)



Highway Photograph 2 – SR-12 Eastbound Travel Lane Prior to Crash Location – Facing East



Highway Photograph 3 – SR-12 Eastbound Travel and Dedicated Left Turn Lanes Near Crash Location – Facing East



Highway Photograph 4 – Eastbound Clear Zone Along South Side of SR-12 in the Area of the Collision – Facing East



Highway Photograph 5 – Eastbound Pavement Edge Drop-off in Area of Collision – Facing East-Southeast

(The edge drop-off is indicated between the sets of yellow arrows.)



Highway Photograph 6 – Repaired and Re-graded Eastbound Shoulder in Area of Collision – Facing East-Southeast
(source: Utah Department of Transportation)



Highway Photograph 7 – West End of Guardrail and End Terminal Showing Collision Damage



Highway Photograph 8 – Collision Damage to West End of Blocked-Out Strong-Post W-Beam Guardrail