

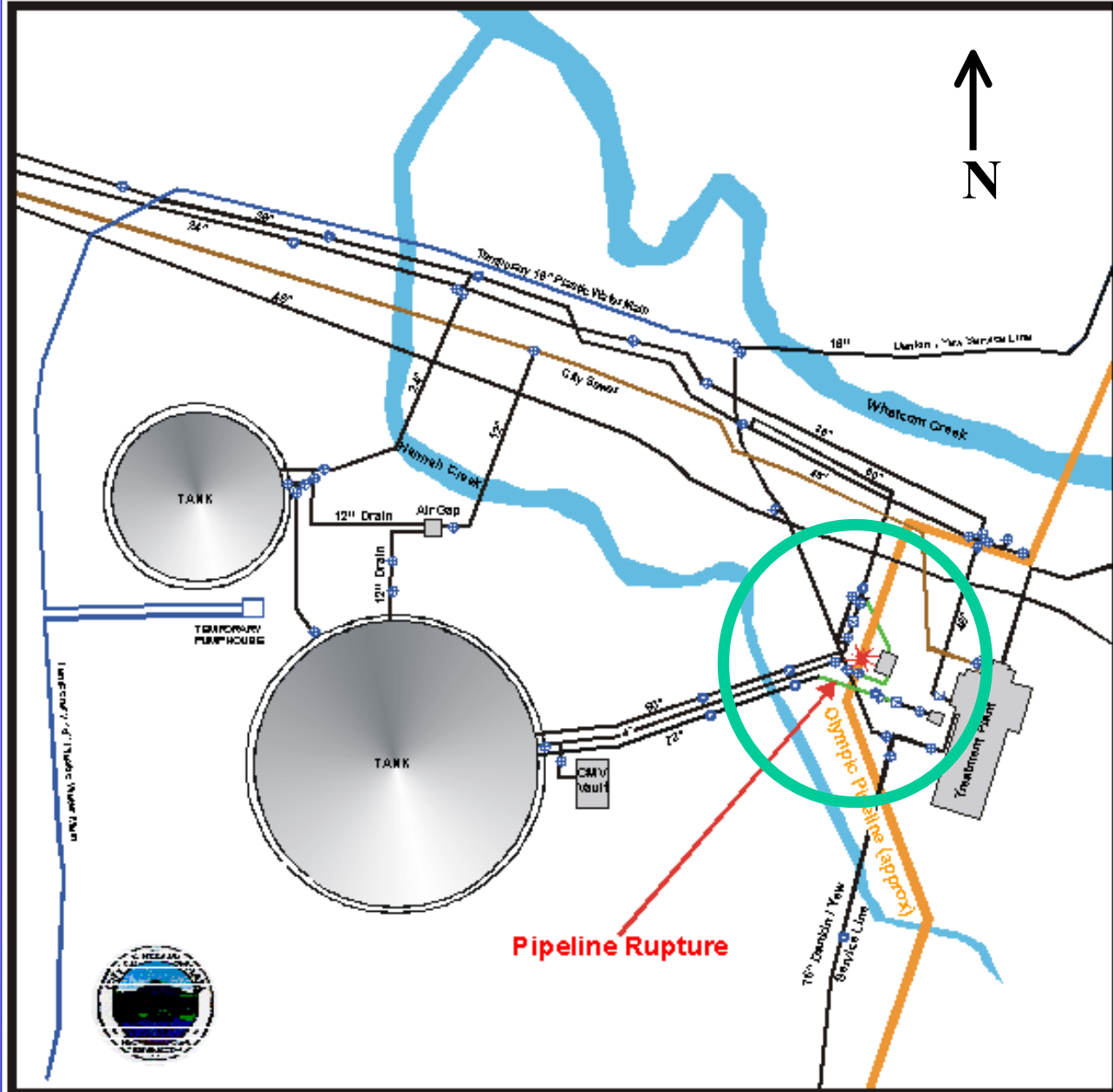


National Transportation Safety Board

**IMCO's excavations in the
vicinity of Olympic's pipeline.**



National Transportation Safety Board



WATER TREATMENT PLANT WATER DISTRIBUTION



Design Phase Activities

- **Locate Pipeline for Planning**
- **Obtain Olympic's Requirements**
- **“Pothole” Pipeline**



**It is unlikely that the extensive damage
to the pipeline occurred as a
result of the potholing.**



IMCO's Excavation Activities

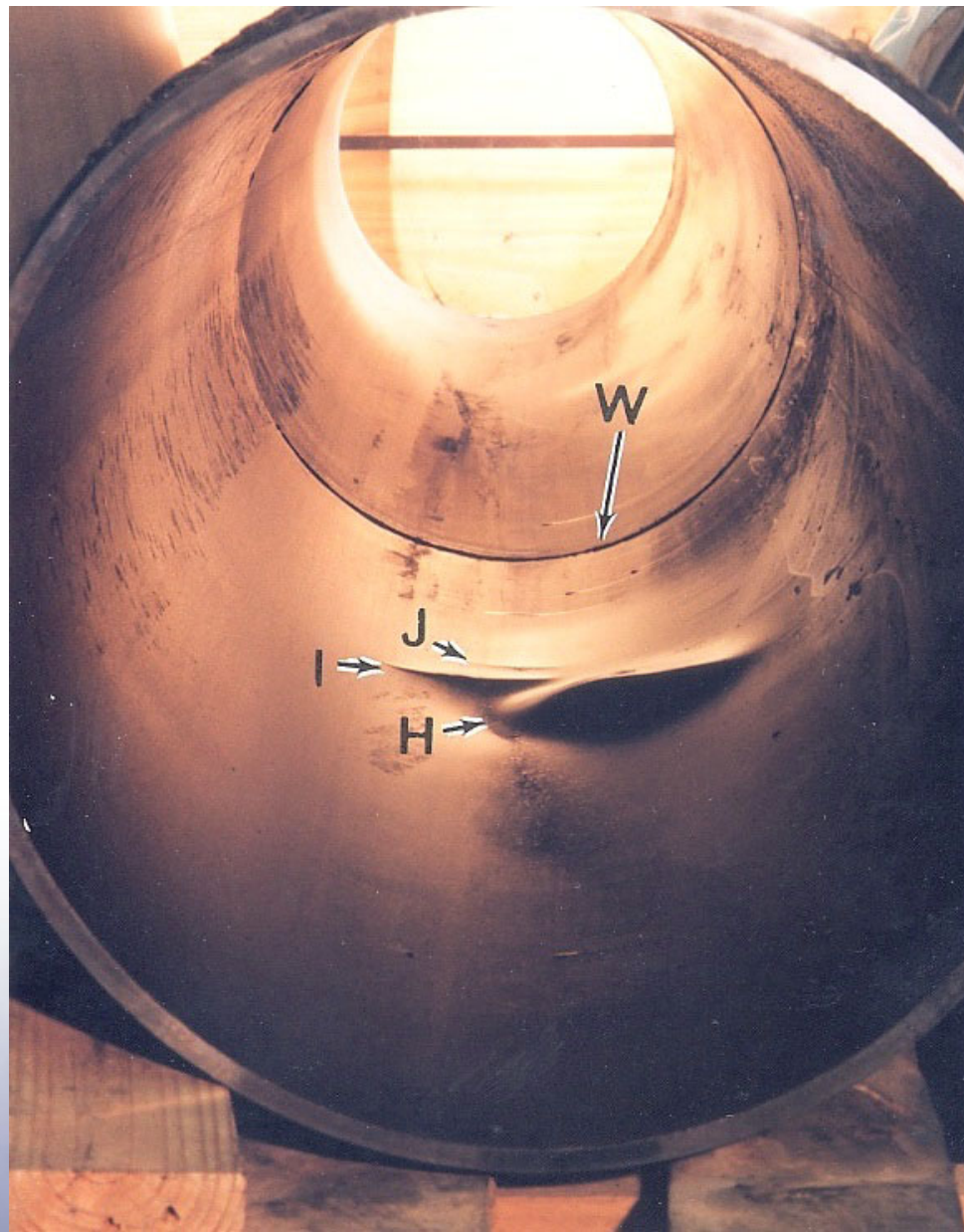


National Transportation Safety Board

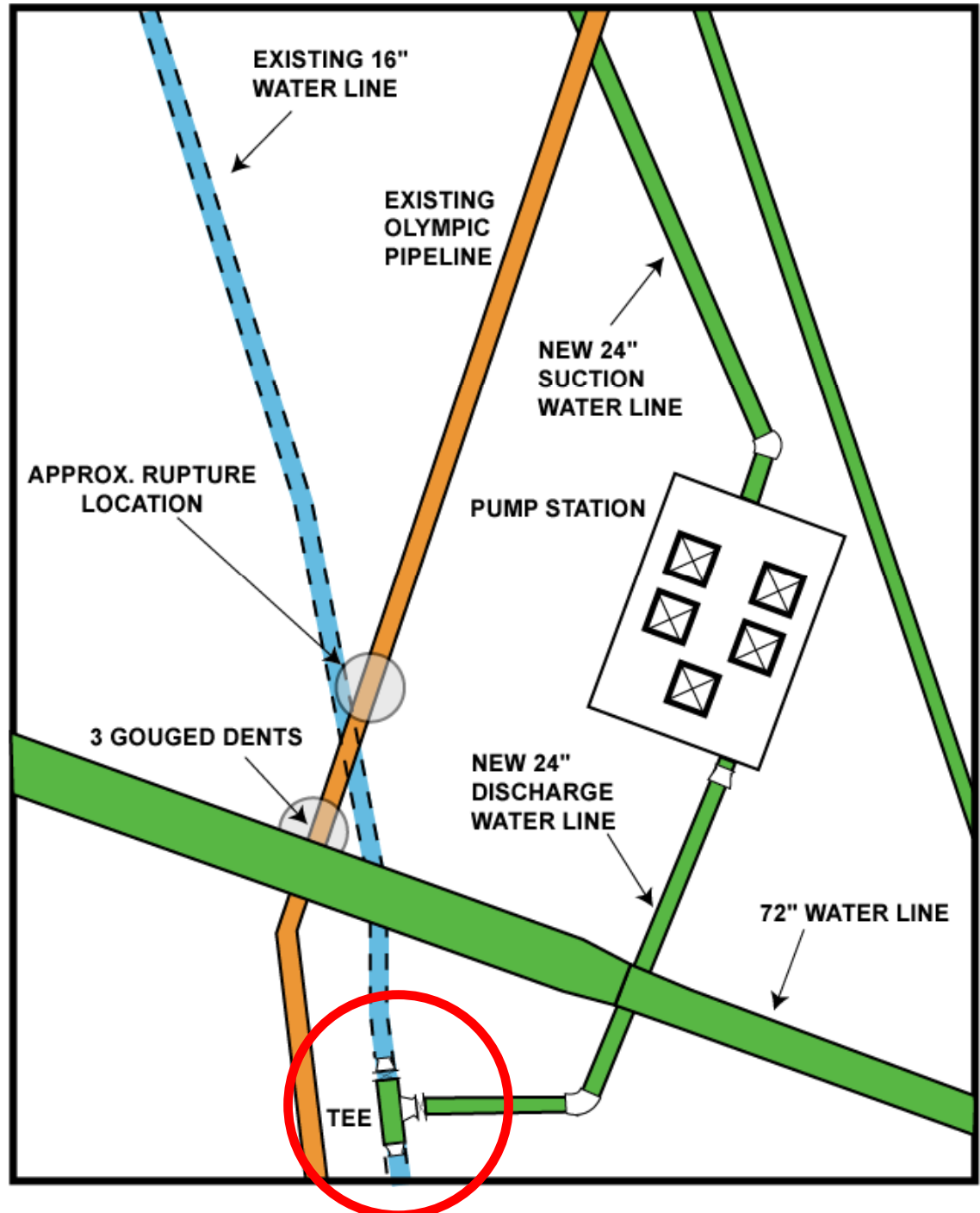
**Olympic
Pipeline
Exposed
During
Water Line
Installation**



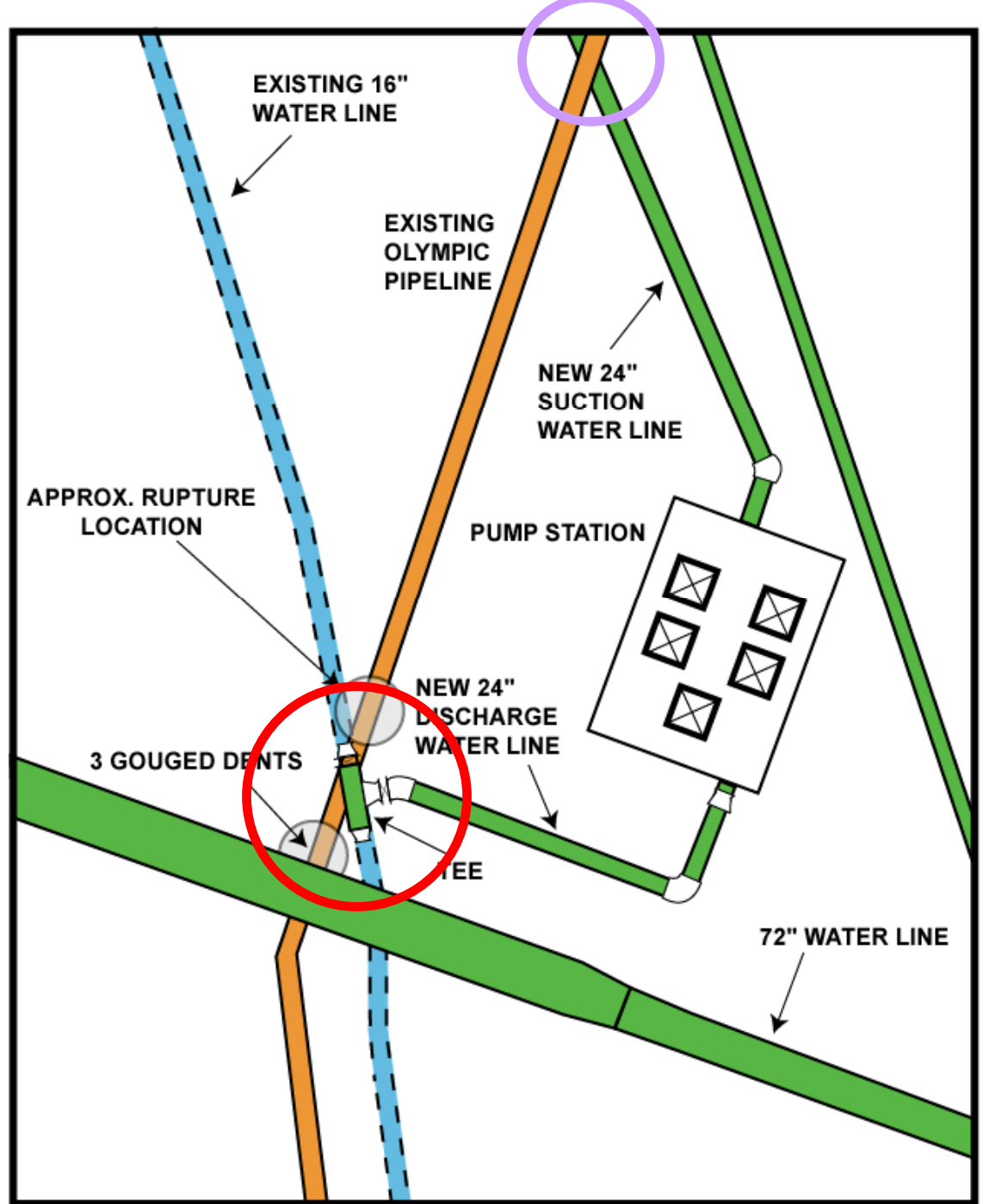
**Gouged Dents
Found Near
Water Line
Crossing**



Original Design



Modified Design



Newly-Installed

Discharge

Water Line

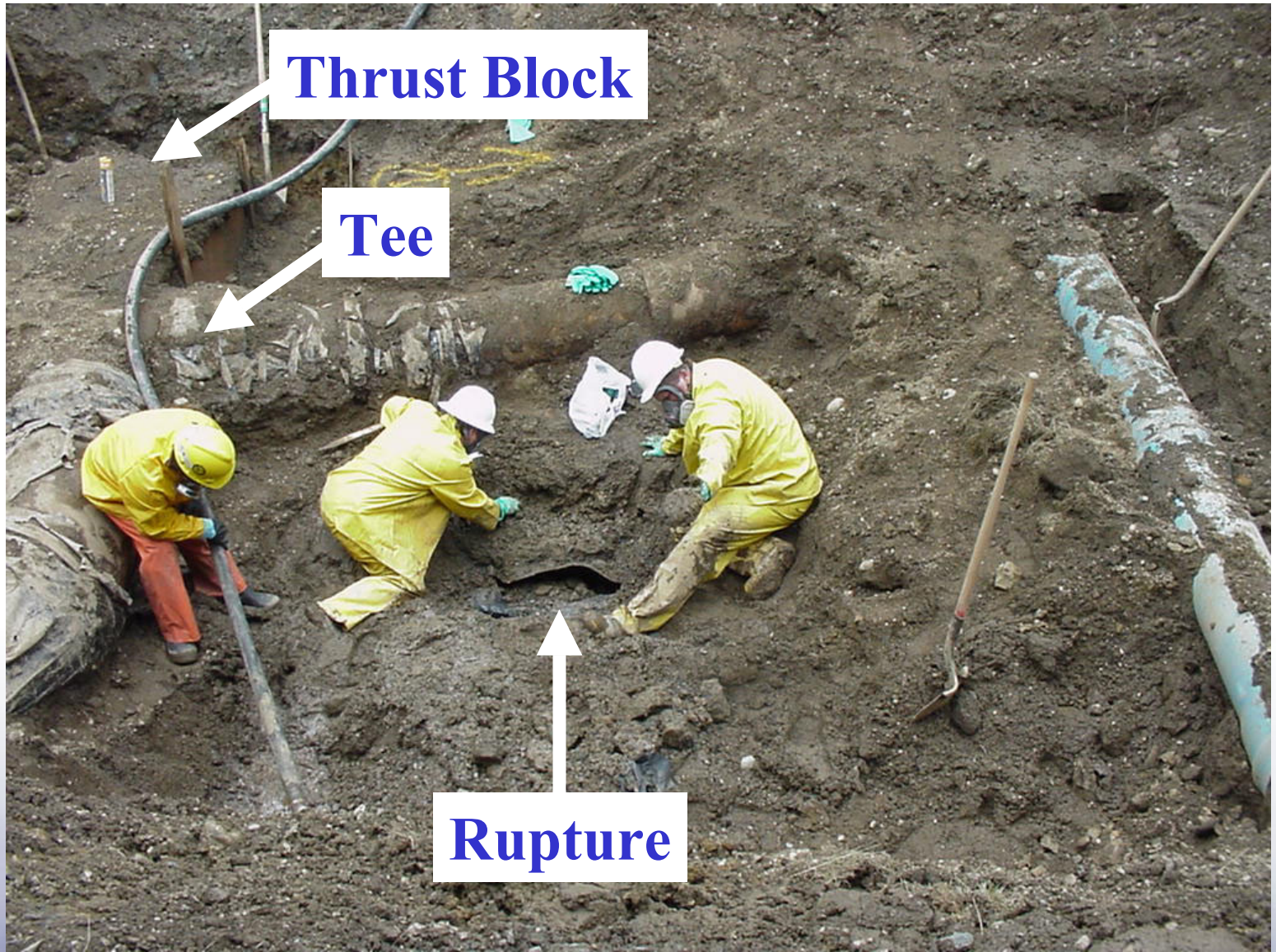
New Discharge Line

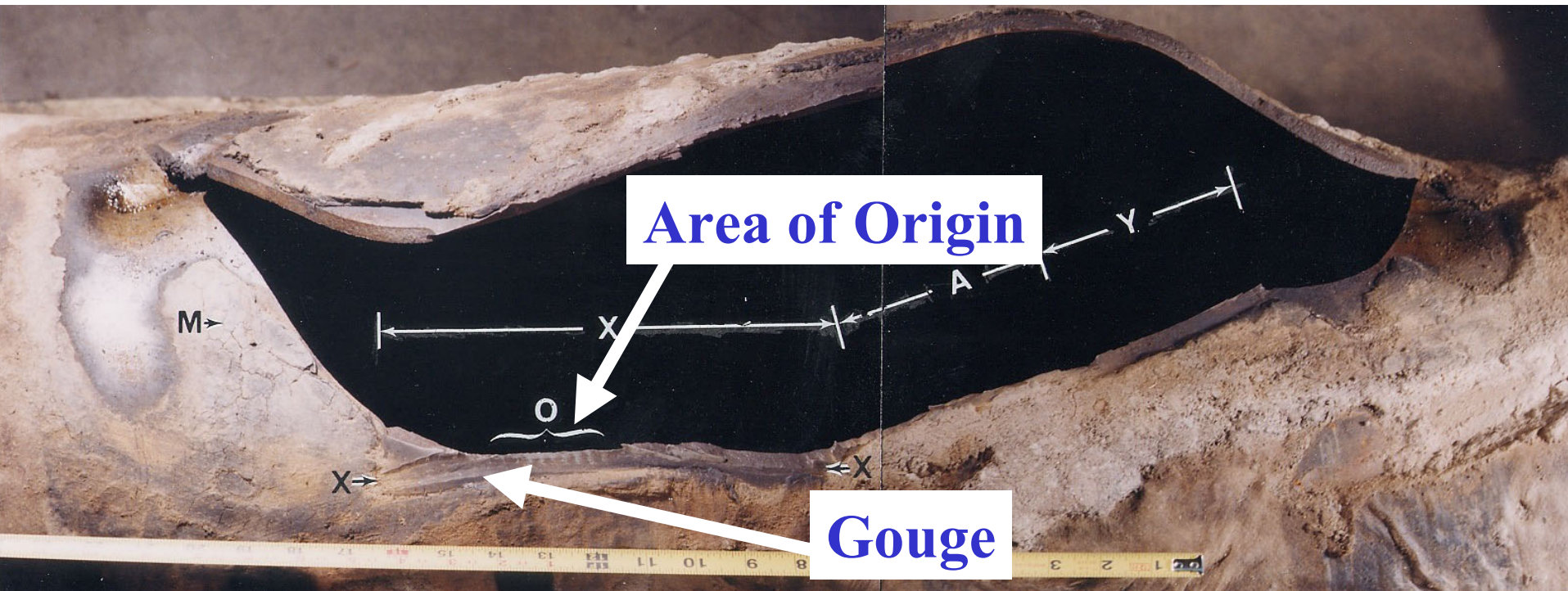


Tee



National Transportation Safety Board



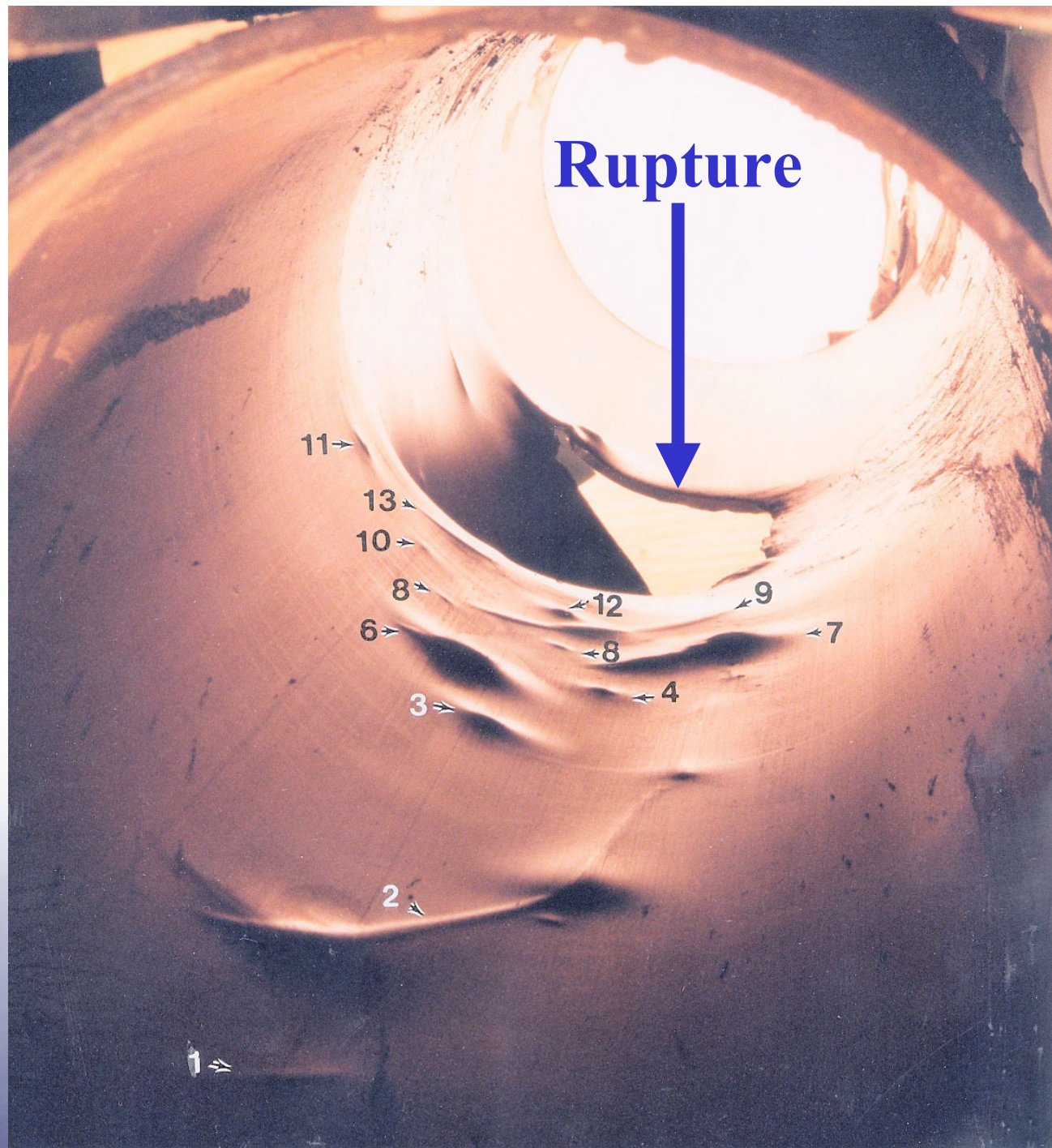


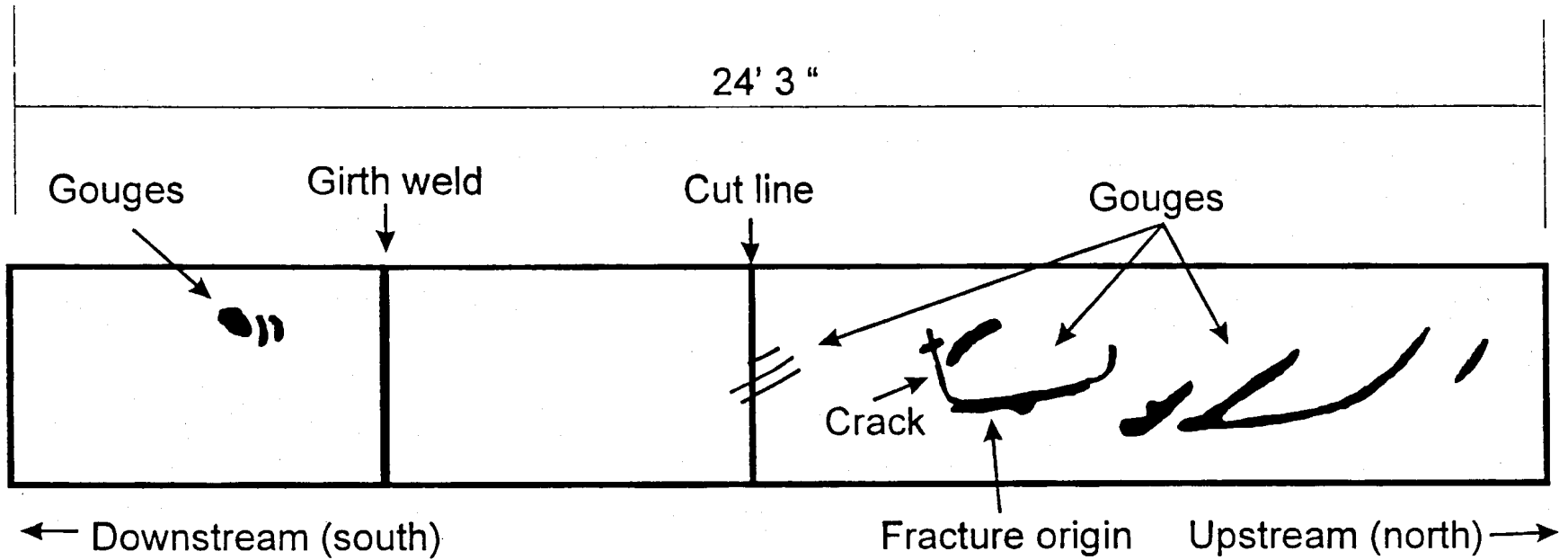
External Gouges on Ruptured Pipeline



National Transportation Safety Board

**Damage
Shown on
Internal
Surface**





Extent of Damage to Pipe



IMCO's Excavation Activities

- **Mechanized Equipment**
- **No Anomalies in 1991**
- **Water Treatment Plant Project in 1993 and 1994**
- **Anomalies Detected in 1996 and 1997**



**Damage to the Olympic pipeline
probably occurred during IMCO
excavations associated with the water
treatment modification project.**



Newly-Installed

Discharge

Water Line



National Transportation Safety Board

Olympic's Inspections

- **Olympic Not Notified of Excavations**
- **Barrett Should Have Notified Olympic of Design Change**
- **IMCO Responsible for Notification**
- **Olympic Didn't Investigate Open Excavation or Check As-built Drawings**



**Olympic inadequately inspected
the excavation work.**



National Transportation Safety Board



National Transportation Safety Board