



National Transportation Safety Board

Bellingham, Washington

June 10, 1999

**Pipeline Rupture and Subsequent Fire
In Bellingham, Washington**



National Transportation Safety Board

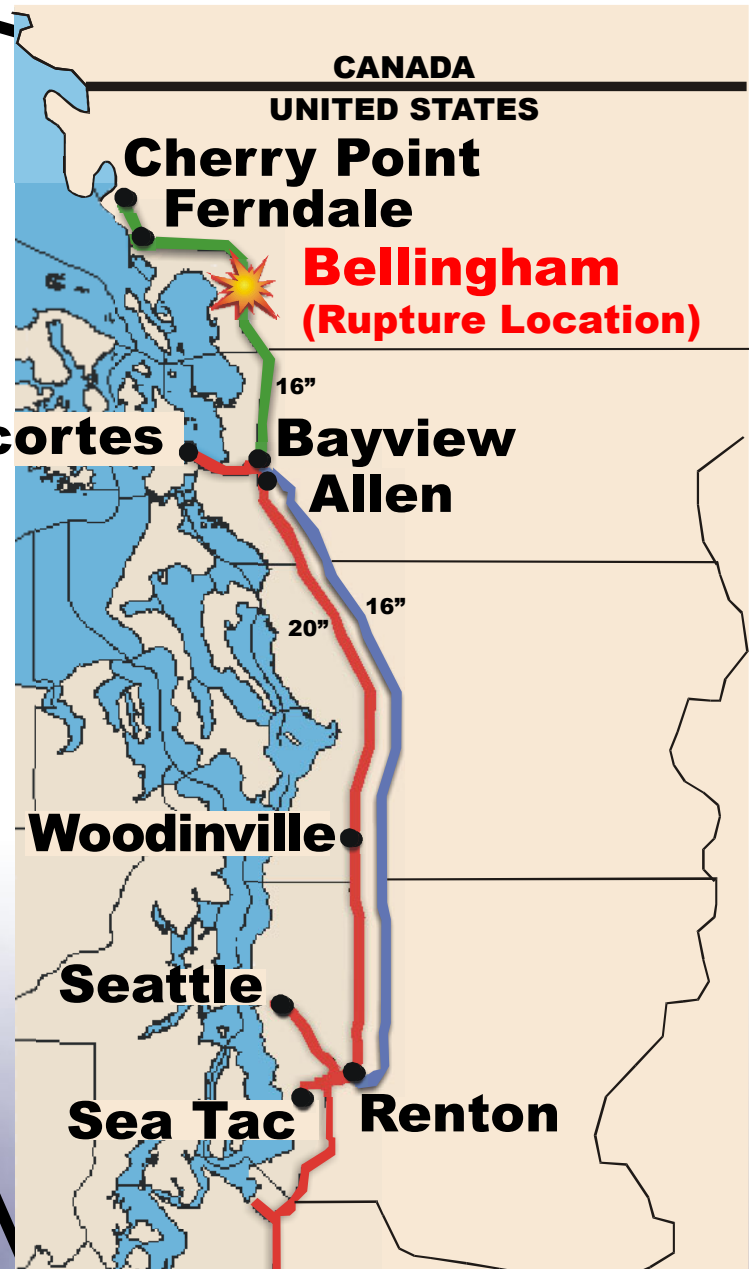
Bellingham, WA

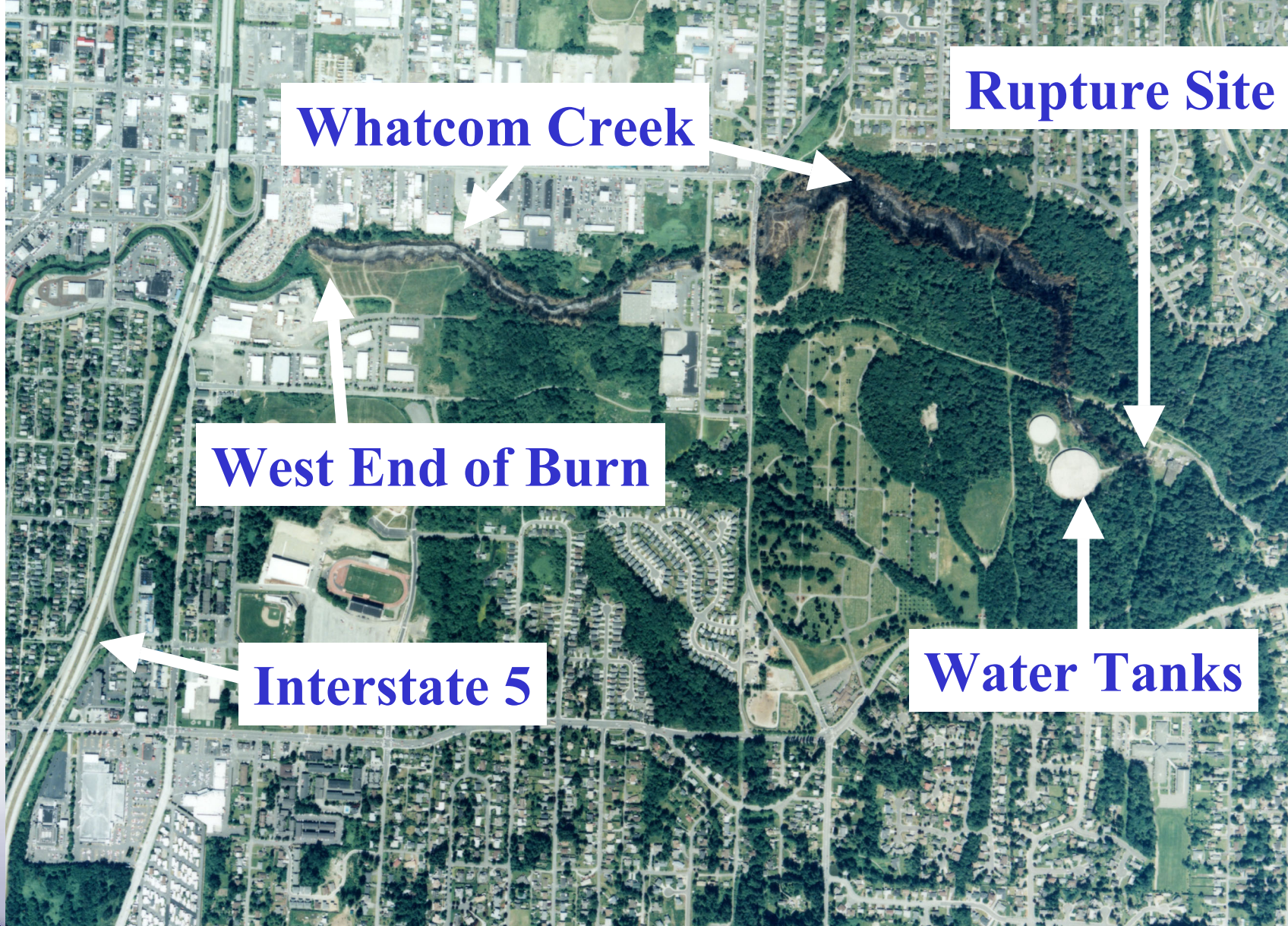


National Transportation Safety Board

Bellingham, WA







Whatcom Creek

Rupture Site

West End of Burn

Interstate 5

Water Tanks

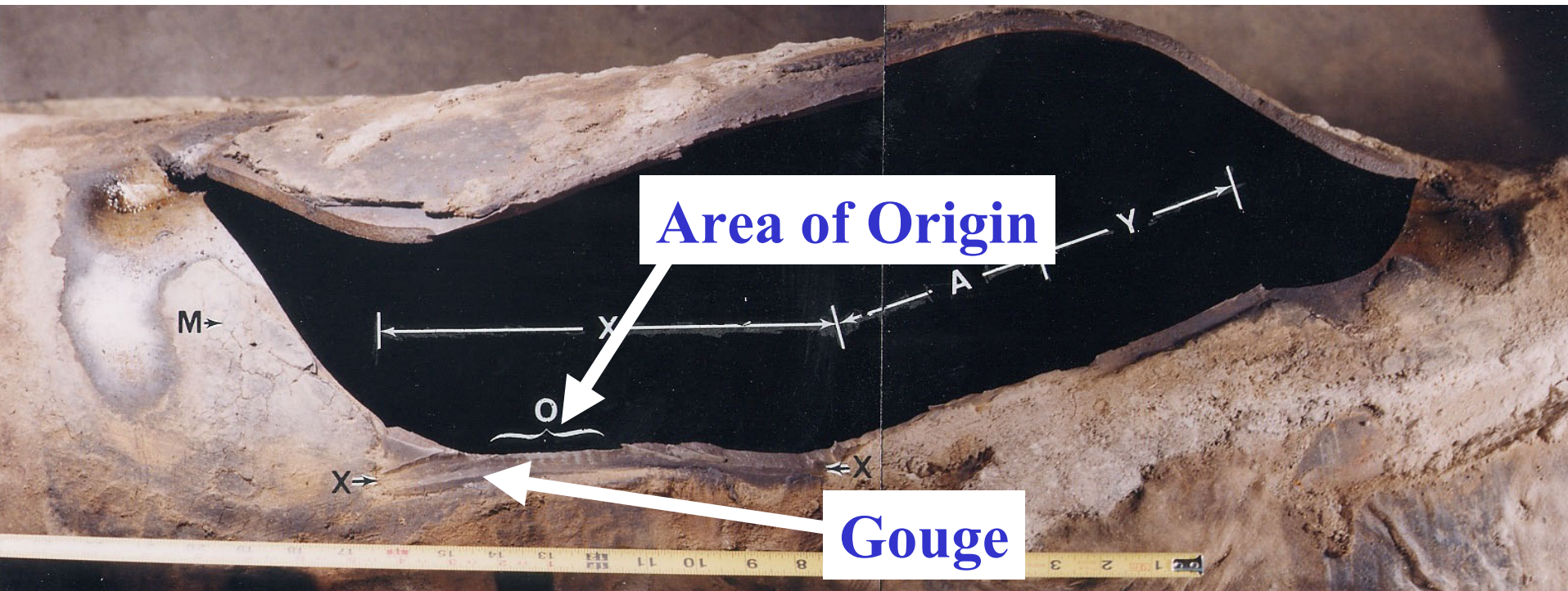
Aerial View from WDOE

National Transportation Safety Board



Burned Area Along Whatcom Creek

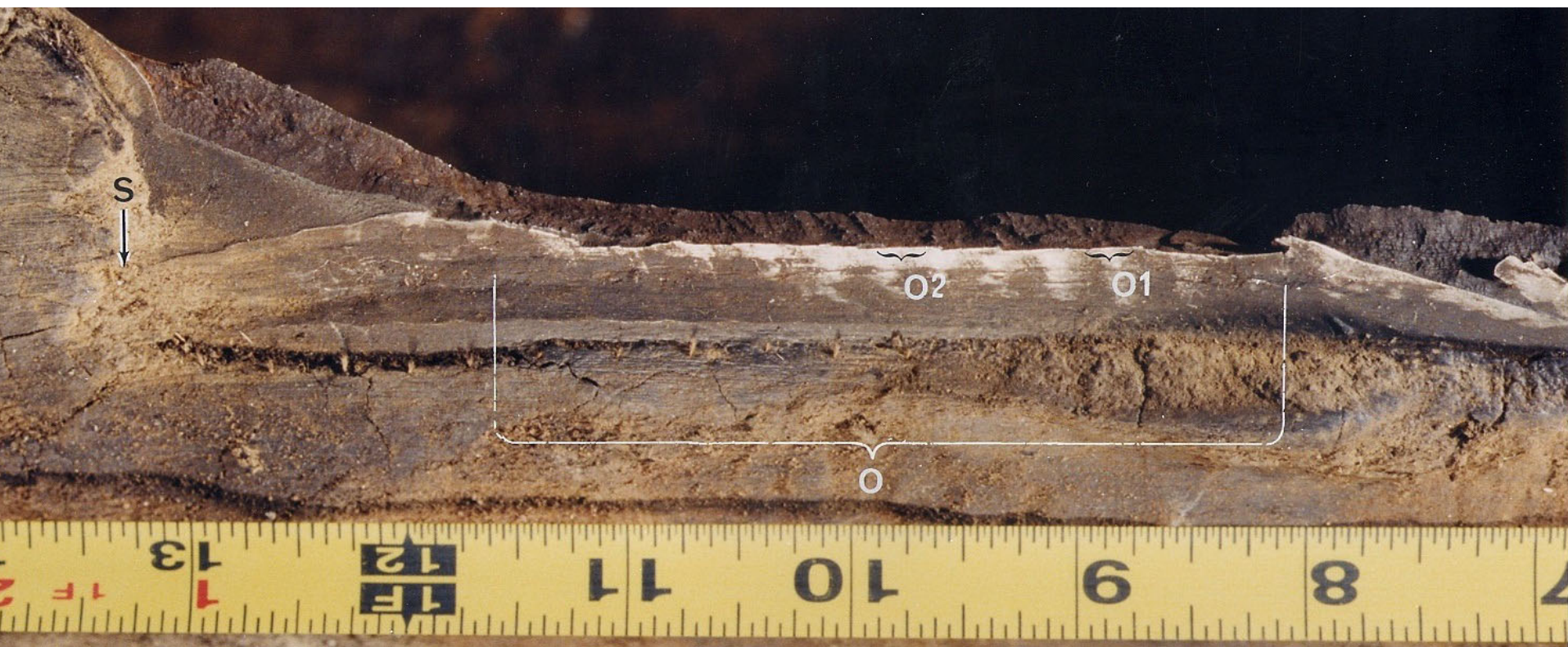




External Gouges on Ruptured Pipeline



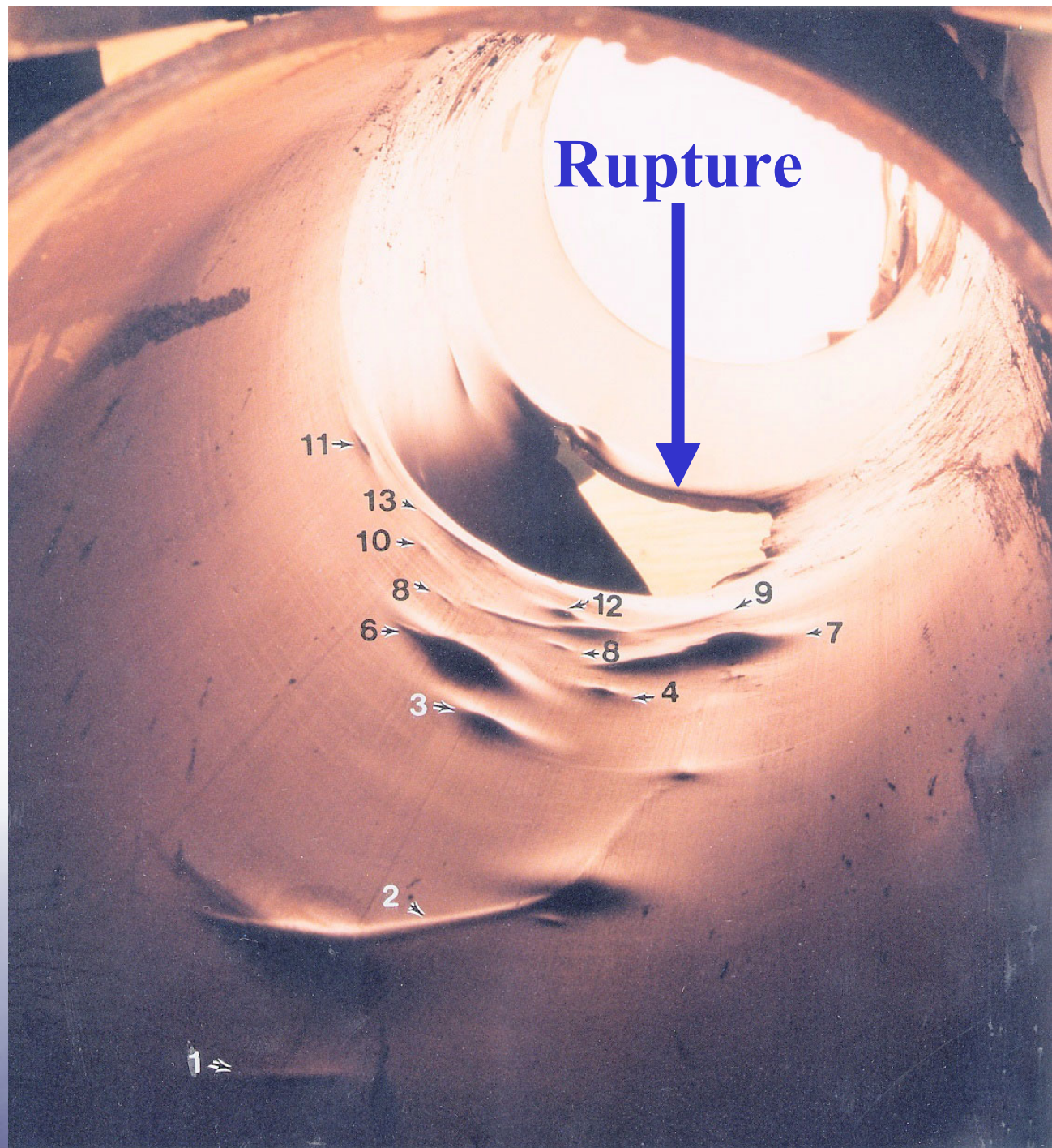
National Transportation Safety Board



Close-up View of Gouge at Origin



**Damage
Shown on
Internal
Surface**





Bayview Products Terminal



National Transportation Safety Board

**IMCO's excavations in the vicinity
of Olympic's pipeline.**



Olympic's evaluation of the results of in-line inspection data.



**Olympic's management
of the construction and commissioning
of the Bayview Products Terminal.**



The performance and security of Olympic's SCADA system.



Federal regulations regarding the testing of relief valves.



Parties to the Investigation:

RSPA's Office of Pipeline Safety

Olympic Pipe Line Company

IMCO General Construction, Inc.

Fisher-Rosemount Petroleum

Earth Tech

City of Bellingham

Washington State Department of Ecology

Washington State Fire Marshal

US Environmental Protection Agency



Investigation Team:

John Hammerschmidt - Member

Allan Beshore – Investigator-in-Charge

Cliff Zimmerman – In-Line Inspections

Leslee Shumway – SCADA

Jim Cash – SCADA

Frank Zakar – Metallurgy

Bob Trainor – Relief Valve

Jim Gildea – Survival Factors

Joe Kris – Survival Factors

Dr. Steve Jenner – Human Performance

Tom Lasseigne – Environmental Response

Robert Moore – Report Writer and Editor

Keith Holloway – Public Affairs





National Transportation Safety Board