

National Transportation Safety Board

Office of Highway Safety

Washington, DC 20594



HWY22FH001

ERRATA - HIGHWAY FACTUAL

Group Chair's Factual Report - Supplemental

April 13, 2023

A. ACCIDENT

Location: Big Spring, TX
Date: November 19, 2021
Time: 4:01 p.m. CST

Vehicle 1: 2016 Ford F-350 Pick Up Truck. Private Owner
Vehicle 2: 2005 MCI Motorcoach. Andrews Independent School District
Vehicle 3: 2018 Freightliner Bus. Andrews Independent School District

B. ERRATA - HIGHWAY FACTUAL GROUP

Group Chairman David Rayburn
National Transportation Safety Board
Washington, D.C.

C. ERRATA

This report corrects an error found in Figure 2 on page 4 of the Highway Group Chairman Factual report. The original figure has a rectangle inset showing that the location of the DO NOT ENTER signs was at the intersection of Birdwell Lane and 3rd Street. The new figure below has a rectangle inset showing the correct location at Tulane Avenue and 3rd Street.

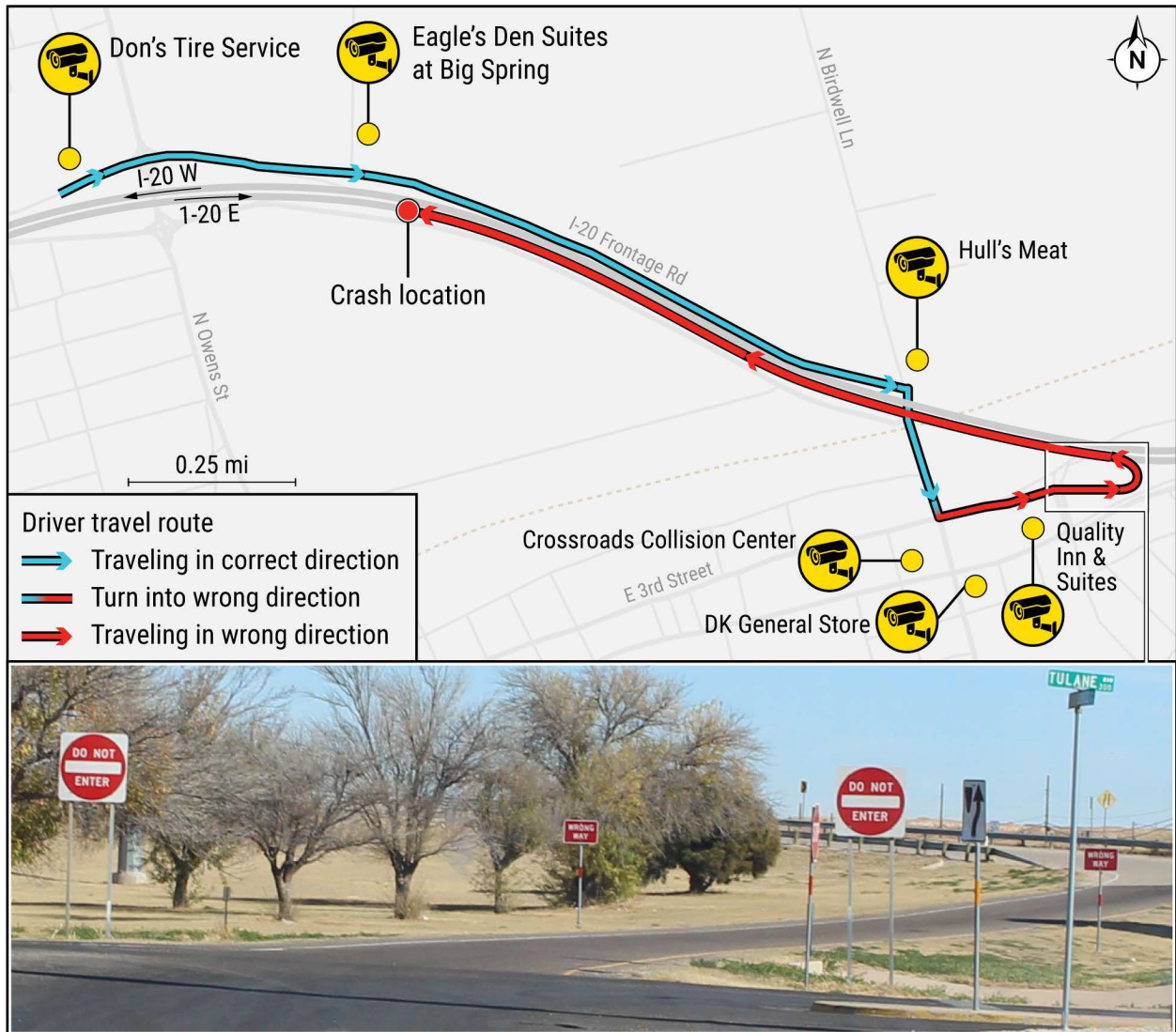


Figure 2. The top half of this figure shows an annotated Google image of the Ford pickup driver's route, and the bottom half shows the signage where the Ford pickup driver entered the exit ramp. The yellow circles in the Google image indicate where security cameras recorded the Ford pickup. The blue line indicates where he was traveling in the correct direction, and the red line shows where he was traveling in the wrong direction.

Submitted by:

David S. Rayburn
 Highway Factors Group Chairman