



Figure 1: Aircraft submerged in river



Figure 2: Aerial view of the airplane submerged in river



Figure 3: Left main landing gear sticking out of the water



Figure 4: Aircraft partially submerged in river



Figure 5: Side view of aircraft partially submerged in river

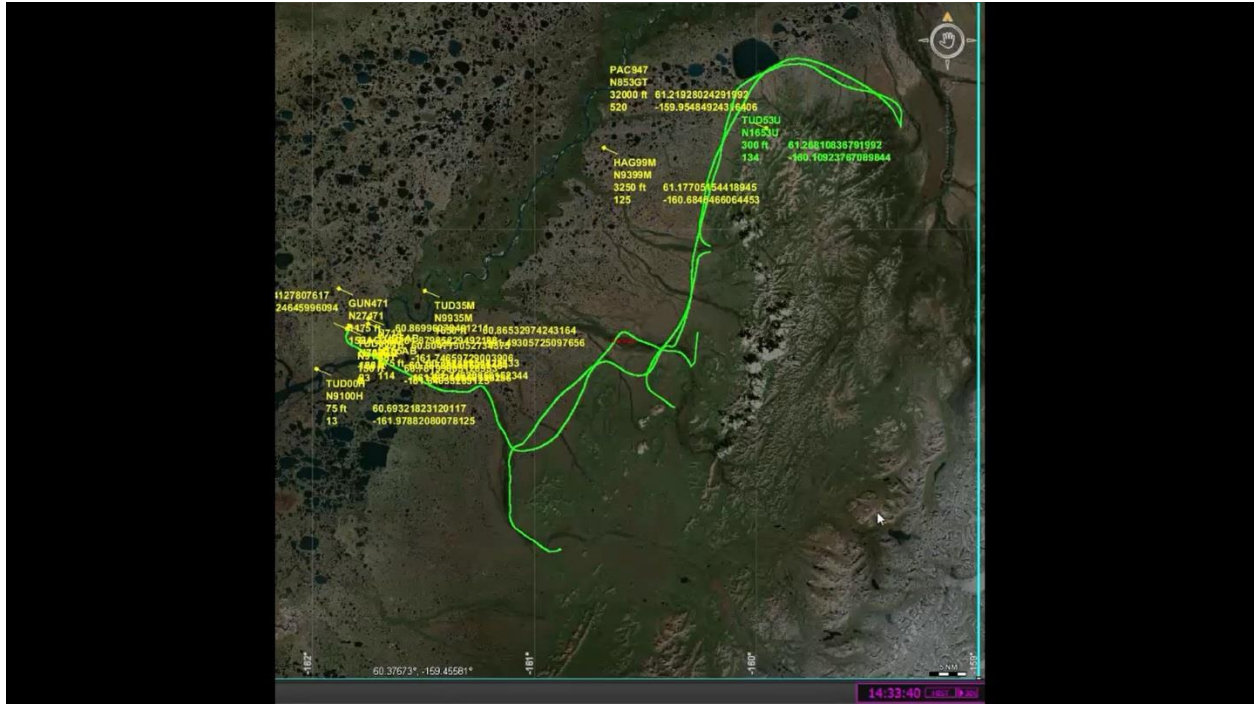


Figure 6: ADS-B flight track



Figure 7: Right side exhaust stack



Figure 8: Right side exhaust muffler and heat shroud



Figure 9: Right side exhaust muffler top view



Figure 10: Bottom view of engine on stand