



NATIONAL TRANSPORTATION SAFETY BOARD

Office of Aviation Safety
Washington, D.C. 20594

March 26, 2020

Attachment 5 – STL LIDO Charts [Excerpts]

OPERATIONAL FACTORS

DCA16LA100

3-10

D-ATIS	125.025 ASOS	
TWR	120.050 N	118.500 s
	132.475 W	
UNICOM	122.950	
GND	121.900 Inbound	121.650 Outbound
	127.550 E, Metering	118.925 W
	121.075 W, Metering	
RCO	122.600	122.450
DLV	119.500	
PDC		

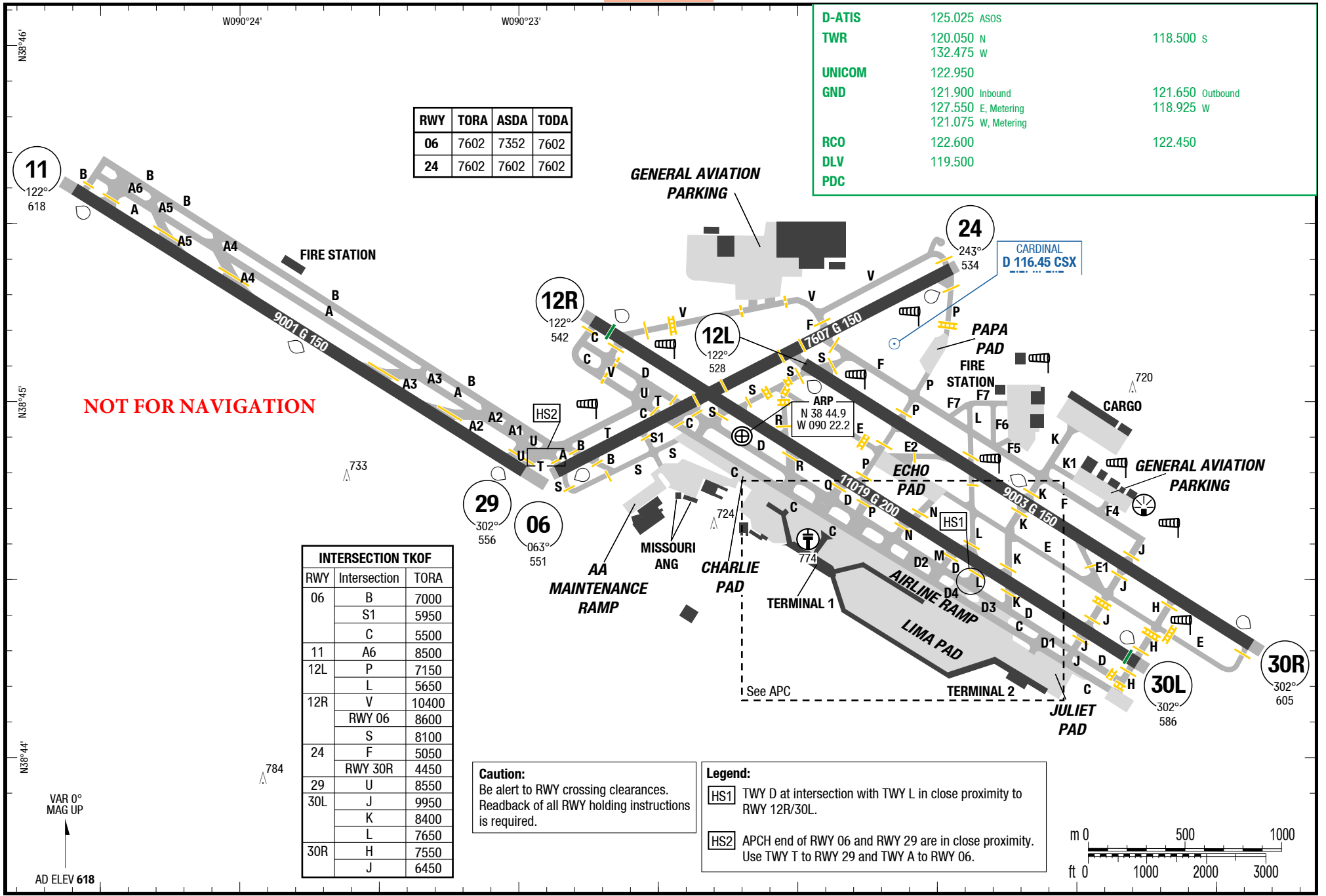
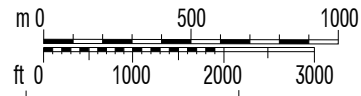
RWY	TORA	ASDA	TODA
06	7602	7352	7602
24	7602	7602	7602

NOT FOR NAVIGATION

INTERSECTION TKOF		
RWY	Intersection	TORA
06	B	7000
	S1	5950
	C	5500
11	A6	8500
	P	7150
12L	L	5650
	V	10400
	RWY 06	8600
24	F	5050
	RWY 30R	4450
	U	8550
30L	J	9950
	K	8400
	L	7650
30R	H	7550
	J	6450

Caution:
Be alert to RWY crossing clearances.
Readback of all RWY holding instructions is required.

Legend:
HS1 TWY D at intersection with TWY L in close proximity to RWY 12R/30L.
HS2 APCH end of RWY 06 and RWY 29 are in close proximity. Use TWY T to RWY 29 and TWY A to RWY 06.



Changes: WIP, TWY E, Jet arresting device

STL-KSTL

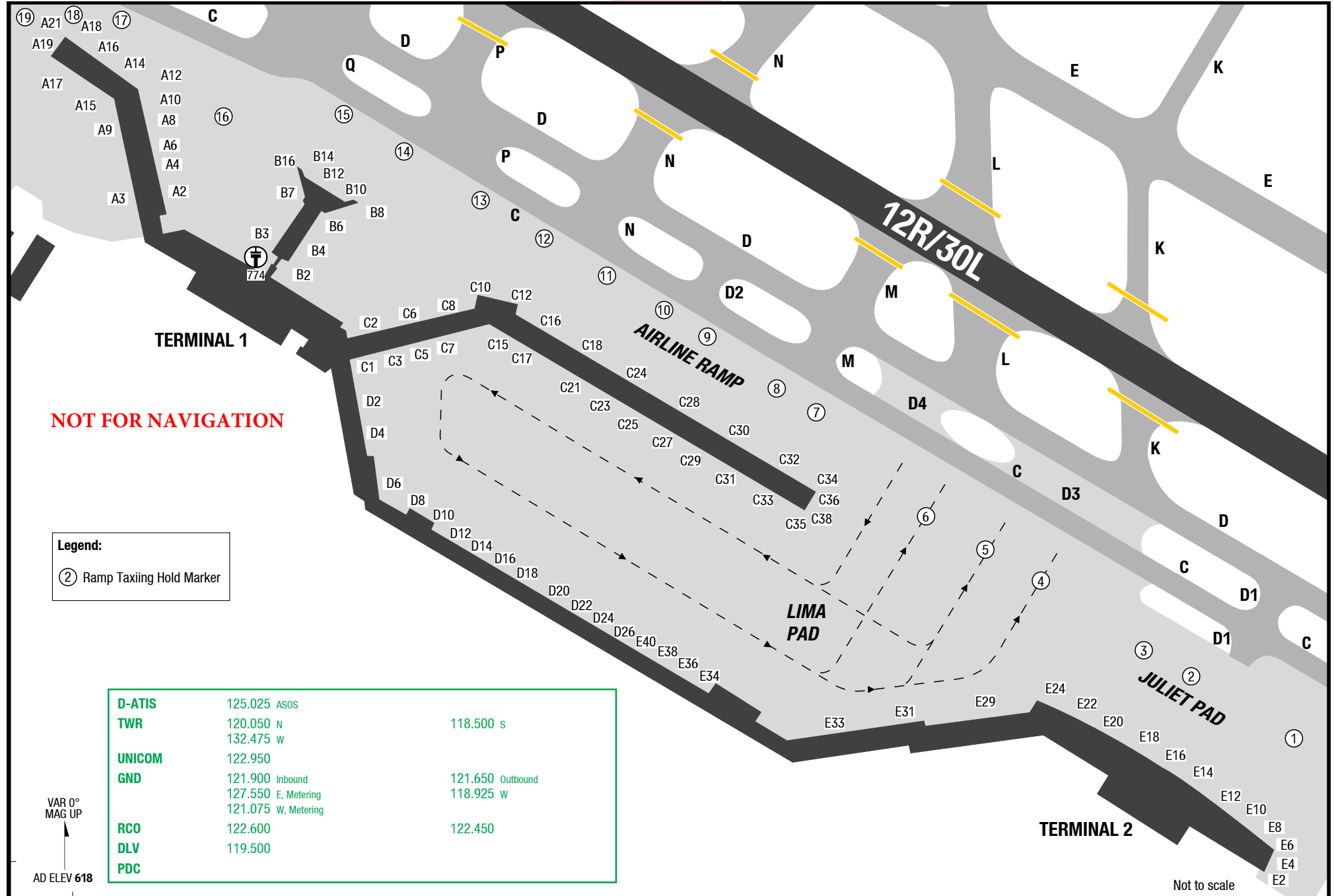
3-20

APC

APC

APC

APC



Legend:
② Ramp Taxiing Hold Marker

D-ATIS	125.025 ASOS	
TWR	120.050 N	118.500 s
	132.475 W	
UNICOM	122.950	
GND	121.900 Inbound	121.650 Outbound
	127.550 E, Metering	118.925 W
	121.075 W, Metering	
RCO	122.600	122.450
DLV	119.500	
PDC		

VAR 0°
MAG UP

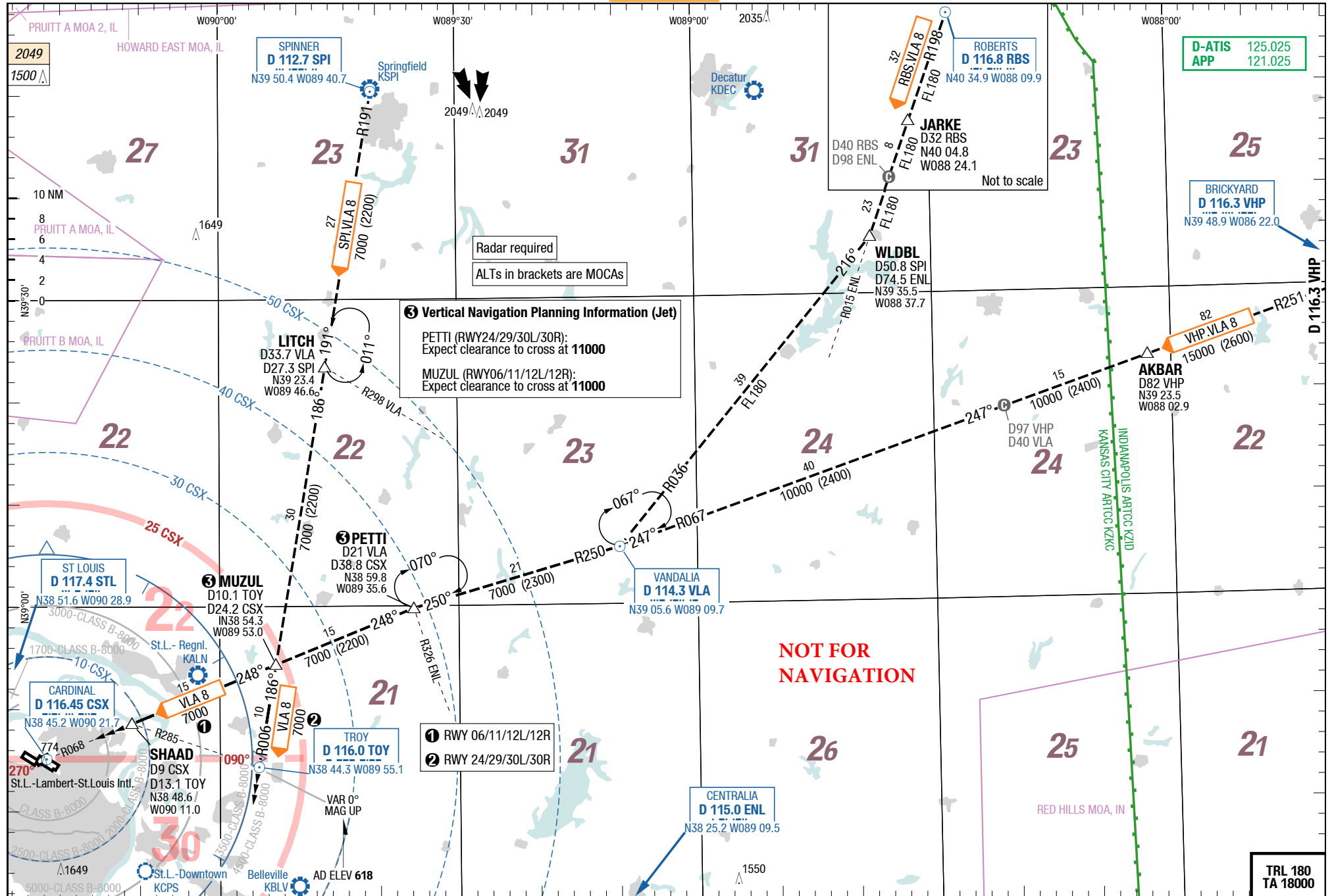
AD ELEV 618

Not to scale

6-80

VANDALIA 8 (VLA 8)

VANDALIA 8 (VLA 8)

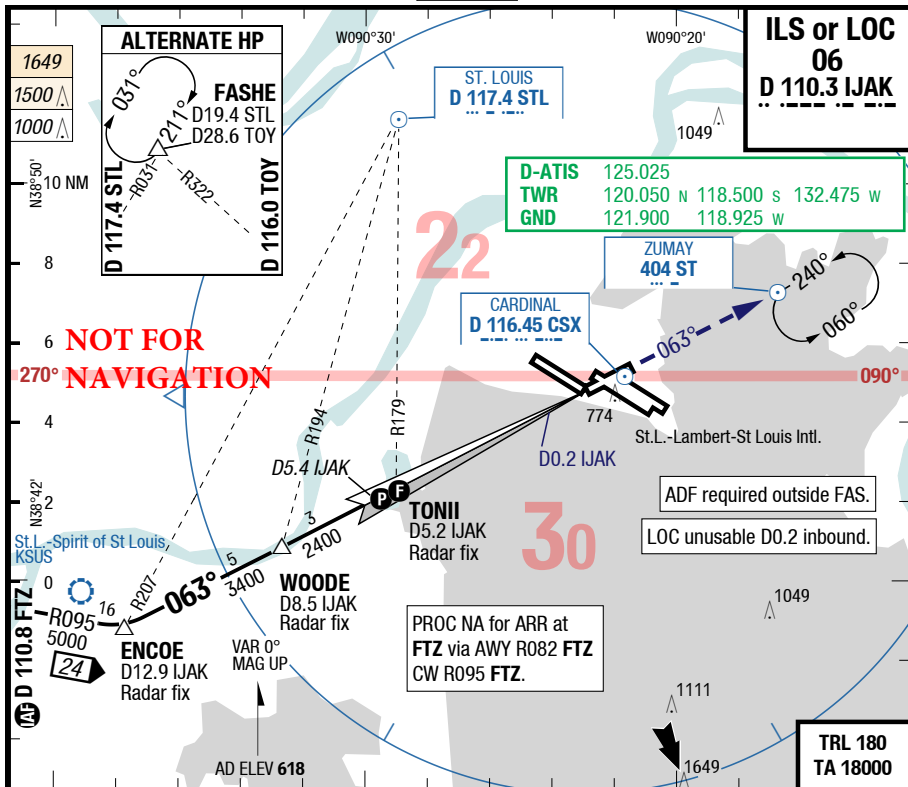


07-AUG-2014

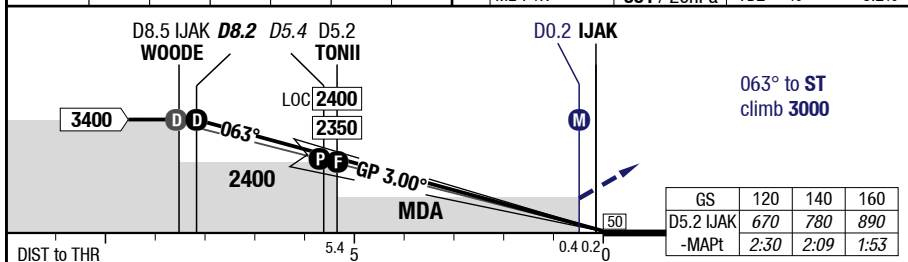
STL-KSTL

7-10

ILS or LOC 06



LOC 3.14° D IJAK	8.2	7	5	4	3	2	 7352 G 150 551 / 20hPa TDZ ---% -0.2%
	3400	2990	2320	1990	1660	1320	



06	Cat 1	LOC	C	ft - ft/SM ft	200 - 2400R/0.5V	470 - 4000R/0.75V	Circling TERPS
					760	1020	
D	ft - ft/SM ft	200 - 2400R/0.5V	470 - 5000R/1.0V	760	1020	Not published	

Changes: new

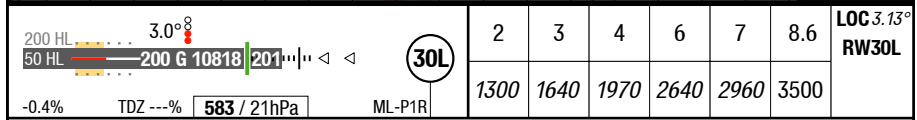
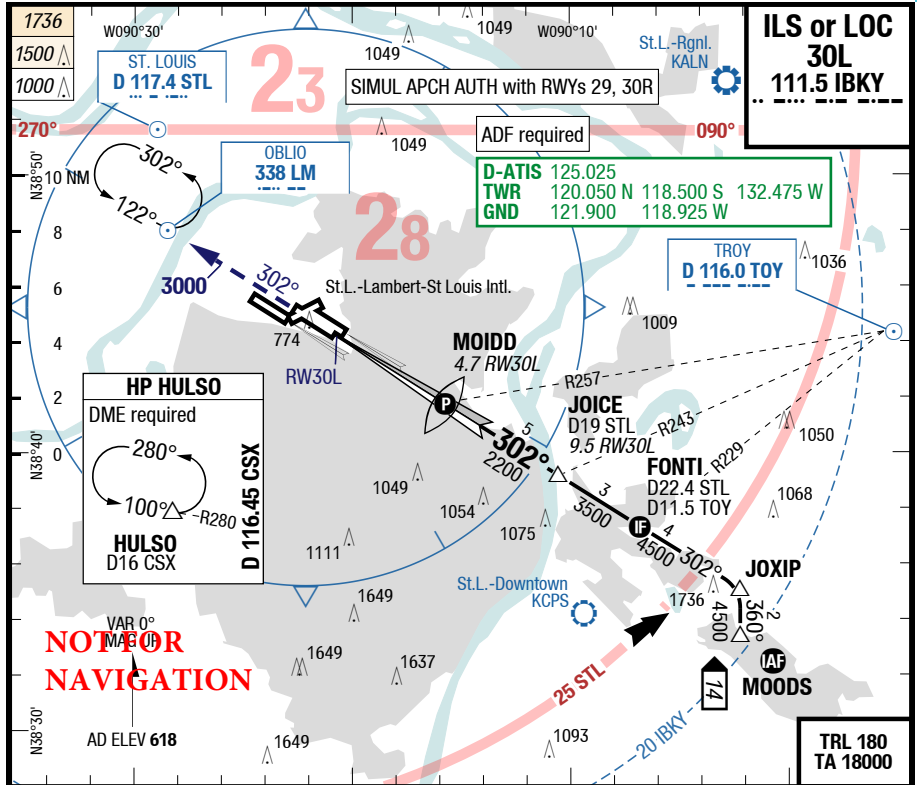
STI AMDT 1E

23-APR-2015

STL-KSTL

7-70

ILS or LOC 30L



30L	Cat 1 1)	LOC	Climb		Circling TERPS
			ft - ft/SM	ft	
C	200 - 1800R/0.5V	560 - 5000R/1.0V	790	1140	Not published
D	200 - 1800R/0.5V	560 - 6000R/1.25V	790	1140	Not published

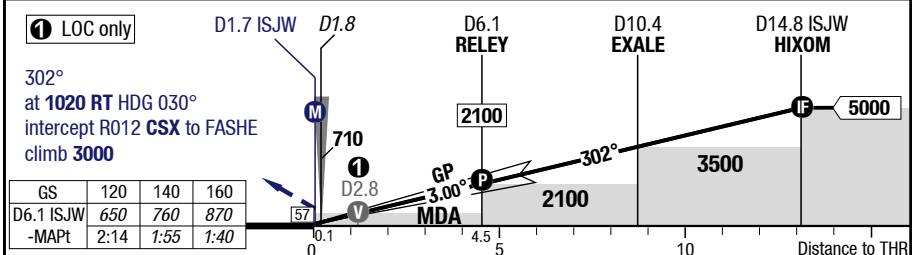
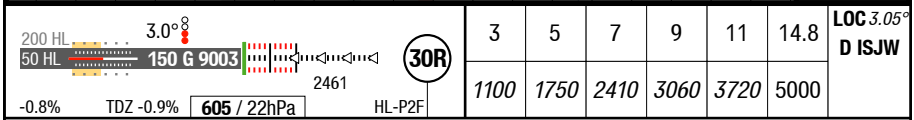
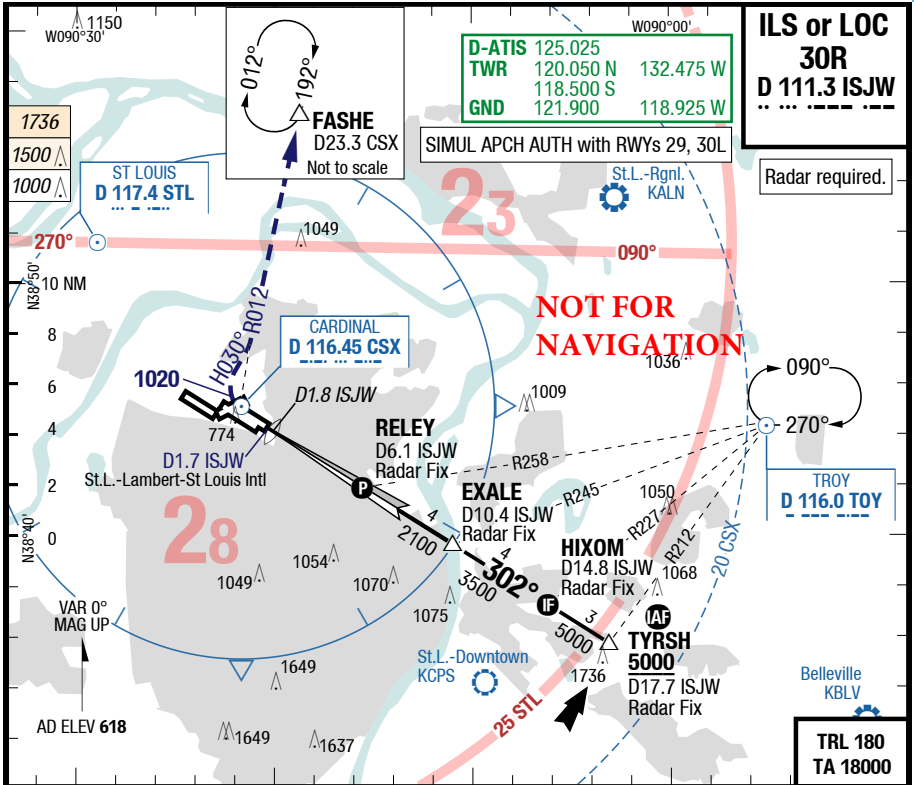
1) FD, AP or HGS required, else RVR 2400ft or VIS 0.5SM

Changes: APL

STI AMDT 12A

7-80

ILS or LOC 30R



	30R	Cat 3b	Cat 2 1)	Cat 1	LOC	Circling TERPS
C	ft - ft/SM	0 - 600R Company	100 - 1000R 116 RA	200 - 1800R/0.5V 810	420 - 4000R/0.75V 1020	Not published
D	ft - ft/SM	0 - 600R Company	100 - 1000R 116 RA	200 - 1800R/0.5V 810	420 - 4000R/0.75V 1020	Not published

1) If not conducting autoland RVR 1200ft required