

Attachment 32:

Party photographs – showing evidence of observed sink hole opposite 1642 Park Avenue; subsequent excavations and locations of material facts.



Figure 1: Sink-hole observed at the location of the 12-inch water main break, 8-inch HDPE gas main opposite 1642 Park Avenue during emergency response excavation. Source: FDNY

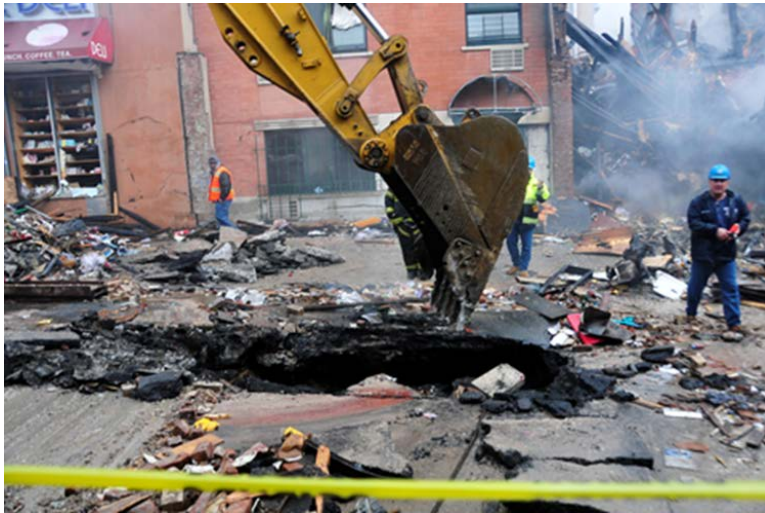


Figure 2: Excavator removing asphalt over 8-inch HDPE gas main, 2-inch HDPE gas service tee to 1642 Park Avenue and 12-inch cast iron water main during emergency response excavation. Source: Con Edison



Figure 3: Excavator removing asphalt over 8-inch HDPE gas main, 2-inch HDPE gas service tee to 1642 Park Avenue and 12-inch cast iron water main during emergency response excavation.
Source: Con Edison



Figure 4: Excavator bucket clearing pieces of roadway pavement (asphalt and concrete) from cavity at 8-inch HDPE gas main, 2-inch HDPE gas service tee to 1642 Park Avenue and 12-inch cast iron water main location during emergency response excavation. Source: Con Edison



Figure 5: Excavation shows both 12-inch water main break location and 8-inch HDPE going south to 1642 Park Avenue Service tee about 9 feet from water main crack during emergency response excavation. Source: FDNY



Figure 6: Excavation shows both 12-inch water main break location and 8-inch HDPE during emergency response excavation. Source: FDNY



Figure 7: Re-excavation at 1642 Park Avenue shows asphalt piece on top of service saddle tee cap that measured about 19 inches high during field investigation. Source: NYPSC.



Figure 8: Re-excavation at 1642 Park Avenue show asphalt piece on top of service saddle tee cap that measured about 14-20 inches wide during field investigation. Source: NYPSC