



**Bridge Factors Factual Report Attachment 20 – FDOT Average Annual Daily Traffic  
(AADT) and Lane Widths on SW 8<sup>th</sup> Street**

**Miami, FL**

**HWY18MH009**

(7 pages)

FLORIDA DEPARTMENT OF TRANSPORTATION  
 TRANSPORTATION STATISTICS OFFICE  
 2017 HISTORICAL AADT REPORT

COUNTY: 87 - MIAMI-DADE

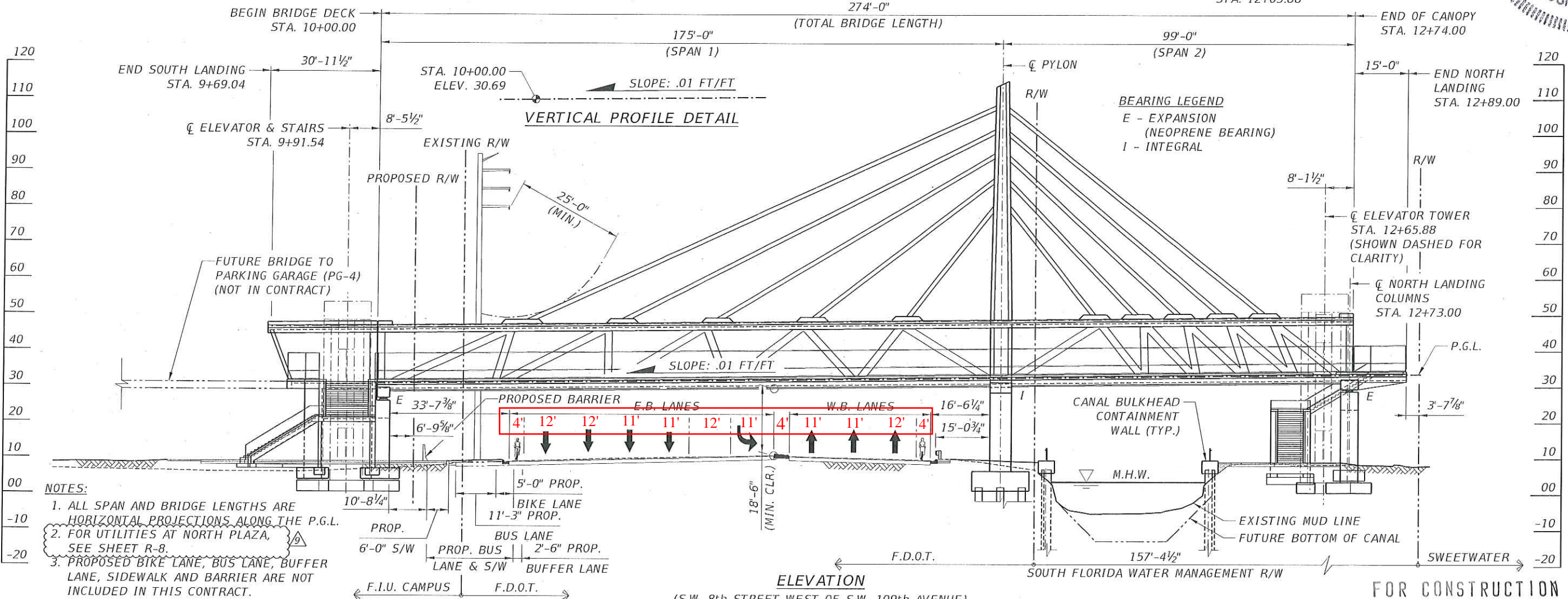
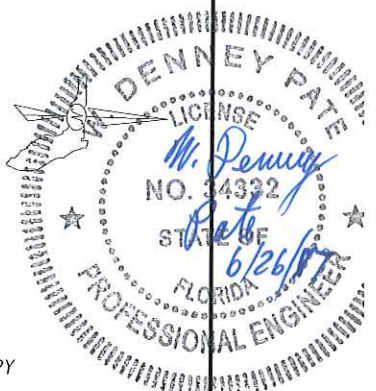
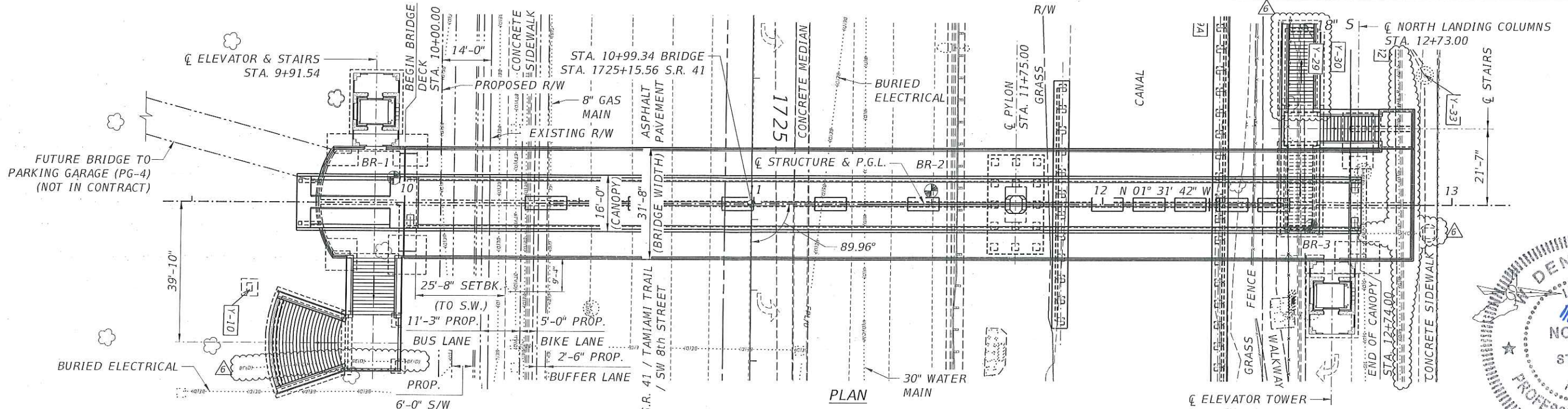
SITE: 0090 - SR 90/US-41/SW 8 ST, 500' E SW 109 AV

YEAR	AADT		DIRECTION 1		DIRECTION 2	*K FACTOR	D FACTOR	T FACTOR
2017	60000	C	E 33000		W 27000	9.00	54.00	3.50
2016	66500	C	E 33500		W 33000	9.00	56.10	5.00
2015	55000	C	E 31500		W 23500	9.00	57.40	3.80
2014	61000	C	E 33000		W 28000	9.00	59.30	5.10
2013	60000	F	E 30500		W 29500	9.00	58.90	5.50
2012	60000	C	E 30500		W 29500	9.00	59.70	5.50
2011	58500	C	E 31000		W 27500	9.00	58.20	6.60
2010	62000	C	E 32500		W 29500	7.87	58.27	6.60
2009	68500	C	E 33500		W 35000	7.98	59.96	4.60
2008	66000	C	E 31500		W 34500	8.07	66.31	5.00
2007	64500	C	E 31500		W 33000	7.90	63.12	5.00
2006	56000	C	E 28000		W 28000	7.39	58.66	4.10
2005	56500	C	E 28000		W 28500	7.70	65.70	6.10
2004	69000	C	E 37000		W 32000	8.20	67.10	6.10
2003	54000	C	E 27000		W 27000	8.10	72.30	4.70
2002	48000	C	E 23000		W 25000	9.20	68.00	4.50

AADT FLAGS: C = COMPUTED; E = MANUAL ESTIMATE; F = FIRST YEAR ESTIMATE  
 S = SECOND YEAR ESTIMATE; T = THIRD YEAR ESTIMATE; R = FOURTH YEAR ESTIMATE  
 V = FIFTH YEAR ESTIMATE; 6 = SIXTH YEAR ESTIMATE; X = UNKNOWN

\*K FACTOR: STARTING WITH YEAR 2011 IS STANDARDK, PRIOR YEARS ARE K30 VALUES





- NOTES:**
1. ALL SPAN AND BRIDGE LENGTHS ARE HORIZONTAL PROJECTIONS ALONG THE P.G.L.
  2. FOR UTILITIES AT NORTH PLAZA, SEE SHEET R-8.
  3. PROPOSED BIKE LANE, BUS LANE, BUFFER LANE, SIDEWALK AND BARRIER ARE NOT INCLUDED IN THIS CONTRACT.

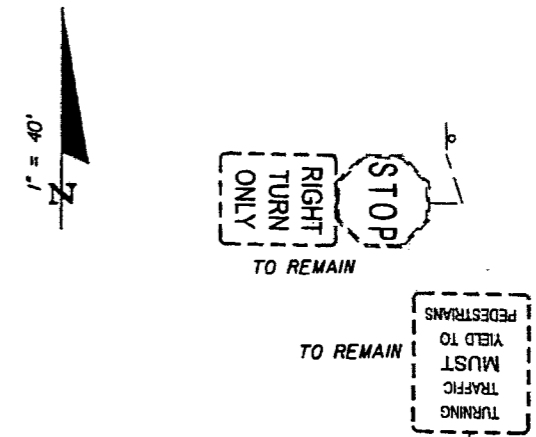
REVISIONS				ENGINEER OF RECORD:		DRAWN BY:			SHEET TITLE:	
DATE	BY	DESCRIPTION	DATE	BY	DESCRIPTION	DCB	DCB	GENERAL PLAN AND ELEVATION		
5/15/17	ENH	6 ADDED WESTWARD STAIRCASE AND UPDATED UTILITY FILE				DCB	DCB			
6/26/17	ENH	9 REVISED NOTE				MF	MF			

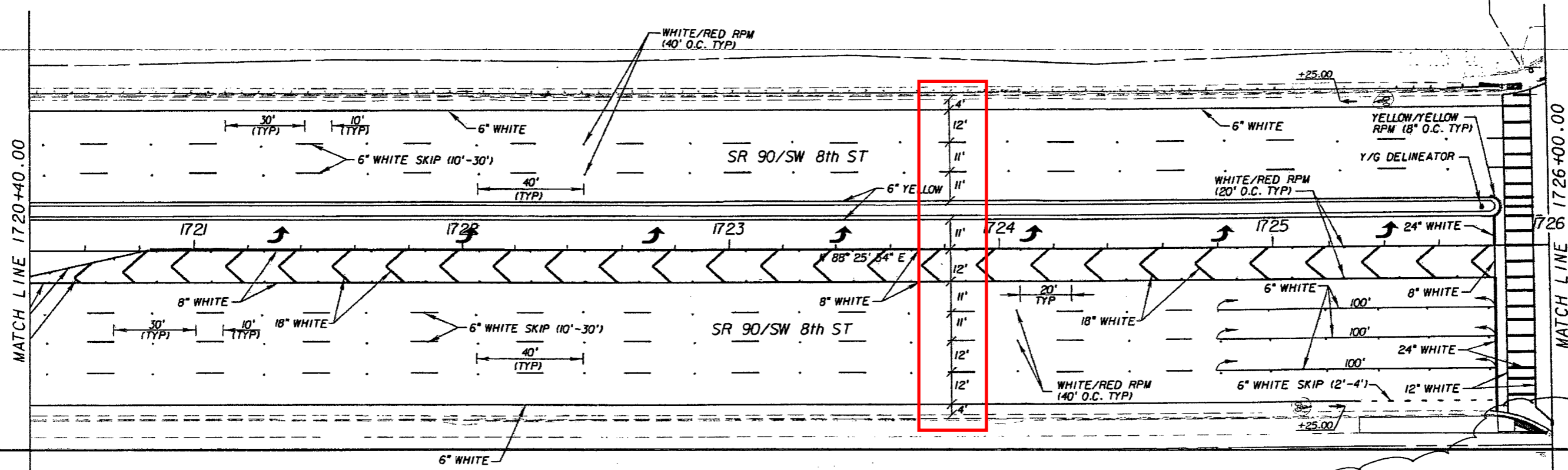
 424 North Calhoun Street Tallahassee, Florida 32301 FLORIDA CERTIFICATE OF AUTHORIZATION NO. 5618 W. DENNEY PATE, P.E. - P.E. NO. 34332		ROAD NO. MIAMI-DADE COUNTY PROJECT ID 434688-1-58-01	SHEET NO. B-4
--	--	--	---------------



FDOT Project: FM 425145-1-52-01  
 Construction Start: 06/18/2012  
 Final Acceptance: 01/09/2014



TAMIAMI CANAL



NOTE: FOR CONFIGURATION OF  
 PED. RAMP, REFER  
 TO PLAN SHEET #37.

**AS-BUILT PLANS**

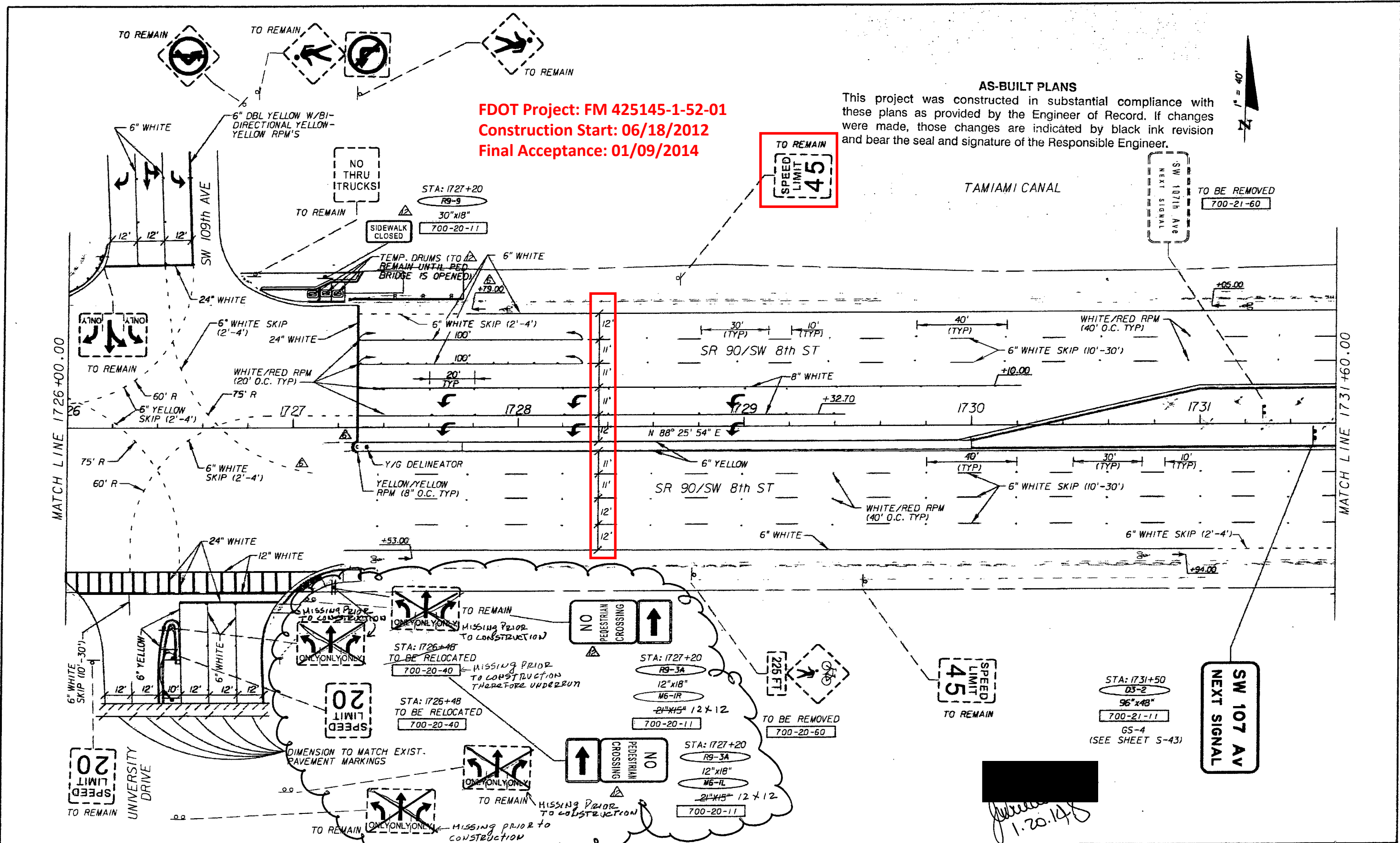
This project was constructed in substantial compliance with these plans as provided by the Engineer of Record. If changes were made, those changes are indicated by black ink revision and bear the seal and signature of the Responsible Engineer.

REVISIONS				 <small>ENTERPRISES, INC.          © CONSUL-TECHTEAM          FLORIDA CERTIFICATE OF AUTHORIZATION No. 26348          6100 BLUE LAGOON DRIVE, SUITE 300, MIAMI, FLORIDA 33126          (305) 461-5484 FAX (305) 461-5494          EVELIO CHAVEZ, P.E. No. 47558</small>	STATE OF FLORIDA DEPARTMENT OF TRANSPORTATION			<b>SIGNING AND PAVEMENT MARKING PLAN</b>	SHEET NO.  S-13
DATE	DESCRIPTION	DATE	DESCRIPTION		ROAD NO.	COUNTY	FINANCIAL PROJECT ID		
				90	MIAMI-DADE	425145-1-52-01			

NOTICE: THE OFFICIAL RECORD OF THIS SHEET IS THE ELECTRONIC FILE SIGNED AND SEALED UNDER RULE 6105-23.003, F.A.C.

**FDOT Project: FM 425145-1-52-01**  
**Construction Start: 06/18/2012**  
**Final Acceptance: 01/09/2014**

**AS-BUILT PLANS**  
 This project was constructed in substantial compliance with these plans as provided by the Engineer of Record. If changes were made, those changes are indicated by black ink revision and bear the seal and signature of the Responsible Engineer.



REVISIONS	
DATE	DESCRIPTION
02/12/13	△ MODIFIED MARKINGS
08/19/13	△ ADDED CROSSWALK

**ConsulTech**  
 CONSULTING ENGINEERS, INC.  
 © CONSUL-TECH 2006  
 FLORIDA CERTIFICATE OF AUTHORIZATION NO. 28348  
 6100 BLUE LAGOON DRIVE, SUITE 300, MIAMI, FLORIDA 33126  
 (305) 461-5484 FAX (305) 461-5484  
 EVELIO CHAVEZ, P.E. No. 47558

STATE OF FLORIDA DEPARTMENT OF TRANSPORTATION		
ROAD NO.	COUNTY	FINANCIAL PROJECT ID
90	MIAMI-DADE	425145-1-52-01

**SIGNING AND PAVEMENT  
MARKING PLAN**

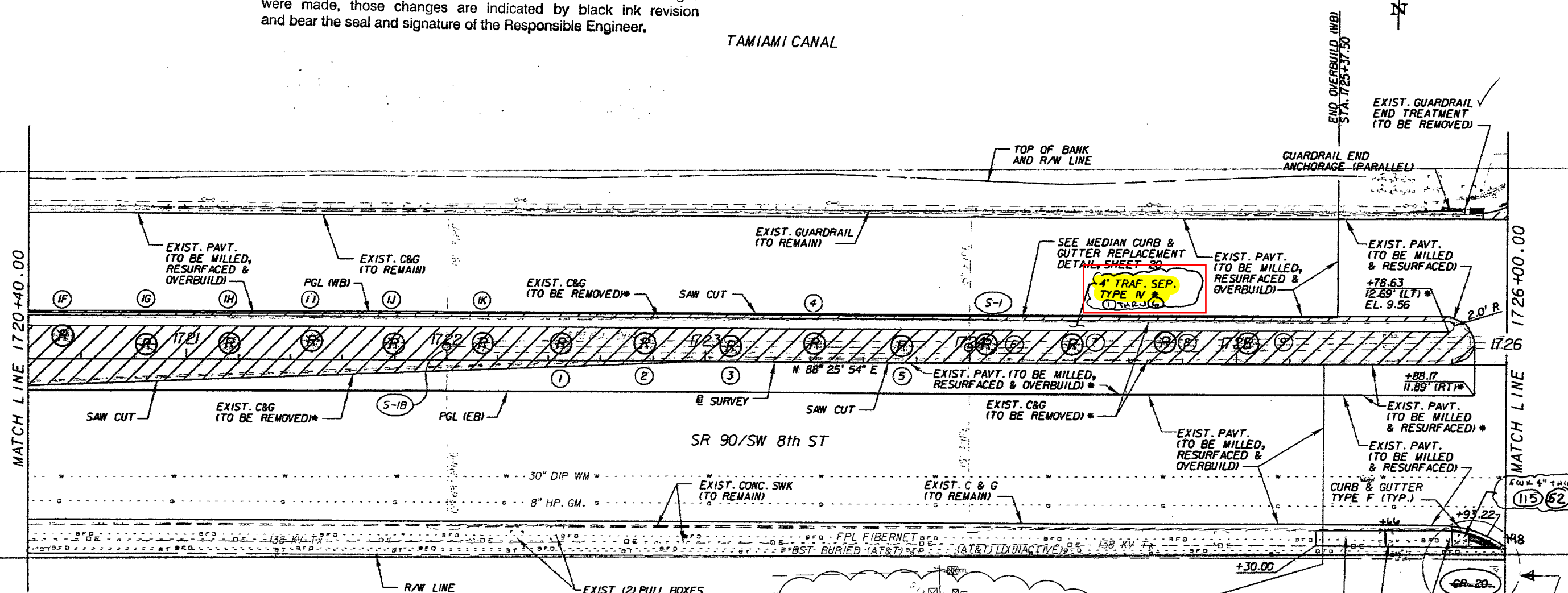
SHEET NO. S-14

*[Handwritten signature]*  
 1.20.14

**AS-BUILT PLANS**

This project was constructed in substantial compliance with these plans as provided by the Engineer of Record. If changes were made, those changes are indicated by black ink revision and bear the seal and signature of the Responsible Engineer.

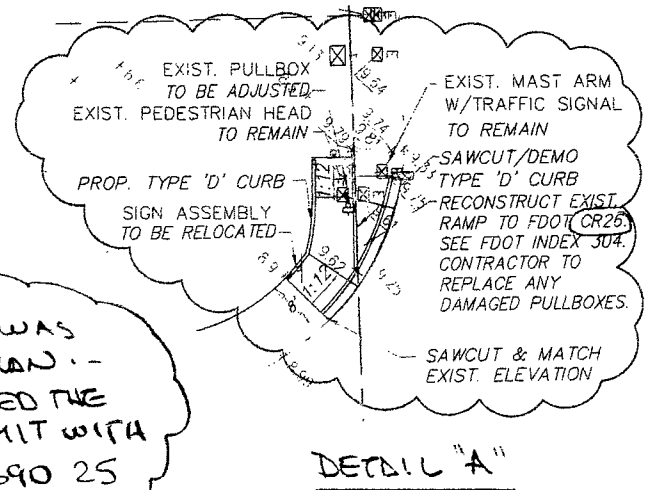
**TAMIAMI CANAL**



**LEGEND**

- \* ITEMS TO BE PAID FOR UNDER FINANCIAL PROJECT ID 425145-4-52-01
- (T) EXISTING TREE TO BE RELOCATED \*
- (\*) TREE NUMBER
- //// WIDENING \*

**NOTE:** SW CORNER RAMP WAS CONSTRUCTED PER PLAN. - FIU RECONSTRUCTED THE RAMP UNDER PERMIT WITH FOOT # 2012 C 690 25

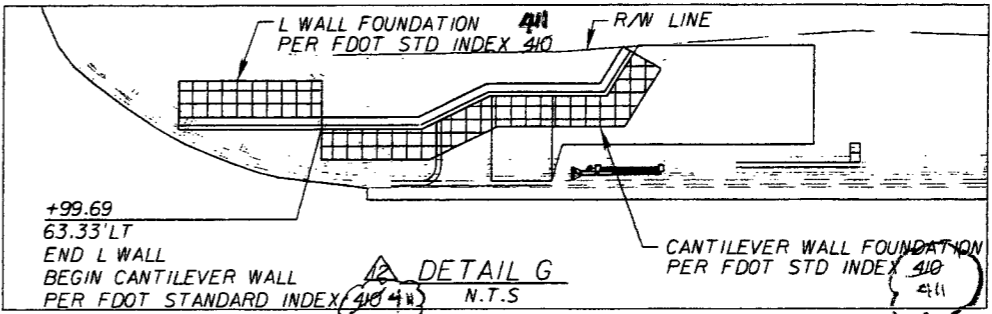
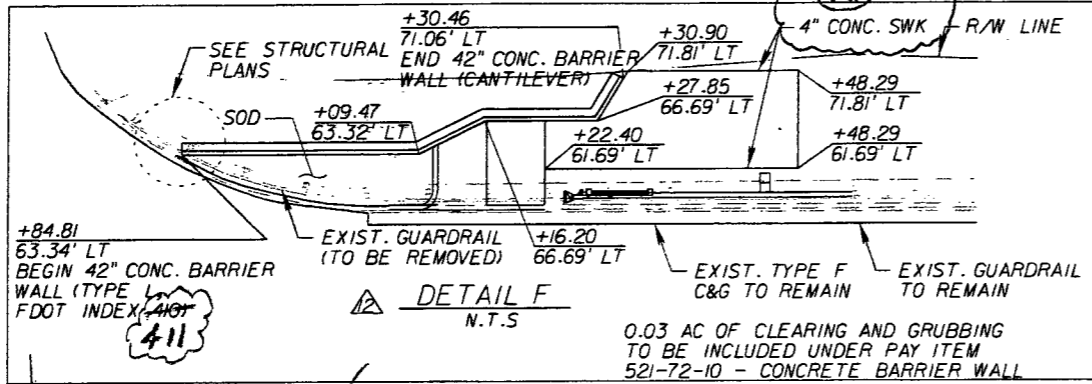


REVISIONS		REVISIONS		<p><b>ConsulTech</b> ENTERPRISES, INC. ID CONSUL-TECH-2888 FLORIDA CERTIFICATE OF AUTHORIZATION NO. 28348 6100 BLUE LAGOON DRIVE, SUITE 300, MIAMI, FLORIDA 33126 13051 461-5484 FAX 13051 461-5484 EVELIO CHAVEZ, P.E. No. 47558</p>	STATE OF FLORIDA DEPARTMENT OF TRANSPORTATION			<p><b>PLAN SHEETS</b></p>	<p>SHEET NO. 37</p>
DATE	DESCRIPTION	DATE	DESCRIPTION		ROAD NO.	COUNTY	FINANCIAL PROJECT ID		
				90	MIAMI-DADE	425145-1-52-01			

NOTICE: THE OFFICIAL RECORD OF THIS SHEET IS THE ELECTRONIC FILE SIGNED AND SEALED UNDER RULE 61G5-23.003, F.A.C.

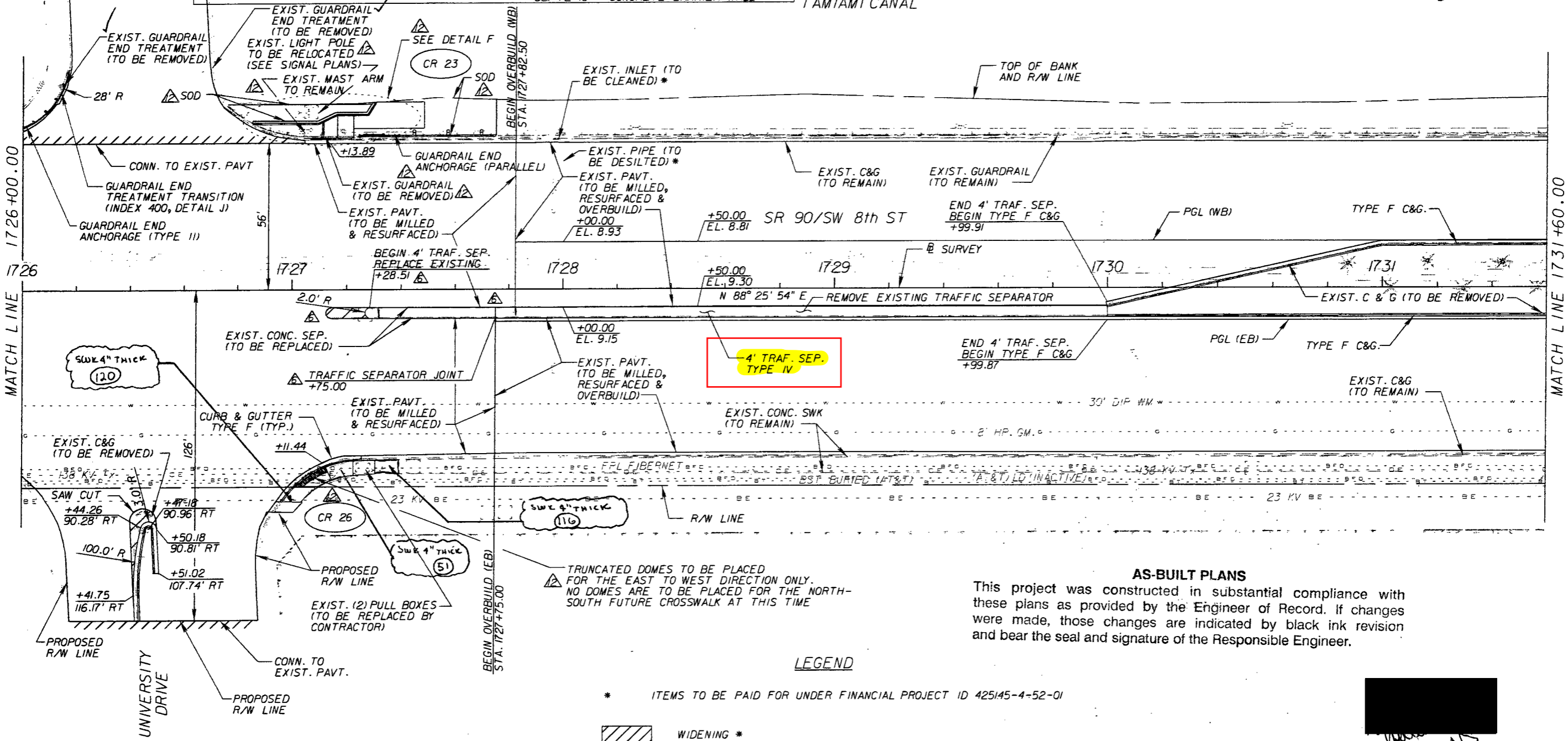


SW 109th AVE



1" = 40'  
 PER E-mail FROM  
 EOR ON 10-17-13

TAMIAMI CANAL



**AS-BUILT PLANS**

This project was constructed in substantial compliance with these plans as provided by the Engineer of Record. If changes were made, those changes are indicated by black ink revision and bear the seal and signature of the Responsible Engineer.

**LEGEND**

- \* ITEMS TO BE PAID FOR UNDER FINANCIAL PROJECT ID 425145-4-52-01
- WIDENING \*
- BARRIER WALL FOUNDATION

*[Signature]*  
 1-20-14

REVISIONS		REVISIONS	
DATE	DESCRIPTION	DATE	DESCRIPTION
02/12/13	△ MODIFIED MEDIAN		
08/19/13	△ MODIFIED DESIGN		

**ConsulTech**  
 ENTERPRISES INC.  
 © CONSUL-TECH 2006  
 FLORIDA CERTIFICATE OF AUTHORIZATION No. 28346  
 6100 BLUE LAGOON DRIVE, SUITE 300, MIAMI, FLORIDA 33126  
 (305) 461-5484 FAX (305) 461-5494  
 EVELIO CHAVEZ, P.E. No. 47558

STATE OF FLORIDA DEPARTMENT OF TRANSPORTATION		
ROAD NO.	COUNTY	FINANCIAL PROJECT ID
90	MIAMI-DADE	425145-1-52-01

**PLAN SHEETS**

SHEET NO.  
 38