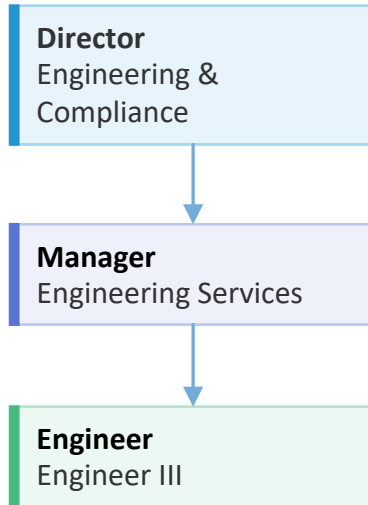
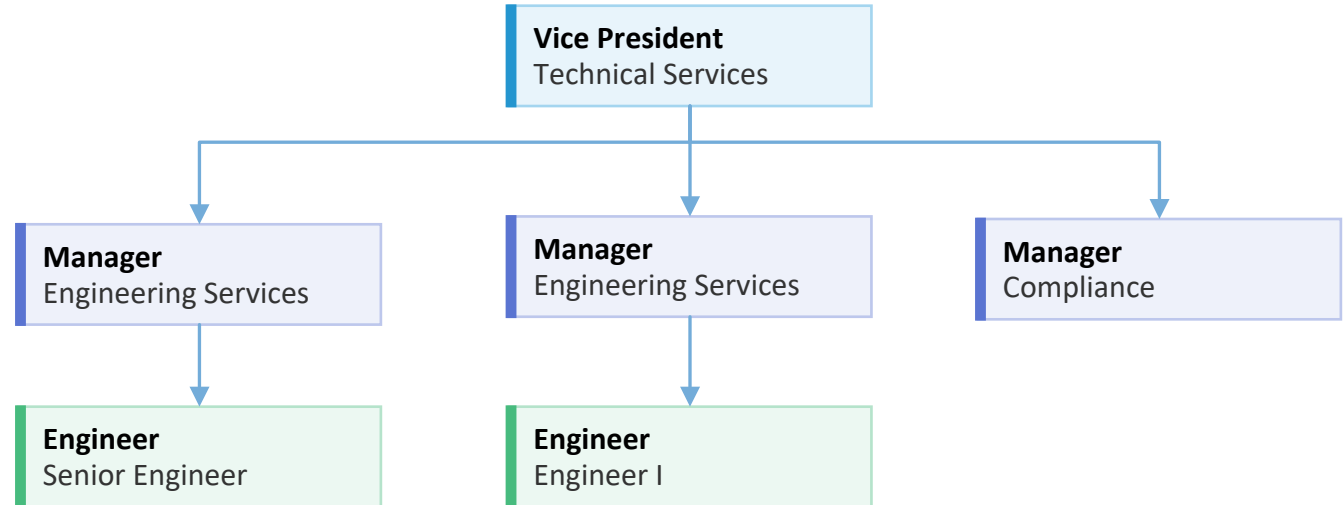


Safety & Enterprise Services (SES) DIM Support



- Maintain written DIM Plan
- Configure, load data, and run risk model
- Identify risk model and input data enhancements
- Coordinate participation of divisional team members and stakeholders
- Advise on Enterprise and Division risks
- Administer DIM tool ecosystem

Mississippi Division DIM Stakeholders



- Serve as liaison points for DIM between Divisions and SES
- Provide local institutional and distribution system knowledge
- Coordinate participation of local Subject Matter Experts (SMEs) in review/validation of risk model results
- Provide insight into potential and emerging system threats
- Identify any additional areas exposed to risk
- Select and execute mitigating actions