

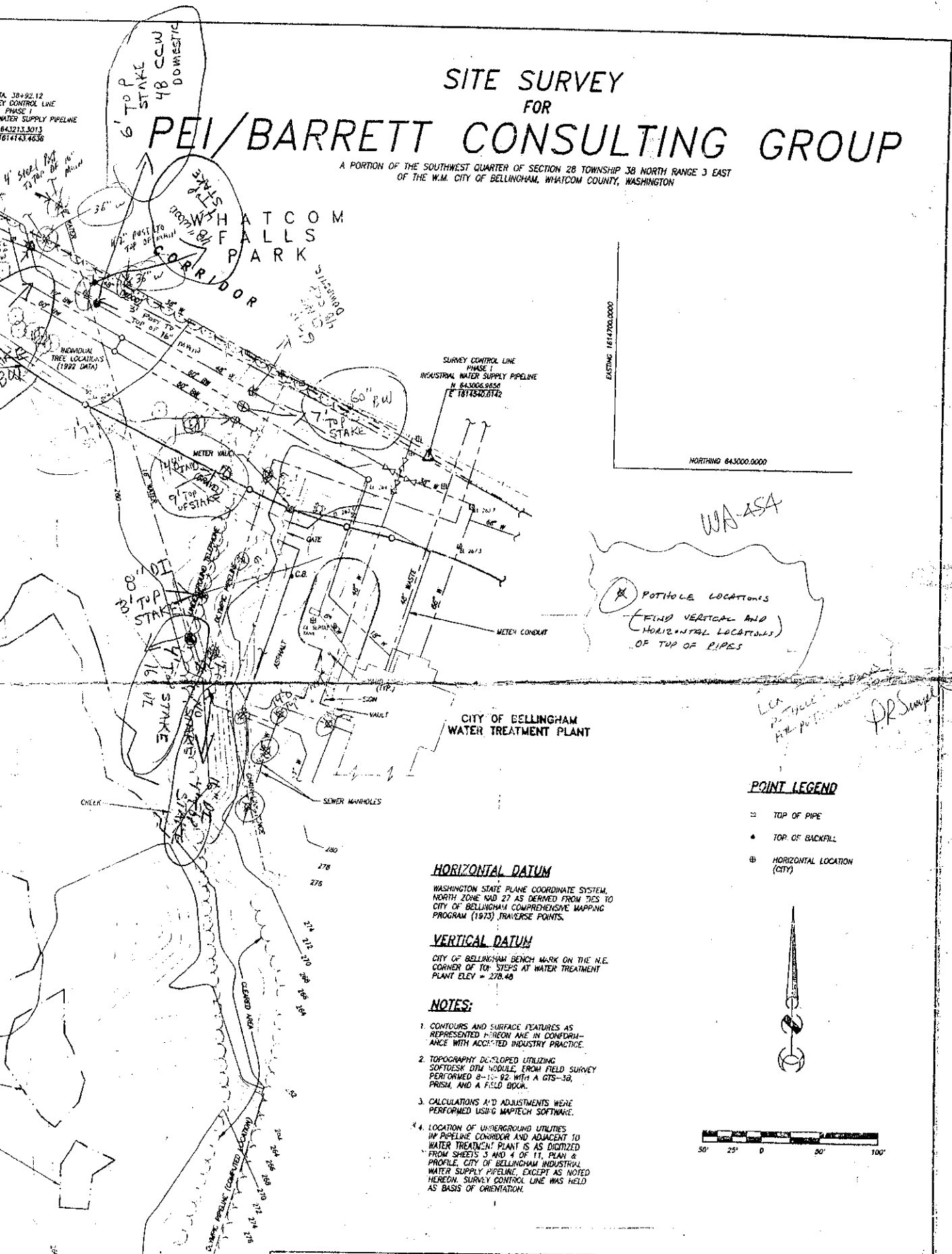
Appendix A

February 1993 Pothole Locations

TA 38+92.12
 SURVEY CONTROL LINE
 PHASE I
 WATER SUPPLY PIPELINE
 843213.3013
 1614743.4636

SITE SURVEY FOR PEI/BARRETT CONSULTING GROUP

A PORTION OF THE SOUTHWEST QUARTER OF SECTION 28 TOWNSHIP 38 NORTH RANGE 3 EAST
 OF THE W.M. CITY OF BELLINGHAM, WHATCOM COUNTY, WASHINGTON



WA-ASA

POT HOLE LOCATIONS
 (FIND VERTICAL AND
 HORIZONTAL LOCATIONS
 OF TOP OF PIPES)

POINT LEGEND

- TOP OF PIPE
- TOP OF BACKFILL
- ⊕ HORIZONTAL LOCATION (CITY)

HORIZONTAL DATUM

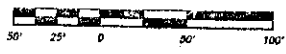
WASHINGTON STATE PLANE COORDINATE SYSTEM,
 NORTH ZONE, NAD 27 AS DERIVED FROM TIES TO
 CITY OF BELLINGHAM COMPREHENSIVE MAPPING
 PROGRAM (1973) TRAVERSE POINTS.

VERTICAL DATUM

CITY OF BELLINGHAM BENCH MARK ON THE N.E.
 CORNER OF TOP STEPS AT WATER TREATMENT
 PLANT ELEV = 278.48

NOTES:

1. CONTOURS AND SURFACE FEATURES AS REPRESENTED HEREON ARE IN CONFORMANCE WITH ACCEPTED INDUSTRY PRACTICE.
2. TOPOGRAPHY DEVELOPED UTILIZING SOUTHWEST DIM WOODS, FROM FIELD SURVEY PERFORMED 8-15-92 WITH A GTS-3B, PRISM, AND A FIELD BOOK.
3. CALCULATIONS AND ADJUSTMENTS WERE PERFORMED USING MAPTECH SOFTWARE.
4. LOCATION OF UNDERGROUND UTILITIES IN PIPELINE CORRIDOR AND ADJACENT TO WATER TREATMENT PLANT IS AS DIGITIZED FROM SHEETS 3 AND 4 OF 11, PLAN 8 PROFILE, CITY OF BELLINGHAM INDUSTRIAL WATER SUPPLY PIPELINE, EXCEPT AS NOTED HEREDIN. SURVEY CONTROL LINE WAS HELD AS BASIS OF ORIENTATION.



SURVEYOR'S CERTIFICATE

This map correctly represents a survey made by me or under my direction and is noted hereon, at the request of P.E.I. / BARRETT in September of 1992.

PETER R. HASTON J.S. 113730



322 NORTH COMMERCIAL STREET
 SUITE 201
 BELLINGHAM, WASHINGTON

DRAWN: R. ALEXANDER
CHKD: PRH
DATE: DEC. 16, 1992
SCALE: 1" = 50'
JOB NO: 9592131