

**National Transportation Safety Board
Internal Inspection Factual
Bellingham, Washington
Accident DCA99-MP008**

Appendix 10 Olympic dig sheet dated 7/97

OLYMPIC PIPE LINE COMPANY

LINALOG DIG INFORMATION

DIRECTIONS TO DIG SITE

Drawing # FE-1

Pipeline Segment FE-AL 16"

M.P. 16.0

Joint Length 23'

Defect % 23

Defect Length 0.4"

Detail:

ENOURO 1/97
FROM ~~1200000~~ RUN ~~0000~~

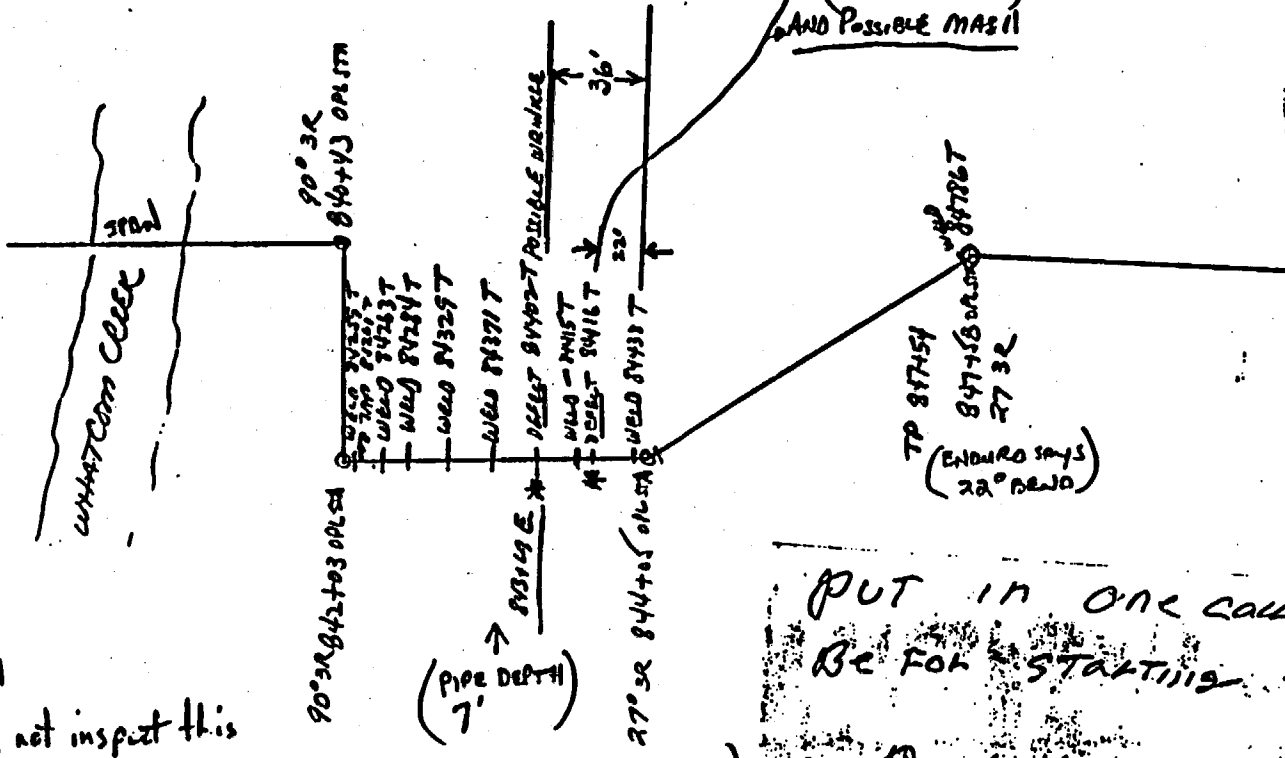
Line Sheet S - 100 - 7

Position 1 O'clock

2 welds
4' apart

0000082

CONFIDENTIAL
DO NOT COPY
AIB




(1'-6" from weld)
AND POSSIBLE MASH

TP 87454
87455 OR 87456
27 3R
(ENOURO SAYS
22° BEND)

PUT IN ONE CALL
BE FOR STARTING
Back Hoe
EXTEND A HOE

BILL L EVANS
Chief Operator
Water Treatment Plant
(206) 878-6392



City of
Bellingham
2221 Pacific St.
Bellingham, WA 98226

5801
at Bot SILVER BEACH
WATCH PLANT
MP 16

ONE CALL
water lines on
TOP OF ORL

491
Did not inspect this location.
Tuboscope possible Mill/mach 23% (min)
Enclosure 4:5 sharp (less than repairable)

RIK.
(Difficult access to access)
KalsmartplgDIG2

AFE 9