

**WOOD CO/COLLINS FLD** (See MINEOLA/QUITMAN on page 371)

## WOODVILLE

**TYLER CO** (Ø9R) 2 W UTC-6(-5DT) N30°46.51' W94°27.51'

388 B NOTAM FILE CXO

**RWY 16-34:** H4000X60 (ASPH) S-30 MIRL

**RWY 16:** PAPI(P2L)—GA 3.0° TCH 38'. Thld displcd 178'.

**RWY 34:** Trees.

**SERVICE:** LGT Dusk-dawn. MIRL Rwy 16-34 preset low ints, to increase ints ACTIVATE—122.8.

**AIRPORT REMARKS:** Unattended. Rwy 16, 5' drop-off 25' from W side 400' S of thld and 20' drop-off 100' N of thld. Rwy 16-34 marking faded.

**AIRPORT MANAGER:** 409-283-7623

**COMMUNICATIONS:** CTAF 122.9

**CLEARANCE DELIVERY PHONE:** For CD ctc Houston ARTCC at 281-230-5622.

**RADIO AIDS TO NAVIGATION:** NOTAM FILE LFK.

**LUFKIN (VH) (H) VORTACW** 112.1 LFK Chan 58 N31°09.75' W94°43.01' 145° 26.7 NM to fld. 207/5E.

TACAN AZIMUTH unusable:

260°-275° byd 30 NM

275°-260° byd 30 NM blo 2,500'

DME unusable:

260°-275° byd 30 NM

275°-260° byd 30 NM blo 2,500'

VOR unusable:

305°-312° byd 40 NM

313°-323° byd 40 NM blo 2,300'

313°-323° byd 66 NM

324°-330° byd 40 NM

HOUSTON  
L-19E, 21A

**WOOLE** N31°16.78' W100°34.57' NOTAM FILE SJT.

**NDB (LOMW)** 356 SJ 036° 6.2 NM to San Angelo Rgnl/Mathis Fld. 2127/5E.

SAN ANTONIO  
L-19B

**YOAKUM CO** (See PLAINS on page 387)

**YOAKUM MUNI** (T85) 1 N UTC-6(-5DT) N29°18.79' W97°08.31'

365 B NOTAM FILE CXO

**RWY 13-31:** H3444X60 (ASPH) S-12 MIRL 0.7% up NW

**RWY 13:** Pole.

**RWY 31:** Pole.

**AIRPORT REMARKS:** Unattended. Rwy 13 and 31 markings faded.

**AIRPORT MANAGER:** (361) 293-6321

**COMMUNICATIONS:** CTAF 122.9

® HOUSTON CENTER APP/DEP CON 132.8

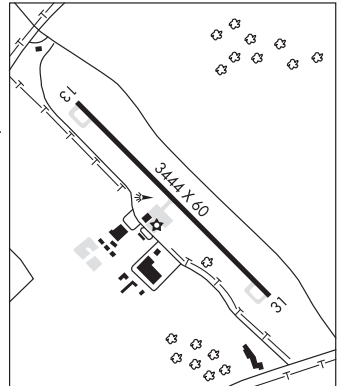
**CLEARANCE DELIVERY PHONE:** For CD ctc Houston ARTCC at 281-230-5622.

**RADIO AIDS TO NAVIGATION:** NOTAM FILE ELA.

**EAGLE LAKE (H) DME** 116.4 ELA Chan 111 N29°39.75'

W96°19.03' 244° 47.8 NM to fld. 192.

SAN ANTONIO  
L-19D, 21A  
IAP



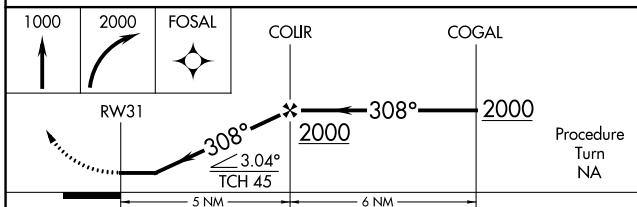
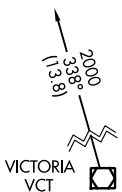
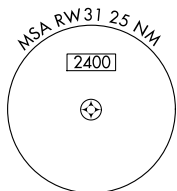
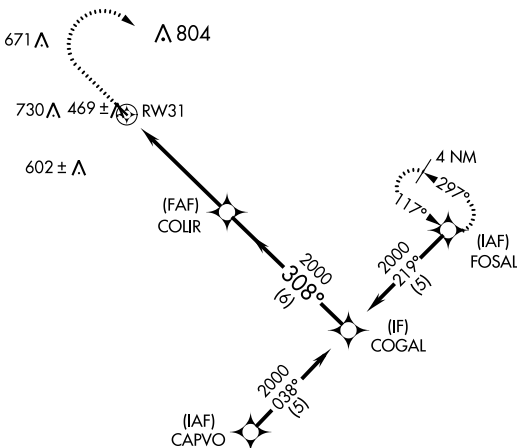
APP CRS	Rwy Idg	<b>3444</b>
<b>308°</b>	TDZE	<b>363</b>
	Apt Elev	<b>365</b>

# RNAV (GPS) RWY 31

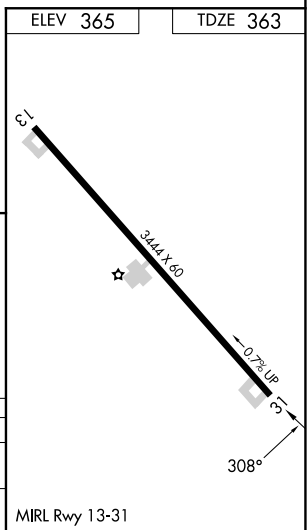
YOAKUM MUNI (T85)

RNP APCH-GPS.	MISSED APPROACH: Climb to 1000 then climbing right turn to 2000 direct FOSAL and hold.
Use Victoria Rgnl altimeter setting. Procedure NA at night.	
NA Rwy 31 helicopter visibility reduction below 3/4 SM NA.	

VCT ASOS <b>119.025</b>	HOUSTON CENTER <b>132.8 343.7</b>	CTAF <b>122.9</b>
----------------------------	--------------------------------------	----------------------



CATEGORY	A	B	C	D
LNVA MDA	840-1 477 (500-1)		840-1 1/4 477 (500-1 1/4)	NA
CIRCLING	920-1 555 (600-1)		1200-2 1/2 835 (900-2 1/2)	NA



SC-3, 29 DEC 2022 to 26 JAN 2023

SC-3, 29 DEC 2022 to 26 JAN 2023