

**Factual Report – Attachment 9**

**KTN Charts**

**OPERATIONAL FACTORS**

ANC21FA069

**PAKT/KTN**  
**KETCHIKAN INTL**

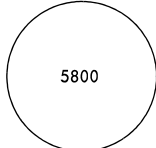
**KETCHIKAN, ALASKA**

1. Airport Qualification: Mountainous Terrain
2. Seaplane Operations Directly Northeast of Airport
3. Terrain Causes Turbulence on Arrival and Departure Routes

Apt Elev **92'**

1 NM West Ketchikan

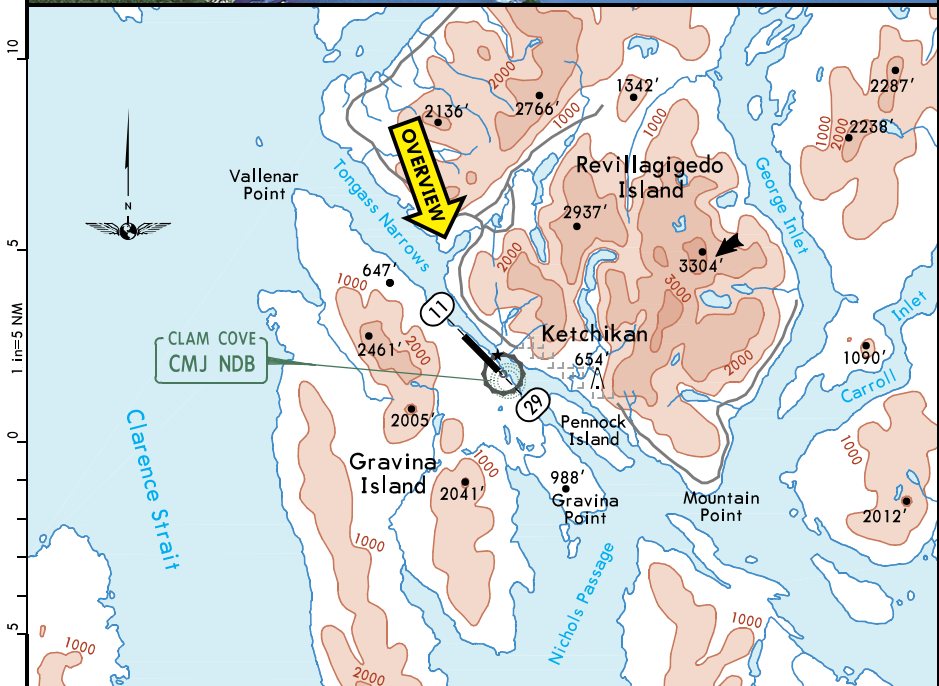
N55 21.2 W131 42.7

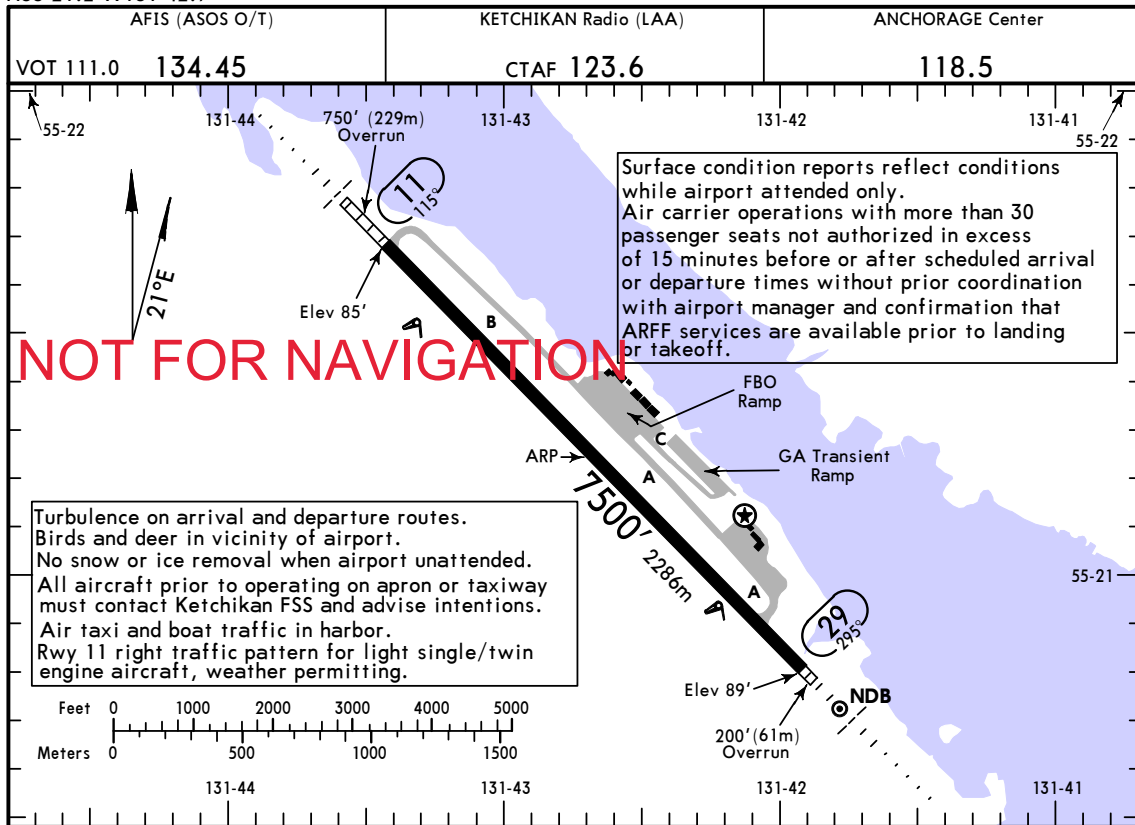


MSA CMJ NDB

**OVERVIEW**

**NOT FOR NAVIGATION**





ADDITIONAL RUNWAY INFORMATION

RWY	Landing Lights	Surface	RVR	USABLE LENGTHS			WIDTH
				Threshold	Glide Slope	TAKE-OFF	
11	① HIRL ① MALSR ② PAPI-L	grooved	RVR		6586' 2007m		150'
29	① HIRL ① MALSR ③ PAPI-L	grooved	RVR				46m

① Activate on 123.6 when FSS inop. ② PAPI unusable beyond 5 degrees left and right of course. Angle 3.00°. ③ PAPI unusable beyond 6 NM. Angle 3.00°.

TAKE-OFF & OBSTACLE DEPARTURE PROCEDURE

FOR FILING AS ALTERNATE

	Rwy 11	Rwy 29	FOR FILING AS ALTERNATE				Other	
			ILS Y Rwy 11 ILS Z Rwy 11	LOC Y Rwy 11 LOC Z Rwy 11	RNAV (GPS)-B	LOC X Rwy 11		
1 & 2 Eng	USE KETCHIKAN DEPARTURE	USE SKOWL DEPARTURE	A	600-2	800-2	1900-2	2100-2	NA
B			2600-2		2600-2			
C			800-2 1/2	2800-3	3000-3			
D					3300-3			

TAKE-OFF OBSTACLE NOTES: Note Rwy 11: electrical system 5' from DER, 55' left of centerline, 1' AGL/90' MSL. Electrical system 5' from DER, 54' right of centerline, 1' AGL/90' MSL. Tree 107' from DER, 514' left of centerline, 93' MSL. Tree 190' from DER, 508' left of centerline, 76' AGL/95' MSL. Tree 483' from DER, 572' right of centerline, 126' MSL. Tree 966' from DER, 692' right of centerline, 128' MSL. Tree 1072' from DER, 693' right of centerline, 144' MSL. Trees beginning 1195' from DER, 659' right of centerline, up to 154' MSL. Tree 2469' from DER, 1001' right of centerline, 164' MSL. Tree 2567' from DER, 1060' right of centerline, 168' MSL. Trees beginning 2768' from DER, 1014' right of centerline, up to 173' MSL. Note: Rwy 29, trees beginning 428' from DER, 549' left of centerline, up to 121' MSL. Trees beginning 671' from DER, 572' left of centerline, up to 135' MSL. Tree 2370' from DER, 1093' left of centerline, 147' MSL. Tree 2728' from DER, 989' left of centerline, 154' MSL. Trees beginning 2787' from DER, 1089' left of centerline, up to 164' MSL. Tree 3059' from DER, 1264' left of centerline, 188' MSL. Trees beginning 3195' from DER, 971' left of centerline, up to 194' MSL. Trees beginning 3558' from DER, 1125' left of centerline, up to 220' MSL. Trees beginning 3658' from DER, 1243' left of centerline, up to 234' MSL. Trees beginning 3754' from DER, 840' left of centerline, up to 238' MSL. Trees beginning 5550' from DER, 1591' left of centerline, up to 250' MSL. Tree 6050' from DER, 1934' left of centerline, 252' MSL. Trees beginning 6070' from DER, 1883' left of centerline, up to 284' MSL. Tree 1.9 NM from DER, 3275' left of centerline, 390' MSL. Tree 2 NM from DER, 3284' left of centerline, 415' MSL. Tree 2 NM from DER, 3381' left of centerline, 462' MSL. Tree 2.2 NM from DER, 4085' left of centerline, 100' AGL/576' MSL. Trees beginning 2.2 NM from DER, 2371' left of centerline, up to 607' MSL. Trees beginning 2.3 NM from DER, 3644' left of centerline, up to 100' AGL/622' MSL. Trees beginning 2.3 NM from DER, 2461' left of centerline, up to 640' MSL. Trees beginning 2.3 NM from DER, 2432' left of centerline, up to 647' MSL. Tree 2.3 NM from DER, 4153' left of centerline, 100' AGL/658' MSL. Trees beginning 2.3 NM from DER, 2171' left of centerline, up to 783' MSL. Trees beginning 2.4 NM from DER, 2456' left of centerline, up to 866' MSL.

Public	Longest Rwy (LDA): Rwy 11/29 - 7500' (2286m)			Time Conv (Std): UTC -9
<b>OVERVIEW</b>				
<p>Ketchikan International Airport is located on the northeastern shoreline of Gravina Island. Gravina is part of Alaska's southeastern panhandle, which is composed of more than 1100 offshore islands. The airport is surrounded by heavily forested mountains that abruptly rise above 3000 feet MSL from the shoreline of the area's many inlets, arms, and fjords. The runway parallels the Tongass Narrows and there is upsloping terrain at both runway ends. To the west, terrain rises to 2461 feet MSL within 3 NM. Across the Narrows to the east-northeast, terrain on Revillagigedo Island rises above 3000 feet MSL within 4 NM.</p> <p>Caution: Many general aviation aircraft are equipped with ADS-B and their transponders may not be detected by TCAS.</p> <p>Snow and ice removal are available only during hours of attendance. Surface condition reports reflect airport conditions during attended hours.</p> <p>Birds and deer are present on and in the airport vicinity.</p> <p>Expect heavy general aviation activity in the area, especially in the summer.</p>				
<b>NOT FOR NAVIGATION</b>				
<p>FAR Part 93 designates this location as a High Density Traffic Airport; special rules and requirements are in effect.</p>				
<b>WEATHER</b>				
Seasonal data represents average monthly values				
<b>Remarks:</b>				
Obstruction to visibility, mostly due to fog which is short in duration, averages 12 days per month. Less than 3 thunderstorms occur annually. Overcast ceilings is the predominant sky condition throughout the year.				
	<b>Dec-Feb</b>	<b>Mar-May</b>	<b>Jun-Aug</b>	<b>Sep-Nov</b>
<b>① Precip Amount</b>	12.3 in 312 mm	9.9 in 251 mm	7.5 in 191 mm	16.1 in 409 mm
<b>Snowfall</b>	11 in 28 cm	3 in 8 cm		1 in 3 cm
<b>IMC</b>	13%	8%	11%	13%
<b>Prevailing Winds</b>	ESE-14 kts	SE-12 kts	<b>② SSE-9 kts</b>	<b>③ SE-13 kts</b>
<b>Low Temp</b>	30°F -1°C	37°F 3°C	50°F 10°C	41°F 5°C
<b>High Temp</b>	40°F 4°C	49°F 9°C	63°F 17°C	51°F 11°C
<p><b>①</b> Annual precipitation totals 137.4 in (349 cm).</p> <p><b>②</b> Winds are from the southeast in August.</p> <p><b>③</b> Winds are from the east-southeast in November.</p>				

**TREASURE CHEST** (AA16) PVT 5 NNW UTC-9(-8DT) N60°37.49' W151°17.67'  
 125 TPA-825(700) NOTAM FILE Not insp.  
**RWY 16-34:** 2700X100 (GRVL)

SEWARD

**RWY 34:** Rgt tfc.

**RWY 02-20:** 1370X100 (GRVL)

**AIRPORT REMARKS:** Unattended. Caution: Rwy 16-34 winter ops snow covered not maintained, ski ops at your own risk—call 907-394-3579 for cond rep.

**AIRPORT MANAGER:** 907-394-3579

**COMMUNICATIONS:** UNICOM 122.7

**COMM/NAV/WEATHER REMARKS:** Ops departing or arriving tfc must announce intentions to Salamatoff/Arness tfc on lcl UNICOM freq 122.7. Ops departing or arriving tfc must call Kenai twr 121.3 in Class D/E airspace for transition to Treasure Chest Airpark Rwy 16-34 and/or Rwy 02-20.

**KENAI RIVER AIRPARK** (See SOLDOTNA on page 235)

## KETCHIKAN

**KETCHIKAN (TEMSCO H) HELIPORT** (17AK) PVT 4 NW UTC-9(-8DT) N55°22.98' W131°44.10' **KETCHIKAN**  
 20 NOTAM FILE

**HELIPAD H1:** H150X50 (CONC) S-6

**SERVICE:** S2

**HELIPORT REMARKS:** Unattended. Private heliport except for emergencies prior permission for use is required. Ctc TEMSCO on 130.3 or phone 907-225-5141 for ldg permission. Helicopter ldg, tkof and opr in seaplane tiedown and pullout area prohibited. Ldg and tkof of wheeled airplanes prohibited. Located NE corner of Peninsula Point Pullout.

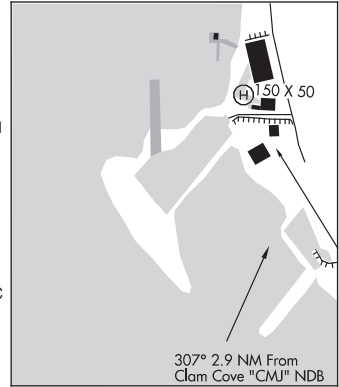
**AIRPORT MANAGER:** 907-225-5141

**RADIO AIDS TO NAVIGATION:** NOTAM FILE KTN.

**CLAM COVE NDB (HW)** 396 CMJ N55°20.53'  
 W131°41.45' 307° 2.9 NM to fld. 46/21E.

NDB unusable:  
 Byd 15 NM

**COMM/NAV/WEATHER REMARKS:** LC to Ketchikan FSS dial 225-9481. For a LC to Juneau FSS dial 789-7380.



**KETCHIKAN HARBOR SPB** (5KE) 0 W UTC-9(-8DT) N55°20.67' W131°39.81' **KETCHIKAN**

00 AOE LRA NOTAM FILE KTN

**WATERWAY E-W:** 3893X1000 (WATER)

**SEAPLANE REMARKS:** Attended daylight hrs. Special Air Traffic Rules-Part 93 and Standard VFR arr and dep procedures and pattern information, see Regulatory Notices. Numerous air taxi ops in harbor. Ctc Ketchikan Radio 123.6 prior to arriving for traffic advisories. Boats, ships and log debris in harbor. One small public dock avbl.

**COMMUNICATIONS:** CTAF 123.6

**RADIO AIDS TO NAVIGATION:** NOTAM FILE ANN.

**ANNETTE ISLAND (H) VOR/DME** 117.1 ANN Chan 118  
 N55°03.62' W131°34.70' 329° 17.3 NM to fld. 184/21E.

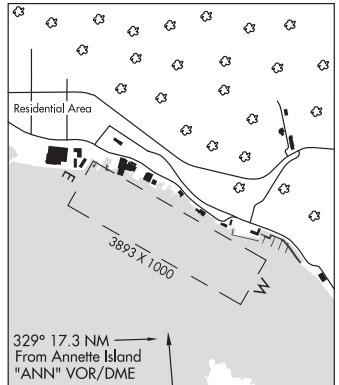
VOR unusable:

245°-255° byd 19 NM blo 6,000'  
 295°-305° byd 20 NM blo 9,000'  
 325°-335° byd 18 NM blo 6,000'  
 336°-350° byd 24 NM blo 14,000'  
 351°-099° byd 16 NM blo 17,500'  
 351°-099° byd 20 NM

DME unusable:

245°-255° byd 19 NM blo 6,000'  
 295°-305° byd 20 NM blo 9,000'  
 325°-335° byd 18 NM blo 6,000'  
 336°-350° byd 24 NM blo 14,000'  
 351°-099° byd 16 NM blo 17,500'  
 351°-099° byd 20 NM

**COMM/NAV/WEATHER REMARKS:** LC to Ketchikan FSS dial 225-9481. For a toll free call to Juneau FSS dial 1-800-WX-BRIEF.



# NOT FOR NAVIGATION

AK, 12 AUG 2021 to 7 OCT 2021