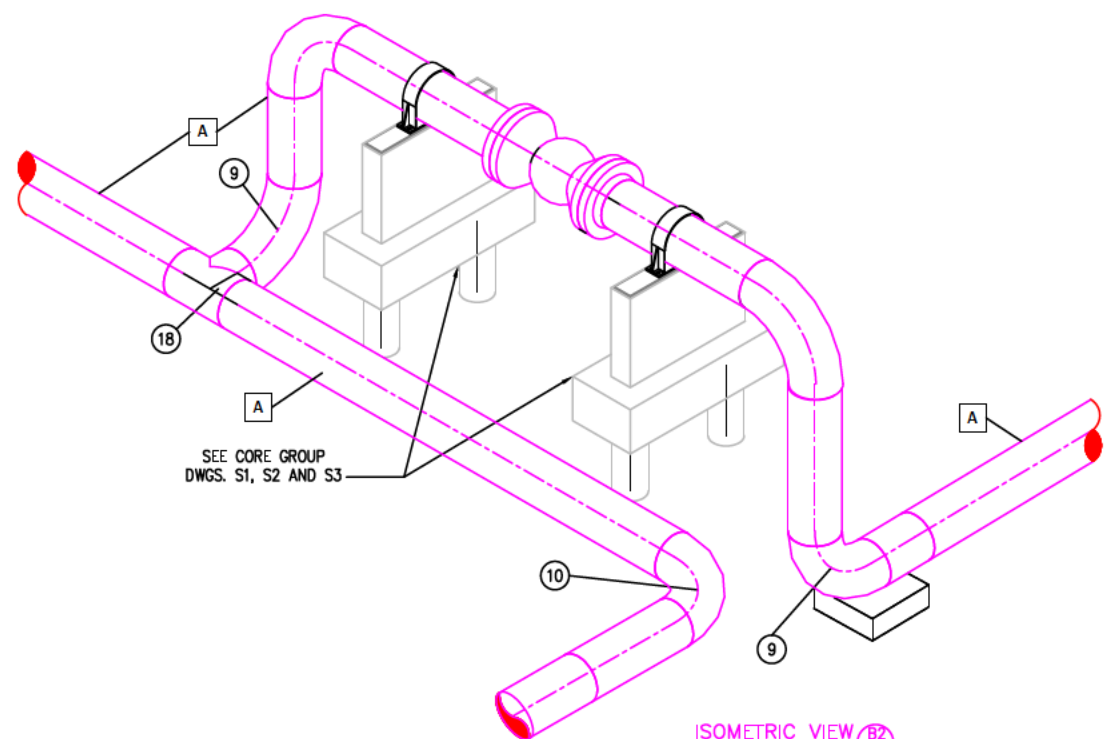
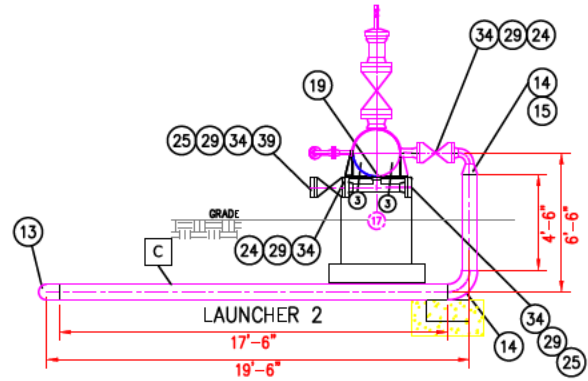


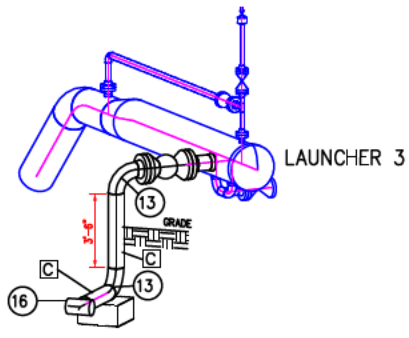
ELEVATION A2
SCALE 1/4"=1'-0"



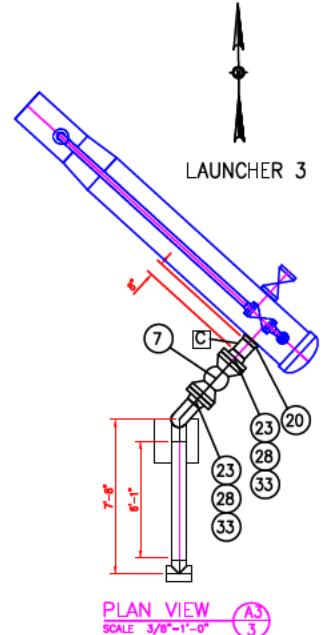
ISOMETRIC VIEW B2
SCALE N.T.S.



ELEVATION C2
SCALE 1/4"=1'-0"



ISOMETRIC VIEW A3
SCALE N.T.S.



PLAN VIEW A3
SCALE 3/8"=1'-0"

BILL OF MATERIAL	
Item	Description
1	FEET PIPE, 24.00-INCH OD, X 0.375-INCH WALL, API 5L-X52, ERW DR DSAM, FEB LINE PIPE, FBC, DR, L
2	FEET PIPE 8.625-INCH OD, X 0.322-INCH WALL, X-42, ERW, FEB LINE PIPE, FBC, DR, L
3	FEET PIPE, 4.500-INCH OD, X 0.237-INCH WALL, X-42, ERW, FEB LINE PIPE, BARE, SRL
4	EACH NIPPLE 1 X 4 STD CS CW TBE
5	EACH PLUG/CS BAR STOCK, THRD
6	VALVE
6	VALVE, BALL, FULL PORT, SS BALL, 24" ANSI 600# RF, API SPEC 608, BOLTED BODY CARBON STEEL MATERIAL, GEAR OPERATED
7	VALVE, BALL, STD. PORT, 8-INCH, ANSI 600# RF, API SPEC 609, BOLTED BODY CARBON STEEL MATERIAL, GEAR OPERATED
8	VALVE, BALL THD 1 CS RTFE RP 3PC 2000# APOLLO 93-145-01
9	FITTINGS
9	EACH ELL, WELD, 24" 90 DEG, LONG RADIUS, 0.375" WALL, MSS-SP-75-WPHY52, ANSI B16.9
10	EACH ELL, WELD, 24" 90 DEG, 30, 0.375" WALL, MSS-SP-75-WPHY52, ANSI B16.9
11	EACH ELL, WELD, 24" 45 DEG, 30 RADIUS, 0.375" WALL, MSS-SP-75-WPHY52, ANSI B16.9
12	EACH ELL, WELD, 18" 90 DEG, STD. RADIUS, 0.375" WALL, MSS-SP-75-WPHY52, ANSI B16.9
13	EACH ELL, WELD, 8" 90°, STD. RADIUS, SCH 40, 0.322" WALL, ASTM A-234 WPB, ANSI B16.9
14	EACH ELL, WLD 4 X 237V STD 90 DEG LR CS WPB
15	EACH REDUCER 8 X 4 STD BLK CS CONC WELD SAE234WPB
16	EACH TEE, WLD 8 X 322V STD CS WPB
17	EACH TEE, WLD 4 X 237V STD CS WPB
18	EACH TEE, WELD 24", 0.375" WALL, MSS-SP-75-WPHY52, ANSI B16.9, WITH PIG BARS
19	EACH WELDOLET, 4-INCH DN 26-INCH, XH, MSS-SP-75, Y52
20	EACH WELDOLET, 8-INCH DN 24-INCH, XH, MSS-SP-75, Y52
21	EACH FLANGE, 24-INCH, RF, VN, ANSI 600#, 23.00-INCH BORE, ASTM A-105, ANSI B16.5
22	EACH FLANGE, 12-INCH, RF, VN, ANSI 600#, 7.981-INCH BORE, ASTM A-105, ANSI B16.5
23	EACH FLANGE, 8-INCH, RF, VN, ANSI 600#, 7.981-INCH BORE, ASTM A-105, ANSI B16.5
24	EACH FLANGE VN 4 CS RF ANSI 600 STD BORE
25	EACH FLANGE BLIND 4 CS RF ANSI 600
26	EACH GASKET, 24-INCH, 600# ANSI, NON-ASBESTOS SPIRAL WOUND, FLEXITALLIC CG
27	EACH GASKET, 12-INCH, 600# ANSI, NON-ASBESTOS SPIRAL WOUND, FLEXITALLIC CG
28	EACH GASKET, 8-INCH, 600# ANSI, NON-ASBESTOS SPIRAL WOUND, FLEXITALLIC CG
29	EACH GASKET, 4-INCH, 600# ANSI, NON-ASBESTOS SPIRAL WOUND, FLEXITALLIC CG
30	EACH ECL, WELD STD ASTM A-105
31	EACH BOLT, 1.875-INCH X 14.50-INCH LG, 37 STUDS, FOR 24-INCH, 600# FLNG, W/ 2 HEX NUTS, ASTM A-193 AND A-194
32	EACH BOLT, 1.250-INCH X 9.000-INCH LG, 37 STUDS, FOR 12-INCH, 600# FLNG, W/ 2 HEX NUTS, ASTM A-193 AND A-194
33	EACH BOLT, 1.125-INCH X 7.75-INCH LG, 37 STUDS, FOR 8-INCH, 600# FLNG, W/ 2 HEX NUTS, ASTM A-193 AND A-194
34	EACH BOLT, 7/8-INCH X 6.00-INCH LG, 37 STUDS, FOR 4-INCH, 600# FLNG, W/ 2 HEX NUTS, ASTM A-193 AND A-194
35	MISC.
36	EACH SGL 24" STOPPLE WITH 12" BYPASS PER ATTACHED QUOTATION FROM T3W.
37	FEET PIPE, 2.000-INCH OD, STD. PIPE
38	EACH ELL, WLD 2 X 388V STD 90 DEG LR CS WPB
39	EACH WELDOLET, 2-INCH DN 24-INCH, XH, MSS-SP-75, Y52
39	EACH VALVE, GATE, STD. PORT, 4-INCH, ANSI 600# RF,

!! CAUTION !!
THIS DRAWING IS FOR REFERENCE ONLY. GAS LINE LOCATIONS AND OTHER MEASUREMENTS SHOWN ON THIS MAP ARE APPROXIMATE. ATMOS DOES NOT GUARANTEE THE ACCURACY OF THIS MAP NOR DOES ATMOS ASSUME ANY RESPONSIBILITY OR LIABILITY FOR RELIANCE THEREON. ANY RELIANCE ON THIS INFORMATION IS DONE AT YOUR OWN RISK.

PIPE SPECIFICATIONS		DESIGN DATA				TESTING REQUIREMENTS				COATING		FIELD				
MARK NUMBER	O.D. INCHES	WALL THICKNESS INCHES	PIPE GRADE	CLASS LOC	DESIGN FACTOR	MAX PRESS BARLOW W/ FACTOR	DESIGN PRESS P.S.I.G.	EXISTING WACP P.S.I.G.	HOOP STRESS S.M.Y.S.	HOOP STRESS X S.M.Y.S.	TEST PRESS P.S.I.G.	TEST DUR. HRS	X-RAY %	COATING SPECIFICATIONS	JOINT COATING	
A	24.000	0.375	52,000	1	0.50	812	800	1625	800	25600	49,237	1462	8 HRS	100%	PAINTED	PAINTED
B	12.750	0.375	42,000	1	0.50	1235	800	2470	800	13600	32,387	2223	8 HRS	100%	PAINTED	PAINTED
C	8.625	0.322	42,000	1	0.50	1568	800	3136	800	10714	25,511	1462	8 HRS	100%	PAINTED	PAINTED
D	4.500	0.237	42,000	1	0.50	2212	800	4424	800	7994	18,082	1462	8 HRS	100%	PAINTED	PAINTED

COLLIN

COUNTY

TEXAS

REV.	DESCRIPTION	BY	DATE	CHK'D	APP'D	REV.
A	AS BUILT		06/09			
1	TURN FINAL 180.12171 -INSTALLATION LAUNCHER 1 & 2	JVD	02/15			

BY	DATE	CHK'D	APP'D	DESCRIPTION

CHECKED	APPROVED	DATE	DATE

AFE:	JOB:	YR
180.12171	07220	CONSTRUCTION

THIS DRAWING IS THE PROPERTY OF TRITEX TECHNOLOGIES, INC. DALLAS, TEXAS AND IS NOT TO BE REPRODUCED OR USED FOR ANY OTHER PROJECT OR PURPOSE OTHER THAN THE ONE FOR WHICH IT IS ISSUED.

TRITEX TECHNOLOGIES, INC.
4611 LANGLAND RD, SUITE 104
DALLAS, TEXAS 75244



LINE D17(24")
LAUNCHER 2 & 3
ELEVATIONS

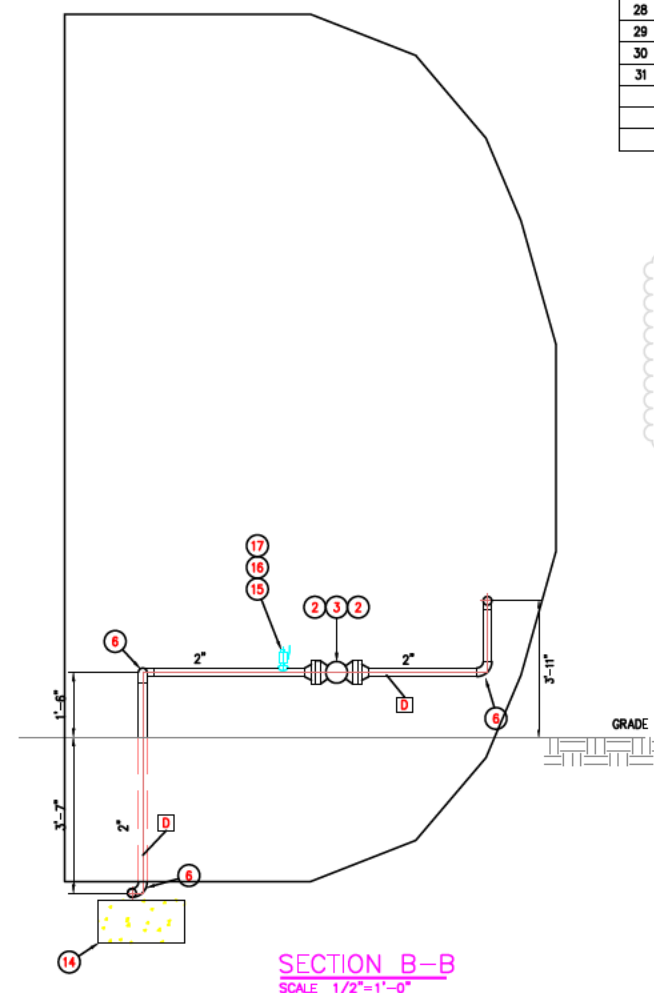
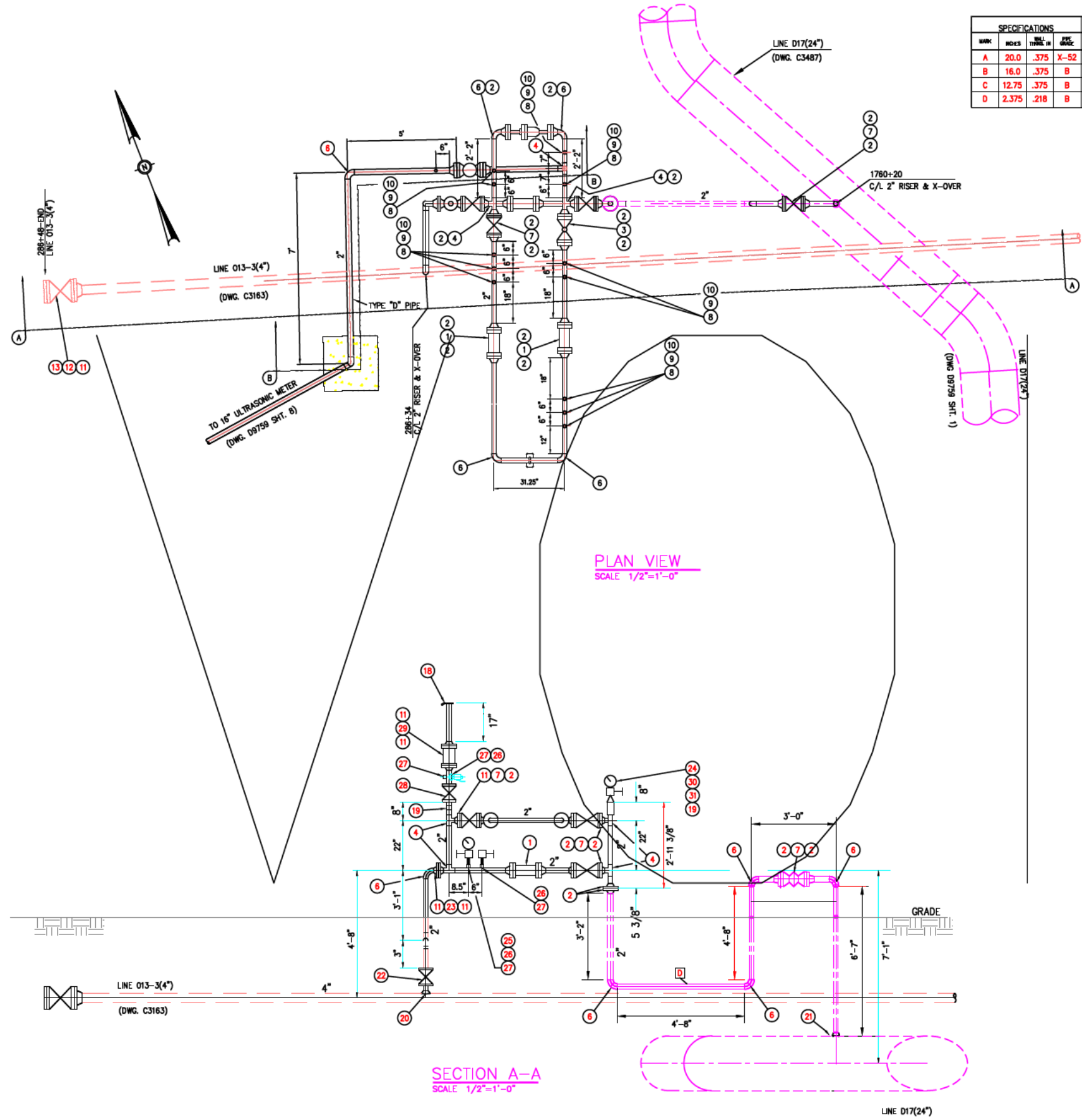
REFERENCE DWG.
LINE D17(24") GENERAL LAYOUT D9759, SHT. 1
ALG. SHT. H2444

UPDATE DATE: 7-Feb-20
FILE: D9759.DWG
SCALE: 1/2"=1'-0"
DRAWING NUMBER: D9759
SHEET 3 OF 8 SHTS.

PLOTTED: 2/10/2020 10:38 AM BY: foreman, jeff I

LIST OF MATERIALS	
ITEM	DESCRIPTION
1	2" MOONEY, SINGLE PORT, REGULATOR, 600#A.N.S.I. W/ 50% CORE
2	2" W.N. FLG., 600#A.N.S.I., STD. BORE, GR. B
3	2" F.B.V., 600#A.N.S.I.
4	2" TEE, STD. WT., GR. B
5	2" PIPE SUPPORT-PER DWG. STD. 71-01-3, TYPE I
6	2" WLD. ELL., STD. WT., GR. B
7	2" F.P.V., 800# G.W.P.
8	2"x1/2" THREDOLET, STD. WT., GR. B
9	1/2"x1/4" S.P.V., 2000#G.W.P.
10	1/4" NPT BULL. PLUG, HEX-HEAD, X-STG.
11	4" W.N. FLG.-300# A.N.S.I.
12	4" ROCKWELL F.P.V.-500# G.W.P.
13	4" BLIND FLG.-300# A.N.S.I.
14	2' x 2' x 1' THICK CONC. SUPPORT BLOCK
15	WELDOLET 1" ON 36"-2, 3000#, ASTM-A-105, THREADED
16	1/2" S.B.V., 2000# WOG
17	1/2" HEX BULL. PLUG, ASTM-A-105
18	2" ANTHES WEATHER CAP
19	2" COLLAR, 3000#
20	4" x 2" WELDOLET, STD. WT.
21	24" x 2" WELDOLET, STD. WT.
22	2" SMITH S.G.V. FIG.NO.888, 2000# G.W.P., FULL OPENING
23	2-2" W.N.FLG., 300# A.N.S.I.,
24	IND. PRESS. GA., 0-1000#
25	IND. PRESS. GA., 0-600#
26	1/2" x 1/4" A.G.CO. H1C24# W/SET FOR 2" 300# A.N.S.I. FLG.
27	2" x 1/2" THREDOLET, S. 3000# G.W.P.
28	2" S.P.V., 500# G.W.P. W/LOCKING DEVICE(LOCK OPEN)
29	RELIEF VALVE, 2" GROVE 83 (100% CORE, STANDARD TUBE 720#)
30	1/4" NEEDLE VAL.
31	2" x 1/4" RED., 3000#

MARK	INCHES	THICKNESS	SPEC. GRADE	CLASS	WELD	DESIGN DATA				TESTING REQUIREMENTS			COATING SPECIFICATIONS	FIELD JOINT COATING
						WELD	WELD	WELD	WELD	WELD	WELD	WELD		
A	20.0	.375	X-52	3	.5	1950	800	800	41.0	1200	8	100	TUPS-FBE-98	POWERCETE J
B	16.0	.375	B	3	.5	1642	800	800	48.7	1200	8	100	TUPS-FBE-98	POWERCETE J
C	12.75	.375	B	3	.5	2058	800	800	38.9	1200	8	100	TUPS-FBE-98	POWERCETE J
D	2.375	.218	B	3	.5	6426	800	800	12.4	1200	8	100	TUPS-FBE-98	POWERCETE J



!! CAUTION !!

THIS DRAWING IS FOR REFERENCE ONLY
GAS LINE LOCATIONS AND OTHER MEASUREMENTS SHOWN
ON THIS MAP ARE APPROXIMATE. ATMOS DOES NOT
GUARANTEE THE ACCURACY OF THIS MAP NOR DOES ATMOS
GAS ASSUME ANY RESPONSIBILITY OR LIABILITY FOR
RELIANCE THEREON. ANY RELIANCE ON THIS INFORMATION
IS DONE AT YOUR OWN RISK.

REFERENCE DWG.
LINE 013-3 C3163
LINE D17 C3487
GEN. LAYOUT D9759-SHT. 1
ULTRASONIC MTR. D9759-SHT. 5
AUG. SHT. H2444



REGULATOR STATION INSTALLATION
ON LINE D17(24") AT STA. 1760+20
X-ING OVER TO
LINE 013-3(4") AT STA. 286+34

T. F. 180.12171-Launcher 1 & 2	JVD	2/5/15	PROJ. ENGR.: CARLOS SANCHEZ	DATE:
180.12216-Replace Relief Valve	J.F	12/3/13		3/14/94
CONSOLIDATE DWG. G4044	J.F	9/7/11		
ADD REG. TIE IN TO ULTRASONIC METER, ER0154197U	GZ	2/02	DRAWN BY: C.C.R.	
PG4728 TURN FINAL 91-2947, 94-2651	RCM	10/26/00	PROJECT No. 180.10753	DSMR No. 926-01
REVISION	BY	DATE	SHT. No. 4 of 7	DRAWING No. D9759

PLOTTED: 2/10/2020 10:38 AM BY: foreman_jeff

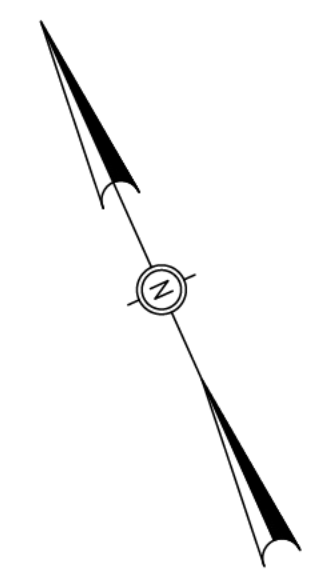
COLLIN

COUNTY

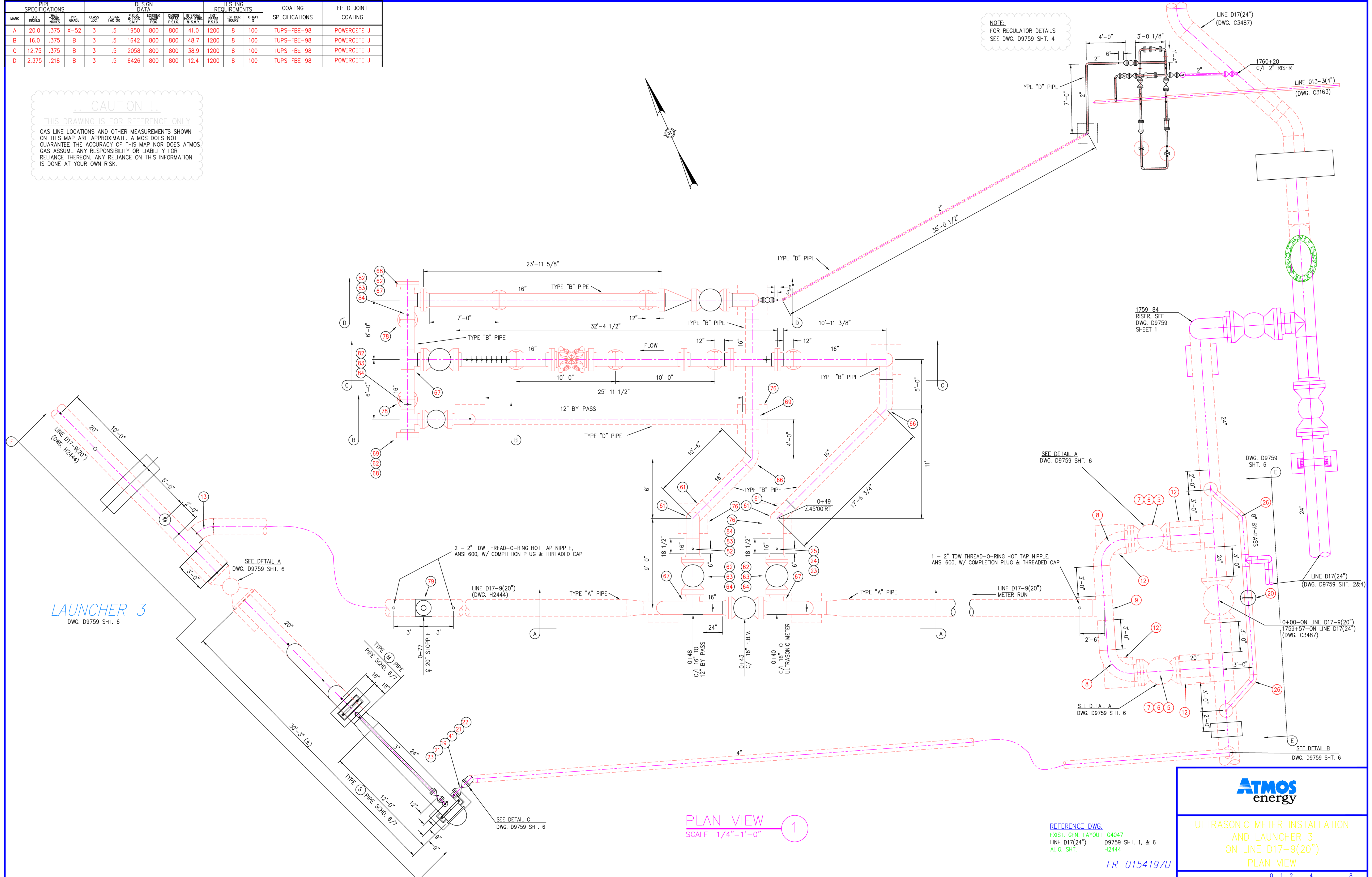
TEXAS

MARK	PIPE SPECIFICATIONS			DESIGN DATA						TESTING REQUIREMENTS			COATING SPECIFICATIONS	FIELD JOINT COATING
	OD INCHES	WALL THICKNESS INCHES	PIPE GRADE	CLASS LOC	DESIGN FACTOR	D SLUG W/ TOP S.M.Y.	EXISTING WAD P.S.G.	DESIGN PRESS. P.S.G.	INTERNAL TOP S.P.S. X S.M.Y.	TEST PRESS. P.S.G.	TEST DUR. HOURS	X-BAY #		
A	20.0	.375	X-52	3	.5	1950	800	800	41.0	1200	8	100	TUPS-FBE-98	POWERCETE J
B	16.0	.375	B	3	.5	1642	800	800	48.7	1200	8	100	TUPS-FBE-98	POWERCETE J
C	12.75	.375	B	3	.5	2058	800	800	38.9	1200	8	100	TUPS-FBE-98	POWERCETE J
D	2.375	.218	B	3	.5	6426	800	800	12.4	1200	8	100	TUPS-FBE-98	POWERCETE J

!! CAUTION !!
 THIS DRAWING IS FOR REFERENCE ONLY.
 GAS LINE LOCATIONS AND OTHER MEASUREMENTS SHOWN ON THIS MAP ARE APPROXIMATE. ATMOS DOES NOT GUARANTEE THE ACCURACY OF THIS MAP NOR DOES ATMOS ASSUME ANY RESPONSIBILITY OR LIABILITY FOR RELIANCE THEREON. ANY RELIANCE ON THIS INFORMATION IS DONE AT YOUR OWN RISK.



NOTE:
 FOR REGULATOR DETAILS
 SEE DWG. D9759 SHT. 4



LAUNCHER 3
 DWG. D9759 SHT. 6

PLAN VIEW 1
 SCALE 1/4" = 1' - 0"

REFERENCE DWG.
 EXIST. GEN. LAYOUT G4047
 LINE D17(24") D9759 SHT. 1, & 6
 AUG. SHT. H2444

ER-0154197U

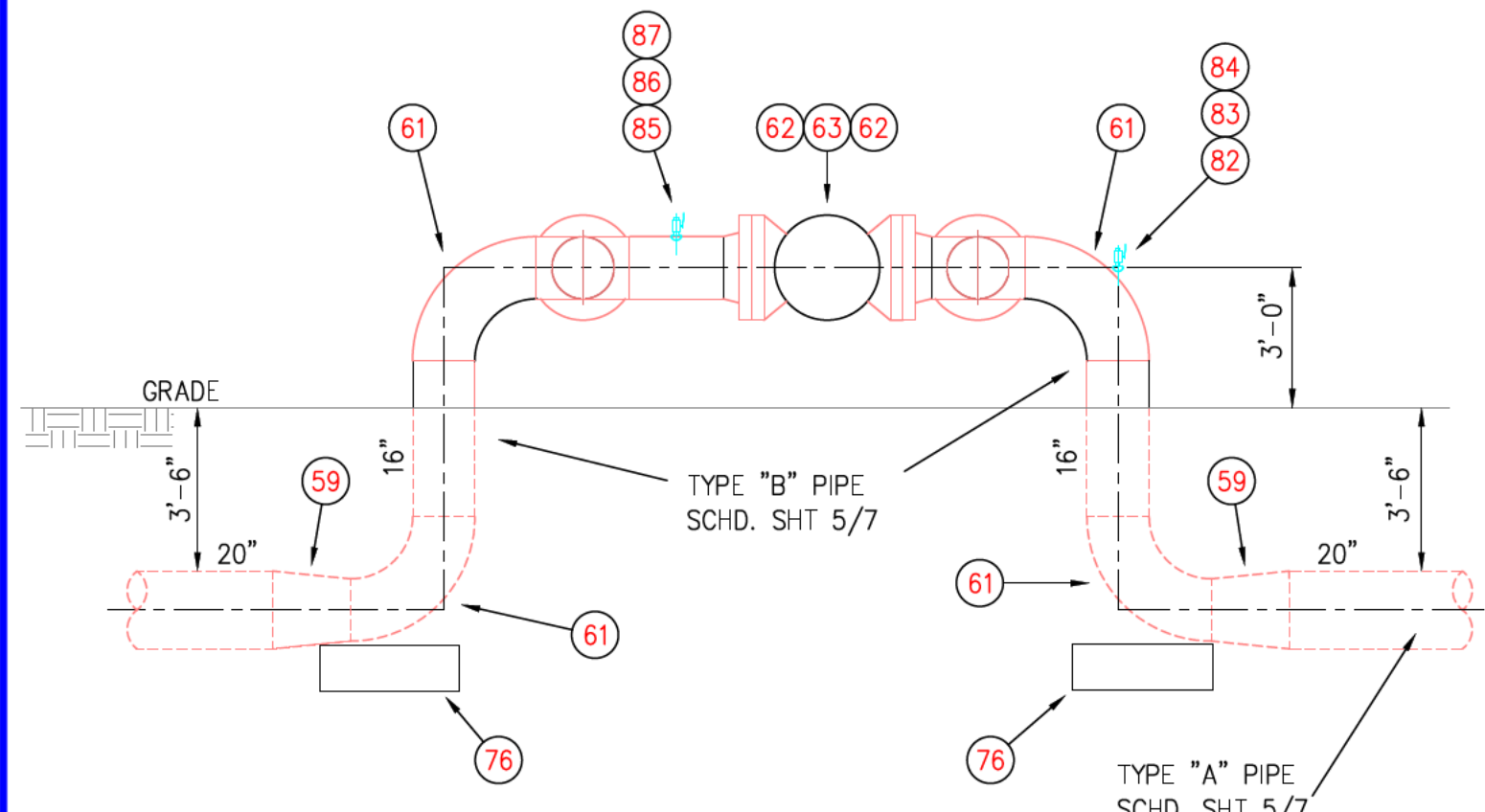


ULTRASONIC METER INSTALLATION
 AND LAUNCHER 3
 ON LINE D17-9(20")
 PLAN VIEW

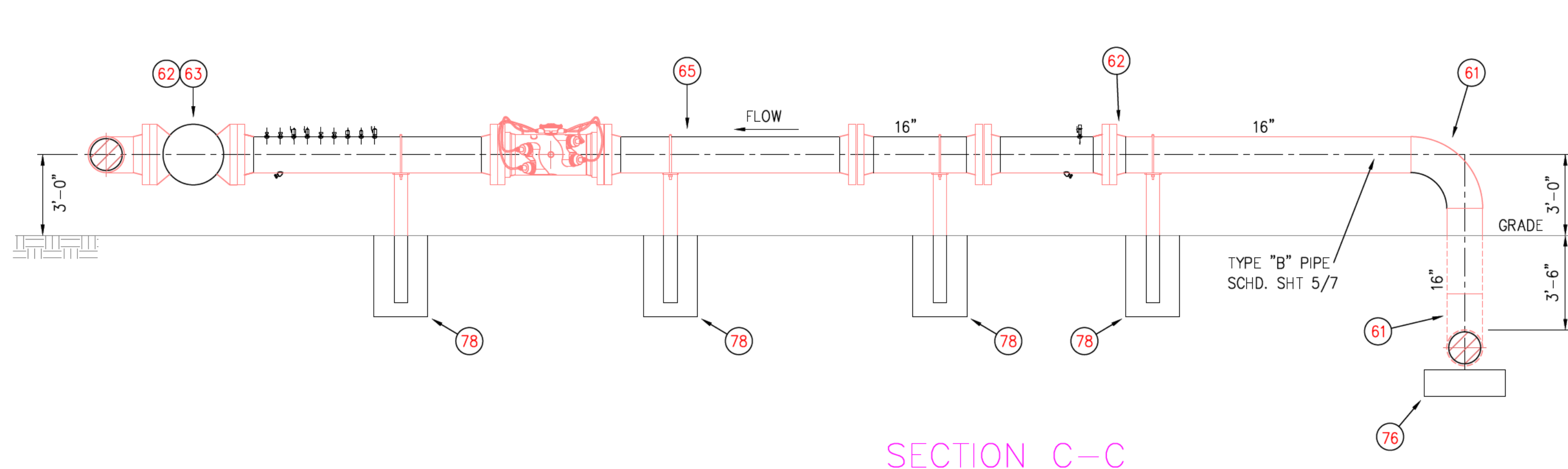
1/4" = 1' - 0" 0 1 2 4 8
 SCALE FEET

180197U	JV	02/23	TURN FINAL - LAUNCHER 1 & 2	ER 0154197U	GZ	11/02	TURN FINAL - ADD ULTRASONIC METER	REVISION	BY	DATE	DRAWN: R.C.M.	DATE: 7-24-2001	DSWR#: 926-01
											PROJ. ENGR.: JERRY WHITE	DWG NO. D9759	SHT: 5 of 7

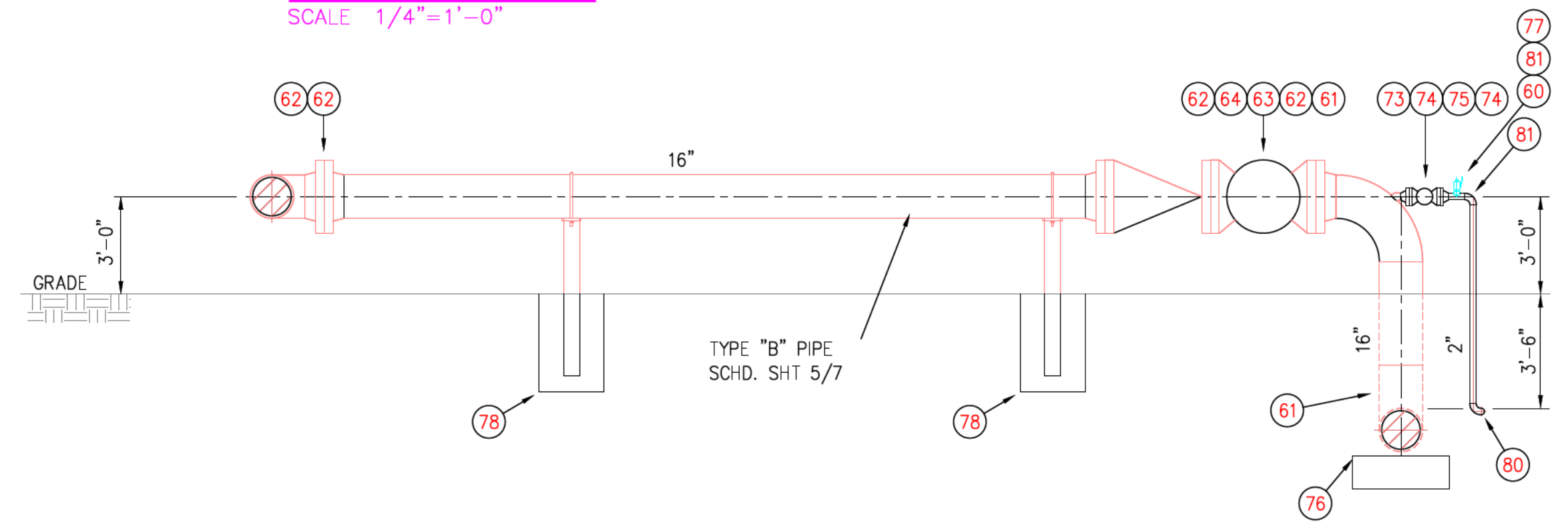
PROJECT MANAGER: ROGER CHAPIN



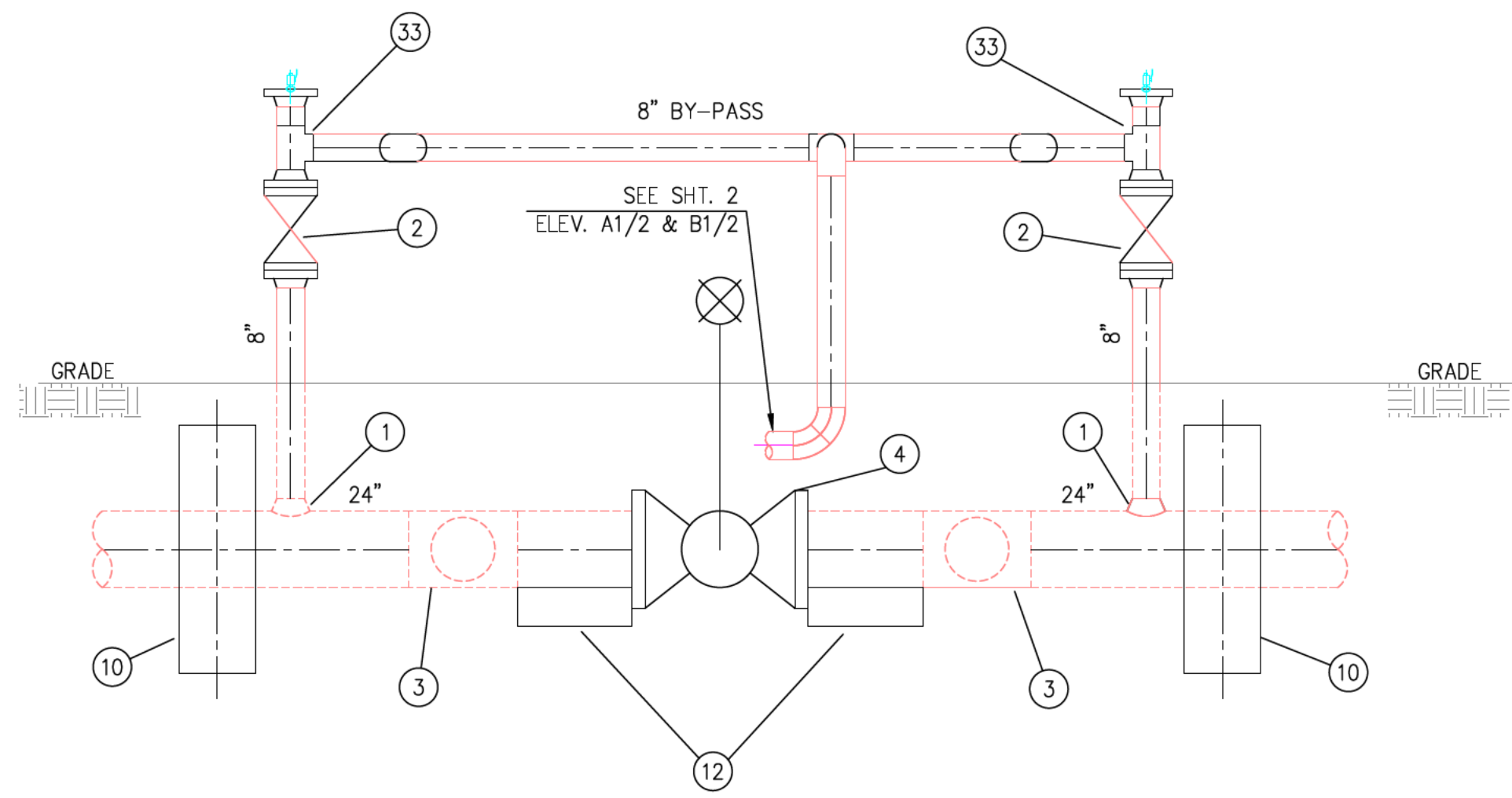
SECTION A-A
SCALE 1/4"=1'-0"



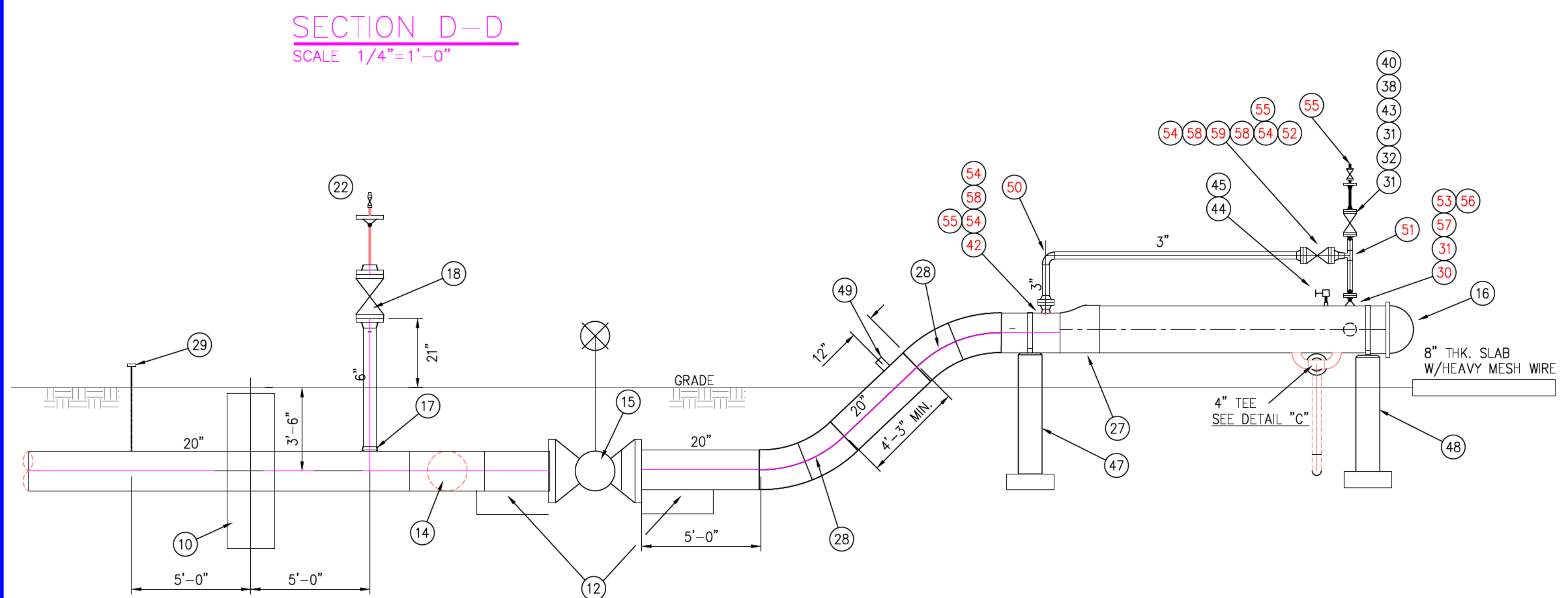
SECTION C-C
SCALE 1/4"=1'-0"



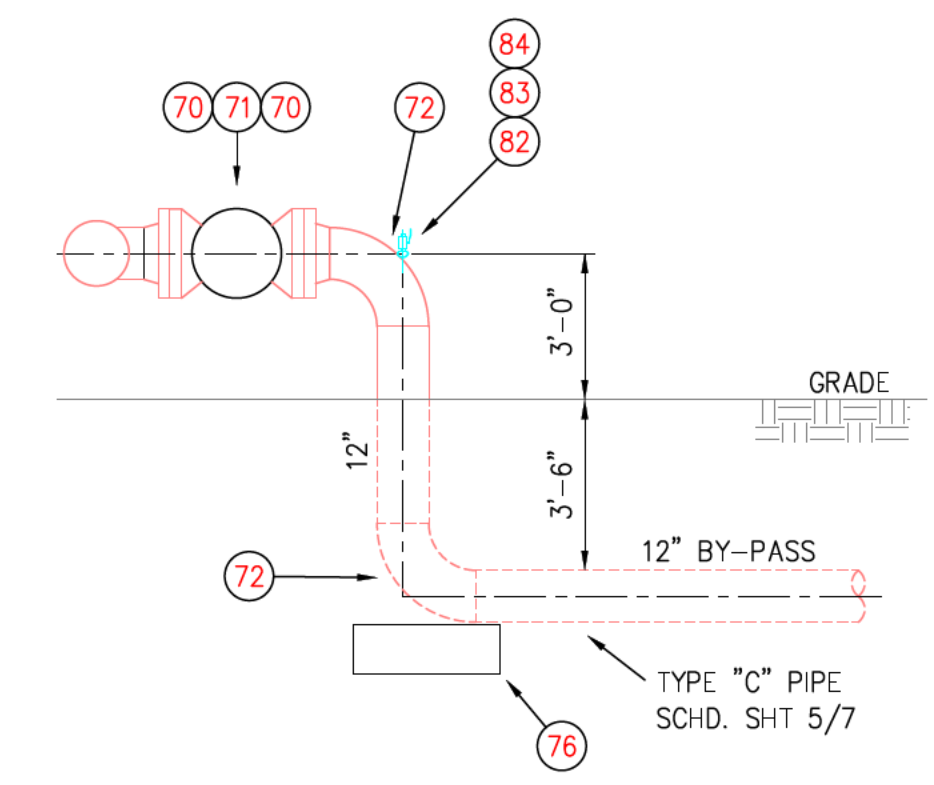
SECTION D-D
SCALE 1/4"=1'-0"



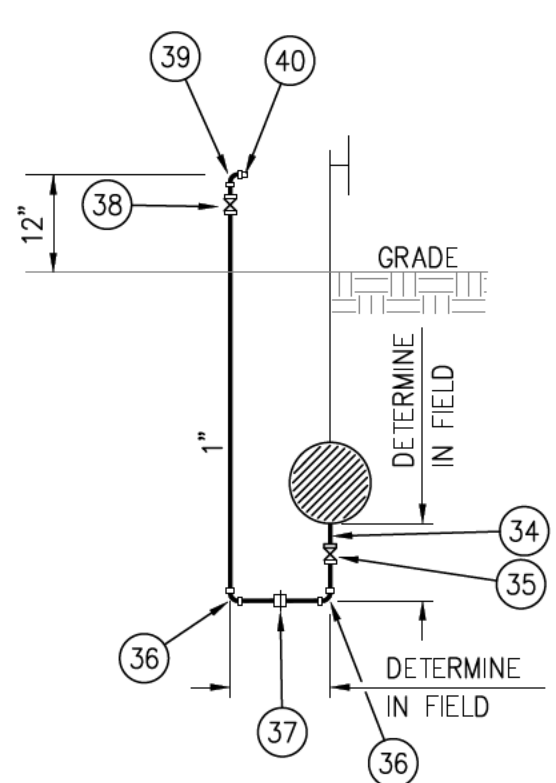
SECTION E-E
SCALE 1/4"=1'-0"



SECTION F-F
SCALE 1/4"=1'-0"

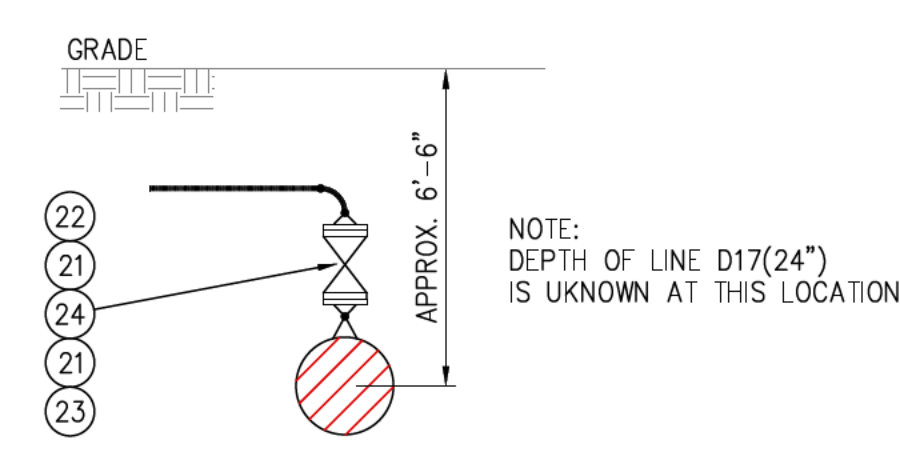


SECTION B-B
SCALE 1/4"=1'-0"



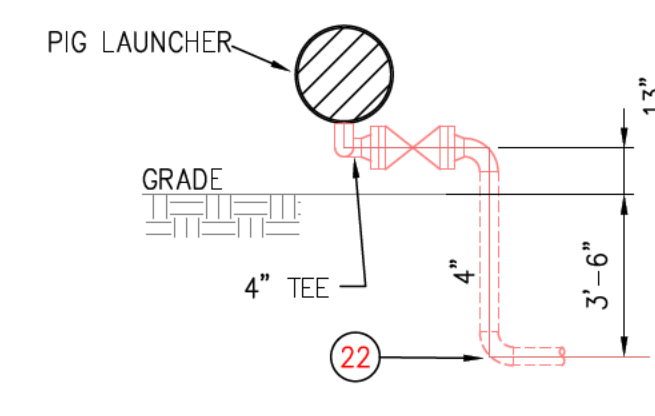
DETAIL A
SCALE 1/4"=1'-0"

BLEED LINE ASSEMBLY FOR BELOW GROUND INSTALLATION TYPICAL 4 PLACES



DETAIL B
SCALE 1/4"=1'-0"

NOTE: DEPTH OF LINE D17(24") IS UNKNOWN AT THIS LOCATION.



DETAIL C
SCALE 1/4"=1'-0"

LIST OF MATERIALS CONT.		LIST OF MATERIALS	
ITEM	DESCRIPTION	ITEM	DESCRIPTION
51	2" WLD. TEE, STD. WT., ASTM A-234 GR WPB	1	24" X 8" WELDOLET, STD. WT. X STD. WT.,
52	3"x2" WLD. RED. STD., ASTM A-234 GR WPB	2	GRD. Y-52 (W/SCRAPER BARS)
53	FLANGE, 2", RF, WN, 600# ANSI, 2.067" BORE (STD. WT.),	3	8", 800# G.W.P. BLOW OFF PER DWG. STD. 11-02-1
54	ASTM A-105, ANSI B16.5	4	MODIFIED W/TEE FOR EQUALIZER LINE
55	FLANGE, 3", RF, WN, 600# ANSI, 2.067" BORE (STD. WT.),	5	24"x20" WLD. RED. TEE, STD. WT. GR. Y-60(W/ SCRAPER BARS)
56	ASTM A-105, ANSI B16.5	6	24" W.E. X W.E. B.V. 600# A.N.S.I., TAR SET COATED,
57	BOLT, STUD, 3/4"x4 3/4", ALLOY STEEL, ASTM A-193 GR. B7 C/W	7	GEAR OPERATED WITH EXTENSION
58	TWO ASTM A-194 TYPE 2H HEAVY HEX NUTS,	8	20" W.E. X F.E. B.V. 600# A.N.S.I., TAR SET COATED, GEAR
59	(FOR 3", 600# RF FLANGE), (8 BOLT PER SET)	9	OPERATED WITH EXTENSION
60	TWO ASTM A-194 TYPE 2H HEAVY HEX NUTS,	10	INSULATING SET FOR 20",600# A.N.S.I. FLG.
61	(FOR 2", 600# RF FLANGE), (8 BOLT PER SET)	11	20" W.N. FLG. 600# A.N.S.I., STD. BORE, GRD F-60
62	BOLT, STUD, 5/8"x4", ALLOY STEEL, ASTM A-193 GR. B7 C/W	12	20" WLD. ELL, STD. WT., GRD. Y-60
63	TWO ASTM A-194 TYPE 2H HEAVY HEX NUTS,	13	24" CONC. ANCHOR BLK. W/SPLIT RING & SLEEVE PER DWG.
64	(FOR 2", 600# RF FLANGE), (8 BOLT PER SET)	14	STD 71-41-2 & 72-41-1
65	GASKET, 2", 600# ANSI, NON-ASBESTOS SPIRAL WOUND GASKET,	15	20" W.E. X W.E. B.V., 600# A.N.S.I., TAR SET COATED,
66	FLEXITALLIC CG OR EQUAL.	16	GEAR OPERATED WITH EXTENSION - OPEN POSITION
67	GASKET, 3", 600# ANSI, NON-ASBESTOS SPIRAL WOUND GASKET,	17	24" HINGED CLOSURE, 600# A.N.S.I., GR. Y-52
68	FLEXITALLIC CG OR EQUAL.	18	(W/SCRAPER BARS)
69	3" F.G.V.-600# ANSI	19	20" X 6" WELDOLET, STD. WT. X STD. WT., GRD Y-60
70	20"x16" CONC. WLD. RED., STD. WT., 0.375" WT.,	20	GEAR OPERATED WITH EXTENSION - OPEN POSITION
71	STD 71-41-2 & 72-41-1	21	6" 800# G.W.P. BLOW OFF PER DWG. STD 11-02-1
72	MSS-SP-75, WPHY-52 OR BETTER	22	4" F.P.V. 800# G.W.P.
73	ELBOWET 1" ON 36"-2, 3000#, ASTM-A-105, THREADED	23	8" PIPE SUPPORT PER DWG. STD 71-01
74	16" 90° WLD. ELL, LR, 0.375" WT., STD. WT., ASTM-A-34 WPB	24	4" W.N. FLG. 600# A.N.S.I. GR. F-42 STD. BORE
75	16" W.N. FLG., RF, 600# ANSI, 15.250" BORE, STD. WT.,	25	4" WLD. ELL, STD. WT., GRD B
76	ASTM-A-105-75-ANSI B16.5	26	24"x4" WELDOLET STD. WT. Y-52
77	16" F.B.V., RF, 600# ANSI, API SPEC. 6D, BOLTED OR CAST	27	4" F.P.V. 800# G.W.P. TAR SET COATED
78	BODY CONST., GEAR OPER., FULL OPEN PORT BALL	28	4" WLD. CAP, STD. WT., GRD B
79	16" CHECK VALVE, RF, 600# ANSI, API SPEC. 6D, BOLTED	29	8" 45" WLD. ELL, STD. WT., GR. B
80	BONNET, CAST BODY CONST., CONVENTIONAL SWING CHECK	30	24" X 20" ECCENTRIC WLD. RED., STD. WT., GR. Y-52
81	16" ULTRASONIC METER TUBE, 600# ANSI, PER DWG. STD.	31	20", 3 DIA. RADIUS, 45" WLD. ELL, STD. WT., GR. Y-52
82	21-03-1	32	T. D. WILLIAMSON PIG SIG. TYPE IV, W/5" EXT.
83	16" 45" WLD. ELL, LR, 0.375" WT., STD. WT.,	33	24" X 2" WELDOLET, STD. WT., GR. Y-52
84	ASTM-A-234 WPB	34	2" W.N. FLG., 600# A.N.S.I., GR. B., STD. BORE
85	16" WLD. TEE, 0.375" WT., STD. WT., ASTM-A-234 WPB	35	2" F.P.V., 800# G.W.P.
86	16" BLIND FLG., RF, 600# ANSI, ASTM-A-105-75-ANSI B16.5	36	8" WLD. TEE, STD. WT., GR. B
87	16"x12" WLD. RED. TEE, 0.375" WT., STD. WT., ASTM-A-234 WPB	37	1" T.O.E. NIPPLE, XX-HVY.
88	12" W.N. FLG., RF, 600# ANSI, 12.000" BORE, STD. WT.,	38	1" SOCKET WLD. GATE VALVE 2000# G.W.P.
89	ASTM-A-105-75, ANSI B16.5	39	1" SOCKET WLD. ELL 3000# G.W.P.
90	12" F.B.V., RF, 600# ANSI, API SPEC. 6D, BOLTED OR CAST	40	1" UNION SOCKET WLD. TYPE 3000# G.W.P.
91	BODY CONST., GEAR OPER., FULL OPEN PORT BALL	41	1" S.G.V. 2000# G.W.P.
92	12" 90° WLD. ELL, LR, 0.375" WT., STD. WT.,	42	1" STREET ELL 3000# G.W.P.
93	ASTM-A-234 WPB	43	1" HEX BULL PLUG X.H.
94	16"x2" ELBOWET, SCH. 40, ASTM-A-105-75, ANSI B16.5	44	INSULATING SET FOR 2" 400# A.N.S.I. FLG.
95	2" W.N. FLG., RF, 600# ANSI, 1.939" BORE, XS,	45	20"x3" WELDOLET, SCH. 1D., ASTM A-105
96	ASTM-A-105-75, ANSI B16.5	46	2" YALE WLD. UNION, 600# A.N.S.I.
97	2" F.B.V., RF, 600# ANSI, API SPEC. 6D, BOLTED OR CAST	47	24" X 1/2" THREDOLET, 3000# G.W.P.
98	BODY, WRENCH OPER., FULL OPEN PORT BALL	48	1/2" M X 1/4" F S.P.V., 2000# G.W.P.
99	3"x3"x1" THICK CONC. SUPPORT BLOCK	49	4" INDICATING PRESSURE GAUGE, 0-1500# RANGE
100	1/2" HEX BULL PLUG, ASTM-A-105	50	20" PIPE SUPPORT & BAND PER DWG. STD.
			71-21-1 & 72-21-0
			24" PIPE SUPPORT & BAND PER DWG. STD.
			71-21-1 & 72-21-0
			T. D. WILLIAMSON PIG. SIG. TYPE IV
			3" 90° WLD. ELL, STD. ASTM A-234 GR WPB

!! CAUTION !!
THIS DRAWING IS FOR REFERENCE ONLY
GAS LINE LOCATIONS AND OTHER MEASUREMENTS SHOWN ON THIS MAP ARE APPROXIMATE. ATMOS DOES NOT GUARANTEE THE ACCURACY OF THIS MAP NOR DOES ATMOS GAS ASSUME ANY RESPONSIBILITY OR LIABILITY FOR RELIANCE THEREON. ANY RELIANCE ON THIS INFORMATION IS DONE AT YOUR OWN RISK.

MARK	PIPE SPECIFICATIONS		DESIGN DATA				TESTING REQUIREMENTS				
	OD INCHES	WALL THICKNESS INCHES	PIPE GRADE	DESIGN CLASS	DESIGN PRESS. PSIG	INTERNAL STRESS % SMY	TEST PRESS. PSIG	TEST BURST PRESS. PSIG	X-RAY		
*S	24.0	.385	X-65	1	.50	2085	800	38	1200	8	100
*C	24.0	.375	X-52	1	.50	1628	800	49	1200	8	100
A	20.0	.281	X-60	1	.72	1686	800	48	1200	8	10
B	20.0	.281	X-60	1	.50	1686	800	48	1200	8	100
M	20.0	.375	X-60	1	.50	2250	800	36	1200	8	100
*G	8.625	.322	X-42	1	.50	3137	800	26	1200	8	100
*H	6.625	.280	X-42	1	.50	3549	800	23	1200	8	100
*I	4.5	.237	X-42	1	.50	4433	800	18	1200	8	+100
*N	2.375	.154	X-42	1	.50	5447	800	15	1200	8	+100
*L	1.315	.179	B	1	.50	9527	800	8	1200	8	+

* IN STOCK +VISUAL OK

REFERENCE DWG.
LINE D17(24") D9759 SHT. 5 & 7
ALIG. SHT. H2444

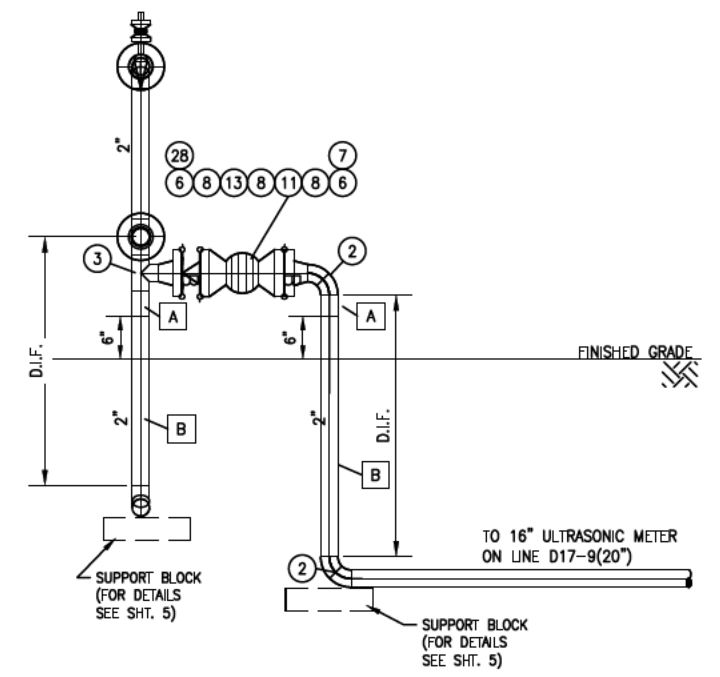
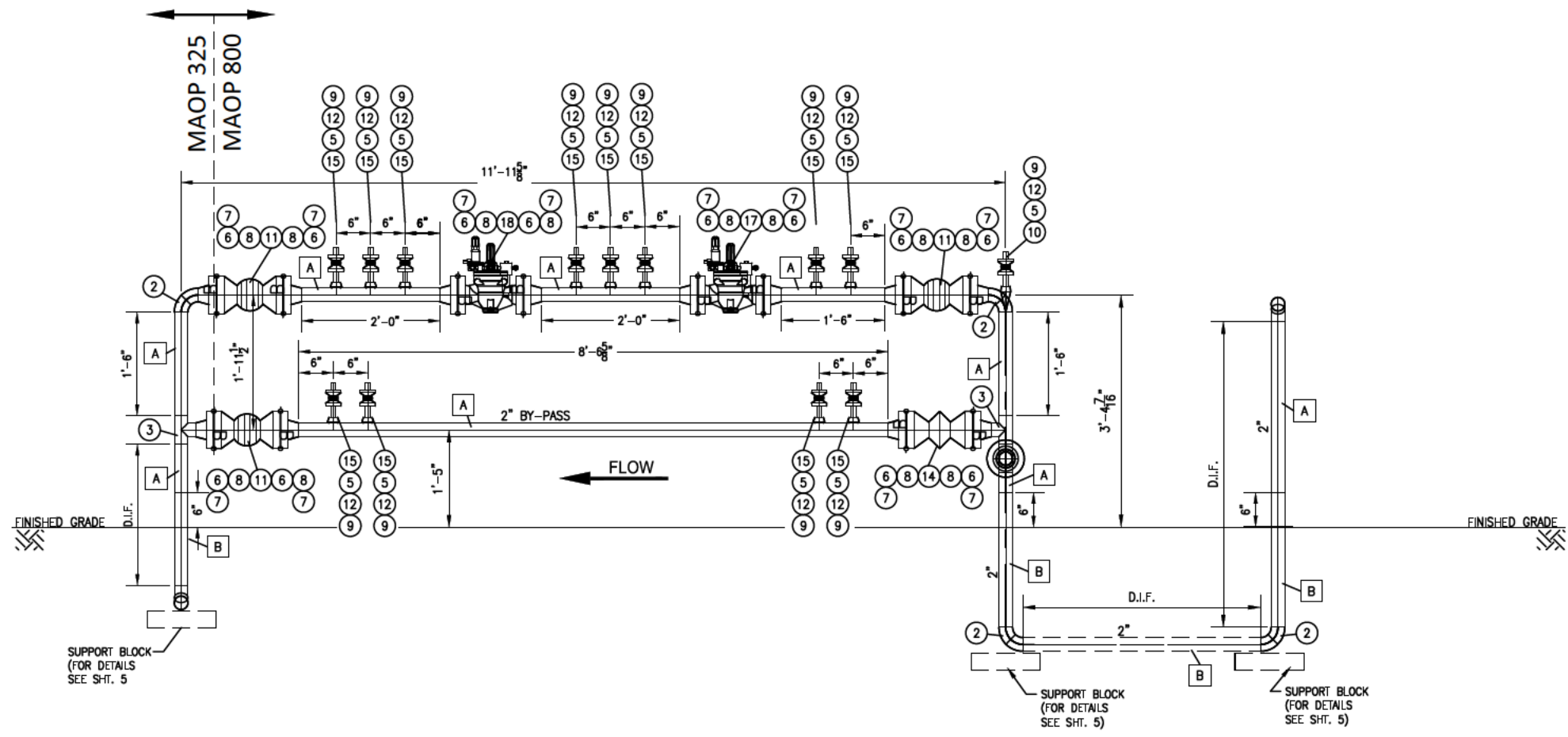


LINE D17-9(20")
SECTIONS & DETAILS

1/4" = 1' - 0"

NO.	REVISION	BY	DATE	NO.	REVISION	BY	DATE
18010156	3" LINE TO PIG TRAP	RCM	11/07				
	ADD H2444C REF., ERO154197U	GZ	11/02				
	CHANGED 2" X-OVER TO 4"	CMM	7-9-91				

DRAWN: BK DATE: 5-02-2001 DSWR#: DWG. D9759 SH: 6 of 7
PROJ. ENGR.:



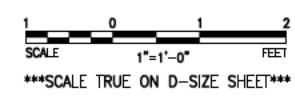
SECTION A
SCALE 1"=1'-0"

SECTION B
SCALE 1"=1'-0"

REFERENCE DWG.
REG. STA. LINE D17-9 D8330
ALIGN. SHT. C3163
PLAN D9759 SHT. 4
SECTIONS & BOM D9759 SHT. 9

COLLIN

COUNTY



ATMOS ENERGY ENGINEERING

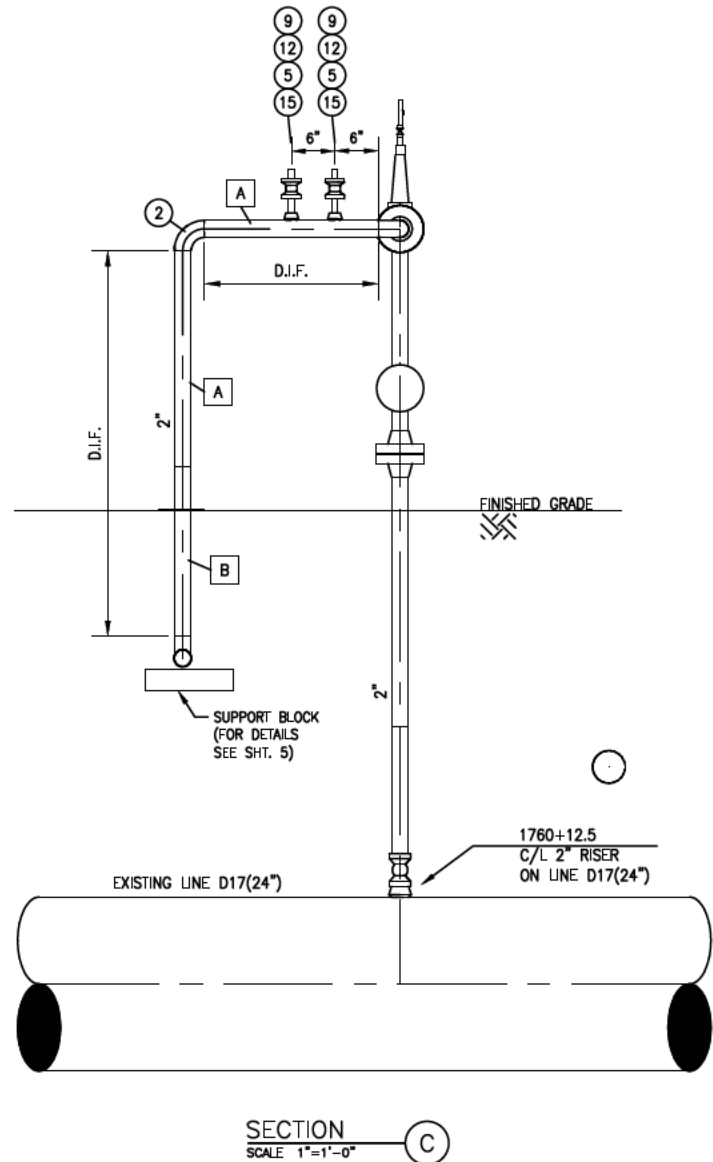
BY: _____ DATE: _____
Engineer/Project Specialist

BY: _____ DATE: _____
Engineer/Eng. Manager

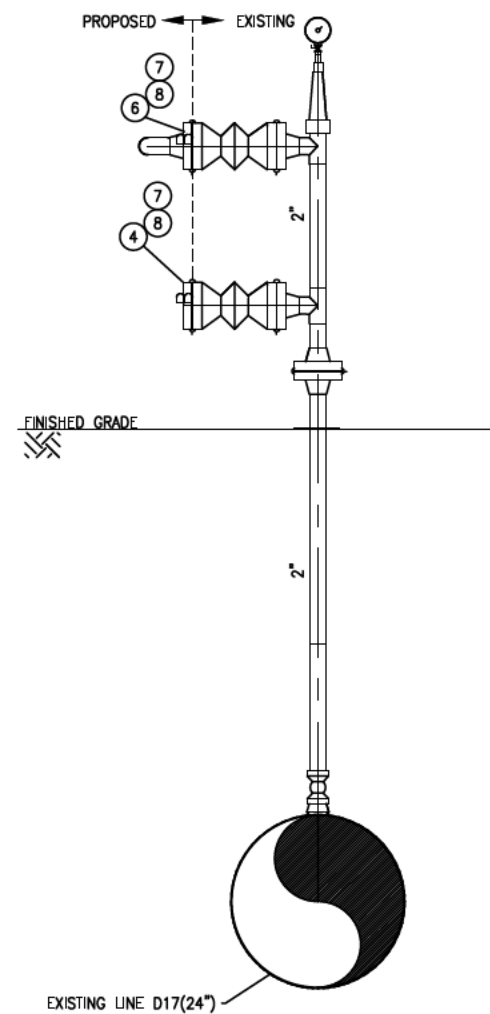
TEXAS

0	180.30172 TURN FINAL	VC	9/8/17
REV	DESCRIPTION	BY	DATE

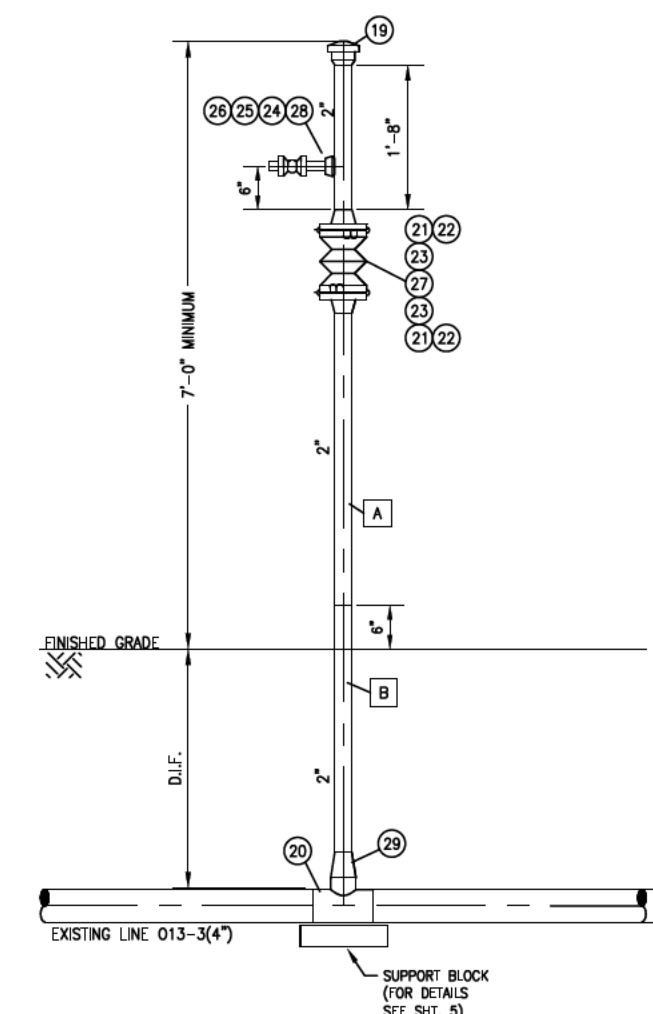
		LINE D17(24"), LINE D17-9(2") & LINE O13-3(4") MONITOR/REGULATOR STA. ELEVATION & SECTION	
		PROJ. ENGR.: ERIC DYGERT DRAWN BY: GLENN DUMAS	DATE: 5-07-15
PROJECT No. 180.30172 DRAWING No. D9759		DSWR No. SHT. No. 8 OF 9	



SECTION C
SCALE 1"=1'-0"



SECTION D
SCALE 1"=1'-0"



SECTION E
SCALE 1"=1'-0"

MARK		QTY	SIZE	DESCRIPTION
1	1	2"	ELBOW, WELD, 2", 45 DEG, LR, 0.218" WALL, ASTM A-234 GR. WPB, ANSI B16.9, BARE (FIELD FIT)	
2	11	2"	ELBOW, WELD, 2", 90 DEG, LR, 0.218" WALL, ASTM A-234 GR. WPB, ANSI B16.9, BARE	
3	3	2"	TEE, WELD, 2", 0.218" WALL, ASTM A-234 GR. WPB, ANSI B16.9, BARE	
4	1	2"	FLANGE, 2", RF, BLIND, 600# ANSI, ASTM A-105, ANSI B16.5, BARE	
5	15	1/2"	NIPPLE, 1/2" (XH) X 3" LG PIPE, ASTM A-106, GR. B, SMLS TBE	
6	15	2"	FLANGE, 2", RF, WN, 600# ANSI, 1.939" BORE, ASTM A-105, ANSI B16.5, BARE	
7	15	5/8"	(8) BOLT, STUD 5/8" X 4 1/2" LG, ASTM A-193 GR. B7 W/ 2 ASTM A-194 GR. 2H HEAVY HEX NUTS EACH, CAD PLATED, (FOR 2.000", 600# ANSI RF FLANGE)	
8	16	2"	GASKET, 2", 600# ANSI, 304/316 SS GUIDE AND BACKING RING SPIRAL WOUND GASKET, FLEXITALIC CGI OR EQUAL	
9	15	1/2"	PLUG, HEX HEAD, 1/2", SOLID, THRD, ASTM A-105, ANSI B16.11	
10	1	2"x1/2"	ELL-O-LET, THRD, 2" X 1/2", 3000#, ASTM A-105	
11	4	2"	VALVE, BALL, 2", RF, FLG, 600# ANSI, CS BODY, ENP BALL & TRIM, PTFE SEAT, FULL PORT, TRUNNION BALL, 1/4 TURN, MFG STD PACKING, API 6D	
12	15	1/2"	VALVE, BALL, 1/2", THRD, 2000 WOG, CS BODY, SS BALL & TRIM, PTFE SEAT, FULL PORT, FLOATING BALL, 1/4 TURN, MFG STD PACKING, ASME B16.34	
13	1	2"	VALVE, CHECK, WAFER, 2", RF, 600# ANSI, CS BODY, SS TRIM, HF SEAT, CS DISK, API 6D	
14	1	2"	VALVE, PLUG, 2", RF, FLG, 600# ANSI, CS BODY, CS PLUG, FULL PORT, 1/4 TURN, BOLTED BONNET, MFG STD PACKING/BONNET BOLTING/GASKET, API 6D	
15	14	2"x1/2"	THREDOLET, 2" X 1/2", 3000#, ASTM A-105	
16	1	2"x1"	THREDOLET, 2" X 1", 3000#, ASTM A-105	
17	1	2"	REGULATOR, FLG, 2", RF 600# (SET), FISHER EZR	
18	1	2"	REGULATOR, FLG, 2", RF 600# (SET), FISHER EZR	
19	1	2"	CLOSURE, QUICK OPENING, 2", W/PRESSURE ALERT VALVE, 300# ANSI, BUNA-N O-RING MATERIAL, FOR 0.218" WT, GRADE X-42 PIPE (YALE FIG 500)	
20	1	4"x3"	TEE, RED, WELD, 4" X 3", 0.237" RUN X 0.216" WALL, ASTM A-234 GR. WPB, ANSI B16.9, BARE	
21	2	2"	FLANGE, 2", RF, WN, 300# ANSI, 1.939" BORE, ASTM A-105, ANSI B16.5, BARE	
22	2	5/8"	(8) BOLT, STUD 5/8" X 3 3/4" LG, ASTM A-193 GR. B7 W/ 2 ASTM A-194 GR. 2H HEAVY HEX NUTS EACH, CAD PLATED, (FOR 2.000", 300# ANSI RF FLANGE)	
23	2	2"	GASKET, 2", 300# ANSI, 304/316 SS GUIDE AND BACKING RING SPIRAL WOUND GASKET, FLEXITALIC CGI OR EQUAL	
24	1	1"	NIPPLE, 1" (XH) X 4" LG PIPE, ASTM A-106, GR. B, SMLS TBE	
25	1	1"	VALVE, BALL, 1", THRD, 2000 WOG, CS BODY, SS BALL & TRIM, PTFE SEAT, FULL PORT, FLOATING BALL, 1/4 TURN, MFG STD PACKING, ANSI B16.34	
26	1	1"	PLUG, HEX HEAD, 1", SOLID, THRD, ASTM A-105, ANSI B16.11	
27	1	2"	VALVE, PLUG, 2", RF, FLG, 300# ANSI, CS BODY, CS PLUG, FULL PORT, 1/4 TURN, BOLTED BONNET, MFG STD PACKING/BONNET BOLTING/GASKET, API 6D, C/W LOCKING DEVICE	
28	1	5/8"	(8) BOLT, STUD 5/8" X 7" LG, ASTM A-193 GR. B7 W/ 2 ASTM A-194 GR. 2H HEAVY HEX NUTS EACH, CAD PLATED, (FOR 2.000", 600# ANSI RF FLANGE) (BOLTS FOR INSTALLING WHEATLEY WAFER VALVE)	
29	1	3"x2"	CONC. REDUCER, WELD, 3" X 2", 0.216" X 0.218" WALL, ASTM A-234 GR. WPB, ANSI B16.9, BARE	

REFERENCE DWG.
REG. STA. LINE D17-9
ALIGN. SHT.
PLAN
ELEVATION & SECTION

D8330
C3163
D9759 SHT. 4
D9759 SHT. 8

COLLIN

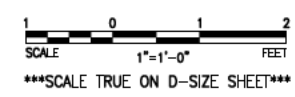
COUNTY

ATMOS ENERGY ENGINEERING

BY: _____ DATE: _____
Engineer/Project Specialist

BY: _____ DATE: _____
Engineer/Eng. Manager

TEXAS



REV	DESCRIPTION	BY	DATE	PROJECT No. 180.30172	DSWR No.	DRAWING No. D9759	SHT. No. 9	OF 9
0	180.30172 TURN FINAL	VC	9/8/17					



LINE D17(24"), LINE D17-9(2") & LINE O13-3(4") MONITOR/REGULATOR STA. ELEVATION & SECTION

PROJ. ENGR.: ERIC DYGERT
DRAWN BY: GLENN DUMAS
DATE: 5-07-15