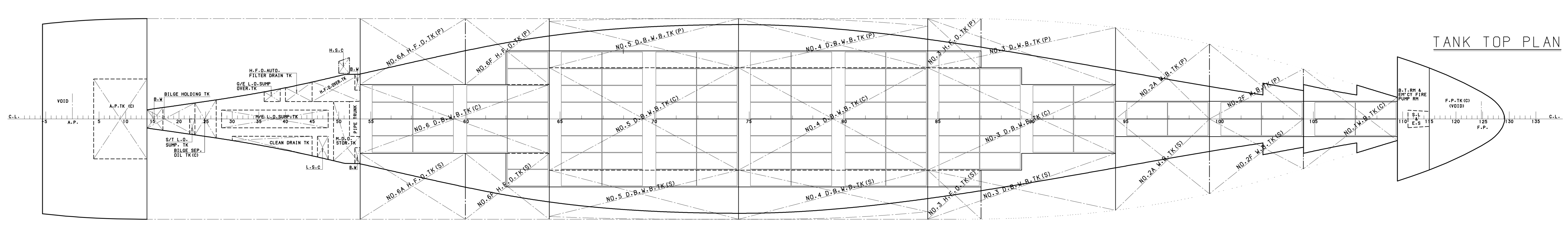
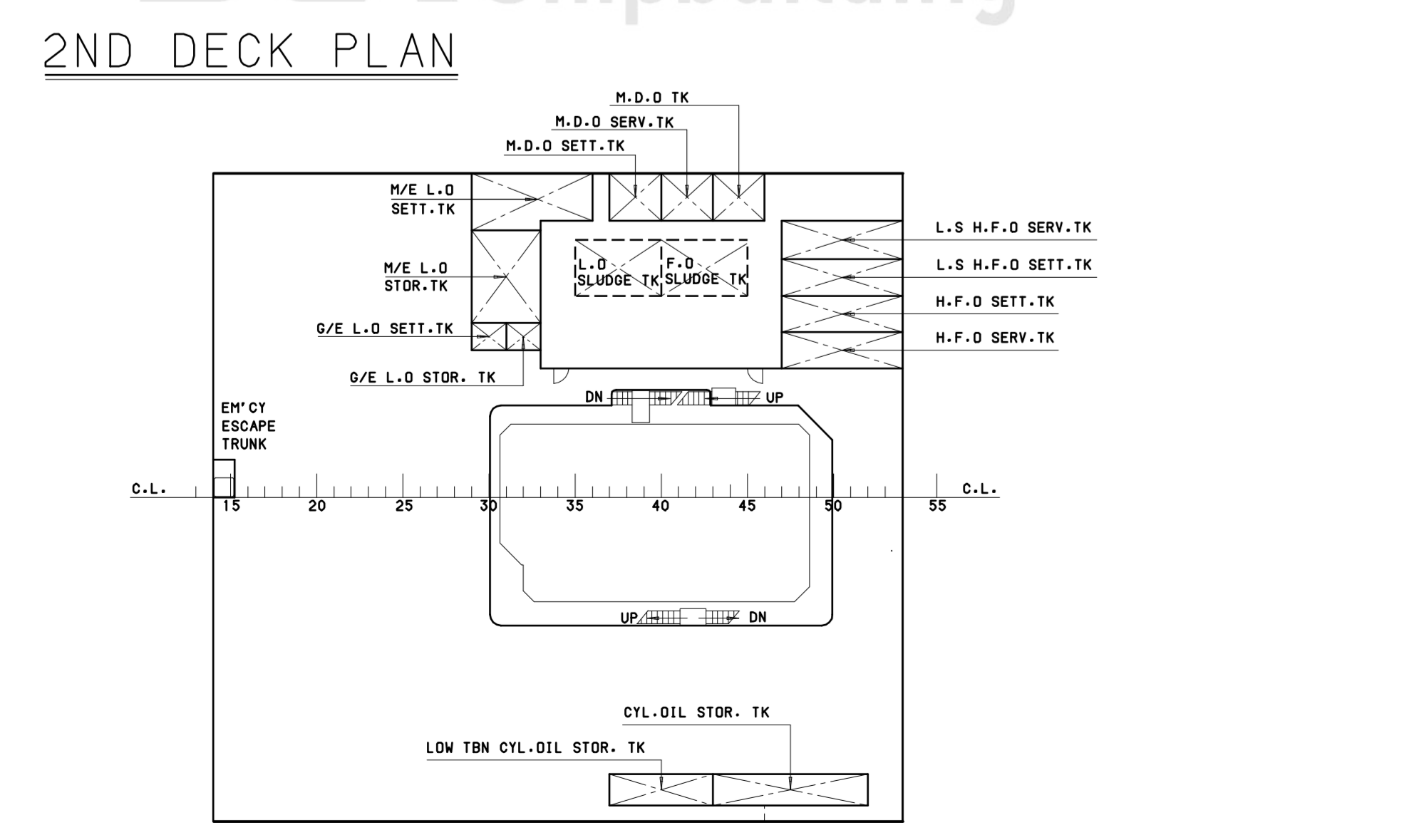
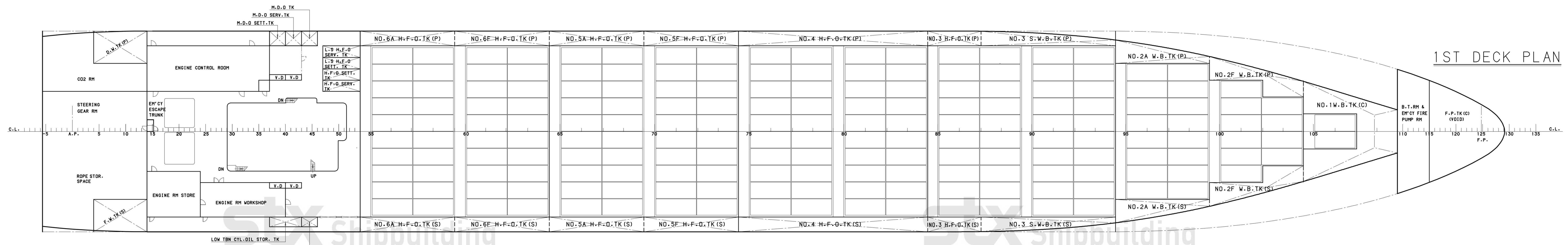
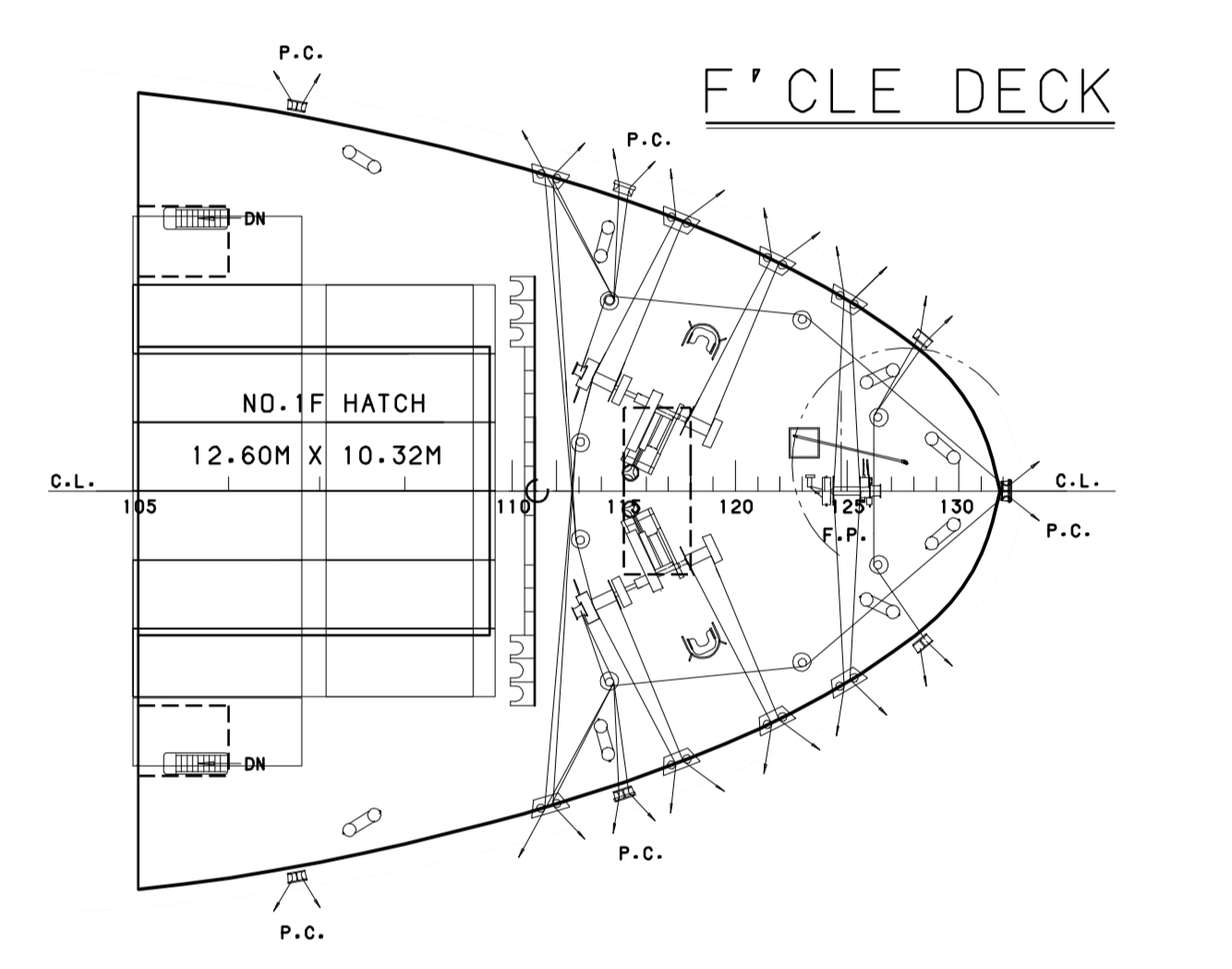
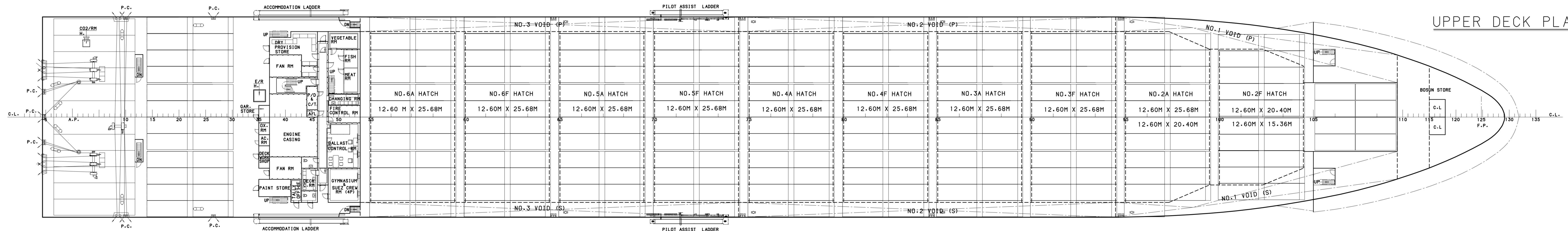
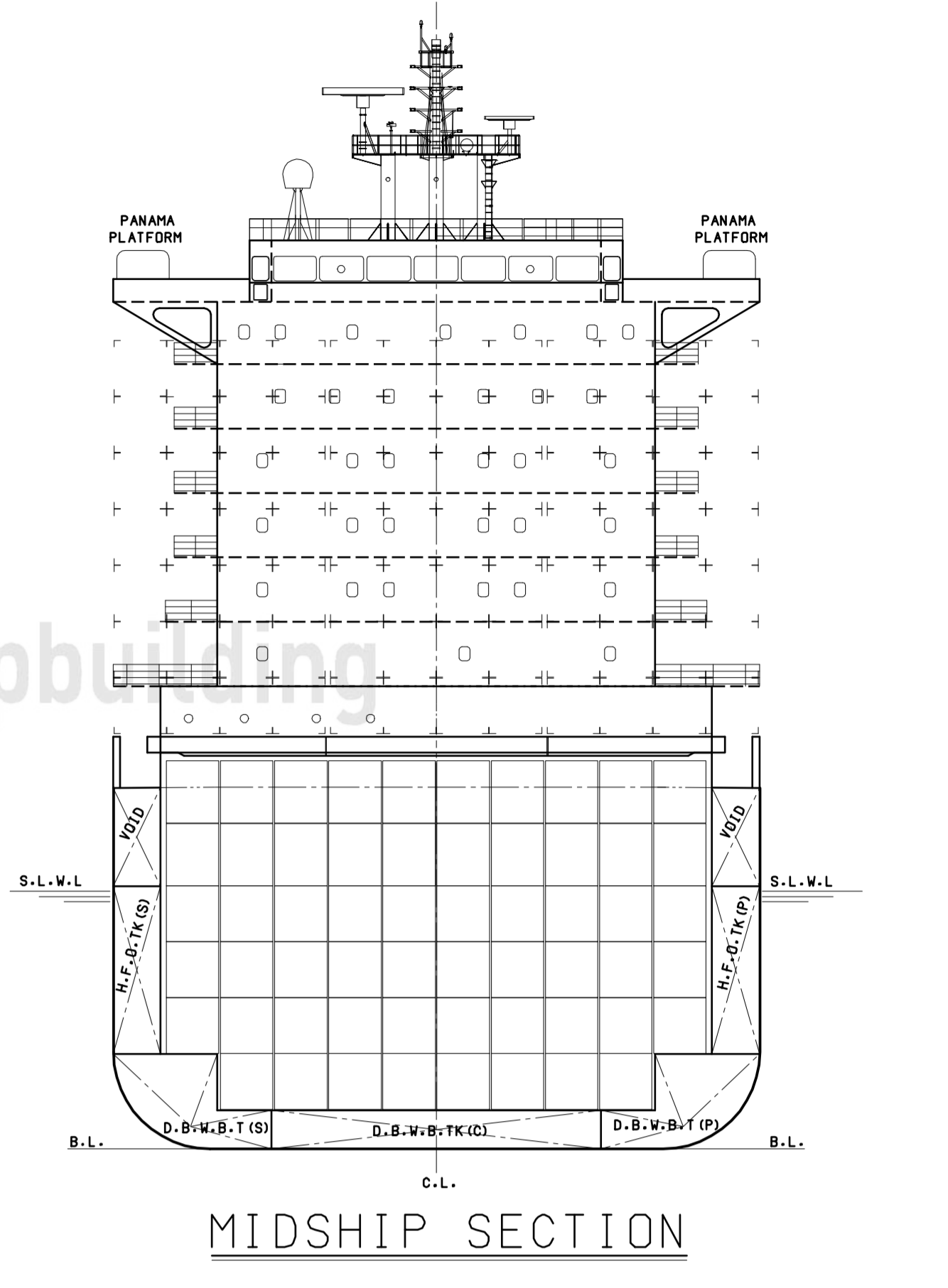
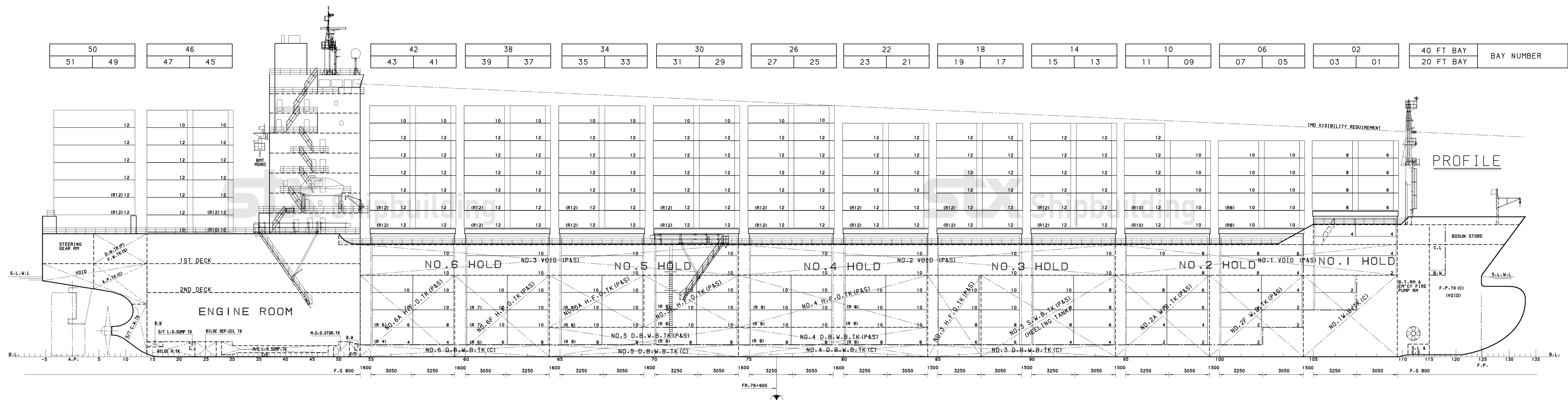
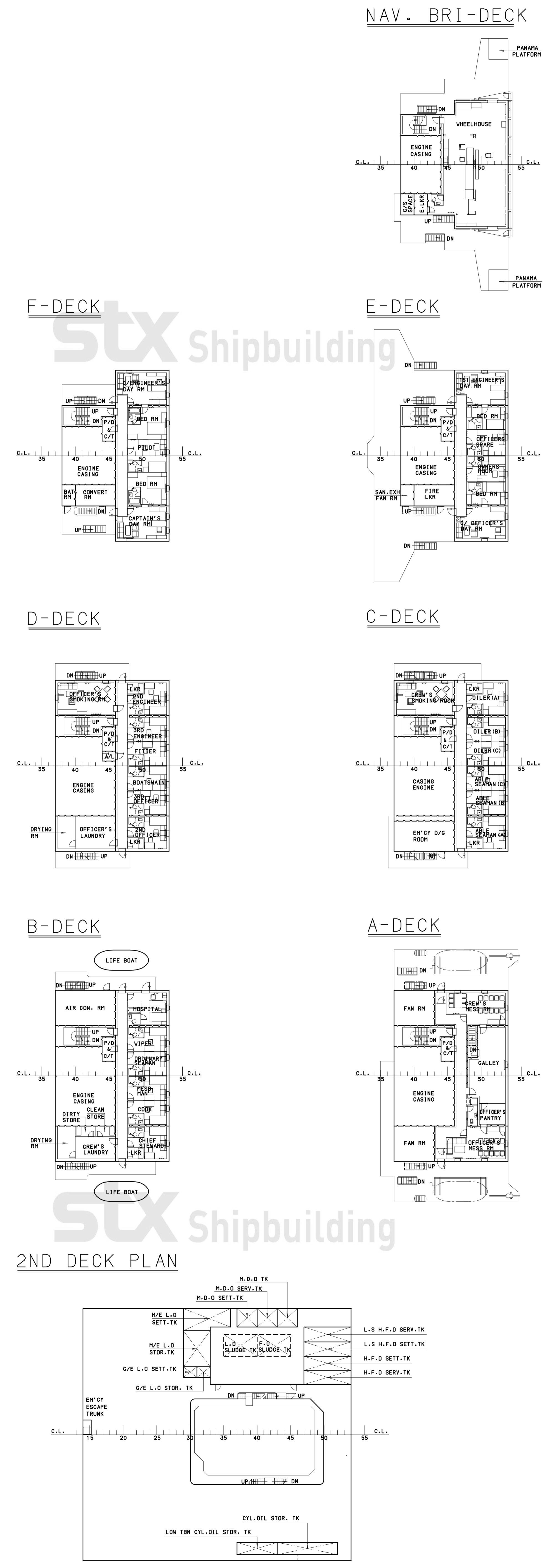


PLAN HISTORY				
DATE	REV.	DESCRIPTION	DWG. CHKD.	MR.
2008.08.11	1	DRAWN BY BASIC RESEARCH TEAM	H. G. KIM	J. P. HONG

GENERAL ARRANGEMENT



PRINCIPAL PARTICULARS

LENGTH O.A.	Appx. 222.60 M
LENGTH B.P.	211.50 M
BREADTH (MLD.)	30.10 M
DEPTH (MLD.)	16.80 M
DRAFT Design (MLD.)	12.00 M
Scantl. (MLD.)	12.00 M

CRASS NIPPON KAIJI KYOKAI (NK)
 NS+, CONTAINER CARRIER,
 MNS+, MO, PSCM

FLAG PANAMA
 COMPLEMENT 24P + 4P (SUZUKI CREW)

THIS DRAWING OR EQUIPMENT IS THE PROPERTY OF STX SHIPBUILDING CO., LTD. AND MUST NOT BE PARTIALLY OR WHOLLY COPIED OR USED FOR ANY OTHER PURPOSE WITHOUT PRIOR WRITTEN PERMISSION OF STX SHIPBUILDING CO., LTD.

STX	MODEL NO.	2900TEU01 (S1240)
	TYPE	2,900TEU CLASS CONTAINER VESSEL
MANAGER: C. J. KIM	TITLE	GENERAL ARRANGEMENT

DEPT: 1 BASIC RESEARCH SCALE DATE: 2008.08.11 DWG. NO.: B0171000 REV. NO.: 1
 TEAM TEL. NO.: 055-548-3212

STX Shipbuilding Co., Ltd.