



**Highway Factors Attachment – TxDOT Detail of Raised Pavement Markers on Two Lane
Highways**

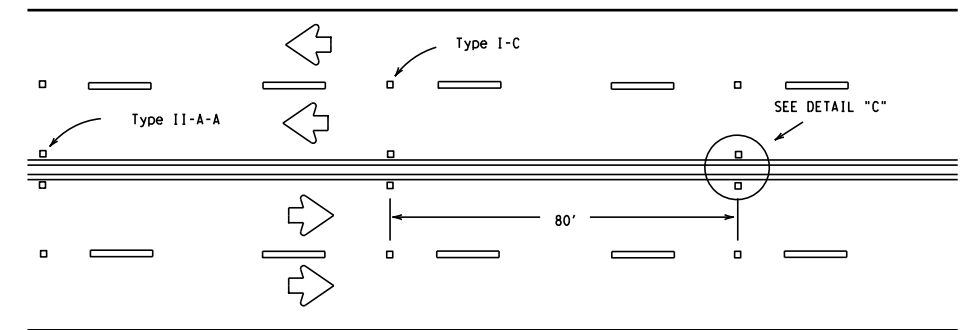
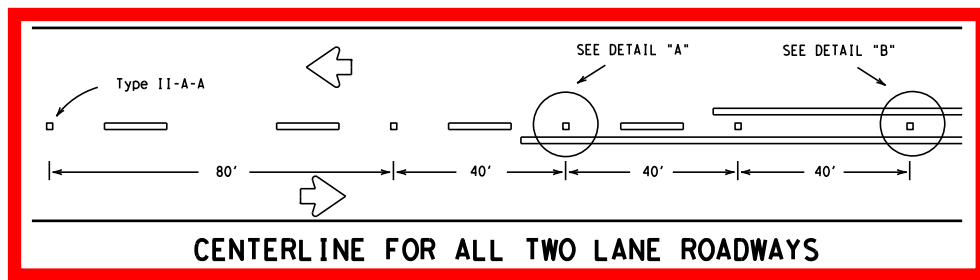
Andrews, TX

HWY22MH006

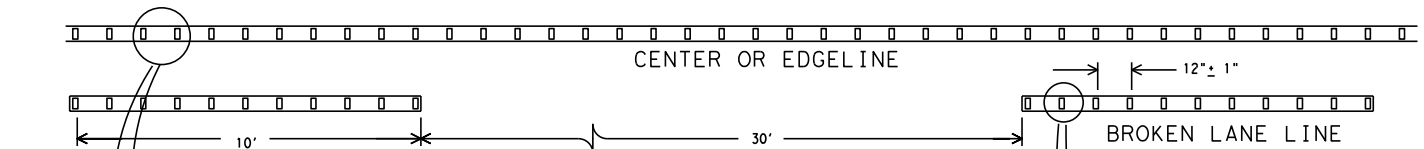
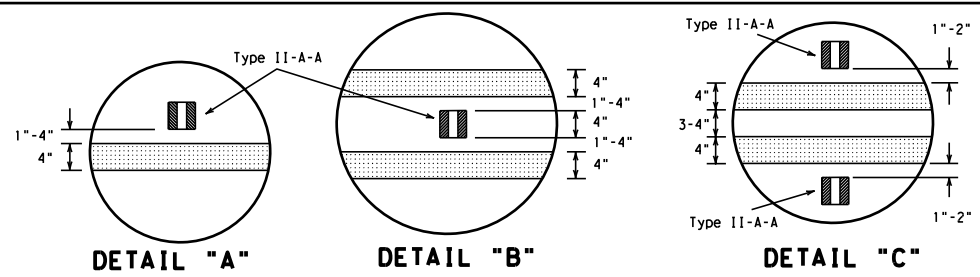
(2 pages)

The use of this standard is covered by the "Texas Engineering Practice Act". No warranty of any kind is made by TxDOT for any purpose whatsoever. TxDOT assumes no responsibility for the conversion of this standard to other formats or for incorrect results or damages resulting from its use.
 DATE: 3/3/2020 7:23:09 AM
 FILE: C:\Users\agsub\Documents\Profiling\contracts\Standards\Traffic\unnumbered pm2-12.dgn

REFLECTIVE RAISED PAVEMENT MARKERS FOR VEHICLE POSITIONING GUIDANCE

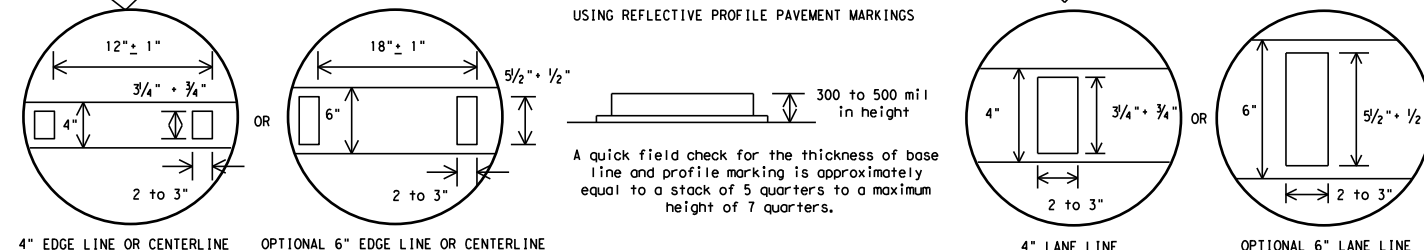


Raised pavement marker Type I-C, clear face toward normal traffic, shall be placed on 80-foot centers.



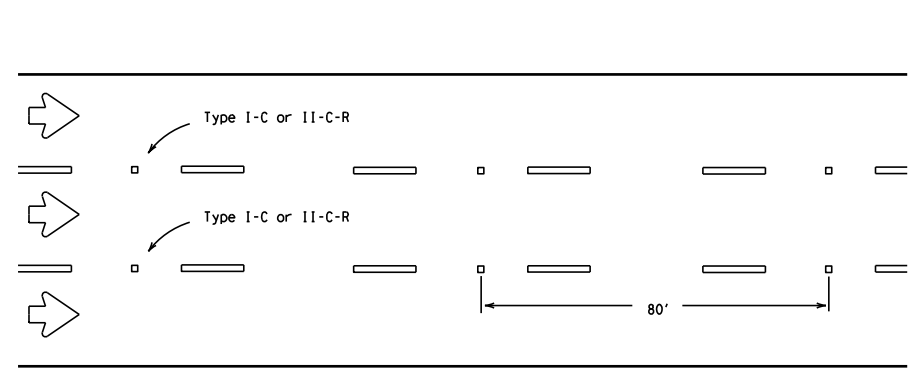
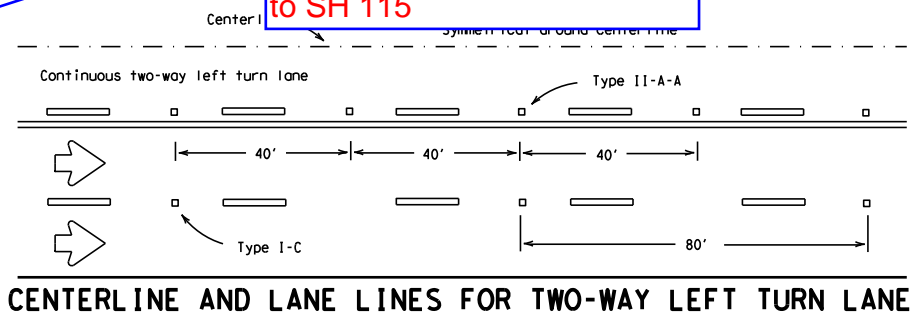
REFLECTORIZED PROFILE PATTERN DETAIL

USING REFLECTIVE PROFILE PAVEMENT MARKINGS



NOTE:
Profile markings shall not be placed on roadways with a posted speed limit of 45 MPH or less.

Raised pavement marker placement detail for centerline of FM 1788 from Gaines/Andrews County line to SH 115



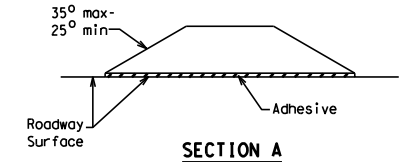
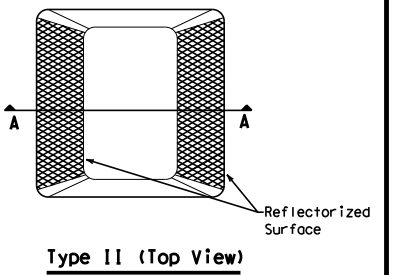
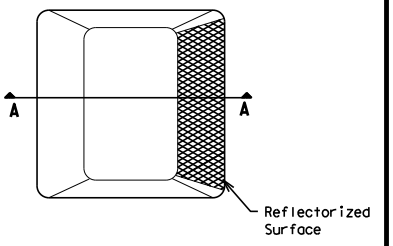
Raised pavement markers Type II-C-R shall have clear face toward normal traffic and red face toward wrong-way traffic.

GENERAL NOTES

- All raised pavement markers placed in broken lines shall be placed in line with and midway between the stripes.
- On concrete pavements the raised pavement markers should be placed to one side of the longitudinal joints.

MATERIAL SPECIFICATIONS	
PAVEMENT MARKERS (REFLECTORIZED)	DMS-4200
EPOXY AND ADHESIVES	DMS-6100
BITUMINOUS ADHESIVE FOR PAVEMENT MARKERS	DMS-6130
TRAFFIC PAINT	DMS-8200
HOT APPLIED THERMOPLASTIC	DMS-8220
PERMANENT PREFABRICATED PAVEMENT MARKINGS	DMS-8240

All pavement marking materials shall meet the required Departmental Material Specifications as specified by the plans.



RAISED PAVEMENT MARKERS

Texas Department of Transportation
 Traffic Operations Division
POSITION GUIDANCE USING RAISED MARKERS
REFLECTORIZED PROFILE MARKINGS
PM(2)-12

REVISONS		JOB		HIGHWAY	
4-92	2-10	0906	00	229	VARIOUS
5-00	2-12				
8-00					
2-08					
© TxDOT April 1977		DIST	COUNTY	SHEET NO.	
		ODA	ECTOR	39	