



NATIONAL TRANSPORTATION SAFETY BOARD

Office of Aviation Safety
Western Pacific Region

ON SCENE INFORMATION

WPR19LA063

Accident Date: January 13, 2019

This document contains 7 embedded images
(photos courtesy Mohave County)

A. ACCIDENT

Location: Hualapai Mountain Park, Hualapai, Arizona
Date: January 13, 2019
Aircraft: Piper PA22-160, N9227D, Serial # 22-6287
NTSB IIC: Michael Huhn

B. SUMMARY

On 01/13/2019 at about 1045 Mountain standard time, a 1958 Piper PA-22-160 Tri-Pacer was substantially damaged when it struck trees and terrain in Hualapai Mountain Park, AZ. There was no fire. The noncertificated male pilot received serious injuries and his female passenger received fatal injuries.

According to relatives of the passenger, the airplane departed from Kingman Airport (IGM), Kingman AZ, and was destined for Glendale Municipal Airport (GEU), Glendale AZ, about 132 miles to the southeast.

The accident occurred during the US Government sequestration, and no NTSB, FAA, Piper, or Lycoming personnel responded to the accident site. Responding agencies included the Mohave County (AZ) Sheriff's Department and Mohave County Public Works (Parks division).

The wreckage was recovered later that evening by Air Transport and taken to their facility in Phoenix AZ.

C. LOCATION INFORMATION

The accident site geographic coordinates were
35.1021° N
-113.8853° W

Site elevation was approximately 6,500 ft msl

The accident location was about 9.8 nm on a True bearing of 165° from IGM.

The airplane came to rest inverted at the bottom of a ravine, about 880 ft on a True bearing of 328° from a park parking lot, and about 250 ft on a True bearing of 070° from a park road.

D. MAP and TERRAIN VIEWS

1.0 Sectional Aeronautical Charts

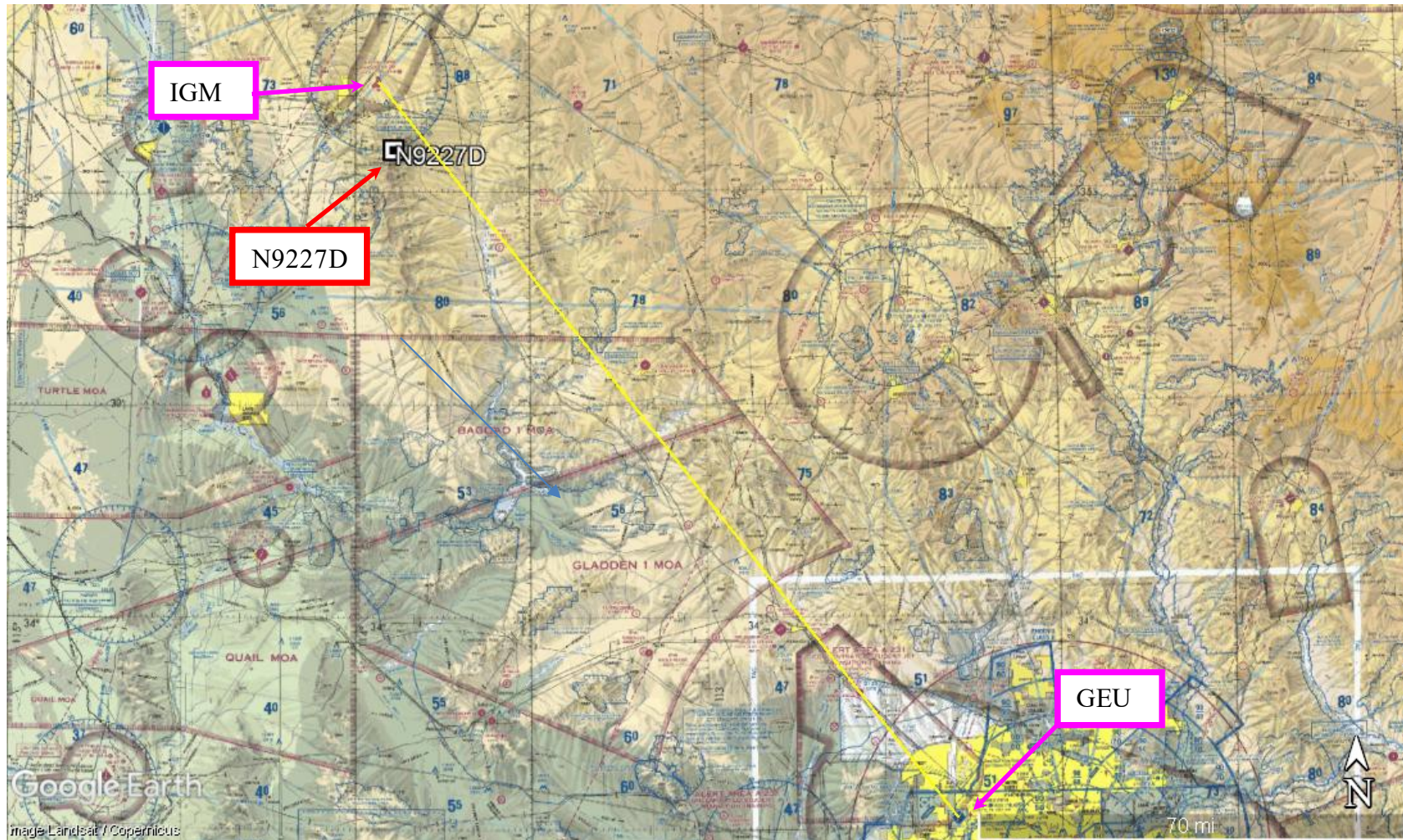


Figure 1 - Reported Flight Airport Pair

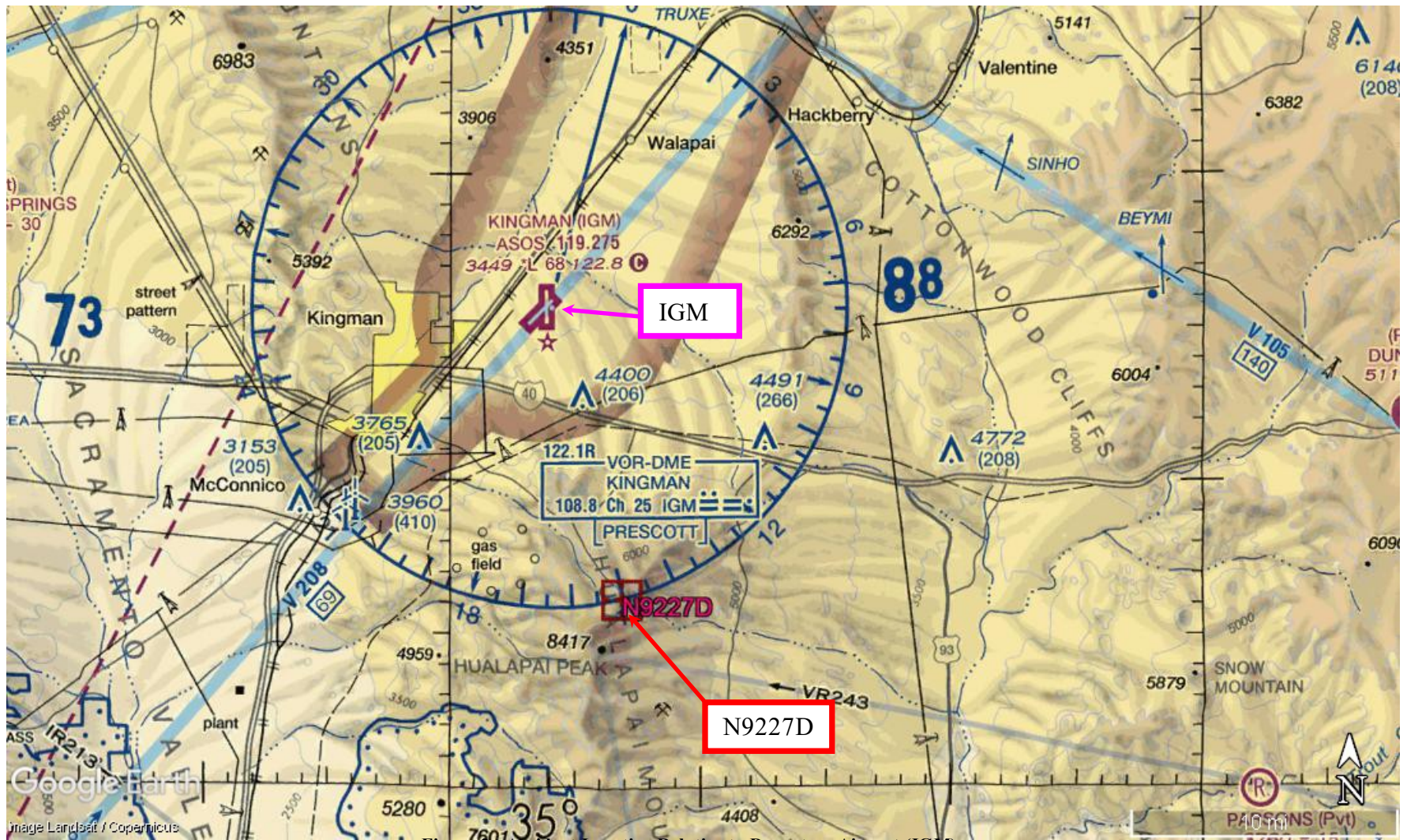


Figure 2 - Accident Location Relative to Departure Airport (IGM)

2.0 Terrain Views

departure and accident locations

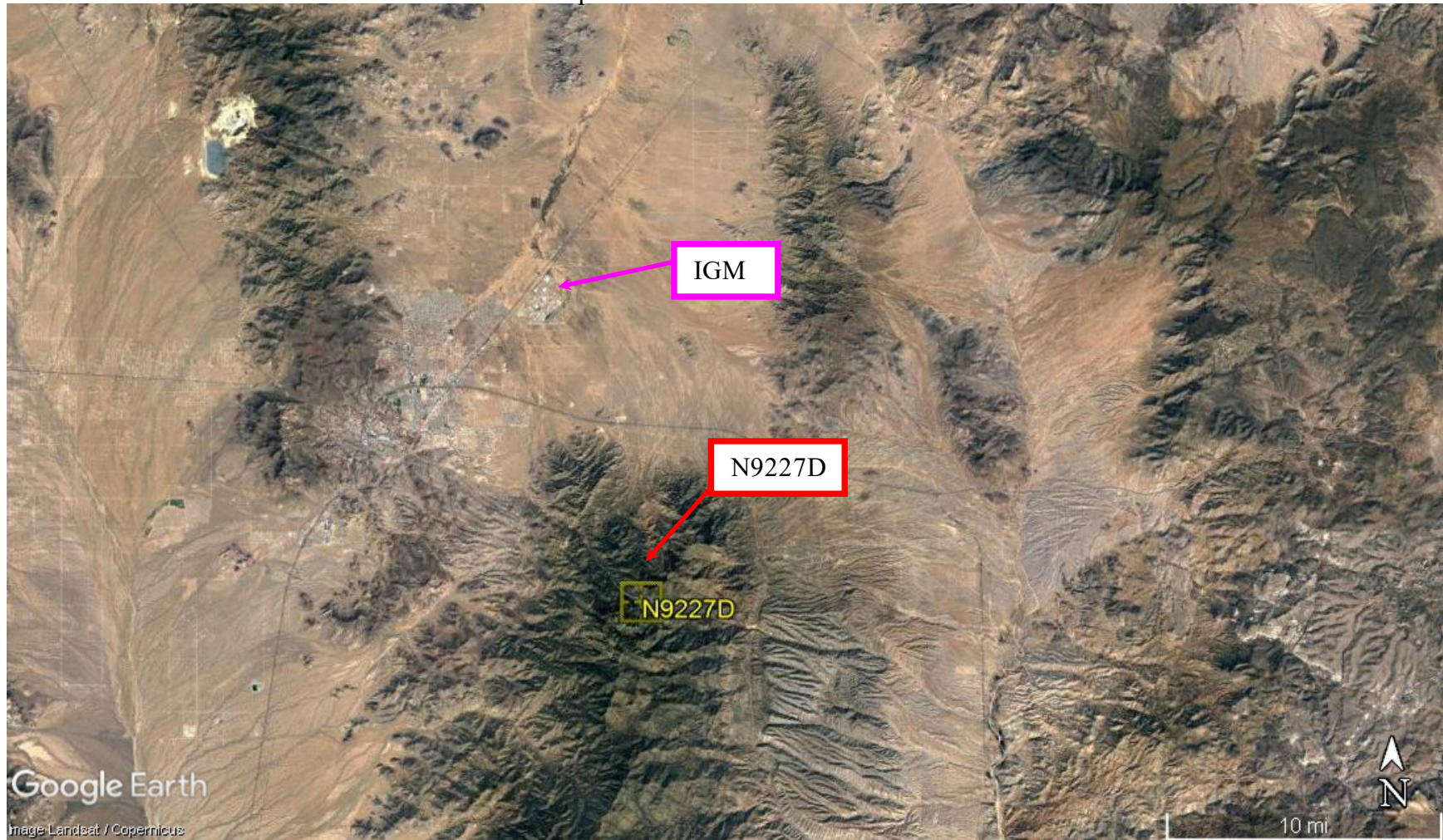


Figure 3 - Accident Location Relative to Departure Airport

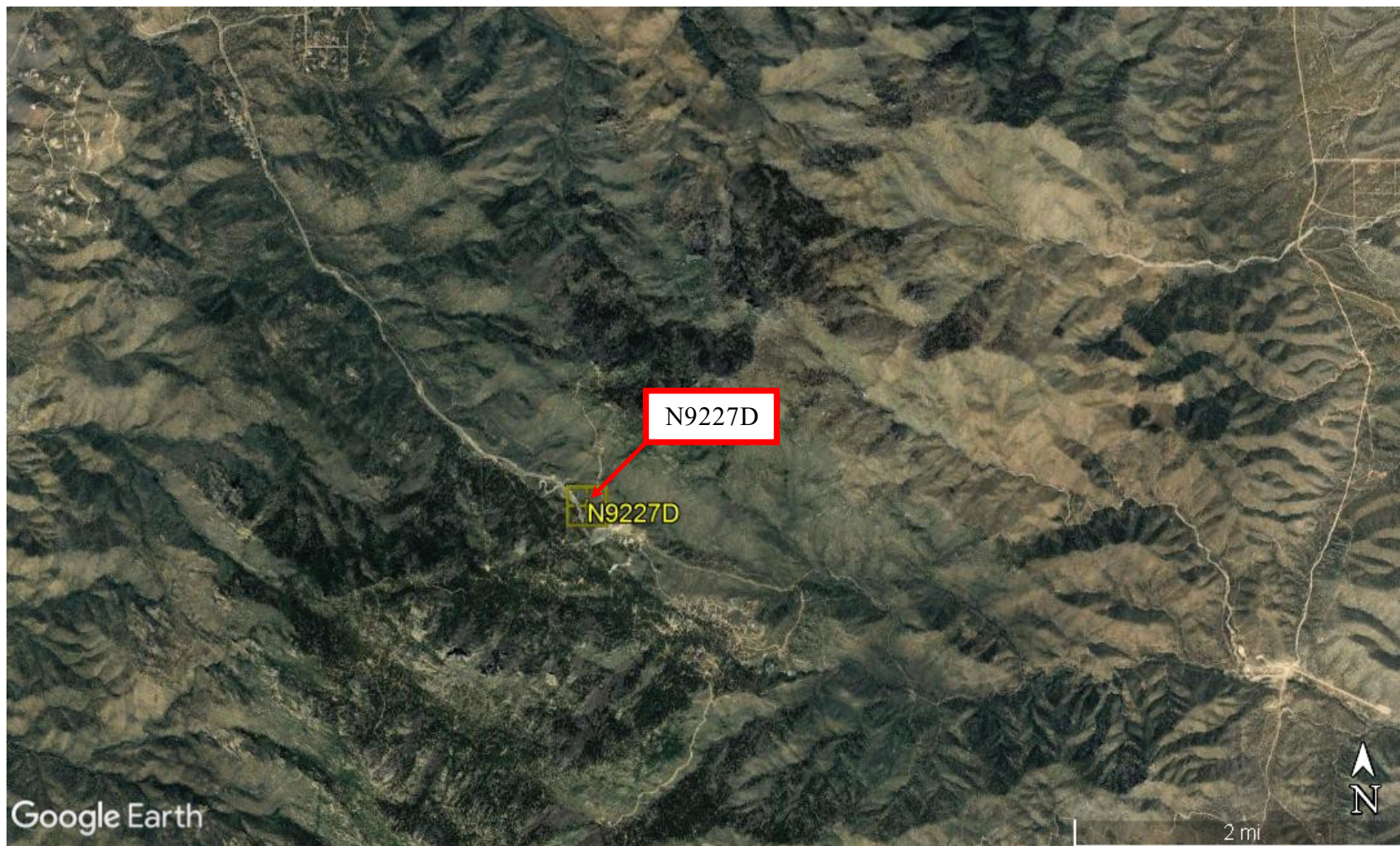


Figure 4 - Accident Location

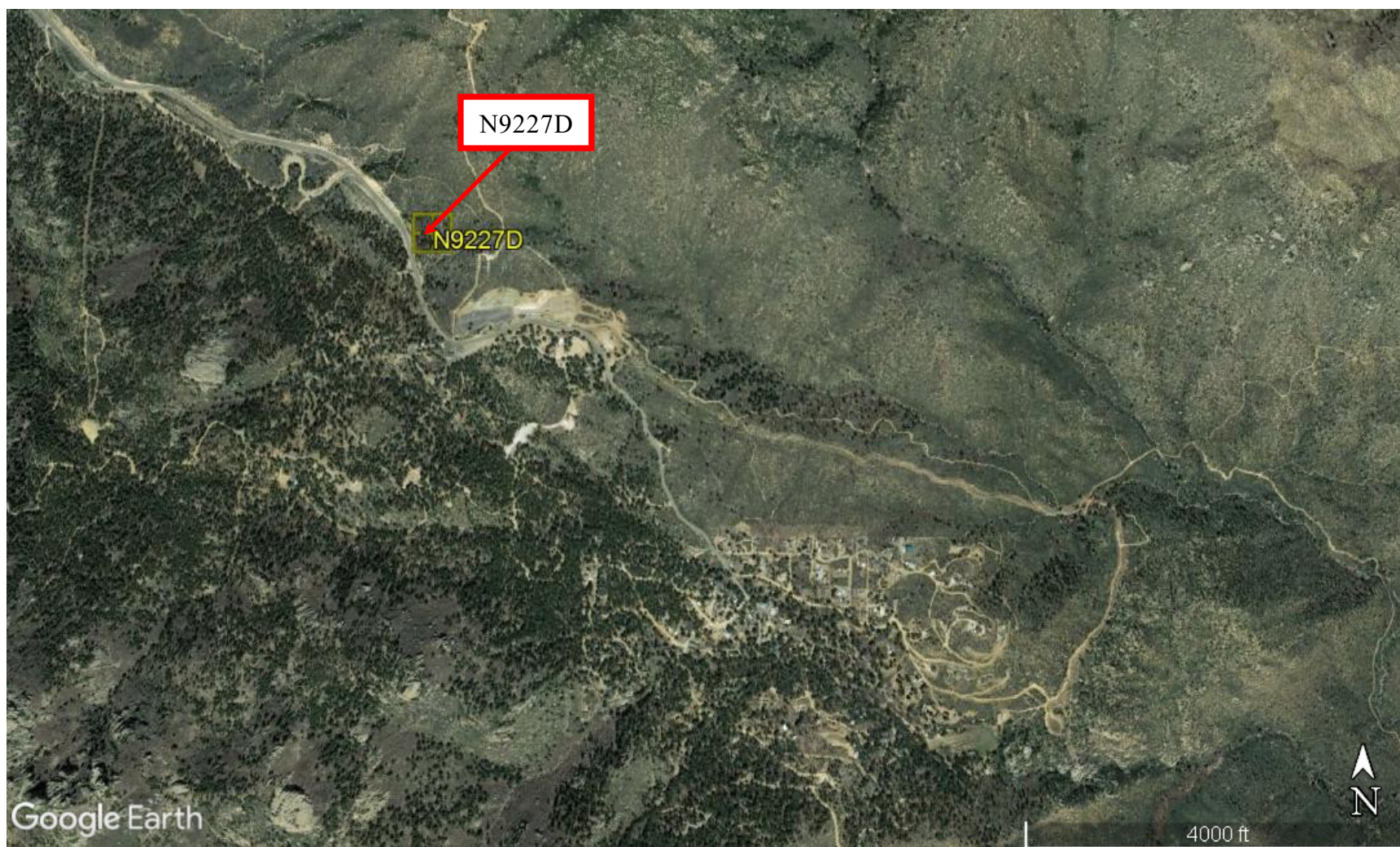


Figure 5 - Accident Location

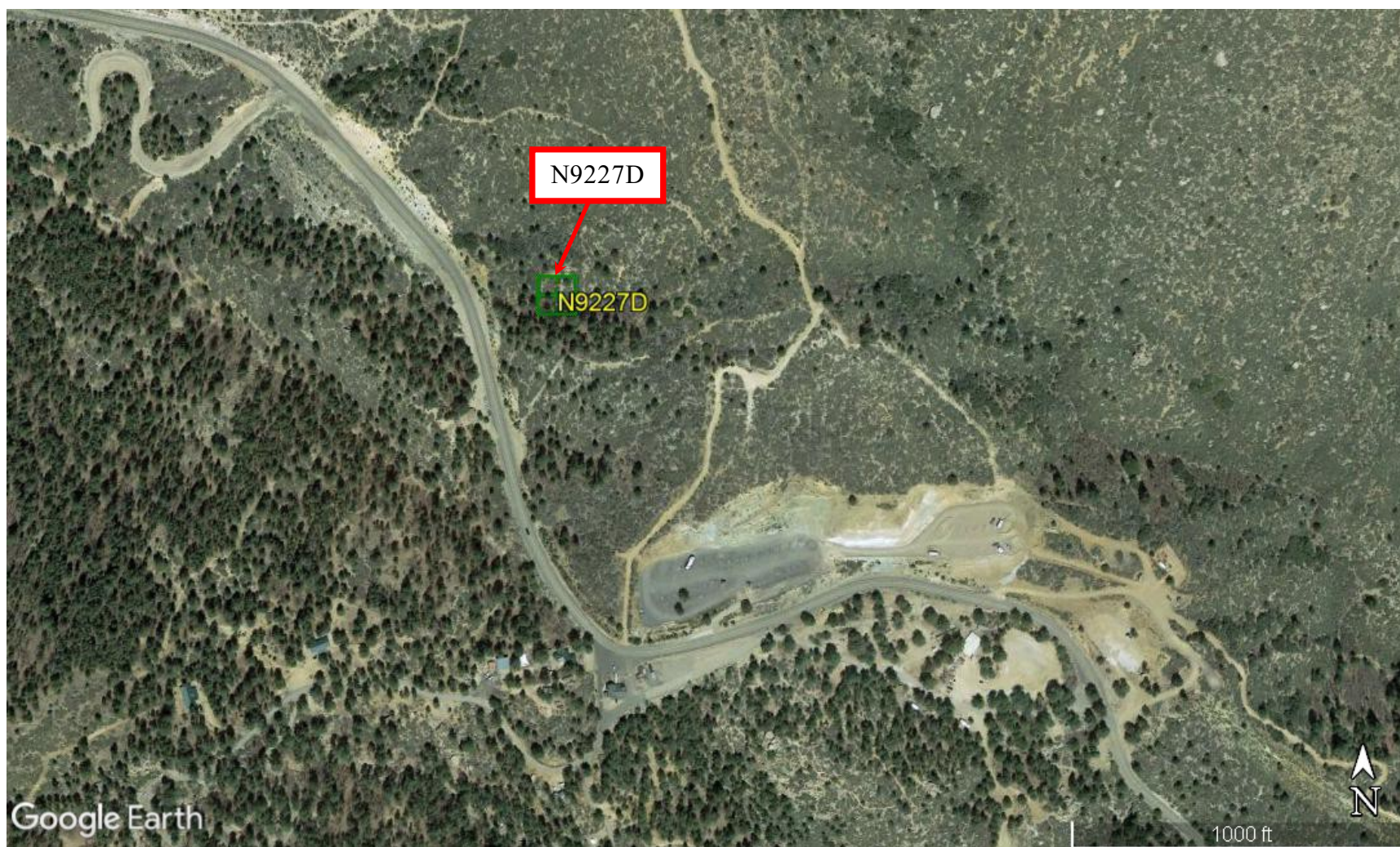


Figure 6 - Accident Location

E. WRECKAGE PHOTOGRAPH



Figure 7 - Wreckage (in situ)