



Photo 1 – Main Wreckage (FAA Photo)



Photo 2 – Right Wing (FAA Photo)



Photo 3 – Engine and Propeller (NTSB Photo)



Photo 4 – Spark Plugs (NTSB Photo)



Photo 5 – Oil Filter (NTSB Photo)



Photo 6 – Fuel Gascolator (NTSB Photo)

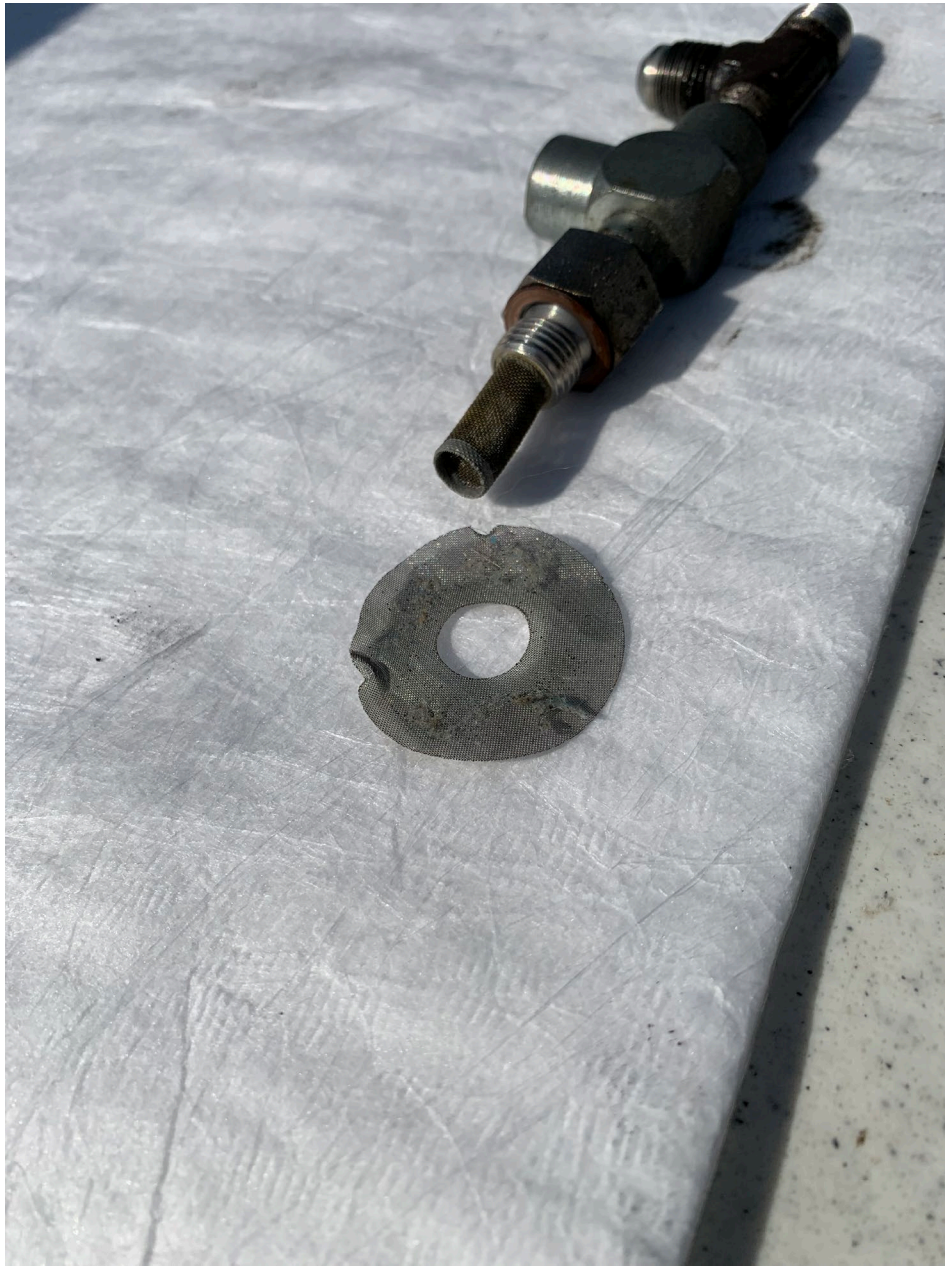


Photo 7 – Fuel Screens (NTSB Photo)



Photo 8 – Fuel From Carburetor Bowl (NTSB Photo)