



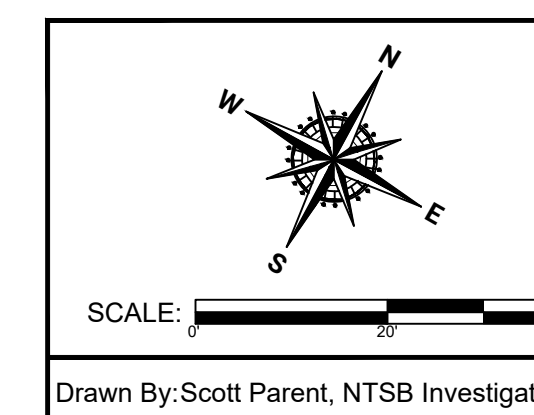
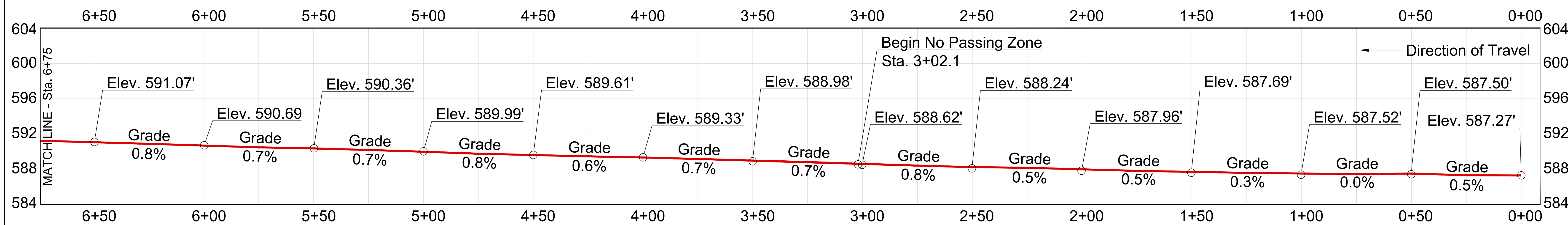
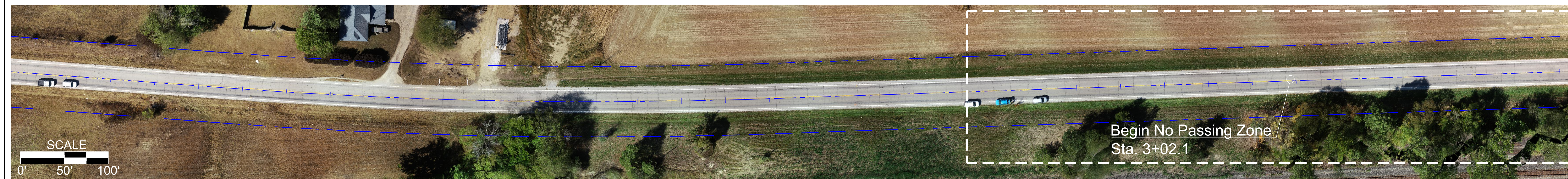
HIGHWAY FACTORS ATTACHMENT

NTSB Horizontal and Vertical Alignments

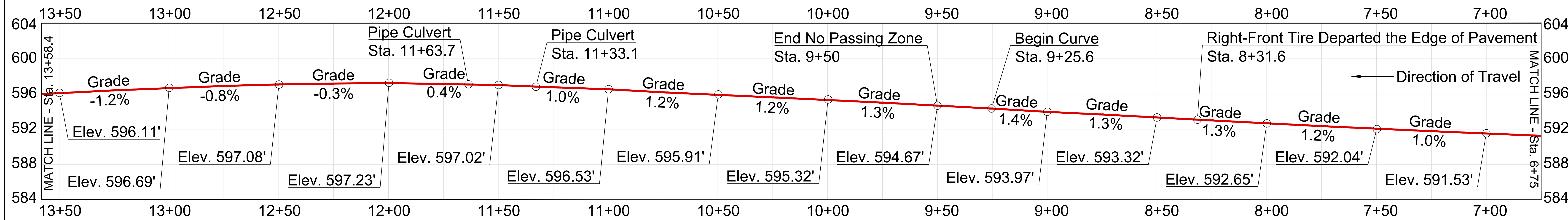
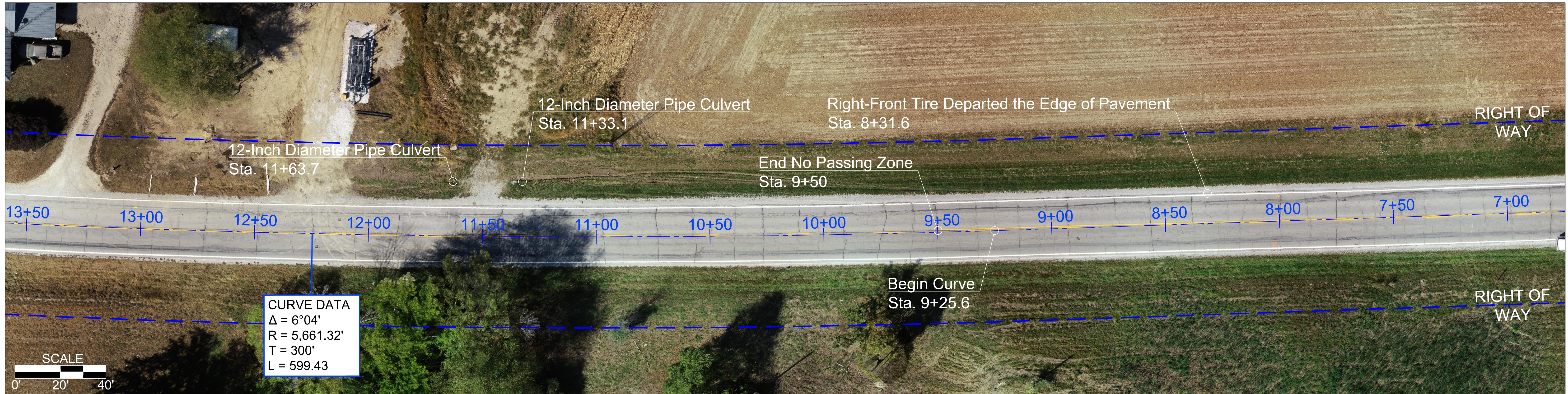
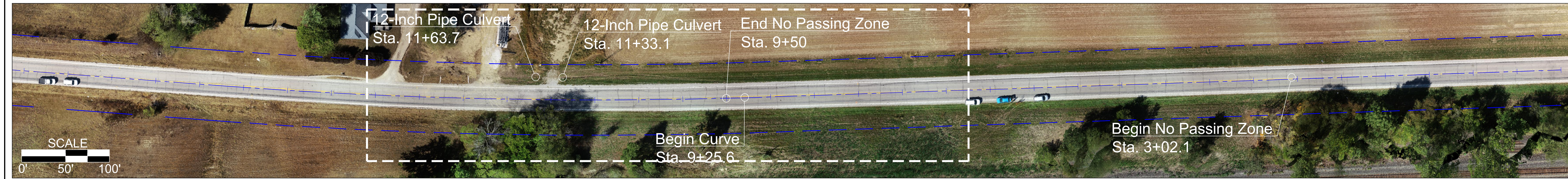
Teutopolis, IL

HWY23MH017

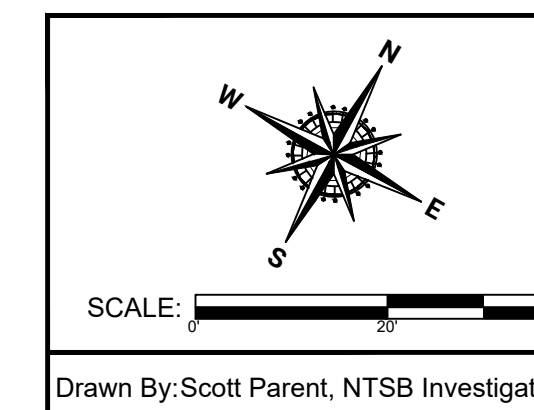
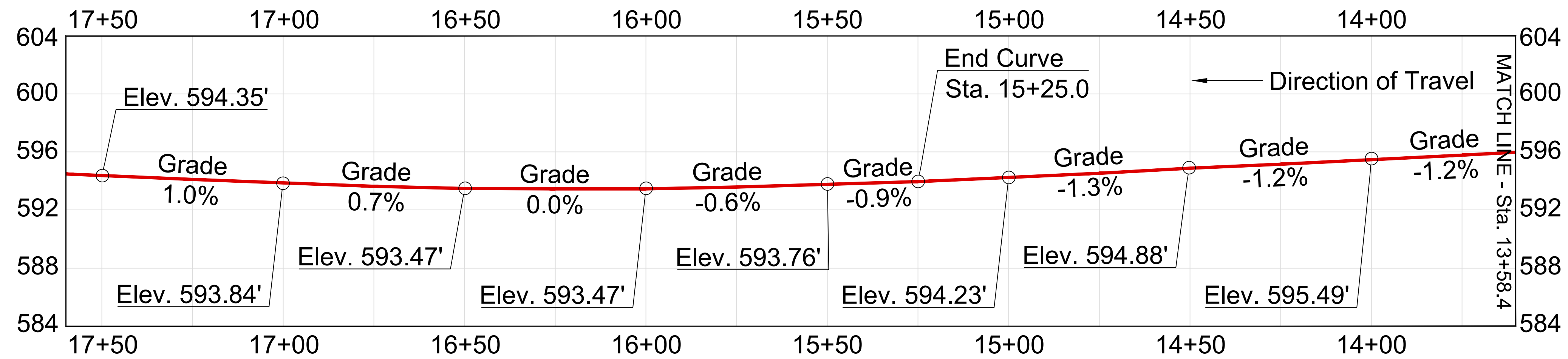
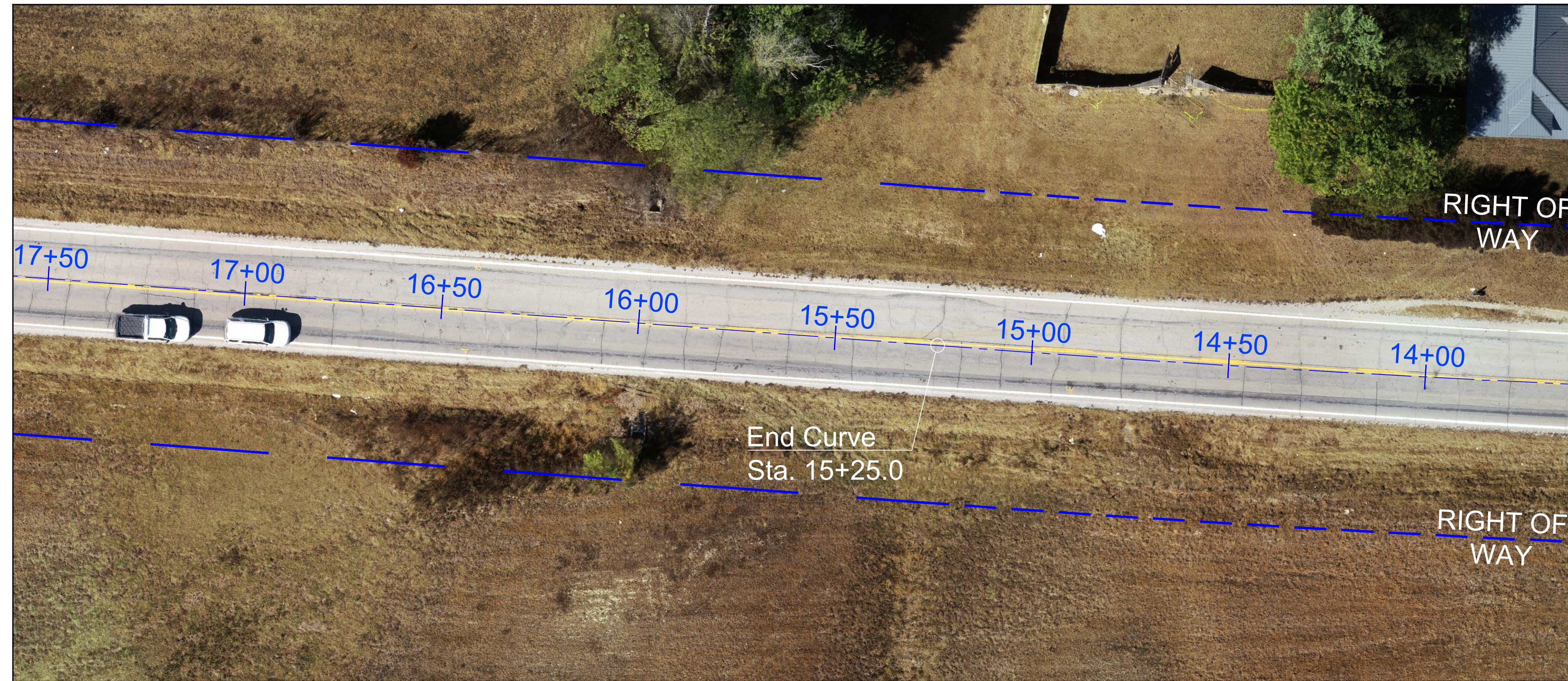
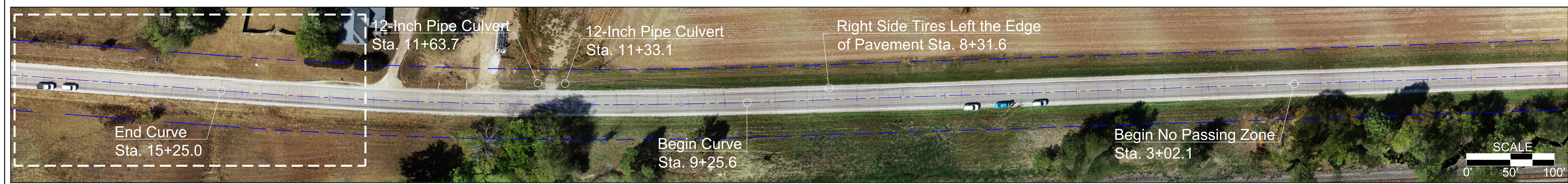
(4 pages)



NATIONAL TRANSPORTATION SAFETY BOARD OFFICE OF HIGHWAY SAFETY		
HWY23MH017 Teutopolis, Effingham County, Illinois September 29, 2023 8:41 p.m. CDT		
Horizontal/Vertical Alignment (0+00 to 6+75)		SHEET NO. 1 of 3



	NATIONAL TRANSPORTATION SAFETY BOARD OFFICE OF HIGHWAY SAFETY		
	HWY23MH017 Teutopolis, Effingham County, Illinois September 29, 2023 8:41 p.m. CDT		
Drawn By: Scott Parent, NTSB Investigator	Horizontal/Vertical Alignment (6+75 to 13+58.4)		SHEET NO. 2 of 3



NATIONAL TRANSPORTATION SAFETY BOARD
OFFICE OF HIGHWAY SAFETY

HWY23MH017
Teutopolis, Effingham County, Illinois
September 29, 2023
8:41 p.m. CDT

Horizontal/Vertical Alignment (13+58.4 to 17+50) SHEET NO. 3 of 3

Drawn By: Scott Parent, NTSB Investigator