



HIGHWAY FACTORS ATTACHMENT

US-40 Construction Plans

Teutopolis, IL

HWY23MH017

(7 pages)

INDEX OF SHEETS	SHEET NO	TITLE
1		TITLE SHEET
2		TYPICAL SECTIONS
3		SIGNATURES, GENERAL NOTES, AND QUANTITIES
4-14		PLAN & PROFILE S.B.I. SECTION (J.G.I) WRS
15		STANDARD 1666-3 (STANDARD SYMBOLS)
15		2300 FLAGMAN TRAFFIC CONTROL SIGN
16		2117-1 BITUMINOUS PATCHING DETAIL
17		2290-1 STANDARD DESIGN TRAFFIC CONTROL DEVICES
18		2290-1 " " " "
19		2303-1 STANDARD DESIGN TRAFFIC CONTROL DEVICES
20		2304-1 " " " "
21		2305-1 " " " "
22		2306-1 " " " "
23		2309-1 " " " "
24		2311-1 " " " "
25		2312-1 " " " "
26		STANDARD 1914-5 STANDARD DESIGN FOR TYPE 'B' GUTTER
26 A		STANDARD 2143-2 STANDARD DESIGN WIDTH TRANSITION
26 B		" 2239-2 WIDENING AND SHOULDERS FOR PAVEMENT RESURFACING
26 C		" 2323 " " " "

STATE OF ILLINOIS

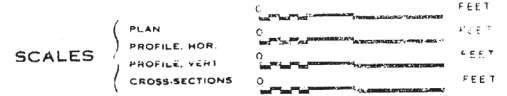
DEPARTMENT OF PUBLIC WORKS AND BUILDINGS

DIVISION OF HIGHWAYS

PLANS FOR PROPOSED STATE BOND ISSUE HIGHWAY

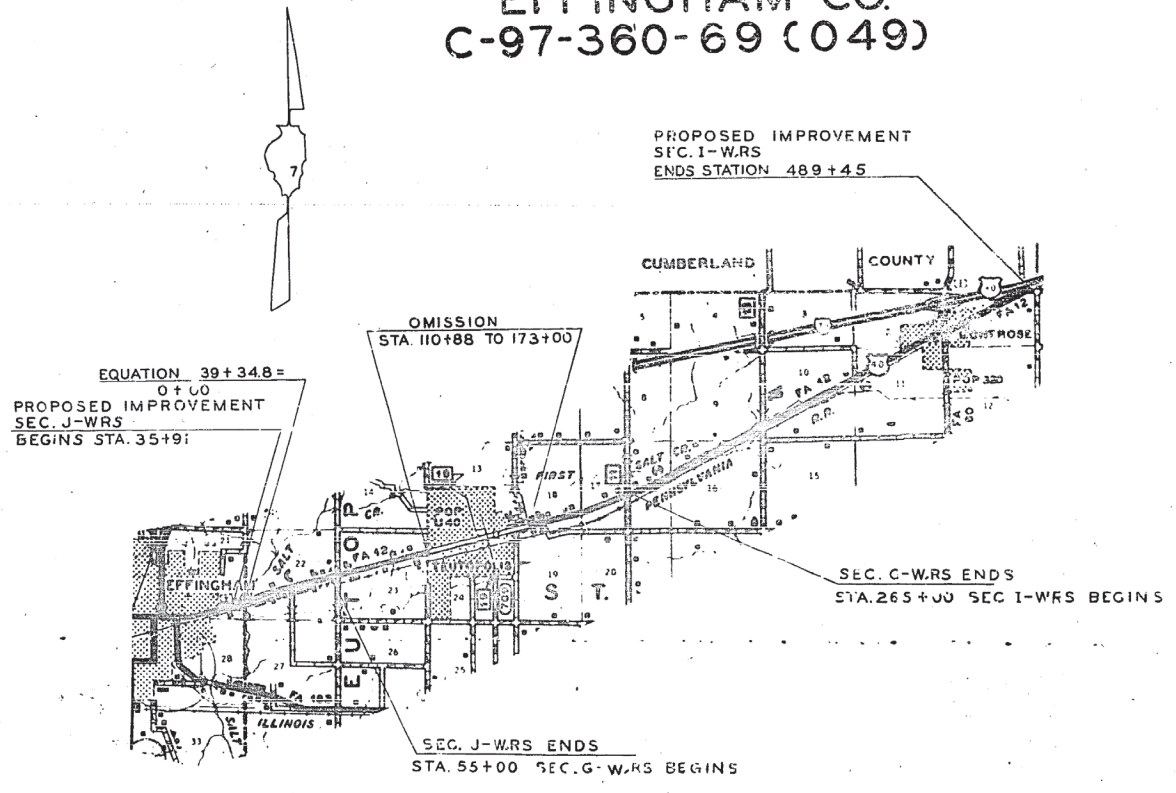
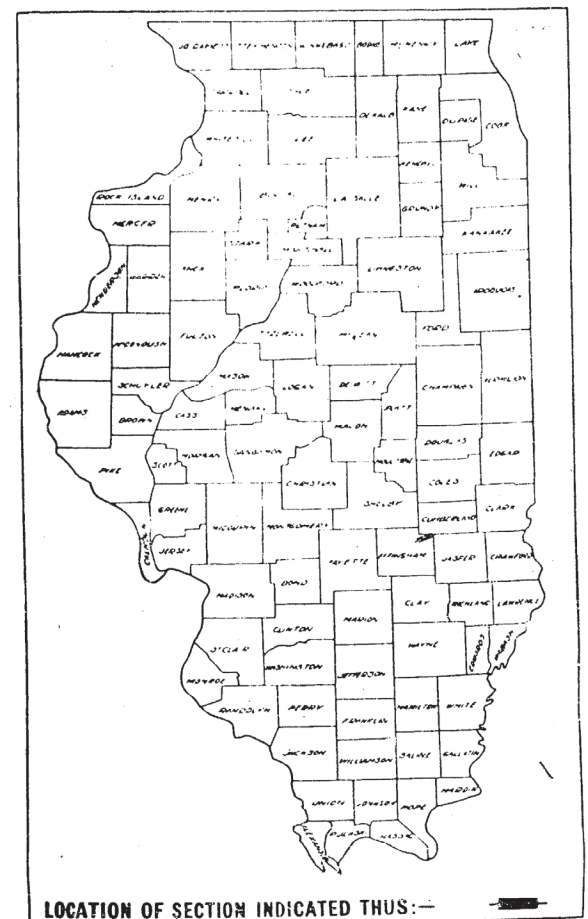
SECTION	COUNTY	TOTAL SHEETS	SHEET NO.
(J.G.I) WRS #	EFFINGHAM	26	1

* STATE ONLY
P-97-371-69 (049)



ANY REFERENCE TO A STANDARD IN THESE PLANS SHALL BE INTERPRETED TO MEAN THE EDITION AS INDICATED BY THE SUB-NUMBER LISTED IN THE INDEX OF SHEETS, OR THE COPY OF THE STANDARD INCLUDED IN THESE PLANS.

S.B.I. ROUTE II (U.S. 40)
SEC. (J.G.I) WRS
EFFINGHAM CO.
C-97-360-69 (049)

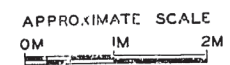


NET LENGTH TO BE IMPROVED

SEC. J-WRS	= 5843.8' = 1.107 MI.
SEC. G-WRS	= 14788.0' = 2.801 MI.
SEC. I-WRS	= 22,445.0' = 4.251 MI.
TOTAL	43,075.8' = 8.159 MI.

GRDS 5 LENGTH = 49,282.8' = 9.335 MI.

DESIGN DESIGNATION
500(90)-C-40 (CB-20)



STATE OF ILLINOIS DEPARTMENT OF PUBLIC WORKS AND BUILDINGS DIVISION OF HIGHWAYS	
SUBMITTED	Jan 29 1970
EXAMINED	Feb 11 1970
PASSED	Feb 11 1970
APPROVED	Feb 11 1970
APPROVED	Feb 11 1970

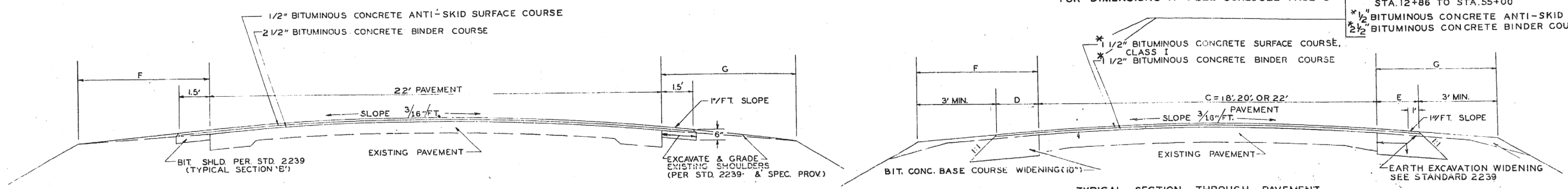
CONTRACT NO. 26626

1970 Resurfacing Plans



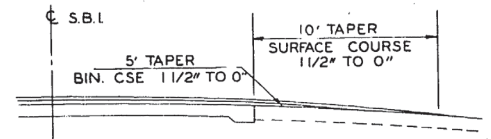
FOR DIMENSIONS A-G SEE SCHEDULE PAGE 3

STA. 12+86 TO STA. 55+00
 * 1/2" BITUMINOUS CONCRETE ANTI-SKID SURFACE COURSE
 * 2 1/2" BITUMINOUS CONCRETE BINDER COURSE

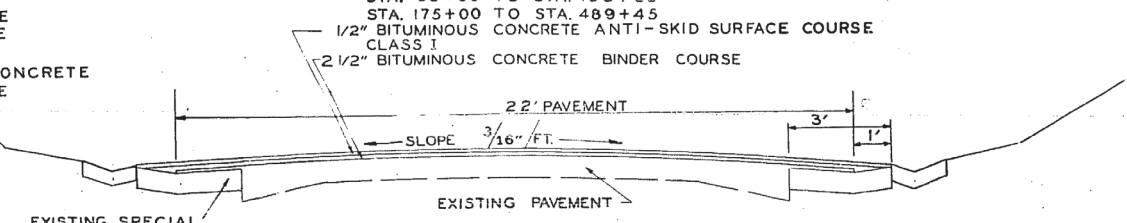
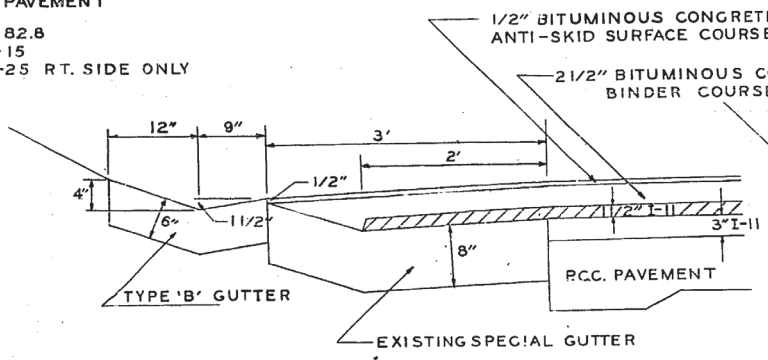


TYPICAL SECTION THROUGH PAVEMENT
 STA. 35+91 TO STA. 38+82.8
 STA. 0+52 TO STA. 1+15
 STA. 1+15 TO STA. 1+25 RT. SIDE ONLY

TYPICAL SECTION THROUGH PAVEMENT
 STA. 55+00 TO STA. 108+88
 STA. 175+00 TO STA. 489+45
 1/2" BITUMINOUS CONCRETE ANTI-SKID SURFACE COURSE CLASS I
 2 1/2" BITUMINOUS CONCRETE BINDER COURSE

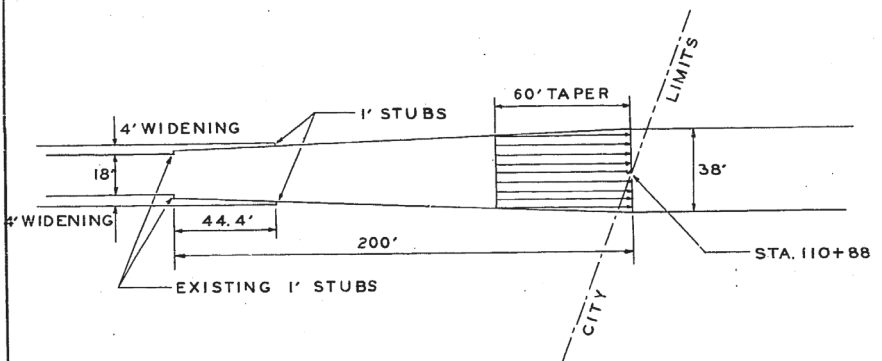


TYPICAL SECTION OF FEATHER ON STREETS, CROSSROADS, & COMMERCIAL ENTRANCES.

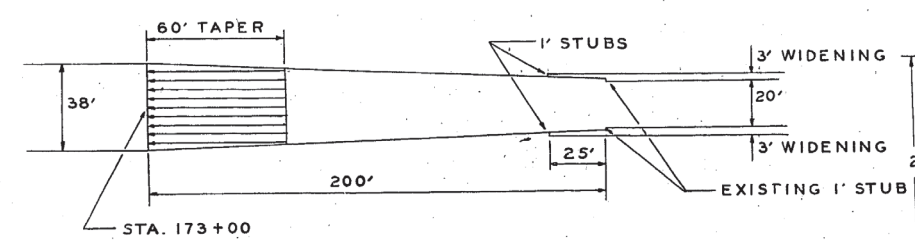


TYPICAL SECTION THROUGH PAVEMENT WITH EXISTING GUTTER
 STA. 1+15 TO STA. 1+25 LT. SIDE ONLY
 STA. 1+25 TO STA. 12+86 LT. & RT. SIDE

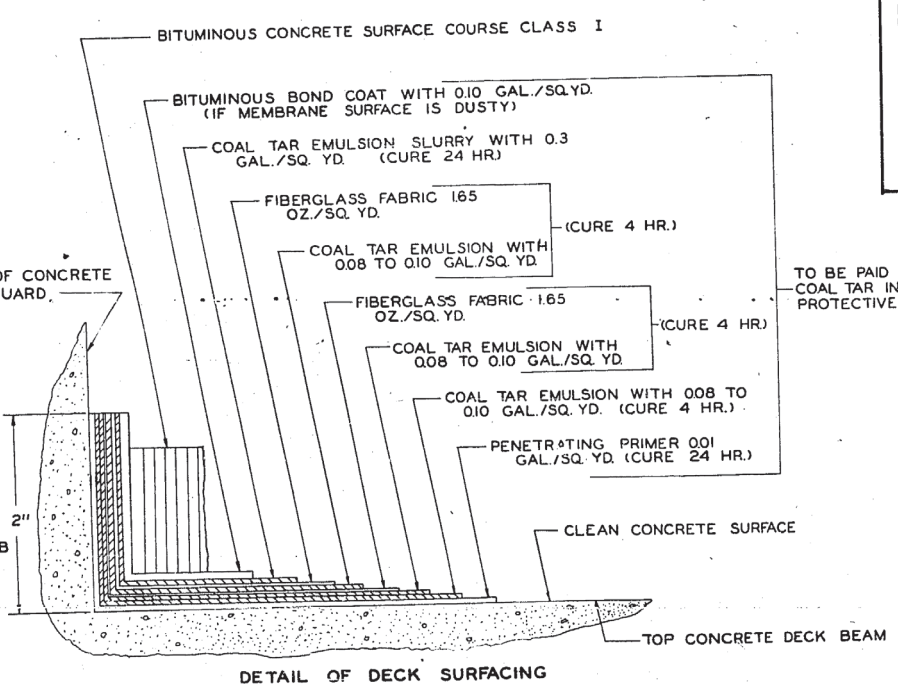
THE THICKNESS OF BITUMINOUS MIXTURE SHOWN ON THE PLANS IS THE NOMINAL THICKNESS. DEVIATIONS FROM THE NOMINAL THICKNESS WILL BE PERMITTED WHEN SUCH DEVIATIONS OCCUR DUE TO IRREGULARITIES IN THE EXISTING SURFACE ON WHICH THE BITUMINOUS MIXTURE IS PLACED.



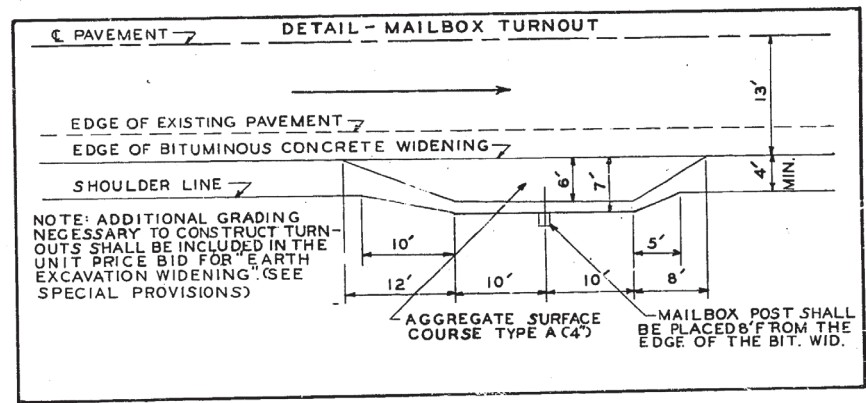
PLAN VIEW WEST END OF TEUTOPOLES



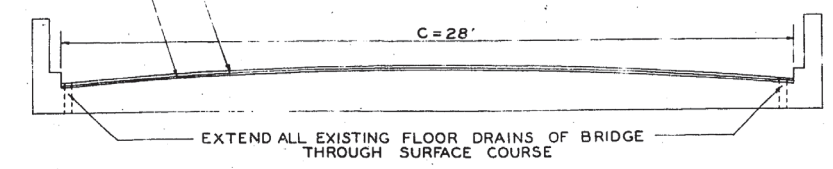
PLAN VIEW EAST END OF TEUTOPOLES



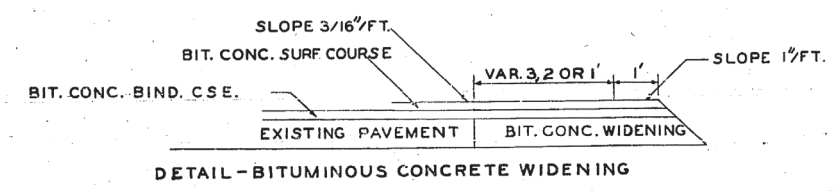
DETAIL OF DECK SURFACING



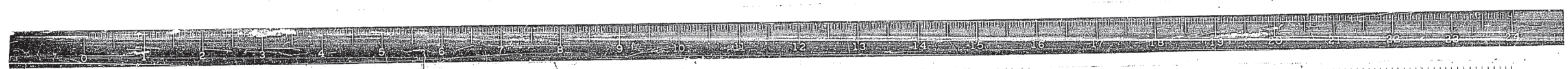
TO BE PAID FOR AS: WHEN DIRECTED BY THE ENGINEER THE EXISTING BITUMINOUS OVERLAY SHALL BE REMOVED. A COAL TAR INTERLAYER PROTECTIVE COAT SHALL BE CONSTRUCTED AND THE BRIDGE RESURFACED WITH 1/2" BITUMINOUS CONCRETE ANTI-SKID SURFACE COURSE



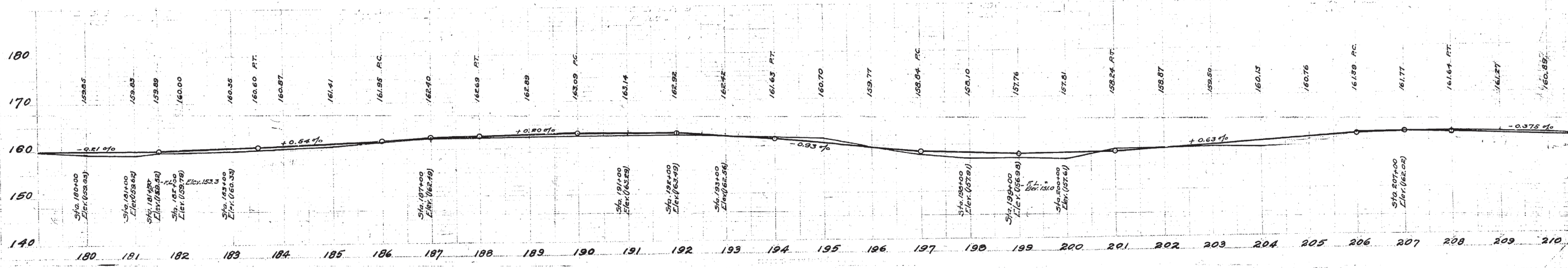
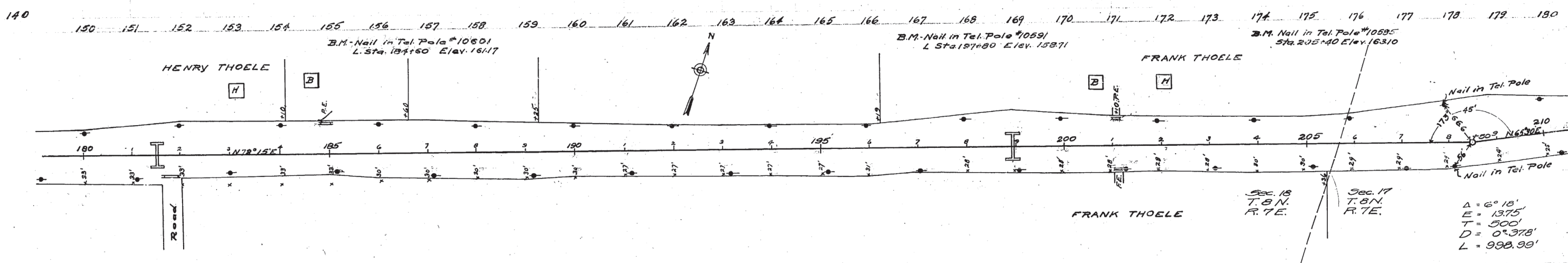
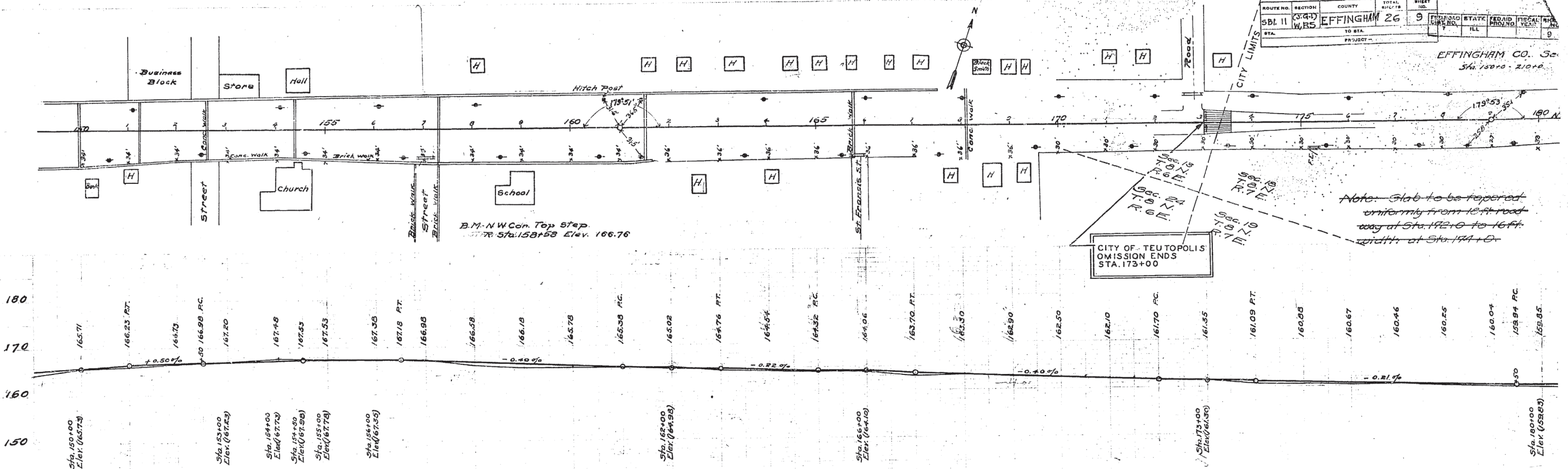
TYPICAL SECTION THROUGH BRIDGE
 STA. 38+82.8 TO STA. 0+52



DETAIL - BITUMINOUS CONCRETE WIDENING



EFFINGHAM CO. 5c
Sta. 150+00 - 210+00



B.M. NAIL IN TEL POLE
R STA. 213+20 ELEV. 159.59

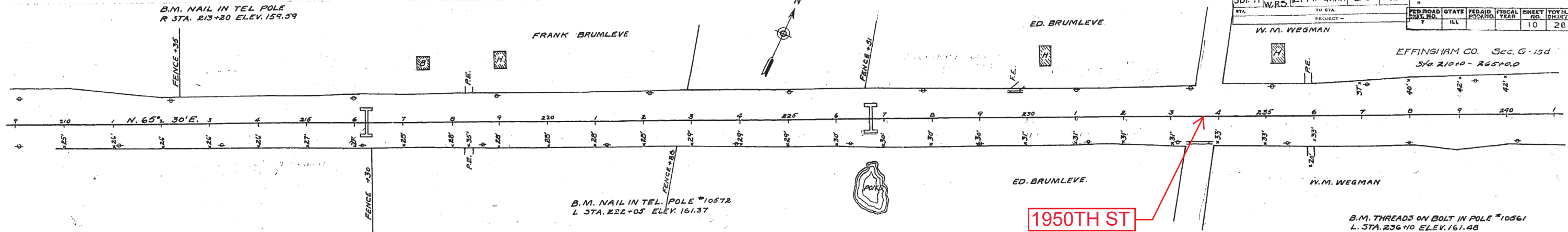
FRANK BRUMLEVE

ED. BRUMLEVE

SBI. 11	(S.G.)	EFFINGHAM 26	10
STA.	TO STA.	PROJECT	
WRS			
FED. ROAD DIST. NO.	STATE	FED. AID FISCAL YEAR	SHEET NO. TOTAL SHEETS
7	ILL		10 26

W. M. WEGMAN

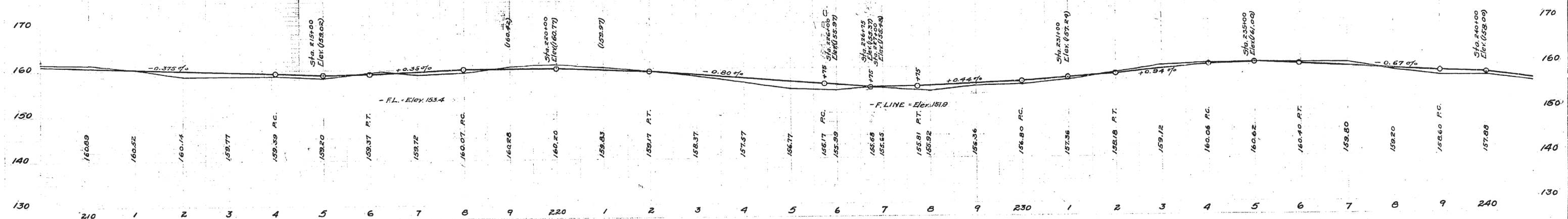
EFFINGHAM CO. Sec. G-15d
Sta 210+0 - 265+00



B.M. NAIL IN TEL. POLE #10572
L. STA. 222+05 ELEV. 161.37

1950TH ST

B.M. THREADS ON BOLT IN POLE #10561
L. STA. 236+10 ELEV. 161.48

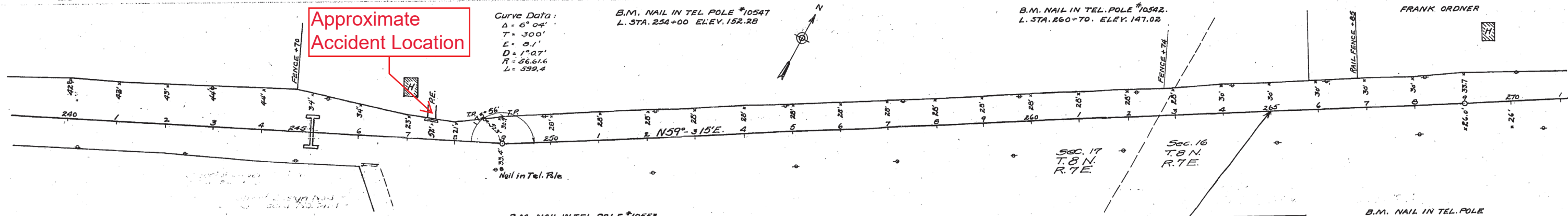


Approximate Accident Location

Curve Data:
 $\Delta = 6^{\circ}04'$
 $T = 300'$
 $E = 8.1'$
 $D = 1^{\circ}07'$
 $R = 56.616$
 $L = 599.4$

B.M. NAIL IN TEL. POLE #10547
L. STA. 234+00 ELEV. 152.28

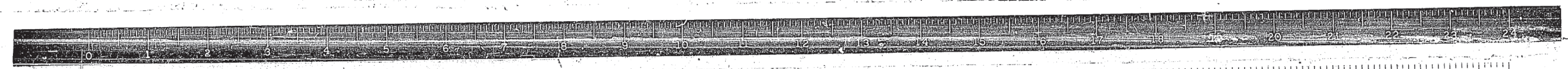
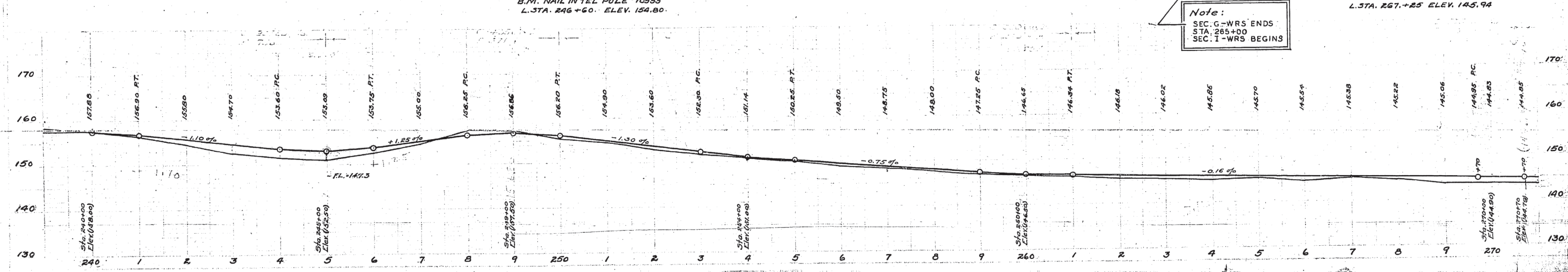
B.M. NAIL IN TEL. POLE #10542
L. STA. 260+70 ELEV. 147.02



B.M. NAIL IN TEL. POLE #10553
L. STA. 246+60 ELEV. 154.80

B.M. NAIL IN TEL. POLE
L. STA. 267+25 ELEV. 145.94

Note:
 SEC. G-WRS ENDS
 STA. 265+00
 SEC. I-WRS BEGINS



REVISION	DATE	BY	REASON	SHEET NO.	TOTAL SHEETS
1				11	26

B.M. Threads of Bolt Tel. Pole #10532
L. Sta. 278+65 Elev. 145.70

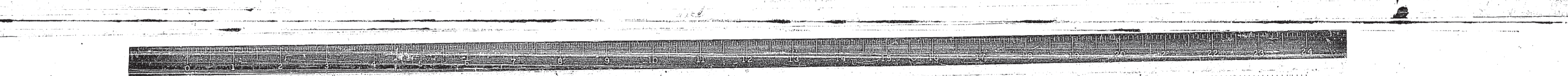
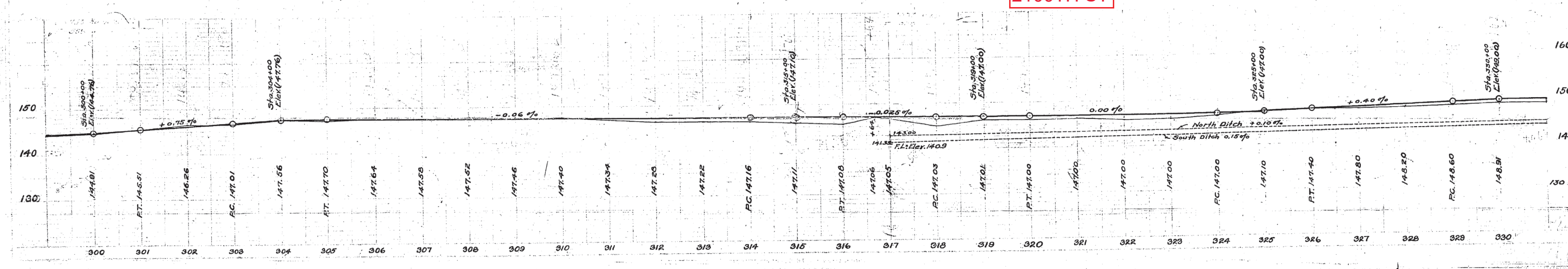
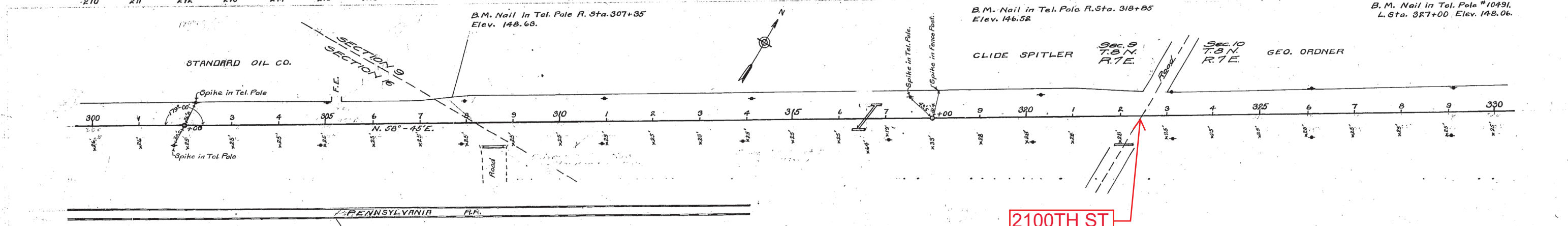
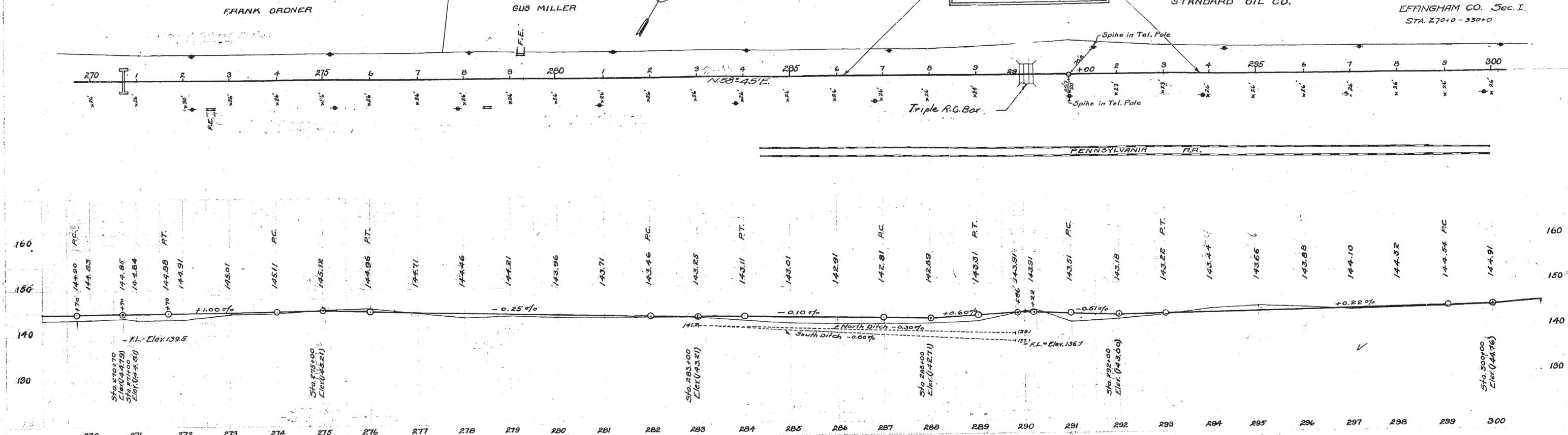
B.M. Nail in Tel. Pole R. Sta. 284+90
Elev. 142.92

B.M. Nail in Tel. Pole #10515
L. Sta. 295+60 Elev. 144.01

EXISTING 22' PAVEMENT
STA. 286+20 TO STA. 293+80

STANDARD OIL CO.

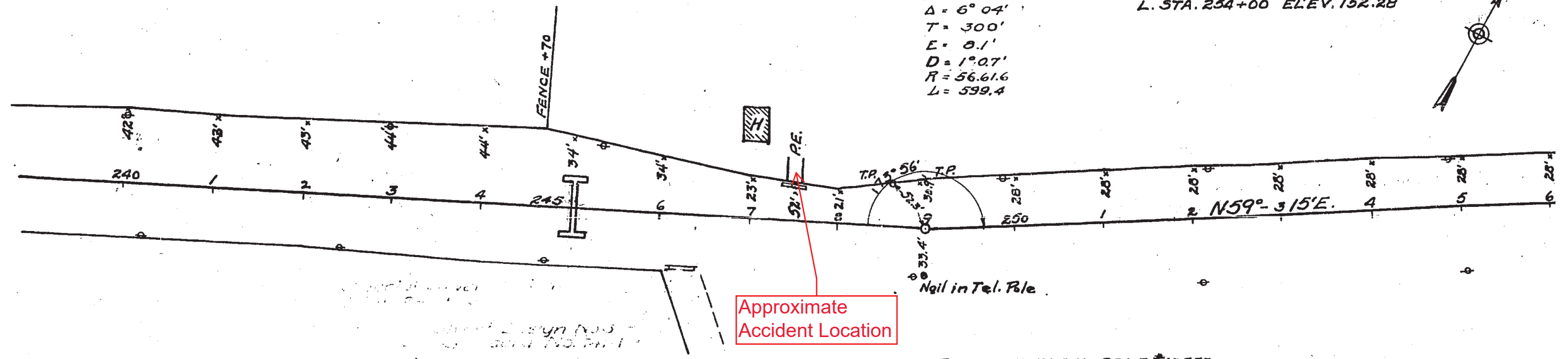
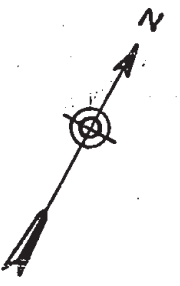
EFFINGHAM CO. Sec. I.
Sta. 270+0 - 330+0



210 1 2 3 4 5 6 7 8 9 220 1 2 3 4 5 6

Curve Data:
 $\Delta = 6^\circ 04'$
 $T = 300'$
 $E = 8.1'$
 $D = 1^\circ 07'$
 $R = 56.61.6$
 $L = 599.4$

B.M. NAIL IN TEL POLE #10547
 L. STA. 254+00 ELEV. 152.28



Approximate Accident Location

B.M. NAIL IN TEL POLE #10553
 L. STA. 246+60 ELEV. 154.80

