



HIGHWAY FACTORS ATTACHMENT

Illinois DOT Statewide Truck Parking Study dated July 30, 2020

Highland, IL

HWY23MH015

(19 pages)



Illinois Department
of Transportation

IDOT Statewide Truck Parking Study

ISFAC Meeting
July 30, 2020

Agenda



Study Purpose



Outreach Efforts



IDOT Parcel ROW Analysis – Preliminary Results



Questions



Study Purpose

- ❑ Development a vision of IDOT's role on truck parking
- ❑ Identify options to increase supply of truck parking
- ❑ Explore options for private sector engagement
- ❑ Identify Best Practices



Outreach Efforts to Date



Outreach Efforts To Date



Survey Results



Non-COVID 19 Key Takeaways

Parking is not often available at most Illinois truck stop

Difficulty locating parking in the Chicago Region

More need for short term parking solutions

Safety and/or Security at the Facility as most important factor

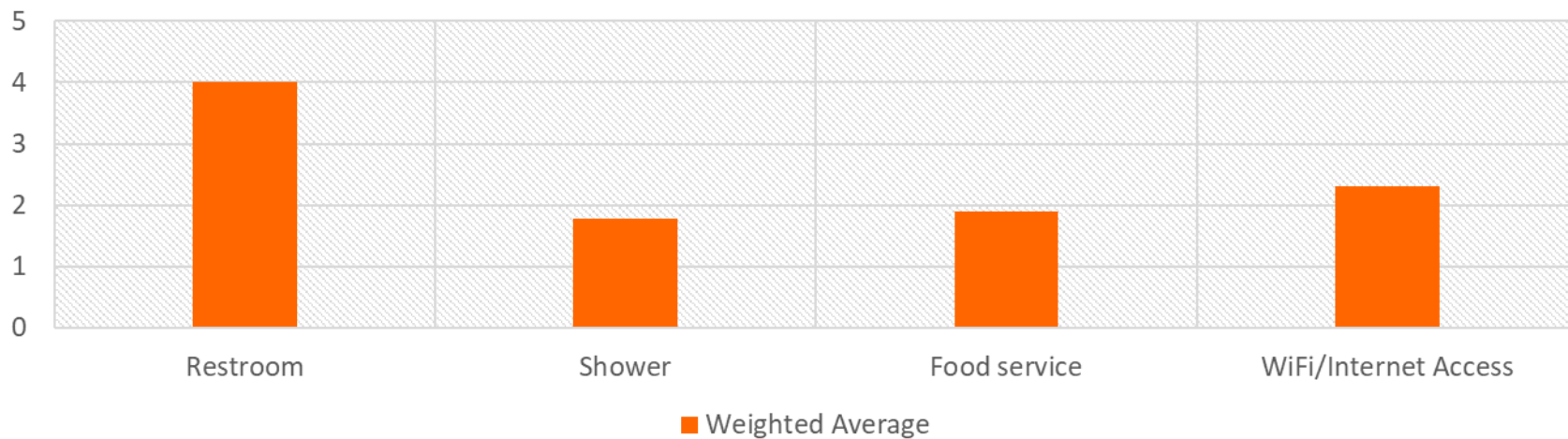
COVID 19 Key Takeaways

Has impacted ability to deliver cargo

No change in truck parking space availability

ISFAC Survey-Amenity Question Results

If amenities are provided at a truck parking facility, how would you rank the importance of the following on a scale of 1 to 4, with 1 as the Least Important and 4 as the Most Important?



IDOT Parcel ROW Analysis – Preliminary Results



Overview of IDOT Parcel ROW Analysis

- Data driven methodology to screen IDOT owned parcels for suitability for:
 - 1) Expansion of Current Facilities
 - 2) New Facility Location



Proposed Scoring Rubric – June 16, 2020



Criteria

Is the parcel greater than 2 acres in area?

Is the parcel less than 0.25 miles from an Interstate exist?

Is the parcel adjacent to an existing rest area?

Is the parcel adjacent to a weigh station?

Is the parcel adjacent to a private truck parking facility?

Is the parcel located along an Interstate segment that has a private truck parking facility that is consistently full?

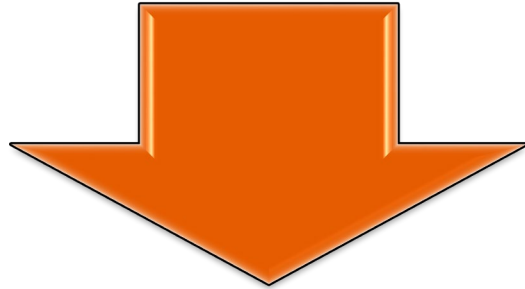
Is the parcel located along an Interstate segment that has a rest area that is utilized over capacity?

Is the parcel located along a segment with the number of fatigue related crashes involving an HCV in the top quintile of the IDOT District

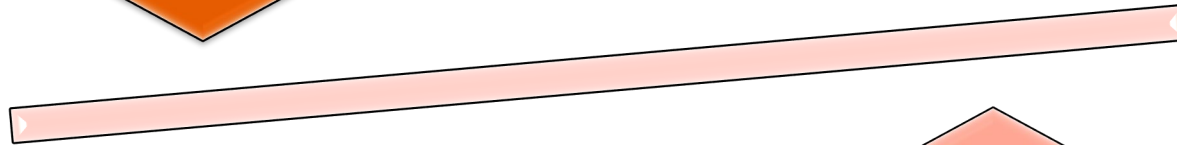
Is the parcel located along a segment with fatigue related crashes involving an HCV?

Is the parcel located along a segment with excessive rest area spacing?

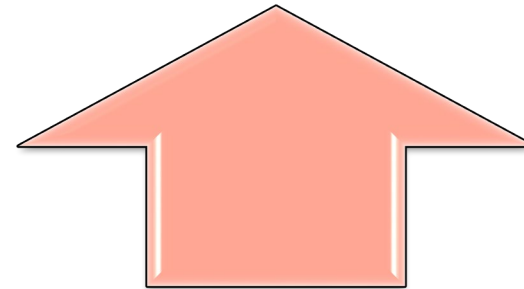
Category 1: Potential Expanded Facilities

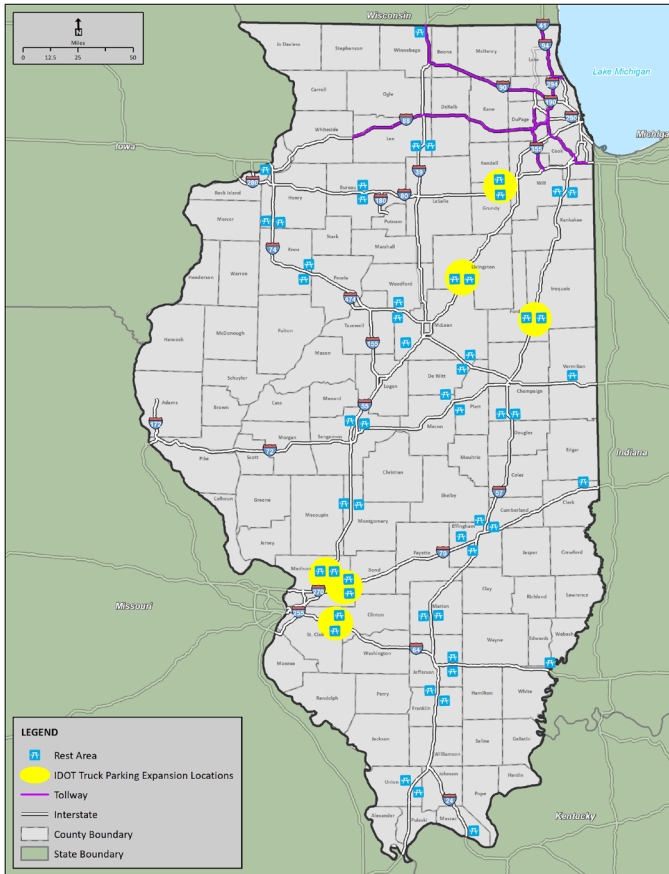


Parcel includes
existing safety
rest areas

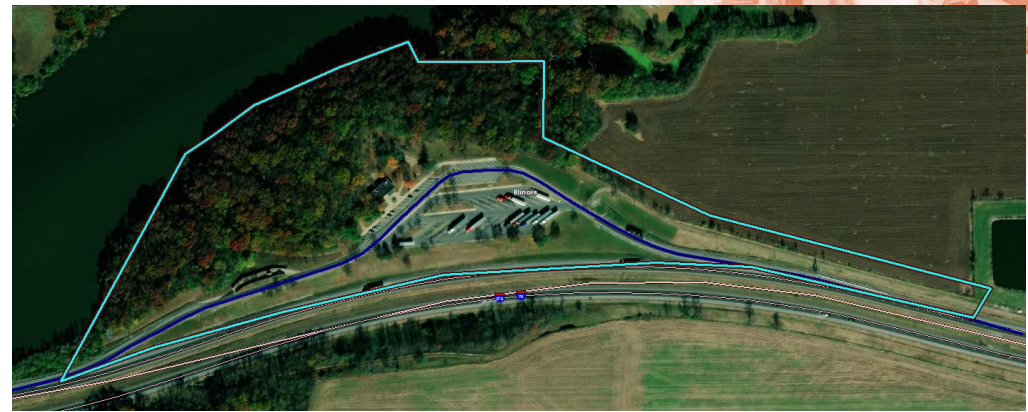


Parcel is adjacent
to existing safety
rest areas

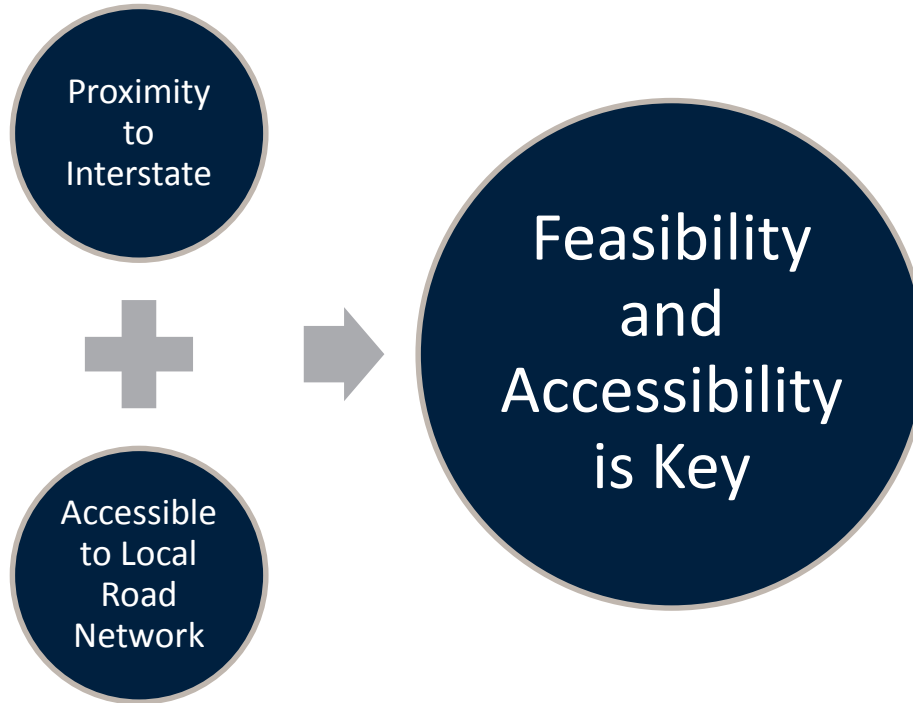


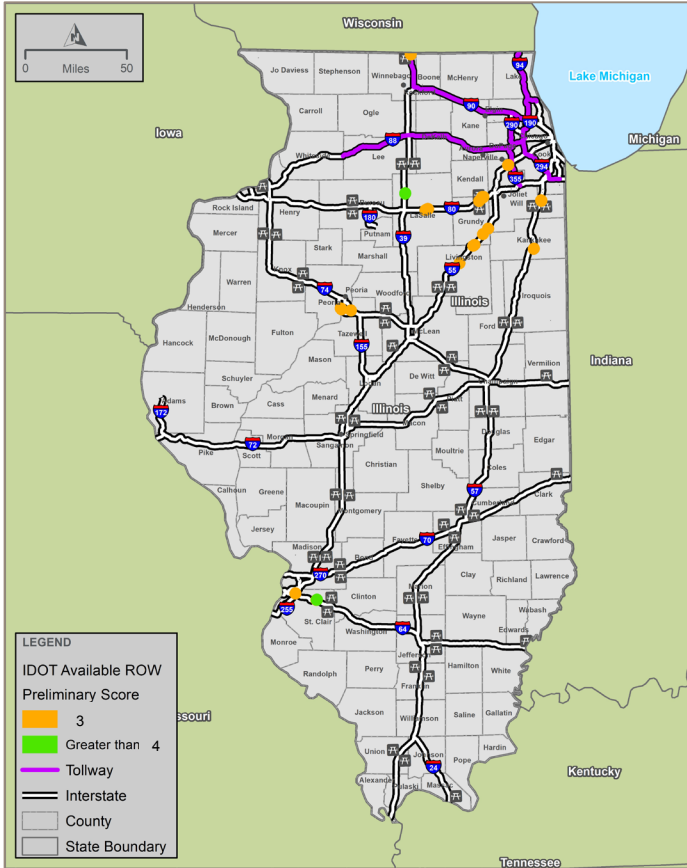


Example: Group A) Parcel includes existing safety rest area

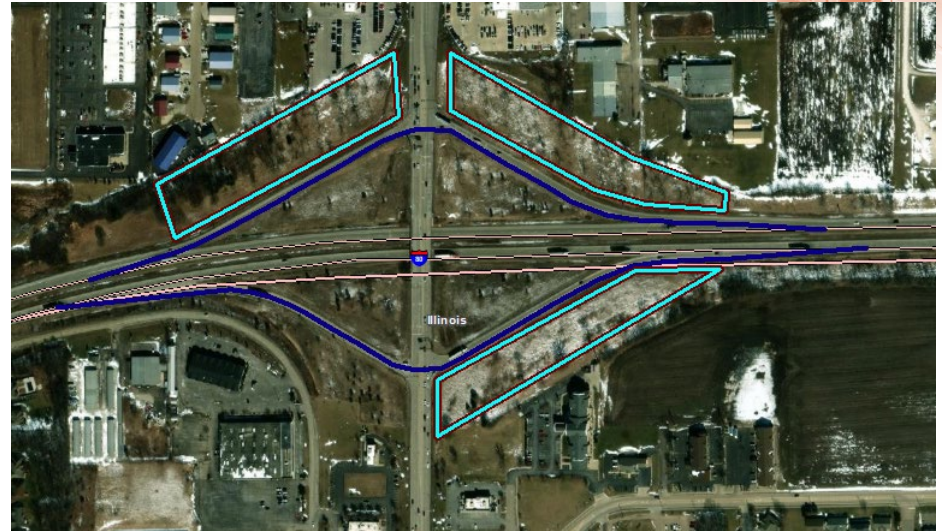


Category 2: Potential New Facilities

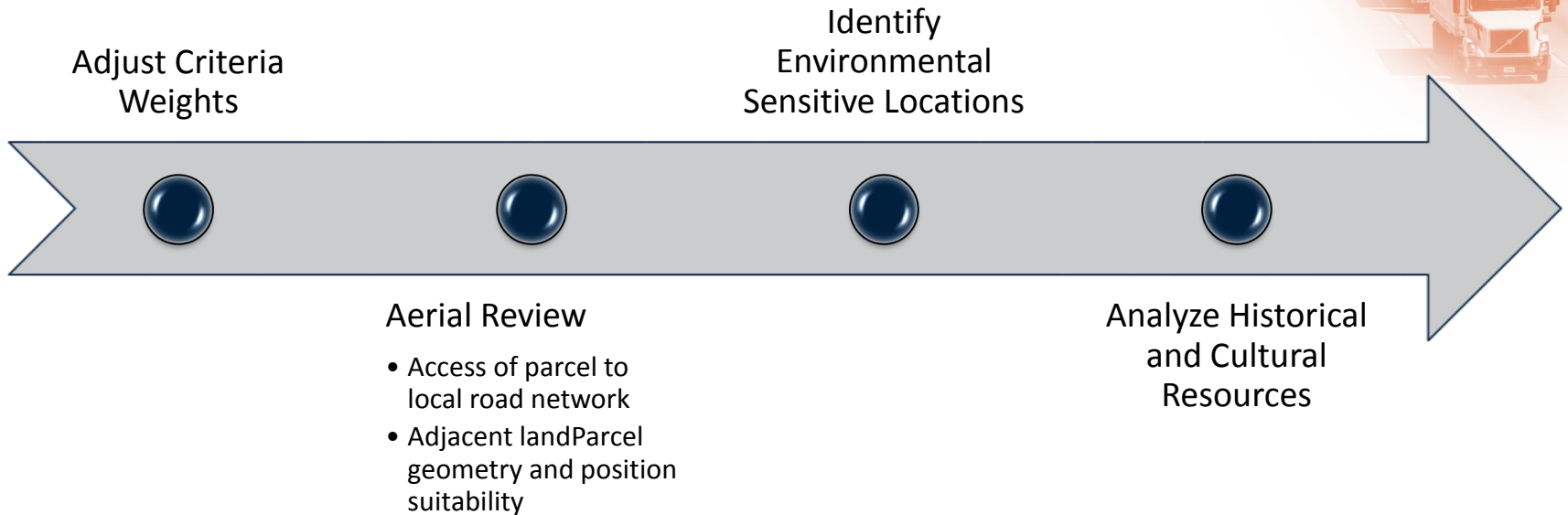




Example-Potential New Location Facilities :
 Parcel is accessible to Interstate and local road network.



Secondary Evaluation Next Steps

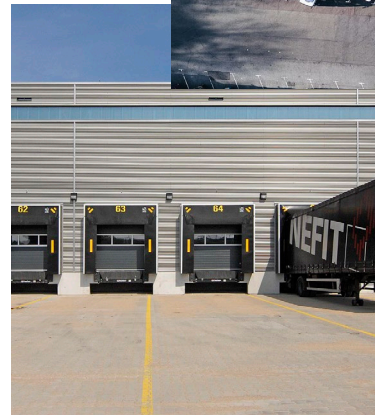
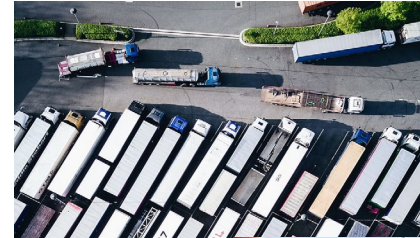


Additional Questions



Connecting Truck Parking to Planning

- MPOs Freight Plans: To what extent is truck parking discussed?
- Local Gov't Comp Plans: Is there a freight plan/component and to what extent does it address truck parking?

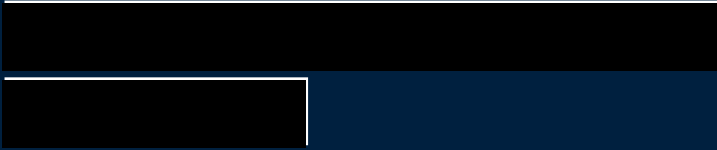


Thank You!

- Contact Info:

Mike Vanderhoof

Project Manager – IDOT



Davonna Moore

Project Manager



Jacki Murdock

Deputy Project Manager

