



**HIGHWAY FACTORS ATTACHMENT**

**IDOT US-24 Construction Plans (Contract No. 23536)**

**Rushville, IL**

**HWY24MH005**

(5 pages)

**STATE OF ILLINOIS**  
**DEPARTMENT OF PUBLIC WORKS AND BUILDINGS**  
**DIVISION OF HIGHWAYS**  
**PLANS FOR PROPOSED**  
**STATE BOND ISSUE HIGHWAY**

FEDERAL-AID ROUTE NO.	SEC.	COUNTY	TOTAL SHEETS	SHEET NO.
31	11(W,RS)	Schuyler	61	1
ILLINOIS PROJECT F-91(6)				

P-96-070-00

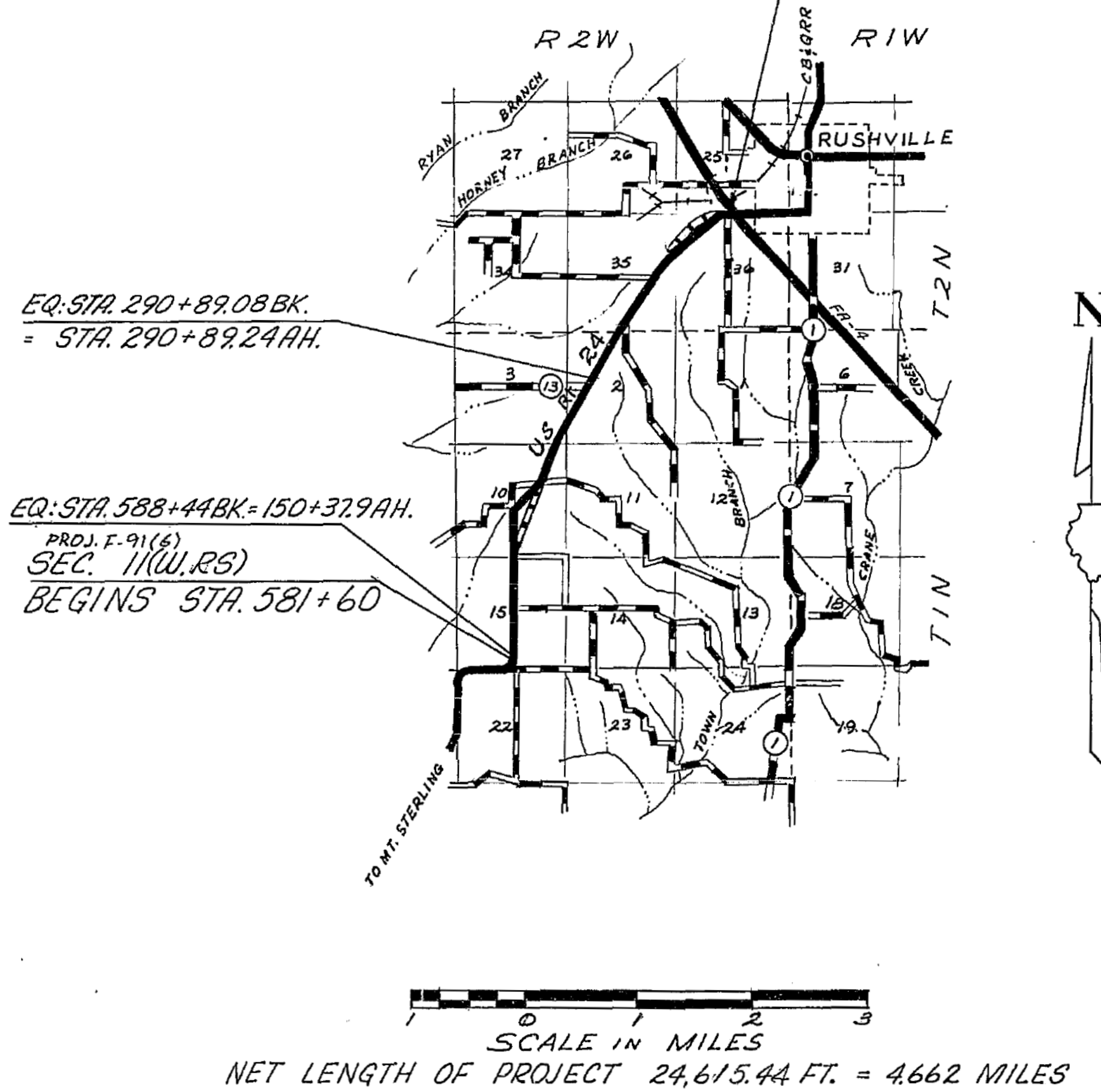
PLAN 1"=100'  
 PROFILE, HOR. 1"=100'  
 PROFILE, VERT. 1"=20'  
 CROSS-SECTIONS 1"=20'

S.B.I. 31 PROJECT NO. F 91(6)  
 SECTION 11(W, RS)  
 SCHUYLER COUNTY



LOCATION OF SECTION INDICATED THIS: —

PROJ. F-91(6)  
 SEC. 11(W,RS) ENDS  
 STA. 389+69.5 BK. = 387+71.2 AH.

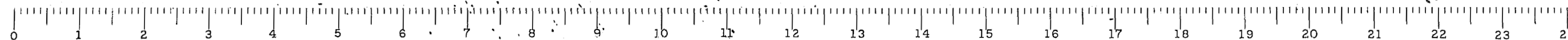


STATE OF ILLINOIS DEPARTMENT OF PUBLIC WORKS AND BUILDINGS DIVISION OF HIGHWAYS	
SUBMITTED	February 11, 64
EXAMINED	February 11, 64
PASSED	February 11, 64
APPROVED	February 11, 64
APPROVED	February 11, 64

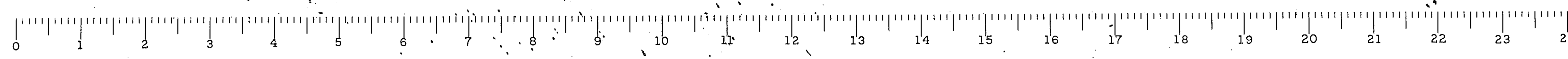
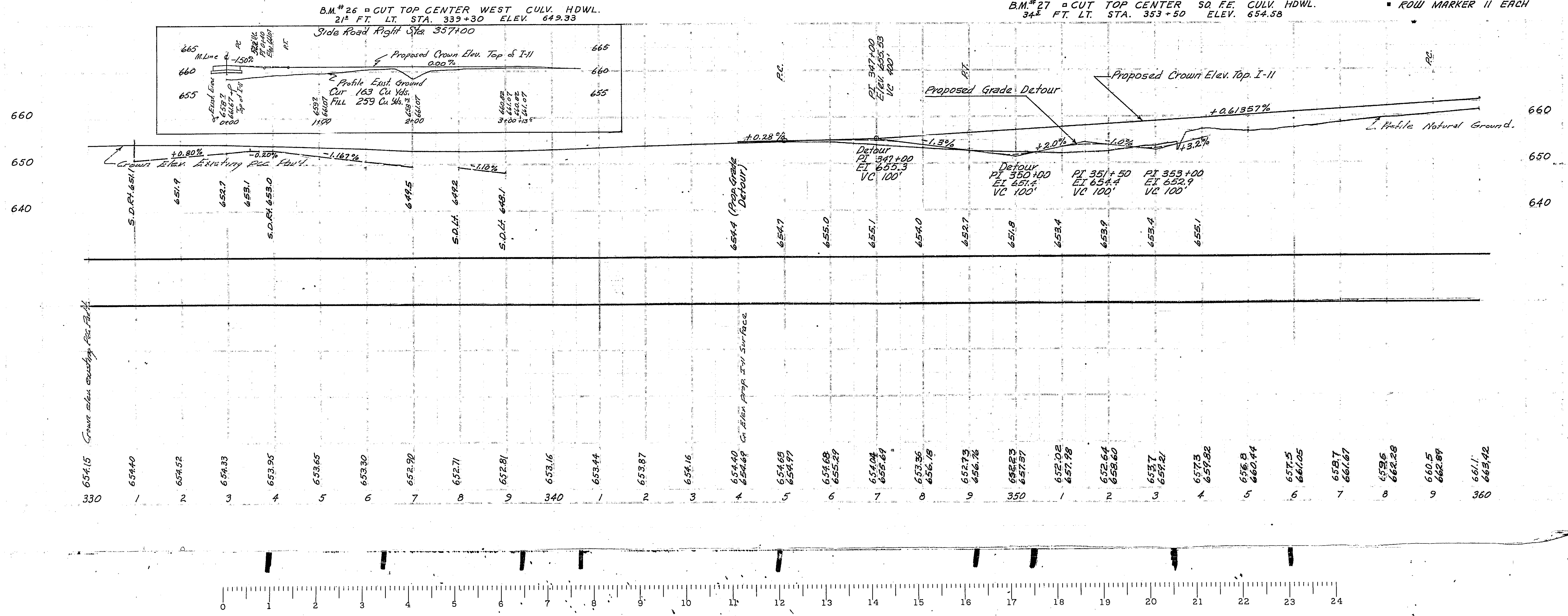
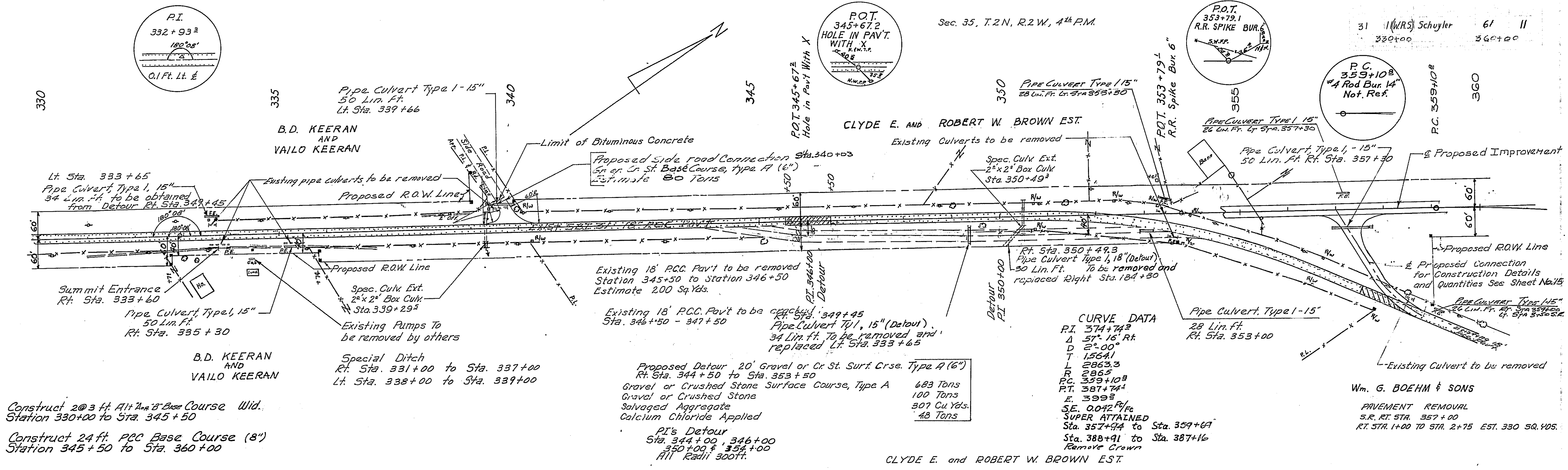
DEPARTMENT OF COMMERCE BUREAU OF PUBLIC ROADS	
APPROVED	
DIVISION ENGINEER	DATE

CONTRACT NO. 28536

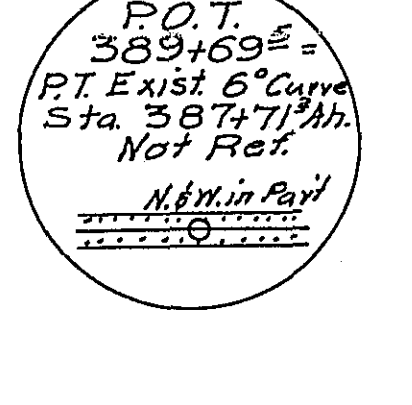
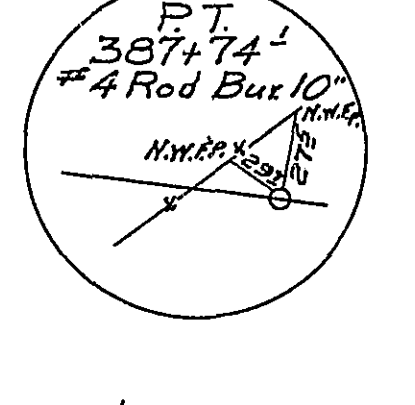
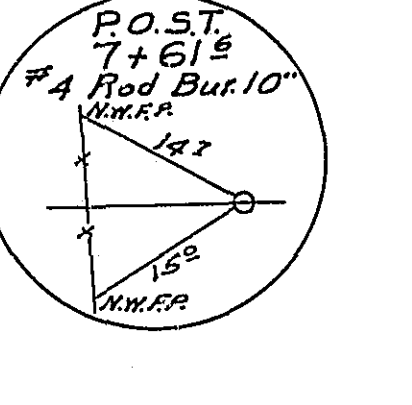
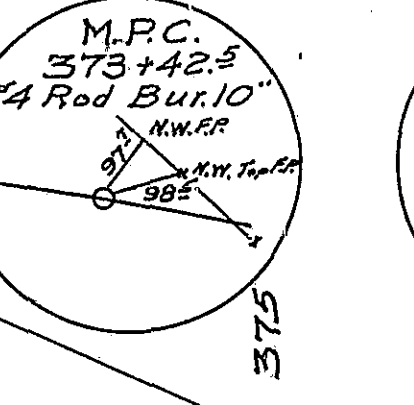
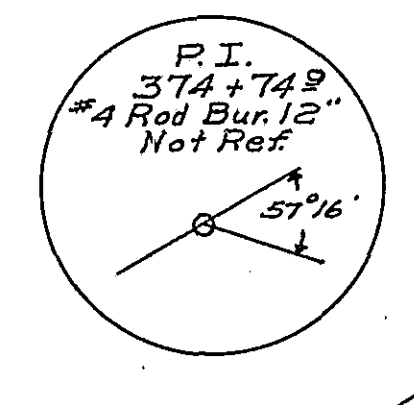
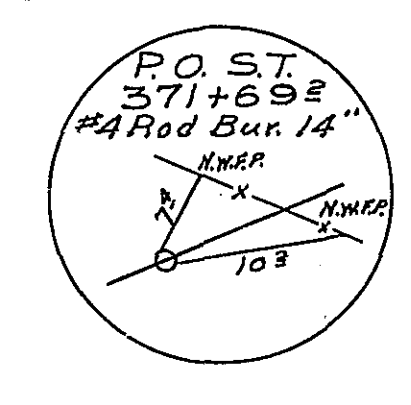
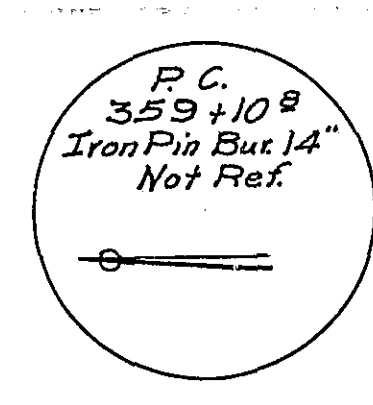
COUNTY Schuyler SECTION 11(W,RS) S.B.I. ROUTE 31











Steel Plate Beam Guard Rail  
 Lt. Sta. 380+78 - 383+30 187.5 Lin. Ft.  
 Rt. Sta. 381+40 - 383+21.5 182.5 Lin. Ft.

Delimiters  
 Lt. Sta. 380+60 One Each  
 Rt. Sta. 381+30 One Each  
 Rt. Sta. 383+25 - 383+50 2 Each

Pavement Removal  
 Rt. Sta. 384+67 to Sta. 388+78 Est. 745 Sq. Yds.

Note: For Construction Details and quantities Station 387+69.34 to 389+67.5 & S.R. Sta. 384+64.5 See Sheet #16

CLYDE E. AND ROBERT W. BROWN EST.

MINNIE PERSINGER

WILLIAM ROBERT BLACK & ALVINA S. BLACK

SCRIPPS PARK

Sec. 35 Sec. 25 T.2N., R.2W., 4<sup>th</sup> PM.

Prop. ROW Line  
 Construct 24" x 4" RC Concrete Base Course (6") Station 360+00 to 387+69.34

CURVE DATA

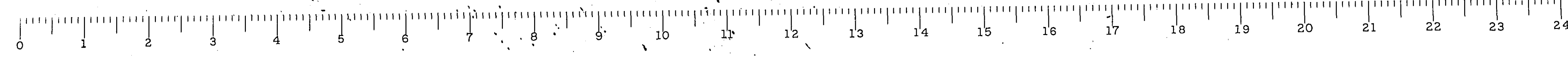
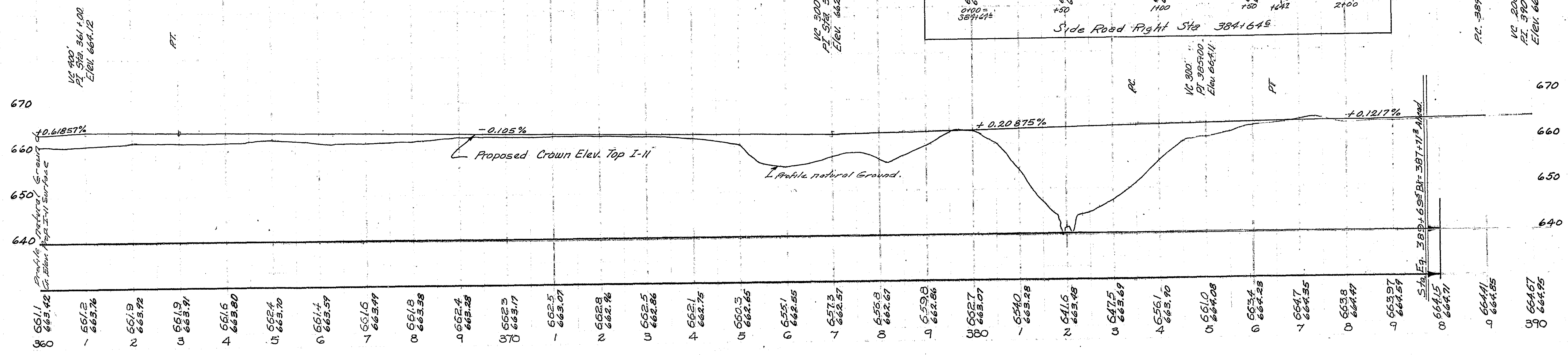
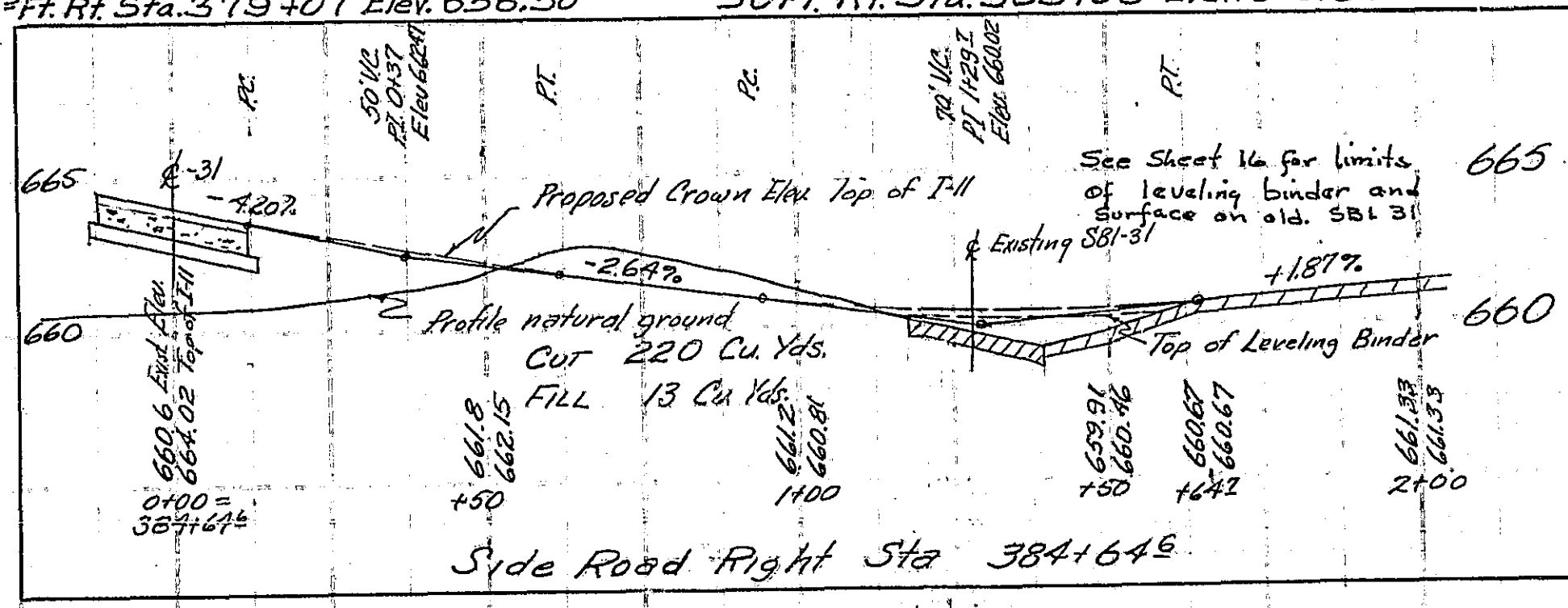
P.I.	374+74.9
D	57'-16" Rt.
T	2° 00'
L	1564.1
E	2863.33
P.C.	359+10.8
M.P.C.	373+42.47
P.T.	387+74.13
R	2865

SUPER ATTAINED  
 SE 0.042%/ft.  
 Sta 357+74 to Sta 359+69  
 Sta 388+91 to Sta 387+14  
 Remove Crown

BM #28 Bent 60d Sph. in Flag Post  
 71ft. Lt. Sta. 374+05 Elev. 660.20

BM #29 Hor. RR. Sph. in 30" Elm  
 99ft. Rt. Sta. 379+07 Elev. 656.50

BM #29A 60d Sph. in 15" Tree  
 50ft. Rt. Sta. 383+08 Elev. 650.64



Scale & Part 12-31  
 1/2" = 100'  
 1/4" = 50'

Map & Part 12-31  
 1/2" = 100'  
 1/4" = 50'

31 (W.R.S) Schuyler 61 12  
 360+00 390+00

389+46  
 387+74.2  
 389+69.2

Existing I-II Surf.  
 Const. as FA, RL, Section 87-1

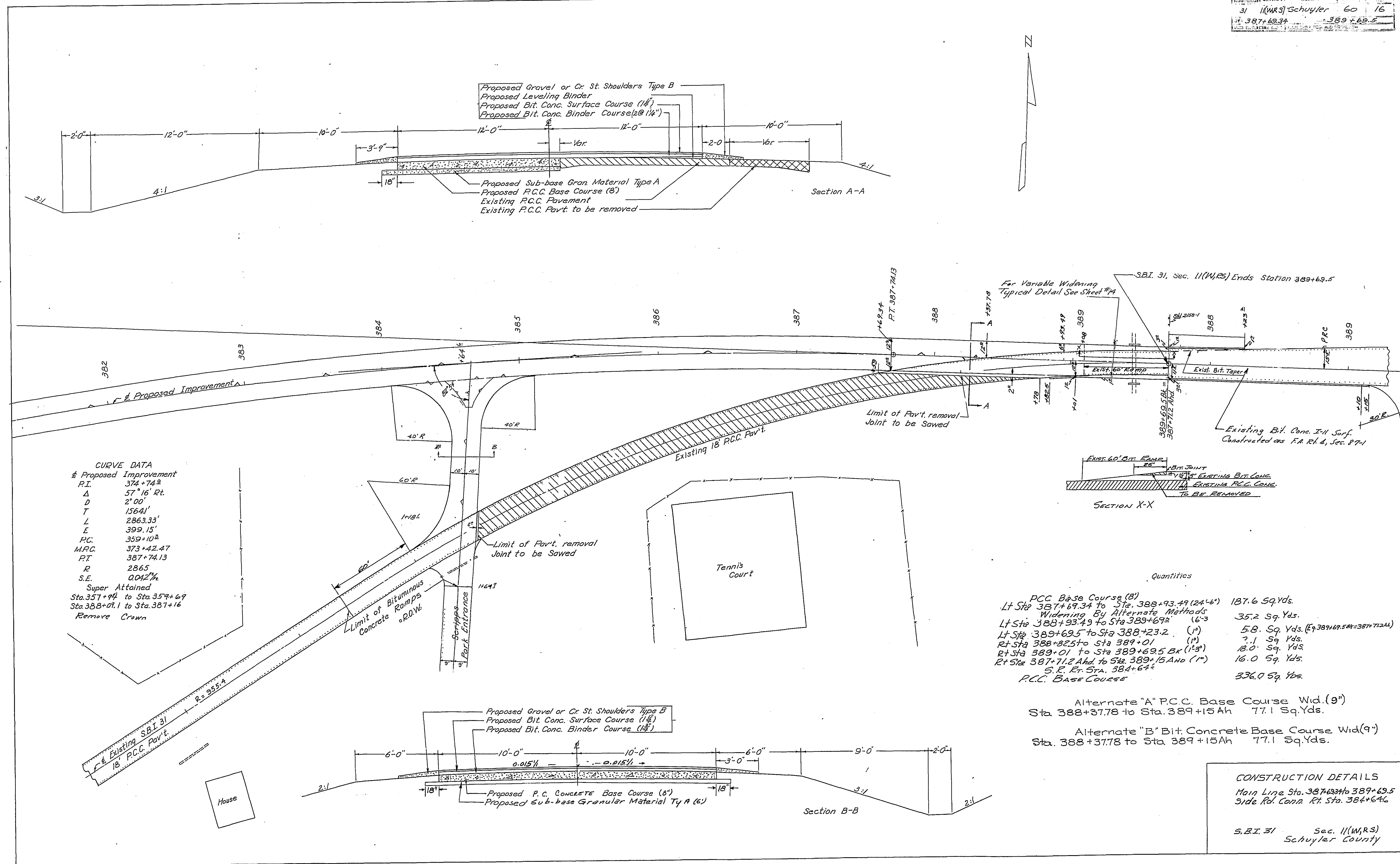
RC 389+00

1/2 200'  
 RL 390+00  
 Elev. 664.72

664.15  
 664.71

664.41  
 664.85

664.67  
 664.95



**CURVE DATA**  
 & Proposed Improvement

P.I.	374+74.2
Δ	57° 16' Rt.
D	2° 00'
T	156.41'
L	2863.33'
E	399.15'
P.C.	359+10.2
M.P.C.	373+42.47
P.T.	387+74.13
R	2865'
S.E.	0.042%

Super Attained  
 Sta. 357+74 to Sta. 359+69  
 Sta. 388+01.1 to Sta. 387+16  
 Remove Crown

**Quantities**

P.C.C. Base Course (8")	187.6 Sq. Yds.
Lt. Side 387+69.34 to Sta. 388+93.49 (24'4")	35.2 Sq. Yds.
Widening By Alternate Methods (6'-3")	5.8 Sq. Yds. (Sta. 387+69.34 to 387+72.24)
Lt. Side 388+93.49 to Sta. 389+69.5	7.1 Sq. Yds.
Lt. Side 389+69.5 to Sta. 388+23.2 (1")	18.0 Sq. Yds.
Rt. Side 388+01 to Sta. 389+01 (1")	16.0 Sq. Yds.
Rt. Side 387+71.2 And to Sta. 389+15 And (1")	336.0 Sq. Yds.
S. E. End Sta. 384+64	
P.C.C. Base Course	77.1 Sq. Yds.

Alternate "A" P.C.C. Base Course Wid. (9")  
 Sta. 388+37.78 to Sta. 389+15.4h 77.1 Sq. Yds.

Alternate "B" Bit. Concrete Base Course Wid. (9")  
 Sta. 388+37.78 to Sta. 389+15.4h 77.1 Sq. Yds.

**CONSTRUCTION DETAILS**  
 Main Line Sta. 387+69.34 to 389+69.5  
 Side Rd. Conn. Rt. Sta. 384+64

S.I. (MRS) Schuyler County

