



HIGHWAY FACTORS ATTACHMENT

Construction plans for I-70 completed in 1962 in the vicinity of the crash

Highland, IL

HWY23MH015

(4 pages)

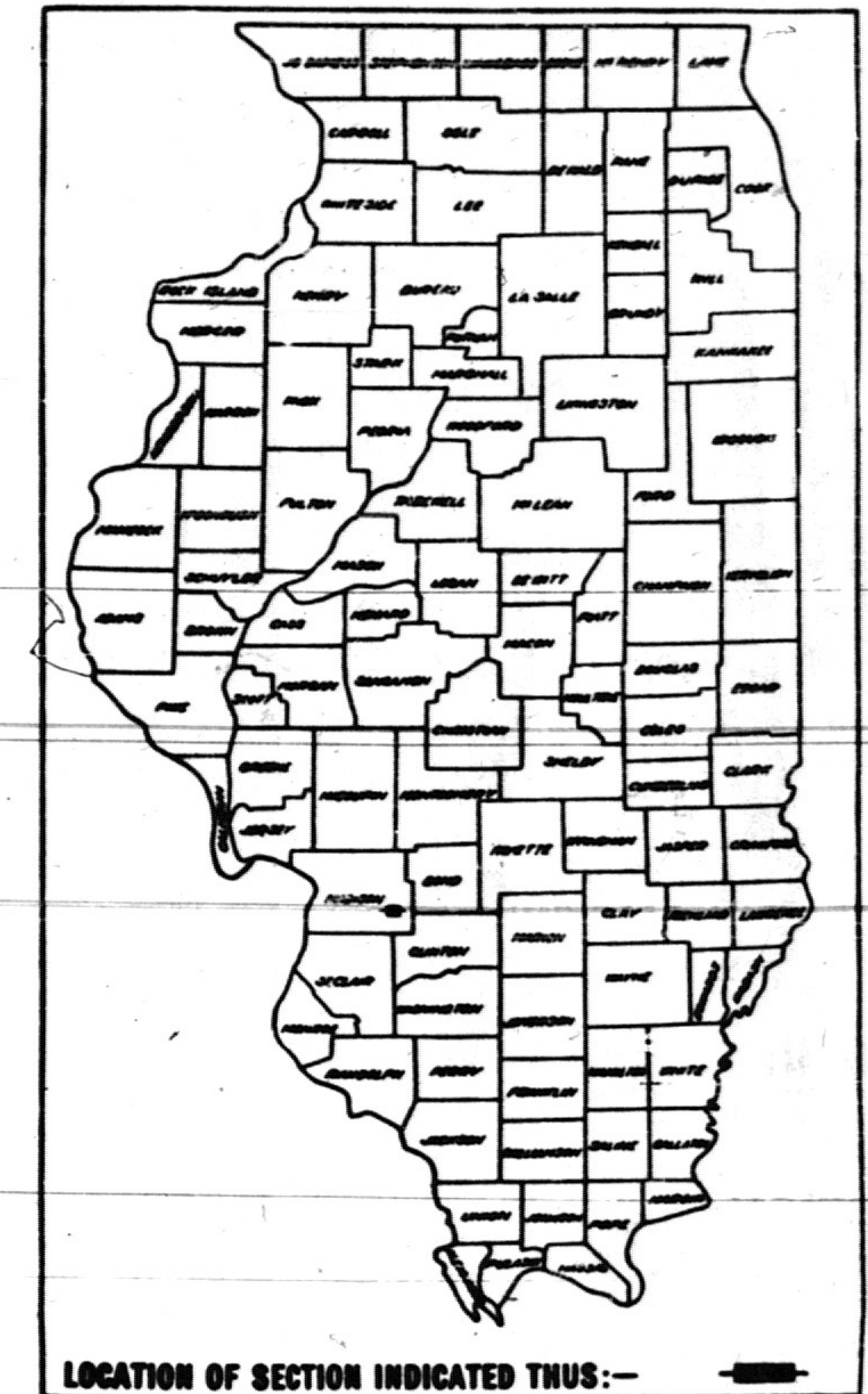
STATE OF ILLINOIS
DEPARTMENT OF PUBLIC WORKS AND BUILDINGS
DIVISION OF HIGHWAYS
PLANS FOR PROPOSED
FEDERAL AID HIGHWAY

FEDERAL AID ROUTE NO.	SEC.	COUNTY	TOTAL SHEETS	SHEET NO.
FAI-70	60-13	Madison	75	1

P-98-085-00

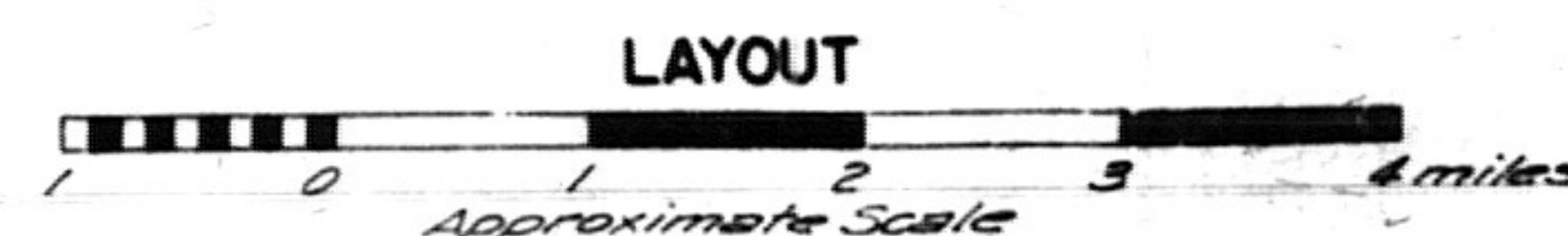
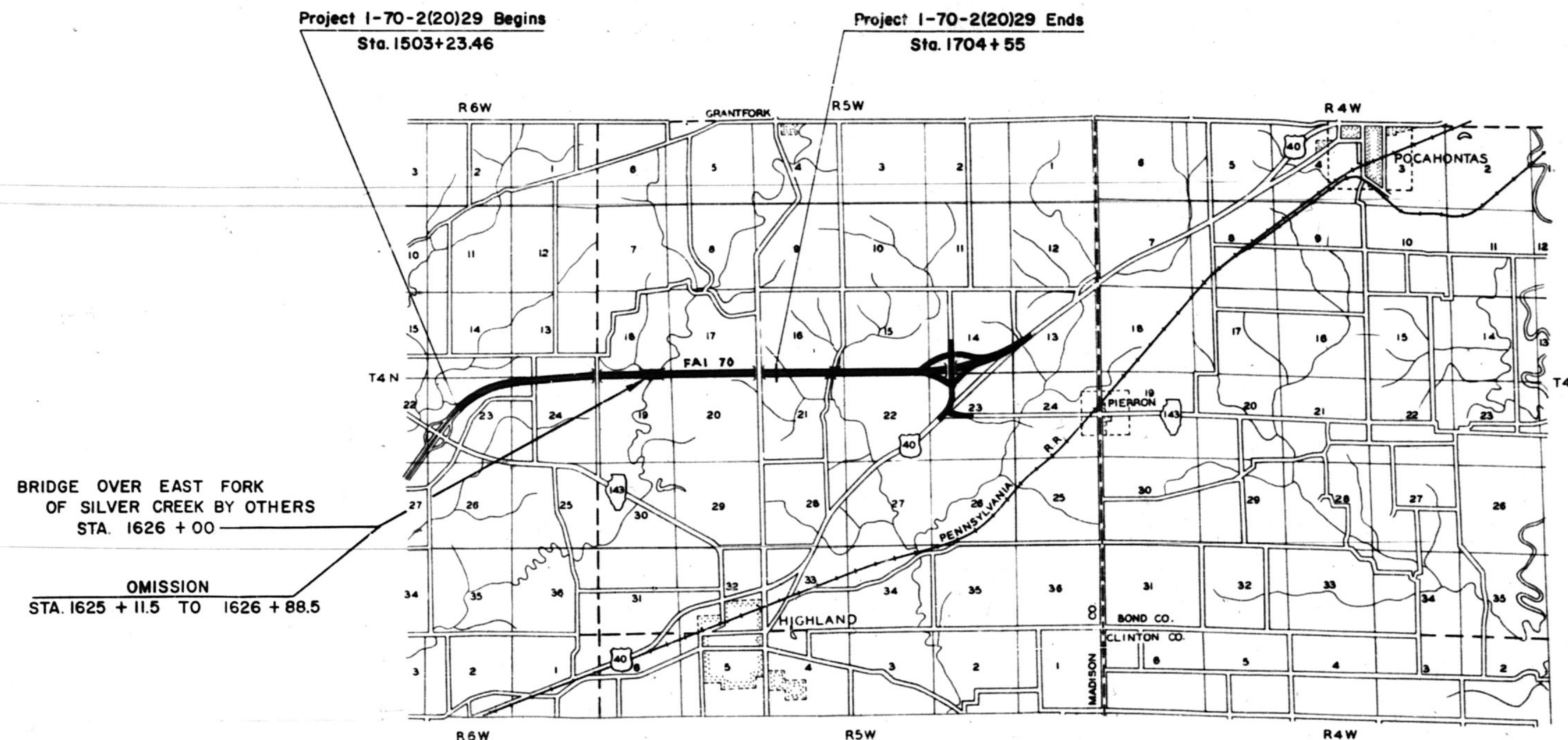
SCALES

PLAN	1 INCH	100 FT.
PROFILE HOR.	1 INCH	100 FT.
PROFILE VERT.	1 INCH	10 FT.
CROSS-SECTIONS	1 INCH	10 FT.



FA I ROUTE 70 SECTION 60-13
MADISON COUNTY
FEDERAL AID PROJECT I-70-2(20)29

C-98-044-64



PLANS PREPARED BY
JENKINS, MERCHANT & NANKIVIL
 CONSULTING ENGINEERS
 SPRINGFIELD, ILLINOIS

Carte Jenkins
 Consulting Engineer

Charles H. Merchant
 Structural Engineer

R. M. Nankivil
 Consulting Engineer

September 20, 1961
 Date

STATE OF ILLINOIS
 DEPARTMENT OF PUBLIC WORKS AND BUILDINGS
 DIVISION OF HIGHWAYS

SUBMITTED: May 3, 1961

DESIGNED: Dec 3, 1961

DRAWN: Dec 3, 1961

APPROVED: Dec 3, 1961

APPROVED: Dec 3, 1961

DEPARTMENT OF COMMERCE
 BUREAU OF PUBLIC ROADS

APPROVED: _____

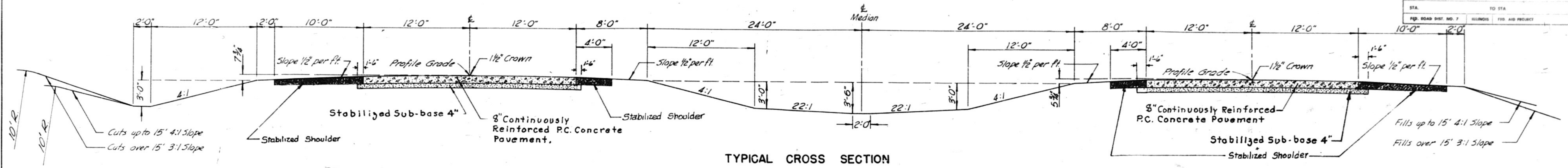
DIVISION ENGINEER

DATE: _____

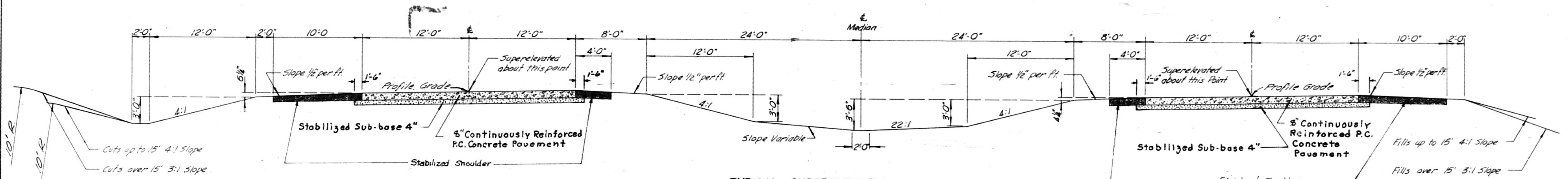
HIGHWAY CLASSIFICATION
 FAI Rte. 70 1832-T-70

CONTRACT NO. 23711

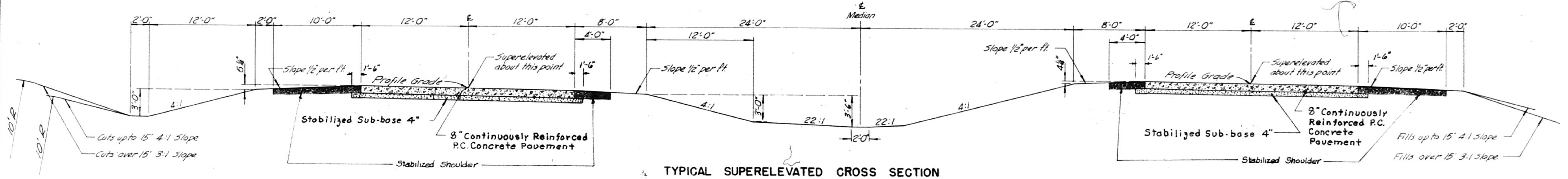
PROJECT I-70-2(20)29 NET LENGTH 19,954.54 FEET = 3.779 MILES



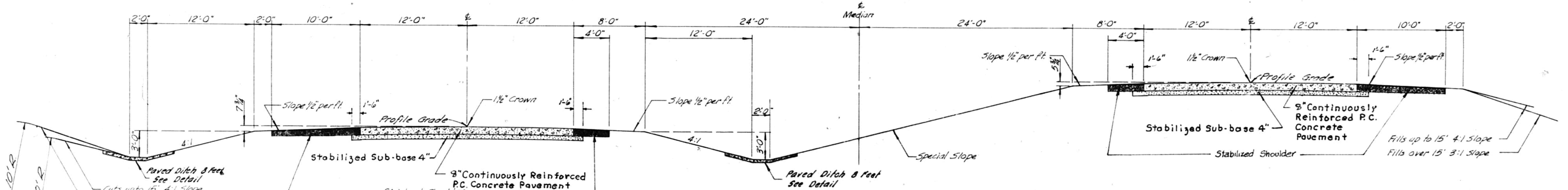
TYPICAL CROSS SECTION



TYPICAL SUPERELEVATED CROSS SECTION



TYPICAL SUPERELEVATED CROSS SECTION WITH DUAL GRADES



TYPICAL CROSS SECTION WITH DUAL GRADES

THE NOMINAL THICKNESSES FOR SUB-BASE GRANULAR MATERIAL AND GRAVEL OR CRUSHED STONE BASE AND SURFACE COURSES ARE SHOWN ON THE TYPICAL SECTIONS, STANDARDS, SCHEDULES OR SPECIAL DETAILS. THE CONSTRUCTED THICKNESSES OF THE ABOVE ITEMS SHALL NOT BE LESS THAN 90 PER CENT OF THE NOMINAL THICKNESS AT ANY LOCATION.

Note:
 1. For Detail of Shoulders see Special Detail Sheet # 74.
 2. THE CROSS SECTIONS AND THE BALANCE QUANTITIES HAVE NOT BEEN ADJUSTED TO AGREE WITH REVISIONS SHOWN ON TYPICAL SECTIONS; HOWEVER, THE SUMMARY OF QUANTITIES HAVE BEEN CORRECTED ACCORDINGLY.

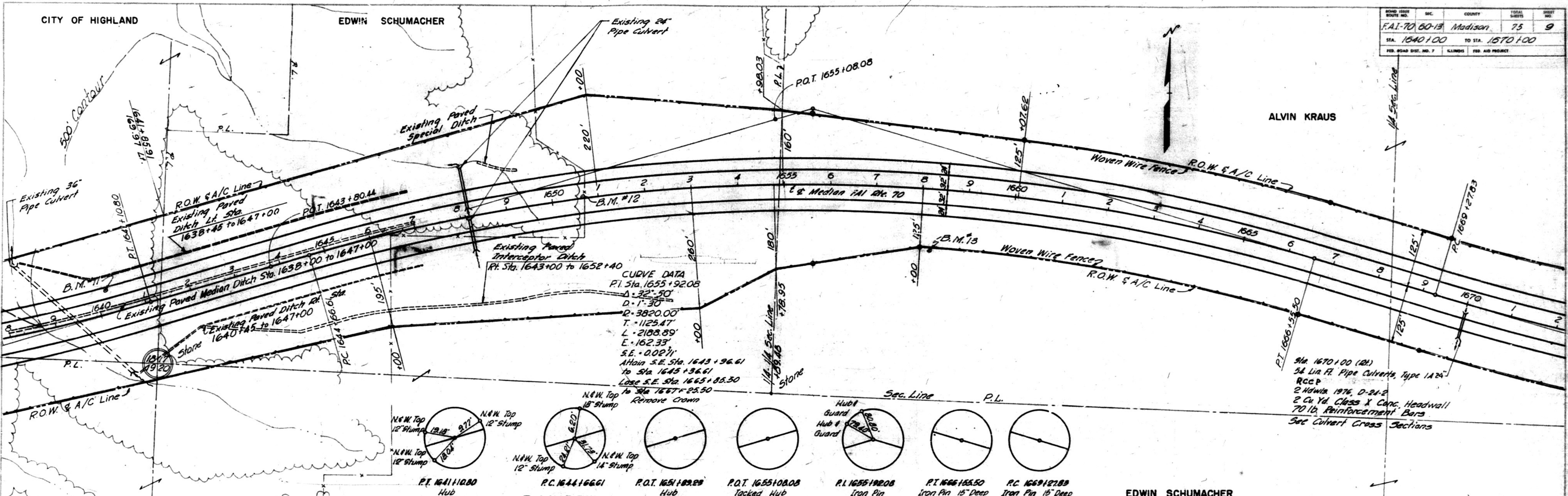
TYPICAL CROSS SECTIONS

FAI. ROUTE-70 SECTION 60-13
 MADISON COUNTY

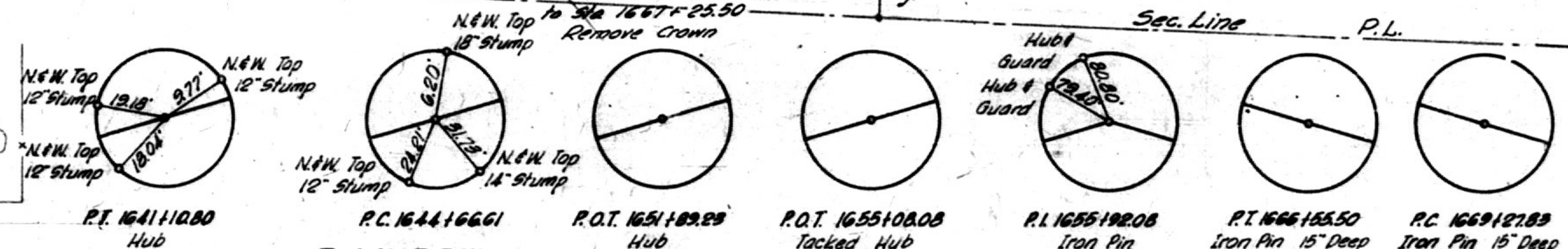
CITY OF HIGHLAND

EDWIN SCHUMACHER

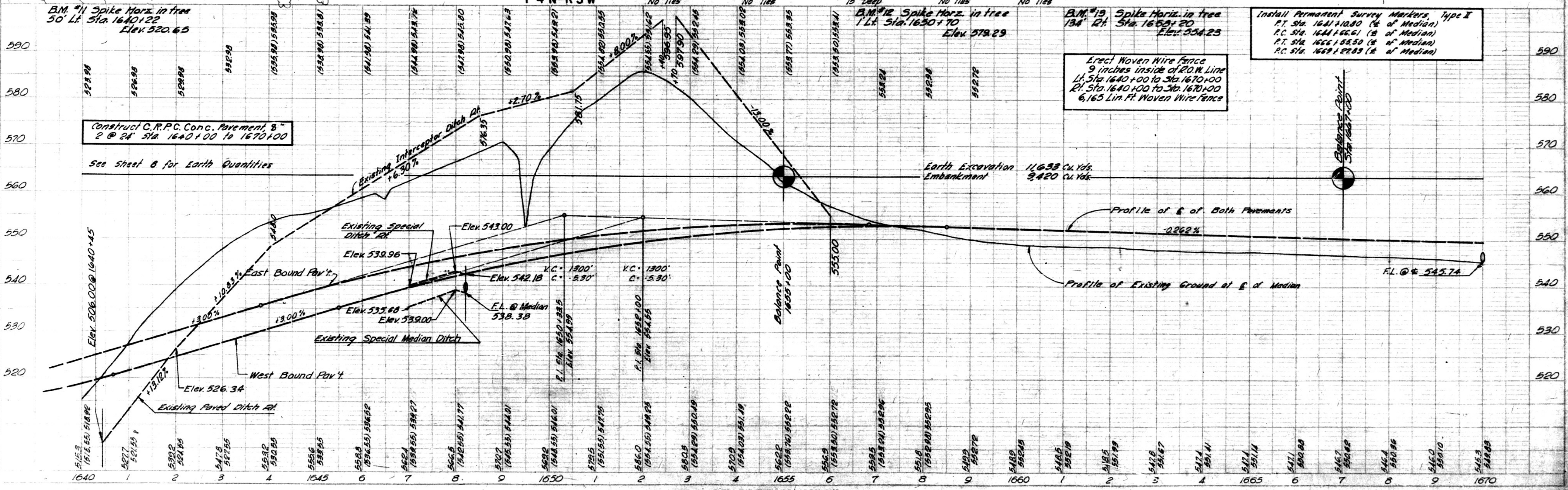
ROAD DIST. NO.	SEC.	COUNTY	TOTAL SHEETS	SHEET NO.
FAI-70	60-13	Madison	75	9
STA. 1640+00		TO STA. 1670+00		
PER. ROAD DIST. NO. 7		CLINCH		PER. AID PROJECT



CURVE DATA
 P.I. Sta. 1655+92.08
 $\Delta = 32^\circ 50'$
 $D = 173.30'$
 $R = 3820.00'$
 $T = 1125.47'$
 $L = 2188.89'$
 $E = 162.33'$
 $SE = 0.02\%$
 A HORIZ. S.E. Sta. 1643+96.61
 TO Sta. 1645+36.61
 LOSS S.E. Sta. 1665+85.50
 TO Sta. 1667+25.50
 REMOVE CROWN



EDWIN SCHUMACHER



Revised Contour PC Curve Ref. 5+08'

MAIN LINE
Rte. 70