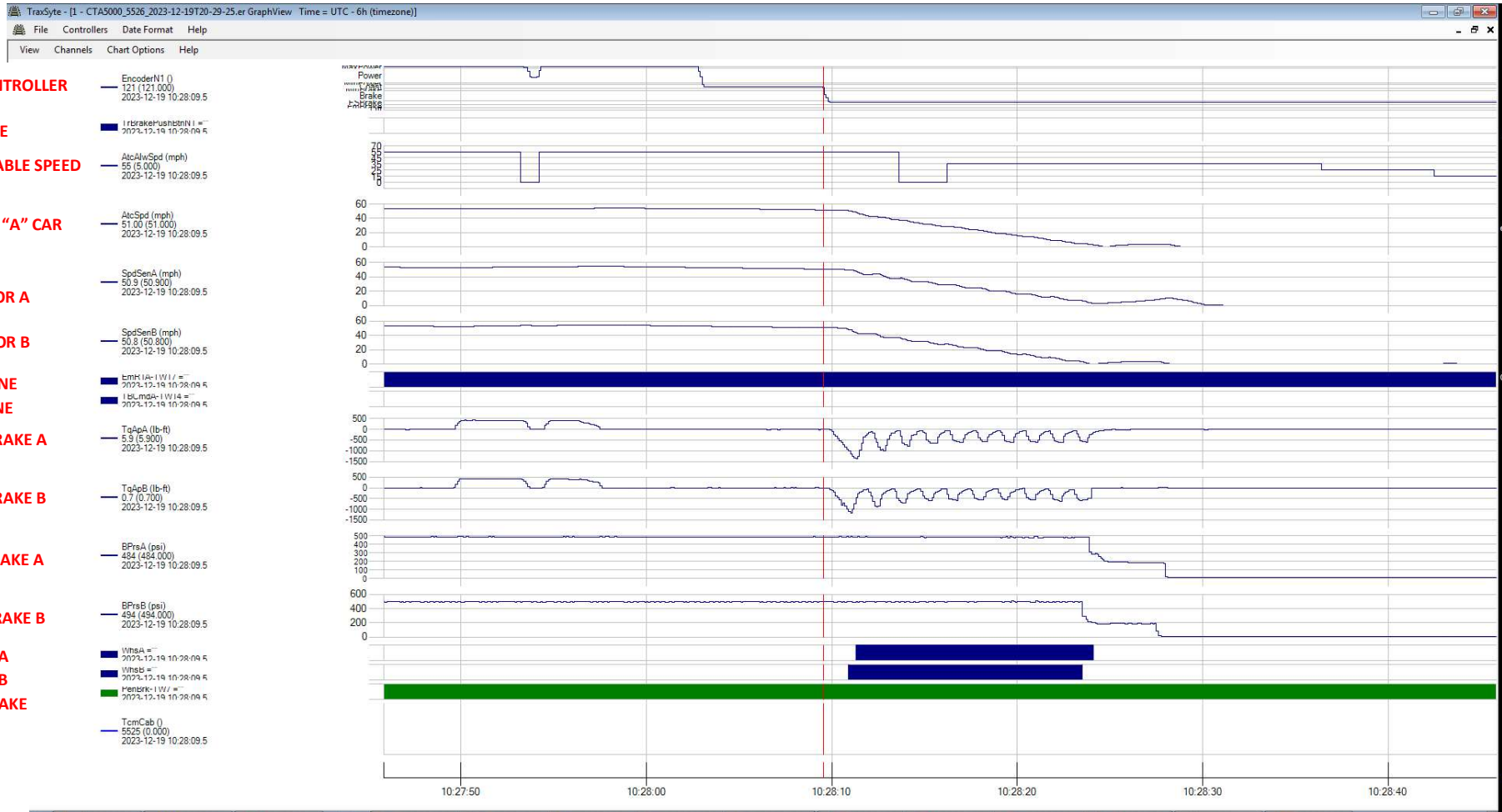


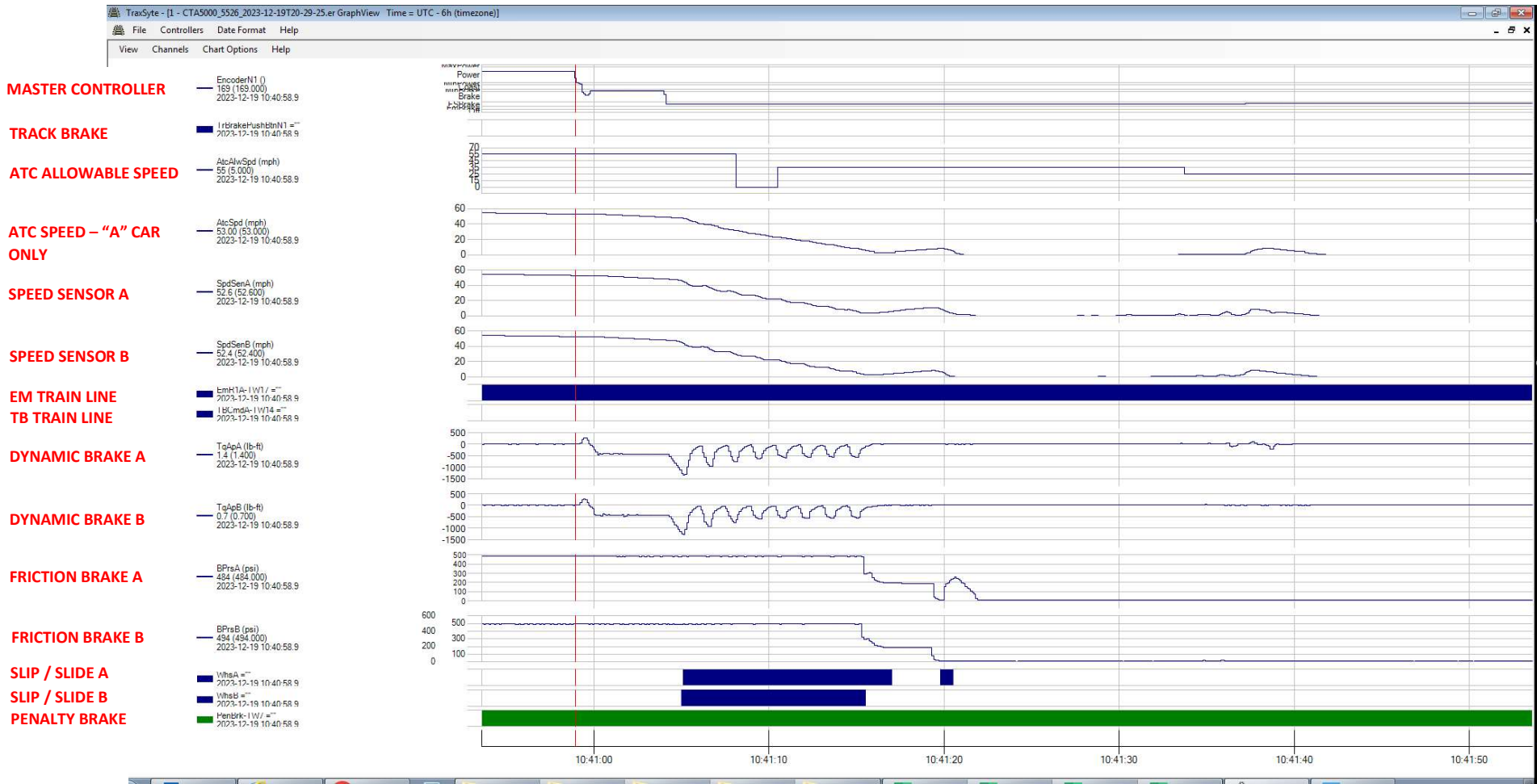


### Test Run #1 ERU Event Log – Operator acts normally; full service brake at 26T bond



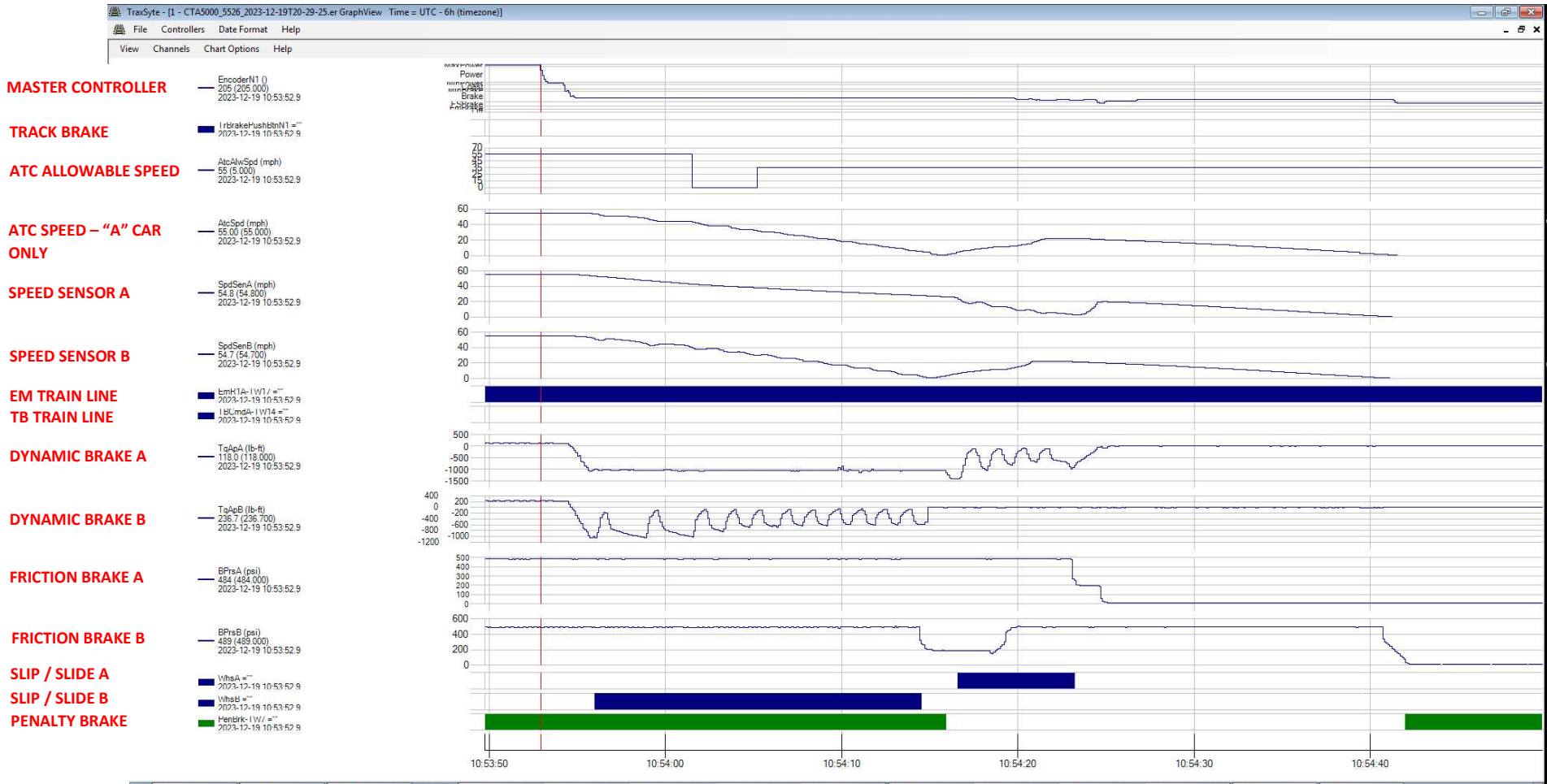


### Test Run #2 ERU Event Log – Operator acts normally; full service brake at 26T bond



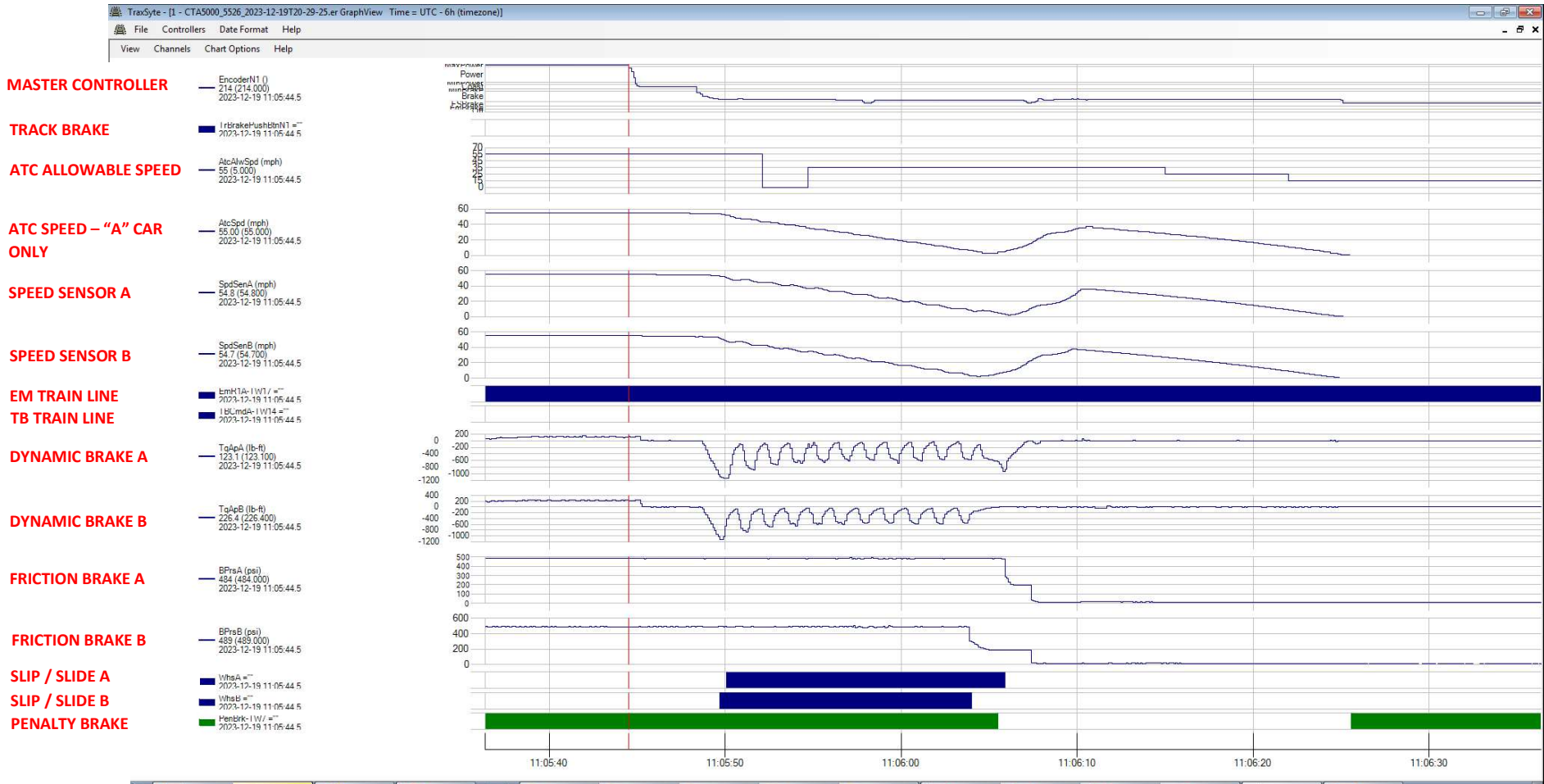


### Test Run #3 ERU Event Log – ATC bypass; ~75% service brake at 26T bond



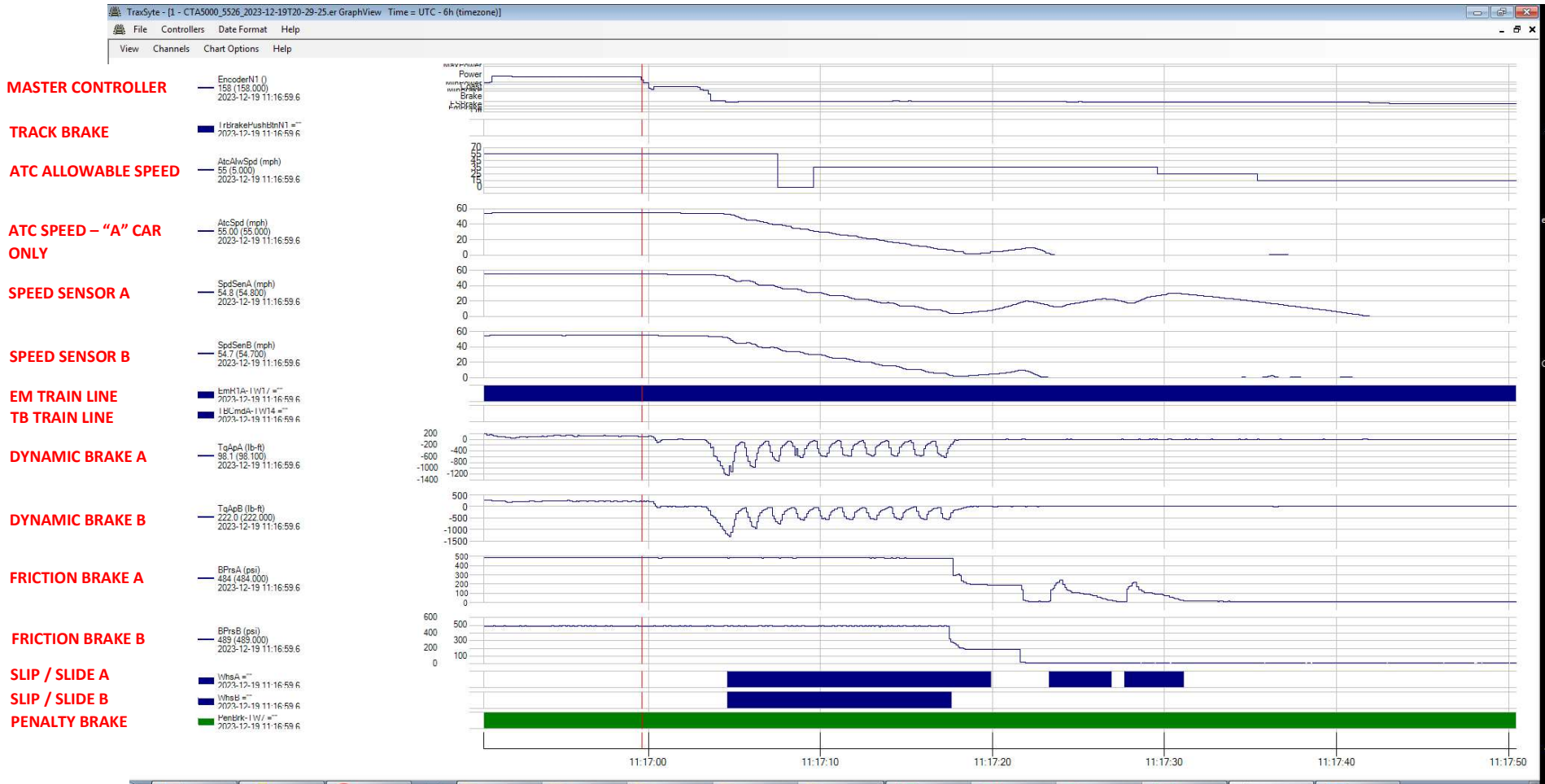


### Test Run #4 ERU Event Log – ATC bypass; ~75% service brake at 26T bond



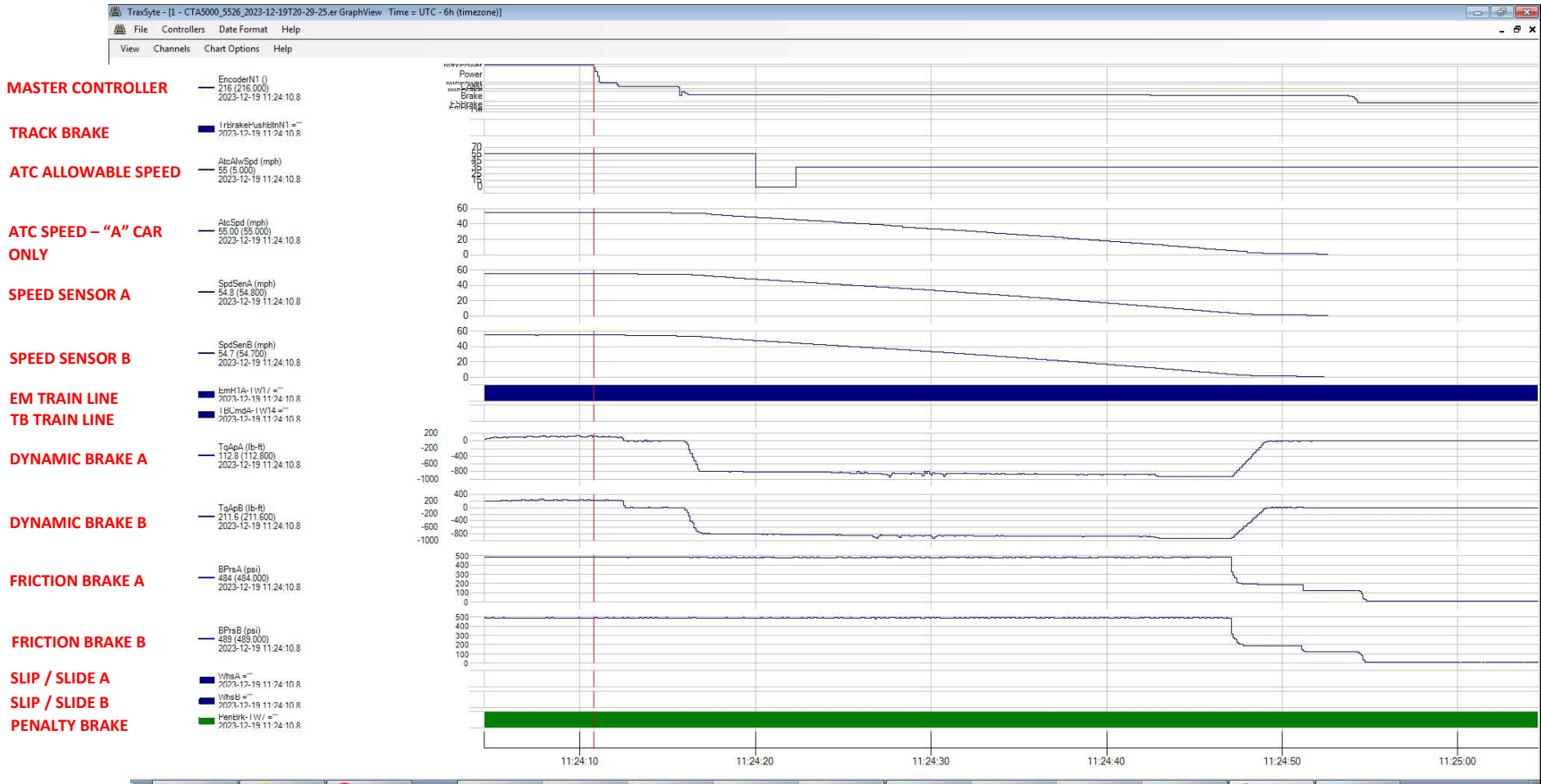


### Test Run #5 ERU Event Log – ATC bypass; ~75% service brake at 26T bond



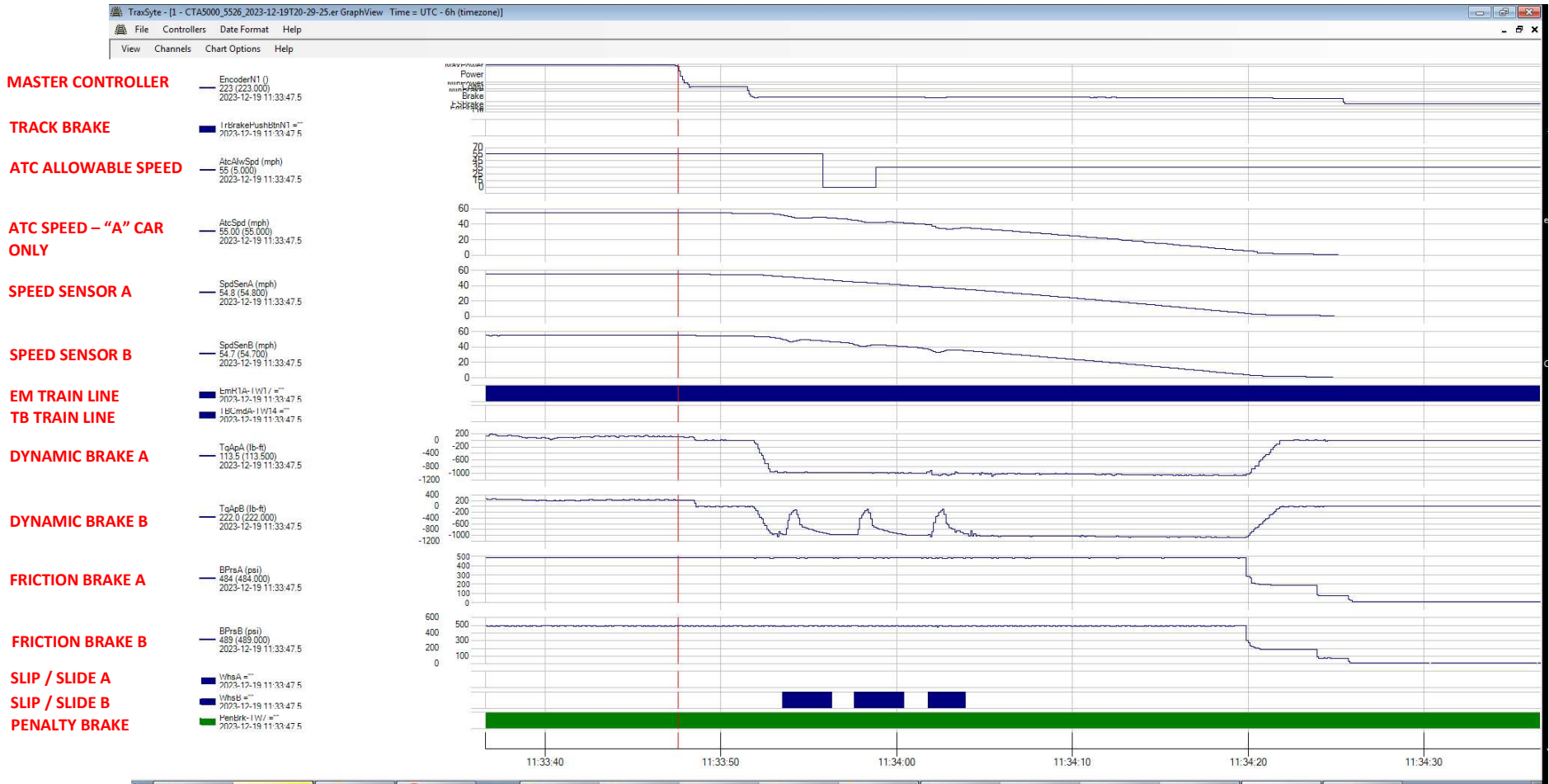


### Test Run #6 ERU Event Log – ATC bypass; ~50% service brake at 26T bond – brake rate (-1.7 mph/s)





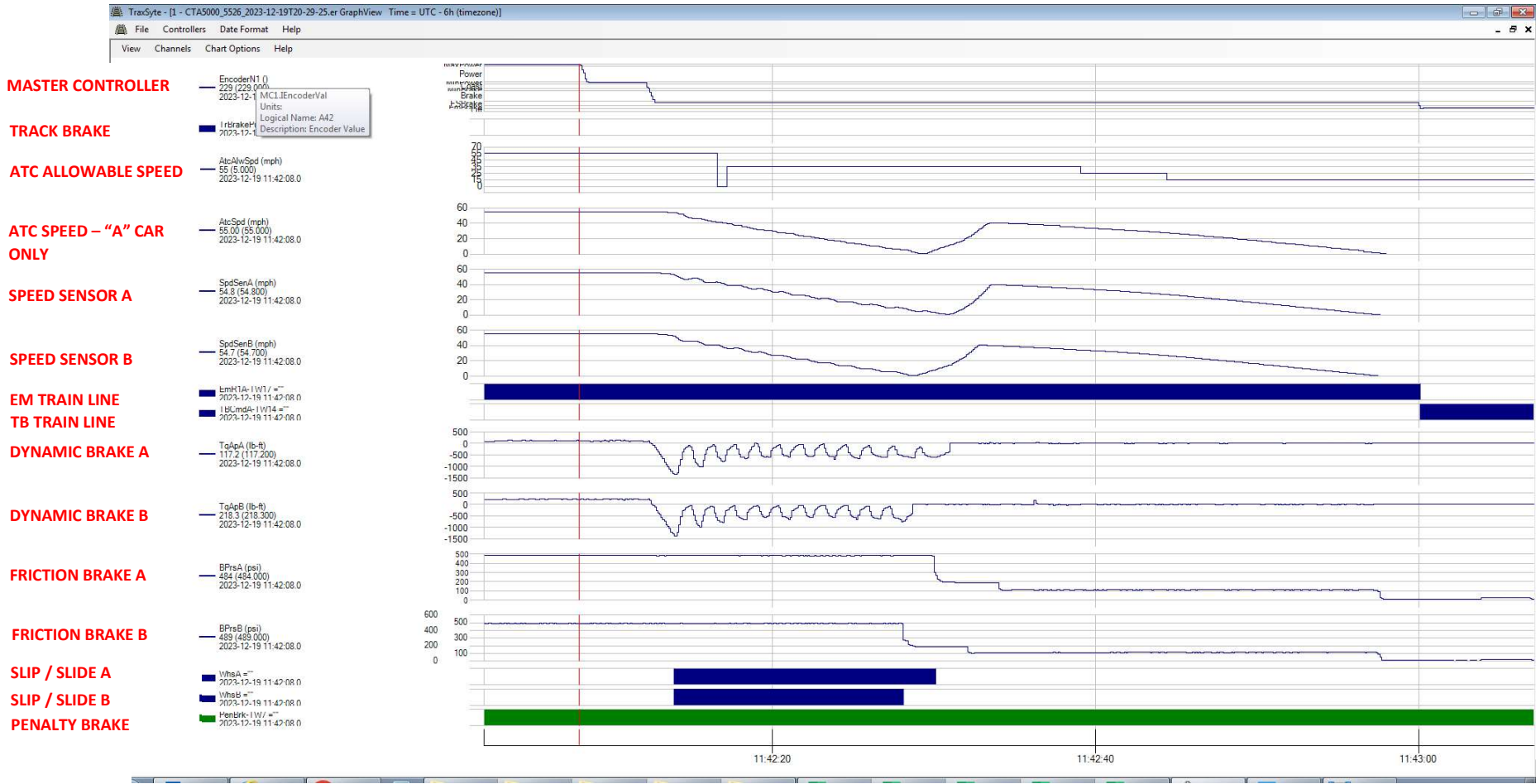
**Test Run #7 ERU Event Log – ATC bypass; ~50% service brake at 26T bond – brake rate (-2.0 mph/s)**







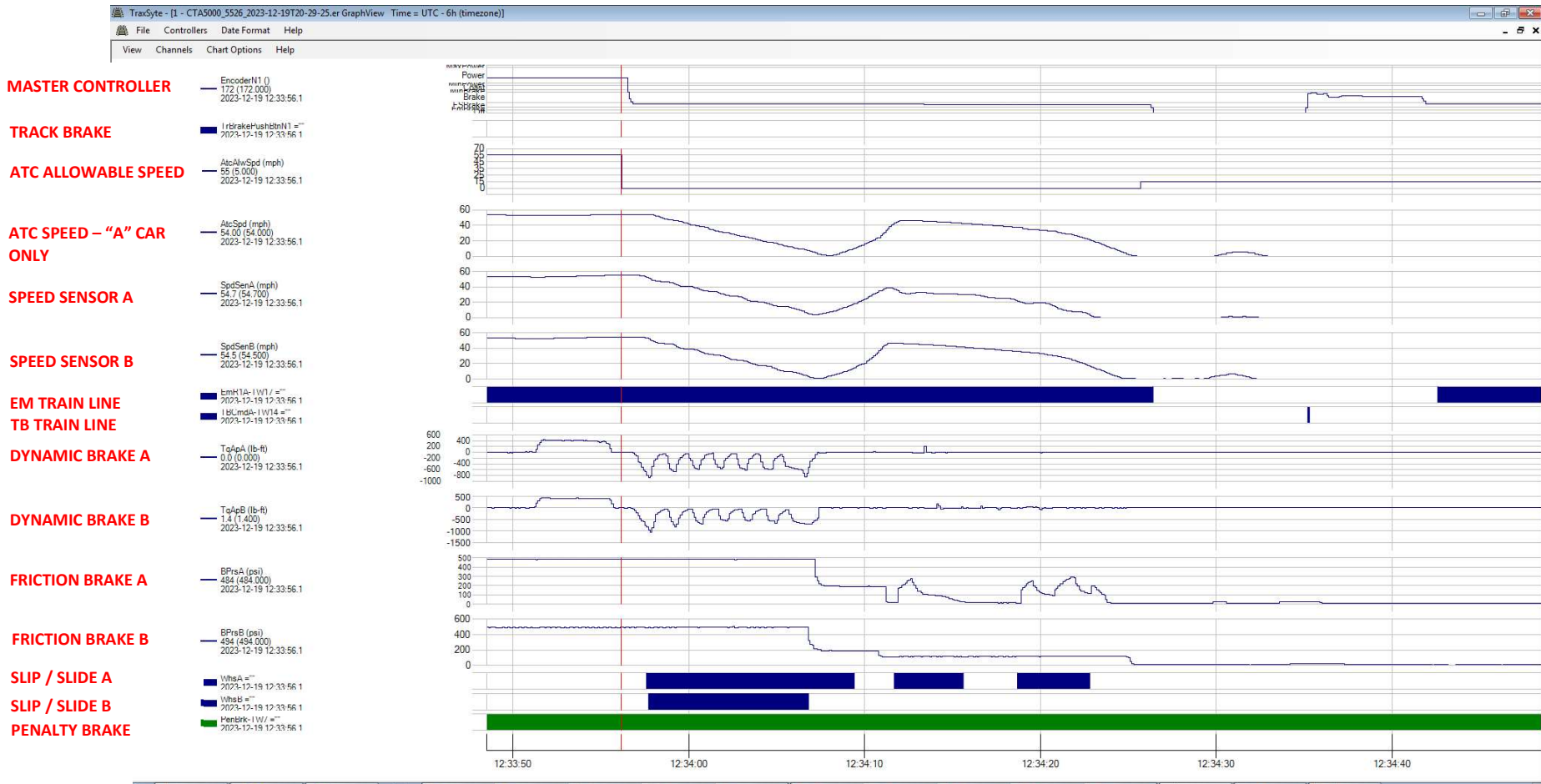
### Test Run #8 ERU Event Log – Operator acts normally; full service brake at 26T bond





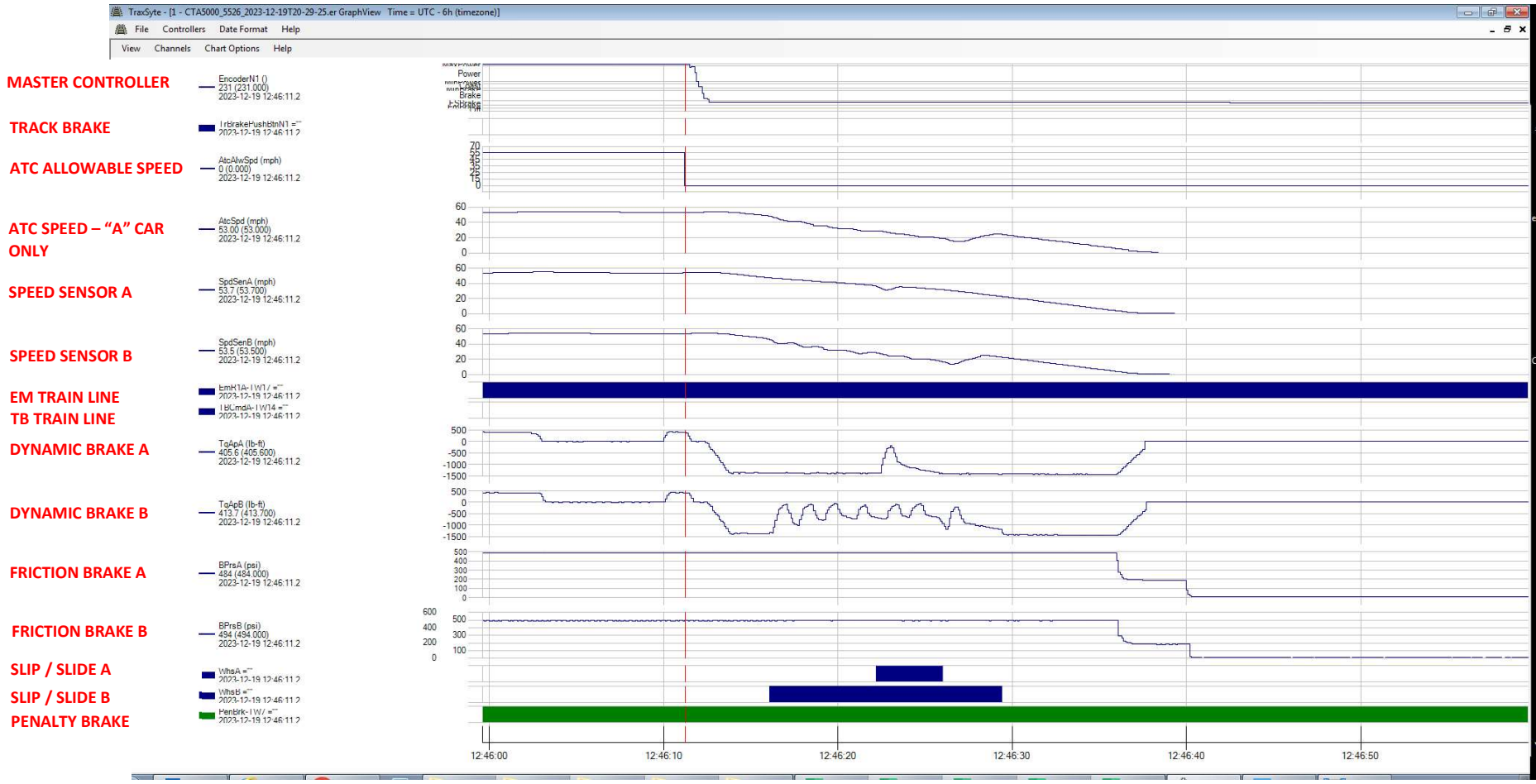


### Test Run #9 ERU Event Log – Incident recreation: operator reacts to ATC; full service brake; "Emergency brake" upon sight of snow-fighter



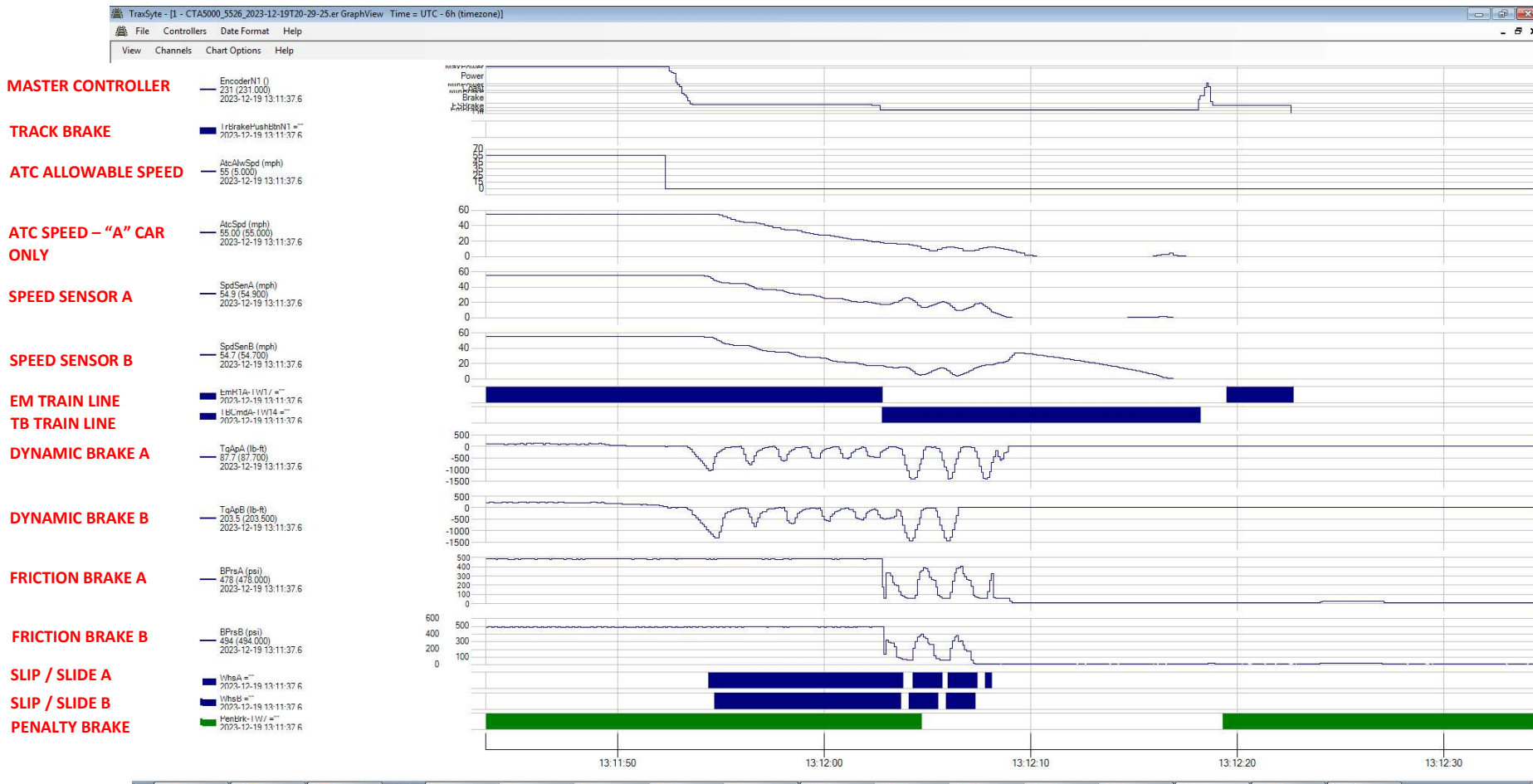


### Test Run #10 ERU Event Log – Incident recreation: operator reacts to ATC; full service brake; "Emergency brake" upon sight of snow-fighter



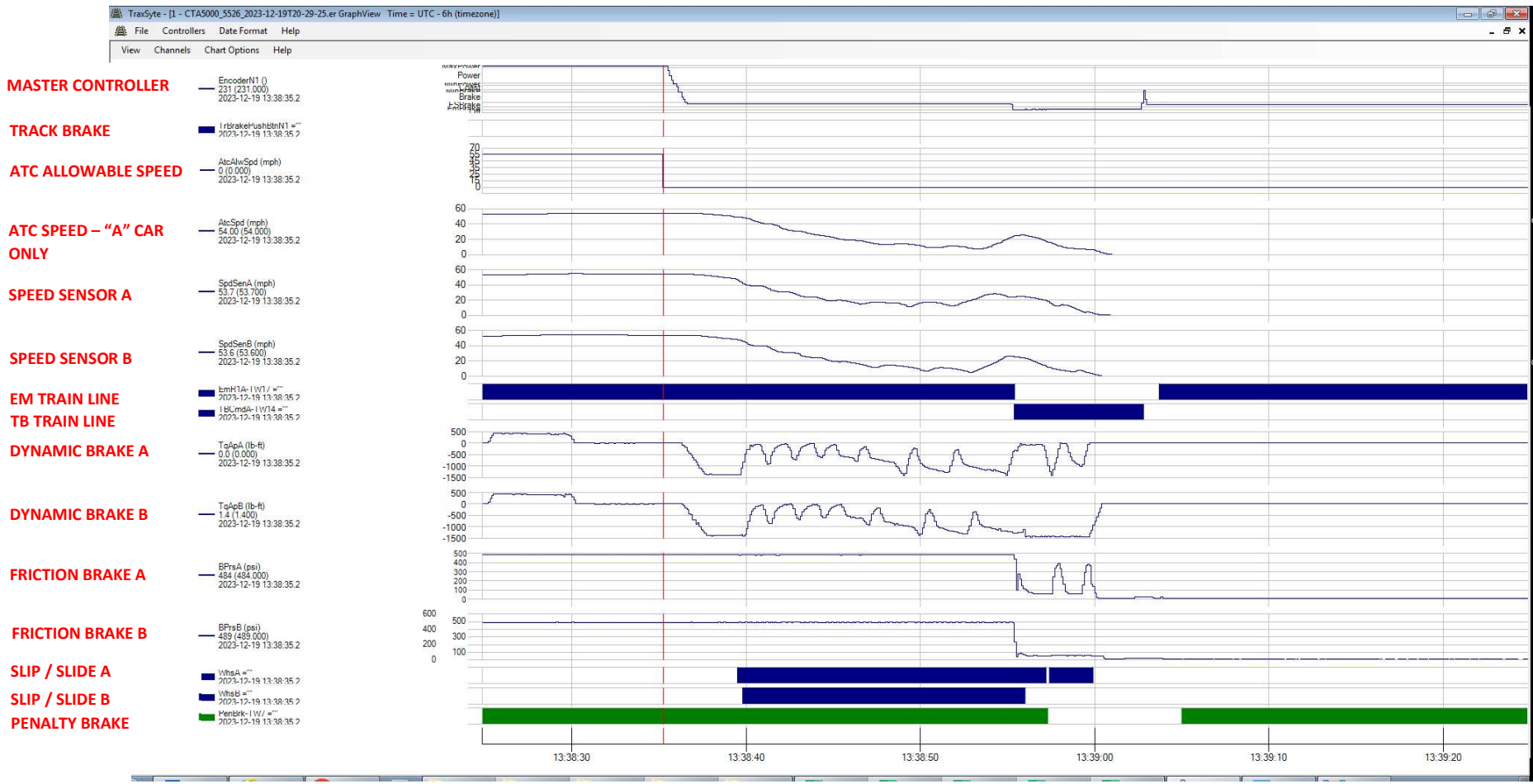


### Test Run #11 ERU Event Log – Incident recreation: operator reacts to ATC; full service brake; "Emergency brake" upon sight of snow-fighter





### Test Run #12 ERU Event Log – Incident recreation: operator reacts to ATC; full service brake; "Emergency brake" upon sight of snow-fighter





### Test Run #13 ERU Event Log – Full emergency at 26T bond

MASTER CONTROLLER

EncoderN1 0  
231 (231.000)  
2023-12-19 13:50:23.0

TRACK BRAKE

TrbrakePushbtnN1 ="  
2023-12-19 13:50:23.0

ATC ALLOWABLE SPEED

AbsAtcSpd (mph)  
0 (0.000)  
2023-12-19 13:50:23.0

ATC SPEED – "A" CAR ONLY

AtcSpd (mph)  
55.00 (55.000)  
2023-12-19 13:50:23.0

SPEED SENSOR A

SpdSenA (mph)  
54.3 (54.300)  
2023-12-19 13:50:23.0

SPEED SENSOR B

SpdSenB (mph)  
54.2 (54.200)  
2023-12-19 13:50:23.0

EM TRAIN LINE

EmH1A-IWV / ="  
2023-12-19 13:50:23.0

TB TRAIN LINE

TbH1A-IWV / ="  
2023-12-19 13:50:23.0

DYNAMIC BRAKE A

TdApA (lb-ft)  
-2.9 (-2.900)  
2023-12-19 13:50:23.0

DYNAMIC BRAKE B

TdApB (lb-ft)  
-2.9 (-2.900)  
2023-12-19 13:50:23.0

FRICTION BRAKE A

BPreA (psi)  
484 (484.000)  
2023-12-19 13:50:23.0

FRICTION BRAKE B

BPreB (psi)  
484 (484.000)  
2023-12-19 13:50:23.0

SLIP / SLIDE A

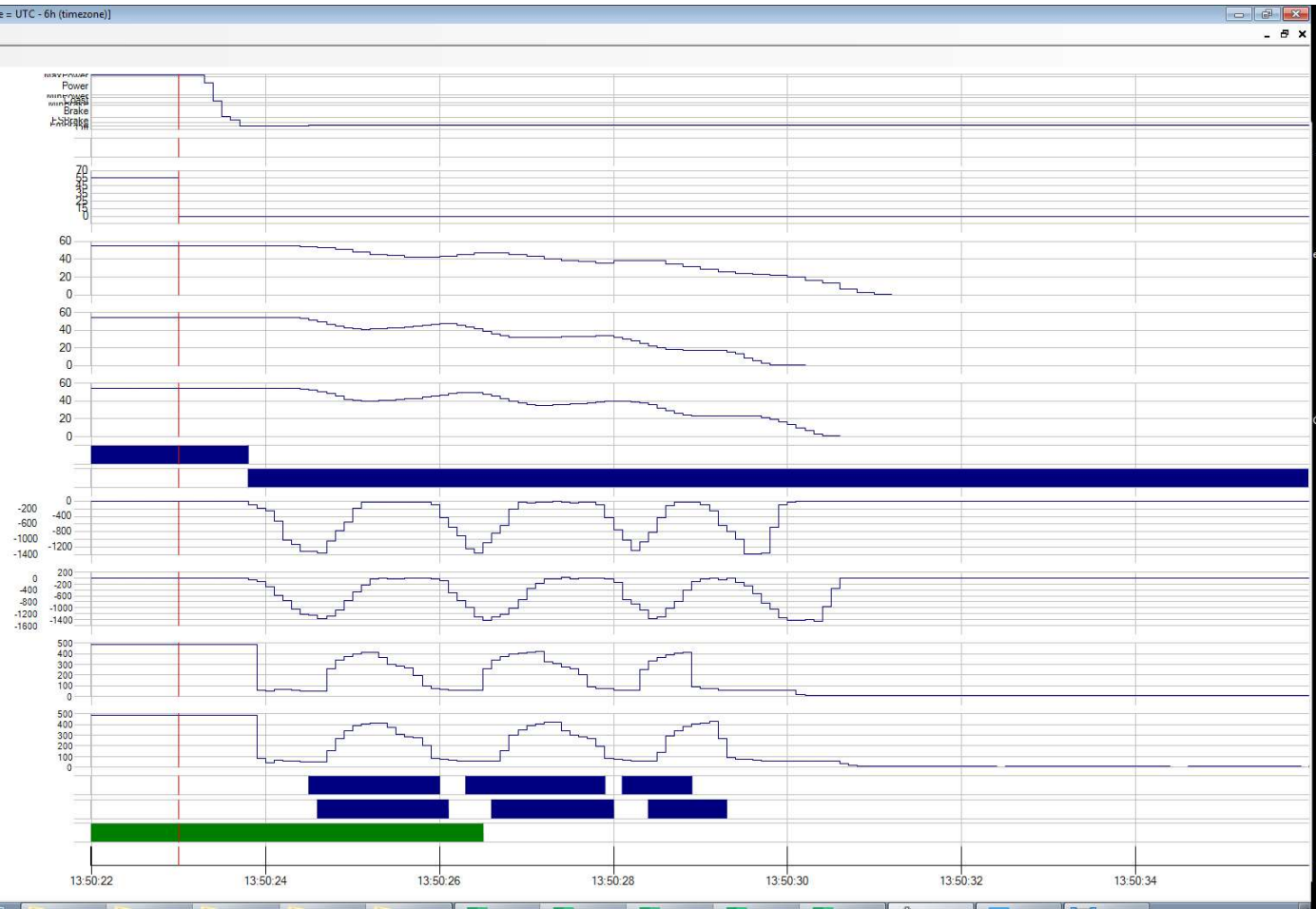
WslpA ="  
2023-12-19 13:50:23.0

SLIP / SLIDE B

WslpB ="  
2023-12-19 13:50:23.0

PENALTY BRAKE

PenBrk-IWV / ="  
2023-12-19 13:50:23.0





### Test Run #14 ERU Event Log – Full emergency at 26T bond; track brake featured turned ON

