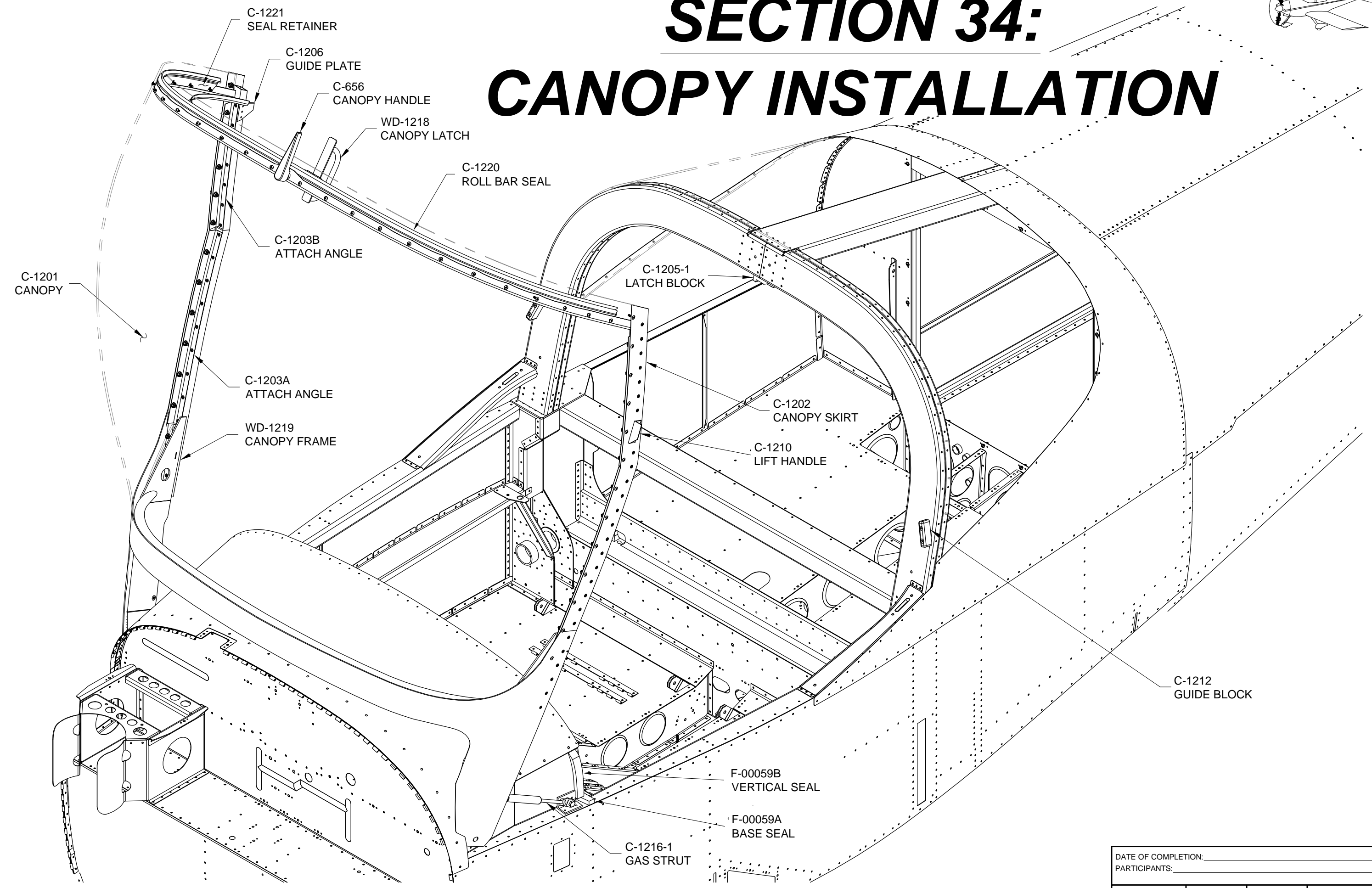
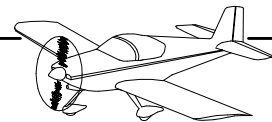


# SECTION 34: CANOPY INSTALLATION



DATE OF COMPLETION: \_\_\_\_\_  
 PARTICIPANTS: \_\_\_\_\_



Step 1: You will need to have a non-claustrophobic friend/spouse/child help you with this step. After having your helper climb into the cockpit, rotate the WD-1219 Canopy Frame back down to the closed position. Hand one of the wood spacers to your helper.

Place the C-1201 Canopy back into place on the canopy frame and re-cleco.

Step 2: Re-cleco both C-1202 Canopy Skirts to the canopy frame. Be sure that the canopy is clecoed along the full width of the front and rear bows. Use duct tape if/as required to pull the canopy sides down between the front and rear bows.

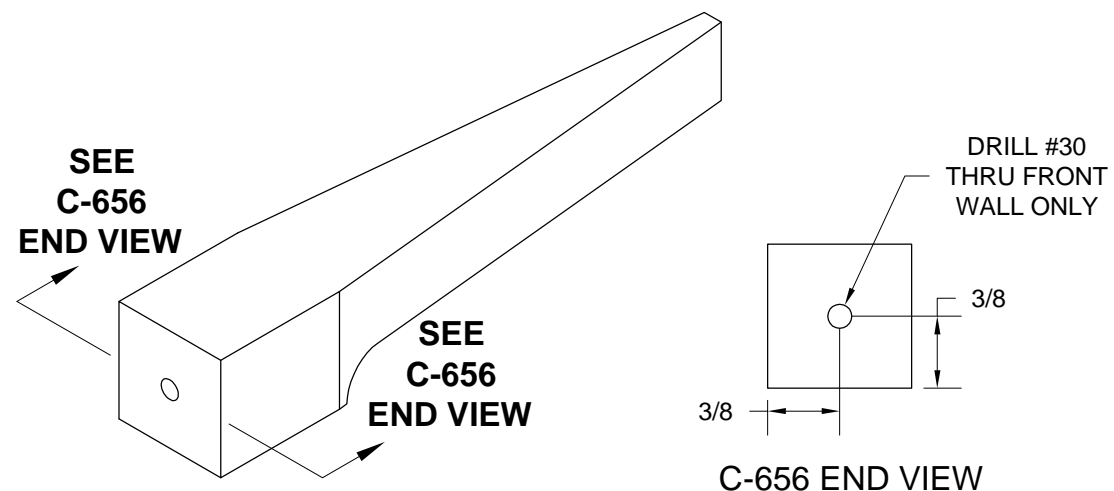
Match-drill using a #30 Plexiglass bit through the upper row of holes in the canopy skirt through the C-1201 Canopy and C-1203A and C-1203B Attach Angles. (The Plexiglass bit will easily cut through the thin aluminum attach angles.) Have your helper hold the wood spacer against the canopy attach angles to resist the drill pressure. Cleco each hole after drilling.

Repeat for the opposite side of the canopy.

Step 3: Remove the C-1201 Canopy from the fuselage and set it on your work table. Your helper can now be set free!

Final-Drill all holes in the canopy using a #27 Plexiglass bit. Deburr the drilled holes in the canopy.

Machine countersink the holes along the front edge of the canopy to fit the head of an AACQ4-4 blind rivet. Countersinks that are up to .015 too shallow are acceptable and are preferable to countersinks that are even slightly too deep.



**FIGURE 1:**  
PILOT-DRILL CANOPY HANDLE

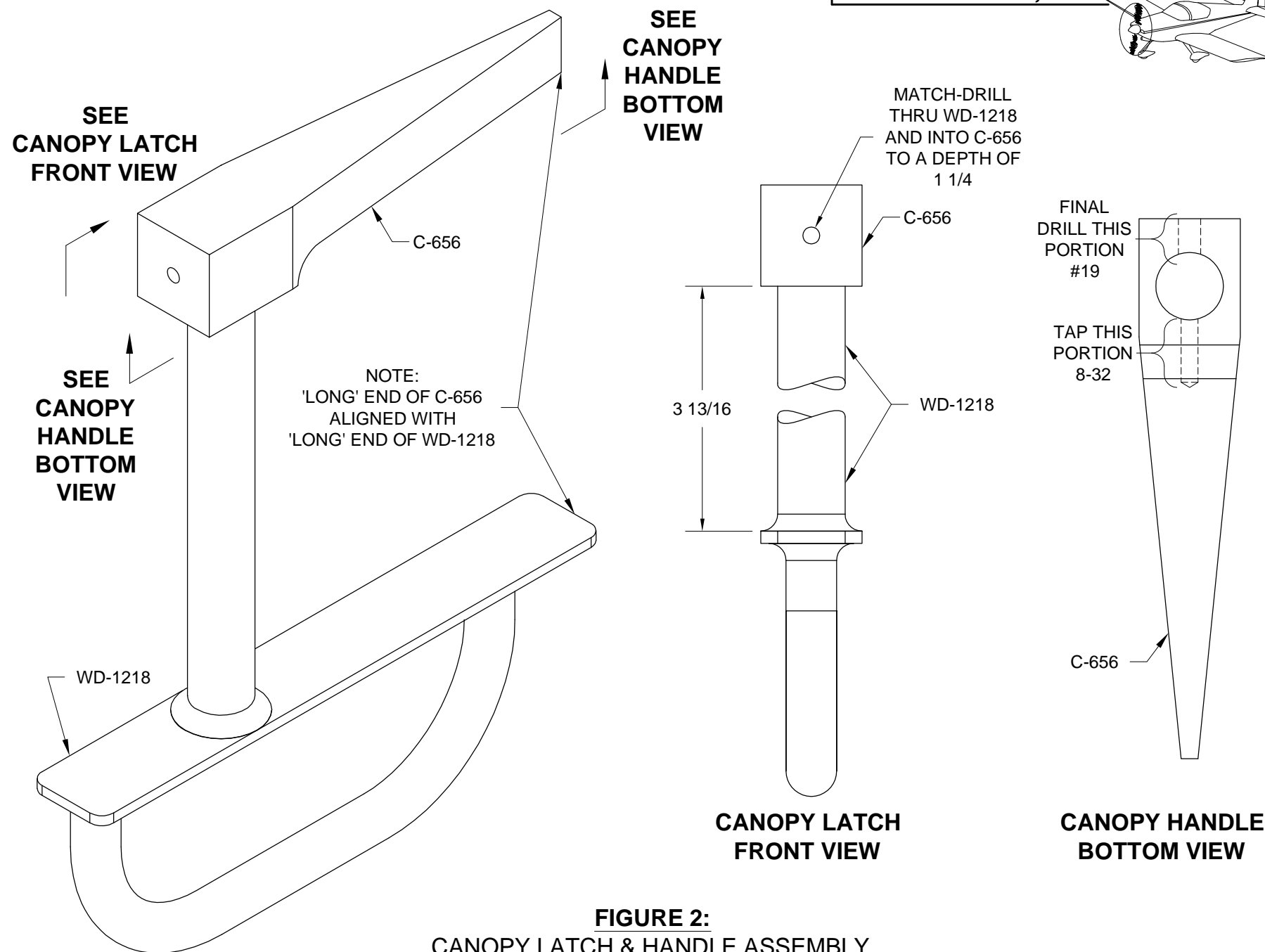
Step 4: Drill a pilot hole in the end of the C-656 Canopy Handle as shown in Figure 1.

Take the WD-1218 Canopy Latch and C-656 Canopy Handle and assemble them as shown in Figure 2. The tube end of the canopy latch may be shortened if/as required to achieve the dimension called-out in Figure 2.

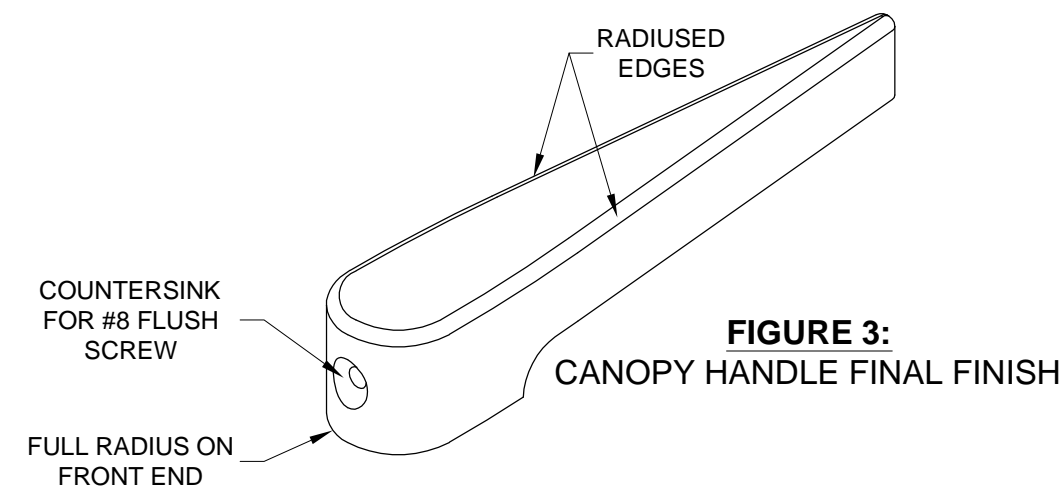
Using the pilot hole in the canopy handle as a drill guide, match-drill #30 through both sides of the canopy latch tube and into the canopy handle to the depth called-out in Figure 2.

Disassemble the canopy latch and canopy handle. Final-Drill #19 through the front part of the canopy handle. Final-Drill #19 through the canopy latch. Deburr holes. Cut threads in the rear "tail" portion of the canopy handle using an 8-32 tap. Machine countersink the canopy handle to fit the head of a #8 flush screw.

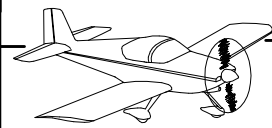
The canopy handle edges and ends may be rounded if/as desired. See Figure 3 for an example of what the final shape might be.



**FIGURE 2:**  
CANOPY LATCH & HANDLE ASSEMBLY



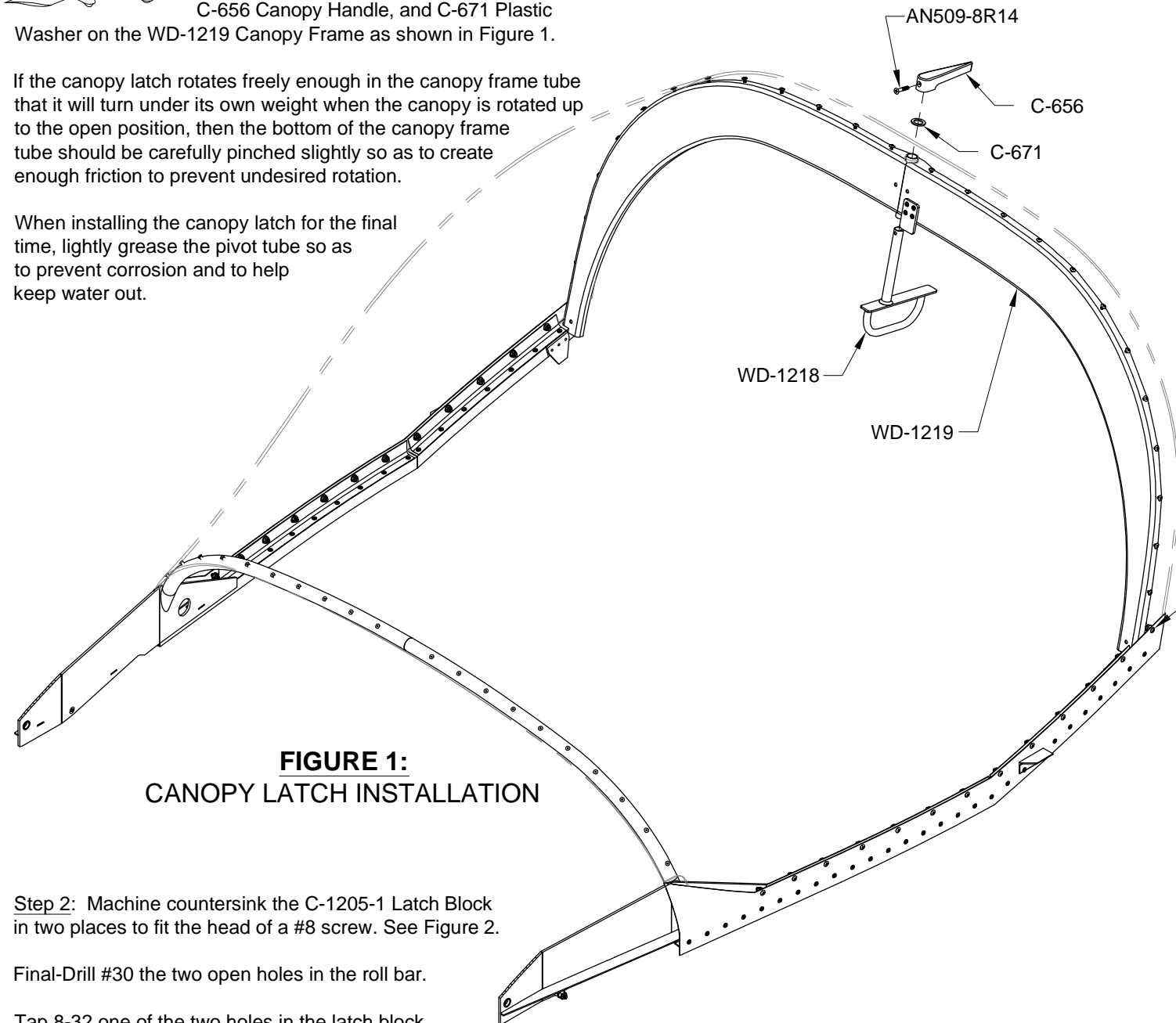
**FIGURE 3:**  
CANOPY HANDLE FINAL FINISH



**Step 1:** Install the WD-1218 Canopy Latch, C-656 Canopy Handle, and C-671 Plastic Washer on the WD-1219 Canopy Frame as shown in Figure 1.

If the canopy latch rotates freely enough in the canopy frame tube that it will turn under its own weight when the canopy is rotated up to the open position, then the bottom of the canopy frame tube should be carefully pinched slightly so as to create enough friction to prevent undesired rotation.

When installing the canopy latch for the final time, lightly grease the pivot tube so as to prevent corrosion and to help keep water out.



**FIGURE 1:  
CANOPY LATCH INSTALLATION**

**Step 2:** Machine countersink the C-1205-1 Latch Block in two places to fit the head of a #8 screw. See Figure 2.

Final-Drill #30 the two open holes in the roll bar.

Tap 8-32 one of the two holes in the latch block.

Cleco the latch block to the bottom of the roll bar through the un-tapped hole.

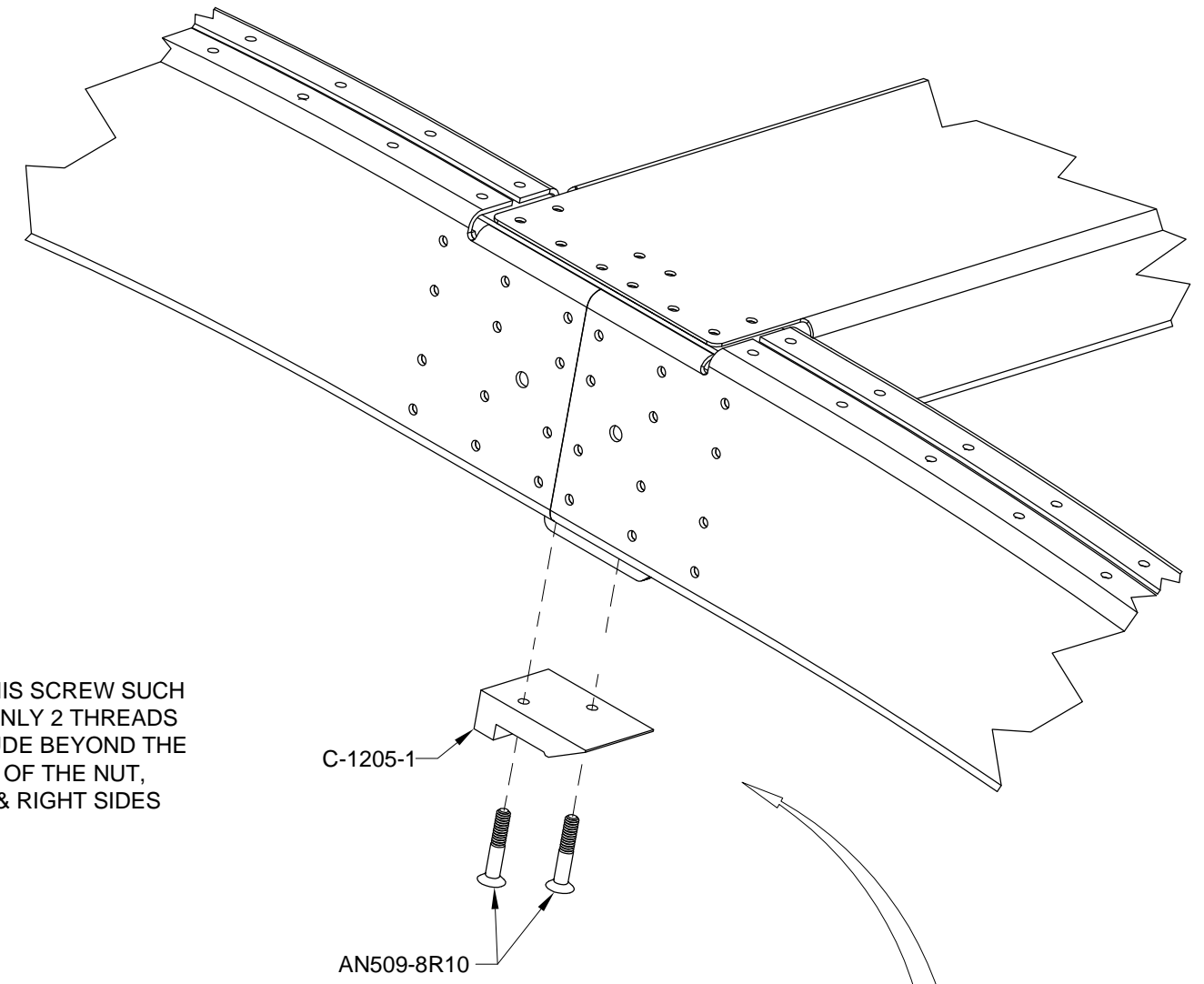
Start the 8-32 tap in the already tapped hole in the latch block and start the tap into the roll bar. The hole in the latch block will keep the tap properly aligned as it cuts threads into the roll bar. Remove the tap and uncleco the latch block.

Final-Drill #19 both holes in the latch block

Screw the latch block to the roll bar using the tapped hole in the roll bar.

With the latch block in place, tap the remaining hole in the bottom of the roll bar.

Remove the latch block, clean away the metal chips, and re-install using both screws.



TRIM THIS SCREW SUCH THAT ONLY 2 THREADS PROTRUDE BEYOND THE END OF THE NUT, LEFT & RIGHT SIDES

**FIGURE 2:  
LATCH BLOCK INSTALLATION**

