

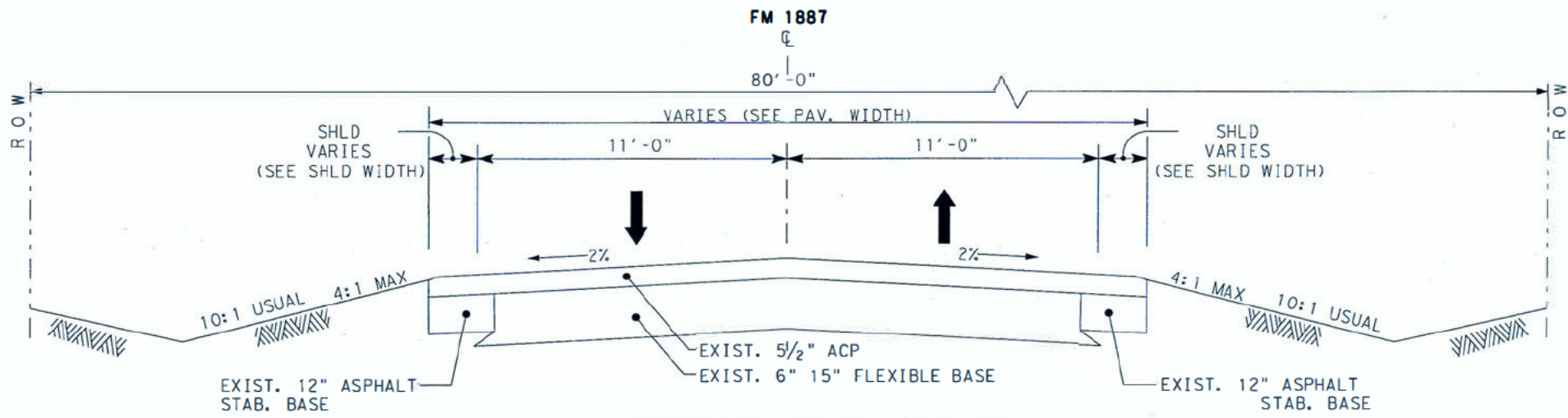


TECHNICAL RECONSTRUCTION GROUP  
FACTUAL REPORT ATTACHMENT

ATTACHMENT: FM-1887 HIGHWAY RESURFACE OVERLAY AND TYPICAL SECTION  
PLANS (REDACTED)

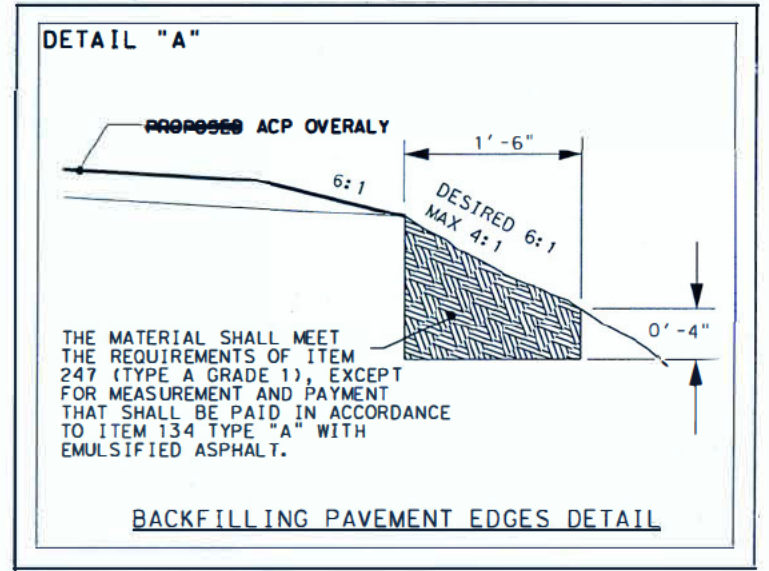
Monaville, TX  
HWY22FH002

(4 pages)



**EXISTING TYPICAL SECTION**

STA. 48+00.00 TO STA. 714+07.00

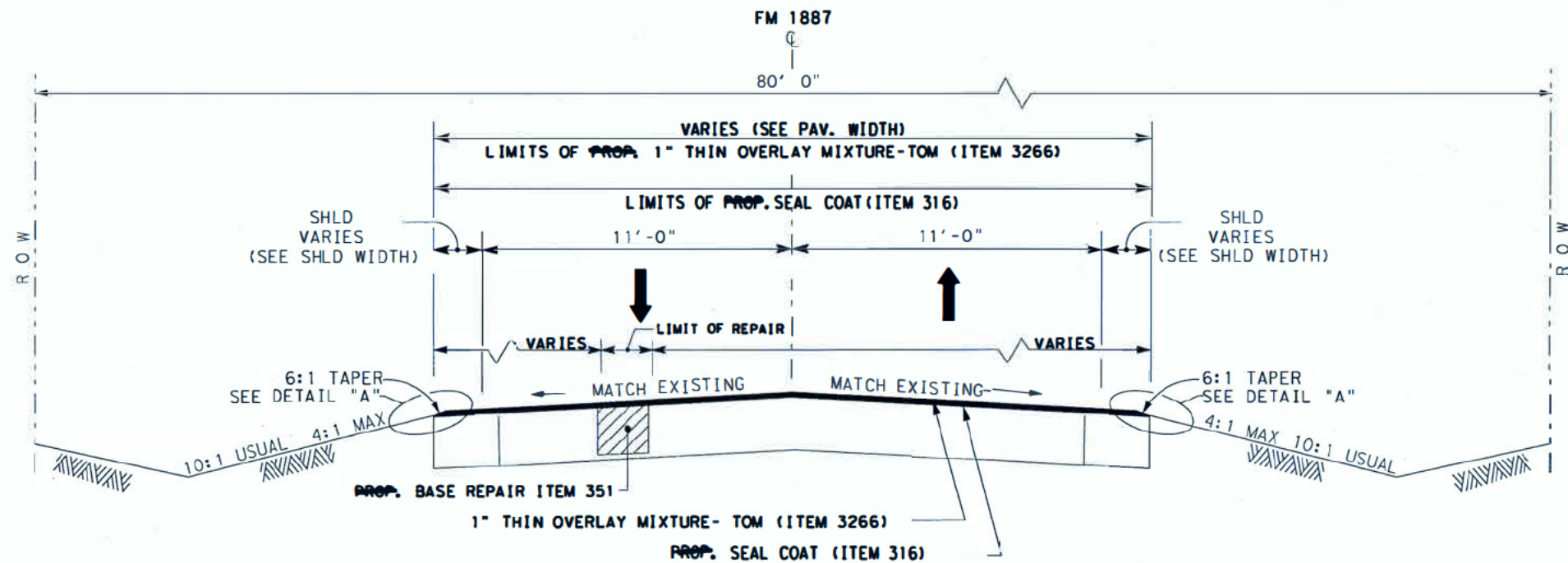


TOTAL PAVEMENT WIDTH VARIES AS FOLLOWS

STA. FROM	STA. TO	LANE WIDTH	SHLD WIDTH	PAVEMENT WIDTH
48+00.00	380+09.30	11'-0"	2'-9"	27'-6"
380+09.30	382+02.00	11' TO 12'	2'-9" TO 10' 0"	27' 6" TO 44'-0"
384+67.00	386+29.65	11' TO 12'	10'-0" TO 2'-9"	44' 0" TO 27'-6"
386+29.65	541+91.20	11'-0"	2'-0"	26'-0"
541+91.20	544+90.20	11'-0"	2'-0" TO 6'-7"	26' 0" TO 35'-2"
544+90.20	548+91.20	11'-0"	6'-7" TO 2'-0"	35'-2" TO 26' 0"
548+91.20	714.07.00	11'-0"	2'-0"	26' 0"

TYPICAL SECTION OPERATIONS BY STATIONS

STA. FROM	STA. TO	CONSTRUCTION OPERATIONS			
0+00.00	48+00.00	1/2" MILL OUT	---	---	1/2" OVERLAY
48+00.00	360+09.30	---	---	---	1/2" OVERLAY
360+09.30	380+09.30	8" MILL OUT	10" FDR	6" NEW BASE	3/2" OVERLAY
380+09.30	382+02.00	---	---	---	1/2" OVERLAY
382+02.00	384+67.00	---	---	---	---
384+67.00	386+29.65	---	---	---	1/2" OVERLAY
386+29.65	543+16.20	8" MILL OUT	10" FDR	6" NEW BASE	3/2" OVERLAY
543+16.20	544+90.20	---	---	---	1/2" OVERLAY
544+90.20	545+92.20	---	---	---	---
545+92.20	547+66.20	---	---	---	1/2" OVERLAY
547+66.20	567+73.62	8" MILL OUT	10" FDR	6" NEW BASE	3/2" OVERLAY
567+73.62	714+07.00	4" MILL OUT	10" FDR	---	3/2" OVERLAY



**PROPOSED TYPICAL SECTION**

- STA. 48+00.00 TO STA. 360+09.30 (31,209.30')
- STA. 380+09.30 TO STA. 382+02.00 (192.70')
- STA. 384+67.00 TO STA. 386+29.65 (162.65')
- STA. 543+16.20 TO STA. 544+90.20 (174.00')
- STA. 545+92.20 TO STA. 547+66.20 (174.00')

FOR THIS TYPICAL SECTION, PAY SCHEDULE 2 WILL BE USED FOR ITEM, "RIDE QUALITY FOR PAVEMENT SURFACE"

**EQUATION:**

- STA. 58+08.00 BK STA. 48+00.00 FWD (+1,008.00')
- STA. 490+21.92 BK STA. 490+37.14 FWD ( 15.22')
- STA. 558+58.81 BK STA. 558+66.23 FWD ( 7.42')

- \* STA. 382+02.00 TO STA. 384+67.00 (265') BRIDGE
  - \* STA. 544+90.20 TO STA. 545+92.20 (102') BRIDGE
- \* NOTE:  
WORK ON BRIDGES IS LIMITED TO PAVEMENT MARKINGS ONLY



© 2013 Texas Department of Transportation

FM 1887  
TYPICAL SECTION 2

FED. RD. DIV. NO.	PROJECT NO.	SHEET NO.	
6	STP 2013(545)	4	
STATE	DIST.	COUNTY	
TEXAS	HOU	WALLER	
CONT.	SECT.	JOB	HIGHWAY NO.
1745	01	019	FM 1887

DATE \$ TIME \$ FILE \$

DIR

1 3 14 15 16 10111213141516

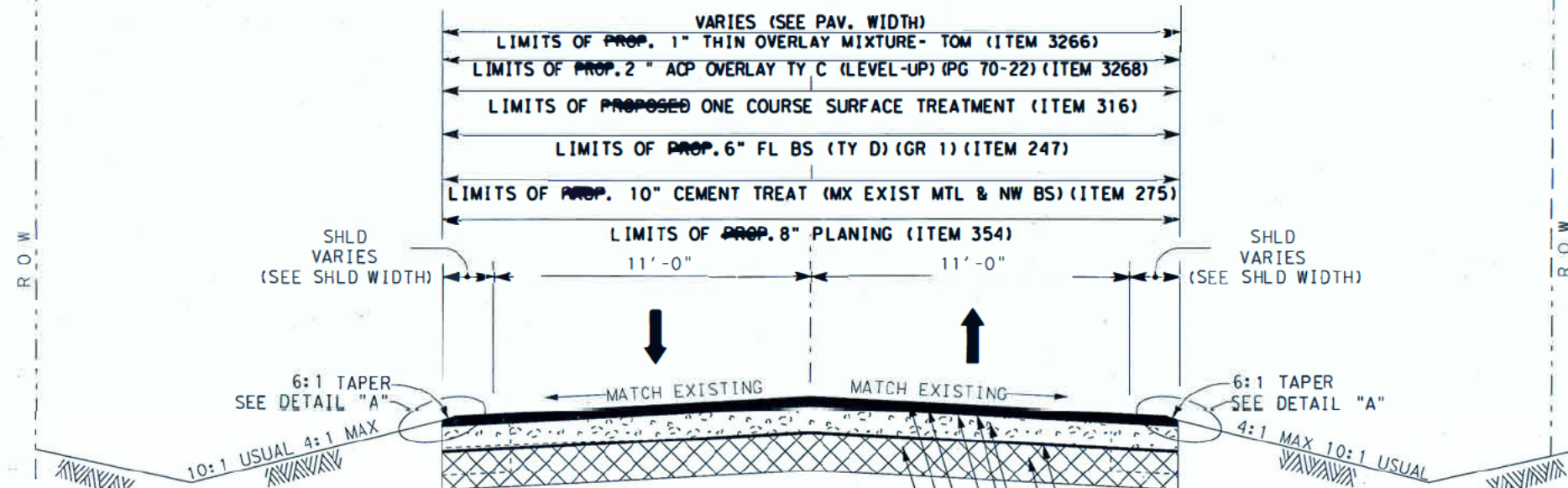
7 18 19 20 21 22 23 24 25 26 27 28 29 30 31 32

33 34 35 36 37 38 39 40 41 42 43 44 45 46 47 48

49 50 51 52 53 54 55 56 57 58 59 60 61 62 63 64

FM 1887

80' 0"



**NOTE:**  
 1. \* WORK ON BRIDGES IS LIMITED TO PAVEMENT MARKINGS ONLY  
 2. THIS PROJECT WAS NOT SURVEYED USING PRECISION EQUIPMENT OR TECHNIQUES, STATIONS AND DISTANCES ARE APPROXIMATE. CONTRACTOR IS REQUIRED TO REFERENCE, IN ORDER TO RE- ESTABLISH, THE EXISTING CENTERLINE, HORIZONTAL AND VERTICAL ALIGNMENT, ROADWAY SLOPES, AND SUPERELEVATIONS.

**NOTE:**  
 3. THE THICKNESS OF THE EXISTING HMA ON TYPICAL SECTIONS 3 AND 4 (SHEET 5 & 6) VARIES FROM 10 IN TO 16 IN

- EXIST. HMA (SEE NOTE 3)
- PROP. 1" THIN OVERLAY MIXTURE- TOM (ITEM 3266)
- PROP. 2" ACP OVERLAY TY C (LEVEL-UP) (PG 70-22) (ITEM 3268)
- PROP. ONE COURSE SURFACE TREATMENT (ITEM 316)
- PROP. PRIME COAT (ITEM 310)
- PROP. 6" FL BS (TY A) (GR 1) (ITEM 247)
- PROP. 10" CEMENT TRT BASE (3% CEMENT) (ITEM 275)
- PROP. GEOGRID (ITEM 5816)  
 APPLY GEOGRID WHERE TREES PRESENT AND MAJOR FAILURES HAVE OCCURRED. STATIONS WILL BE DETERMINED BY THE ENGINEER.

**PROPOSED TYPICAL SECTION**  
 STA. 360+09.30 TO STA. 380+09.30 (2,000.00')  
 STA. 386+29.65 TO STA. 543+16.20 (15,671.33')  
 STA. 547+66.20 TO STA. 567+73.62 (2,000.00')

**EQUATION:**  
 STA. 490+21.92 BK STA. 490+37.14 FWD ( 15.22' )  
 STA. 558+58.81 BK STA. 558+66.23 FWD ( 7.42' )  
 \* STA. 382+02.00 TO STA. 384+67.00 (265') BRIDGE  
 \* STA. 544+90.20 TO STA. 545+92.20 (102') BRIDGE

**TOTAL PAVEMENT WIDTH VARIES AS FOLLOWS**

STA. FROM	STA. TO	LANE WIDTH	SHLD WIDTH	PAVEMENT WIDTH
48+00.00	380+09.30	11' 0"	2'-9"	27' 6"
380+09.30	382+02.00	11' TO 12'	2'-9" TO 10'-0"	27'-6" TO 44'-0"
384+67.00	386+29.65	11' TO 12'	10'-0" TO 2'-9"	44'-0" TO 27'-6"
386+29.65	541+91.20	11' 0"	2'-0"	26' 0"
541+91.20	544+90.20	11'-0"	2'-0" TO 6'-7"	26'-0" TO 35'-2"
544+90.20	548+91.20	11' 0"	6' 7" TO 2'-0"	35' 2" TO 26'-0"
548+91.20	714.07.00	11'-0"	2'-0"	26' 0"

**FOR THIS TYPICAL SECTION, PAY SCHEDULE 2 WILL BE USED FOR ITEM, "RIDE QUALITY FOR PAVEMENT SURFACE"**

**TYPICAL SECTION OPERATIONS BY STATIONS**

STA. FROM	STA. TO	CONSTRUCTION OPERATIONS			
0+00.00	48+00.00	1 1/2" MILL OUT	_____	_____	1 1/2" OVERLAY
48+00.00	360+09.30	_____	_____	_____	1 1/2" OVERLAY
360+09.30	380+09.30	8" MILL OUT	10" FDR	6" NEW BASE	3 1/2" OVERLAY
380+09.30	382+02.00	_____	_____	_____	1 1/2" OVERLAY
* 382+02.00	384+67.00	PAV. MRKGS	_____	_____	_____
384+67.00	386+29.65	_____	_____	_____	1 1/2" OVERLAY
386+29.65	543+16.20	8" MILL OUT	10" FDR	6" NEW BASE	3 1/2" OVERLAY
543+16.20	544+90.20	_____	_____	_____	1 1/2" OVERLAY
* 544+90.20	545+92.20	PAV. MRKGS	_____	_____	_____
545+92.20	547+66.20	_____	_____	_____	1 1/2" OVERLAY
547+66.20	567+73.62	8" MILL OUT	10" FDR	6" NEW BASE	3 1/2" OVERLAY
567+73.62	714+07.00	4" MILL OUT	10" FDR	_____	3 1/2" OVERLAY



4/2/2013

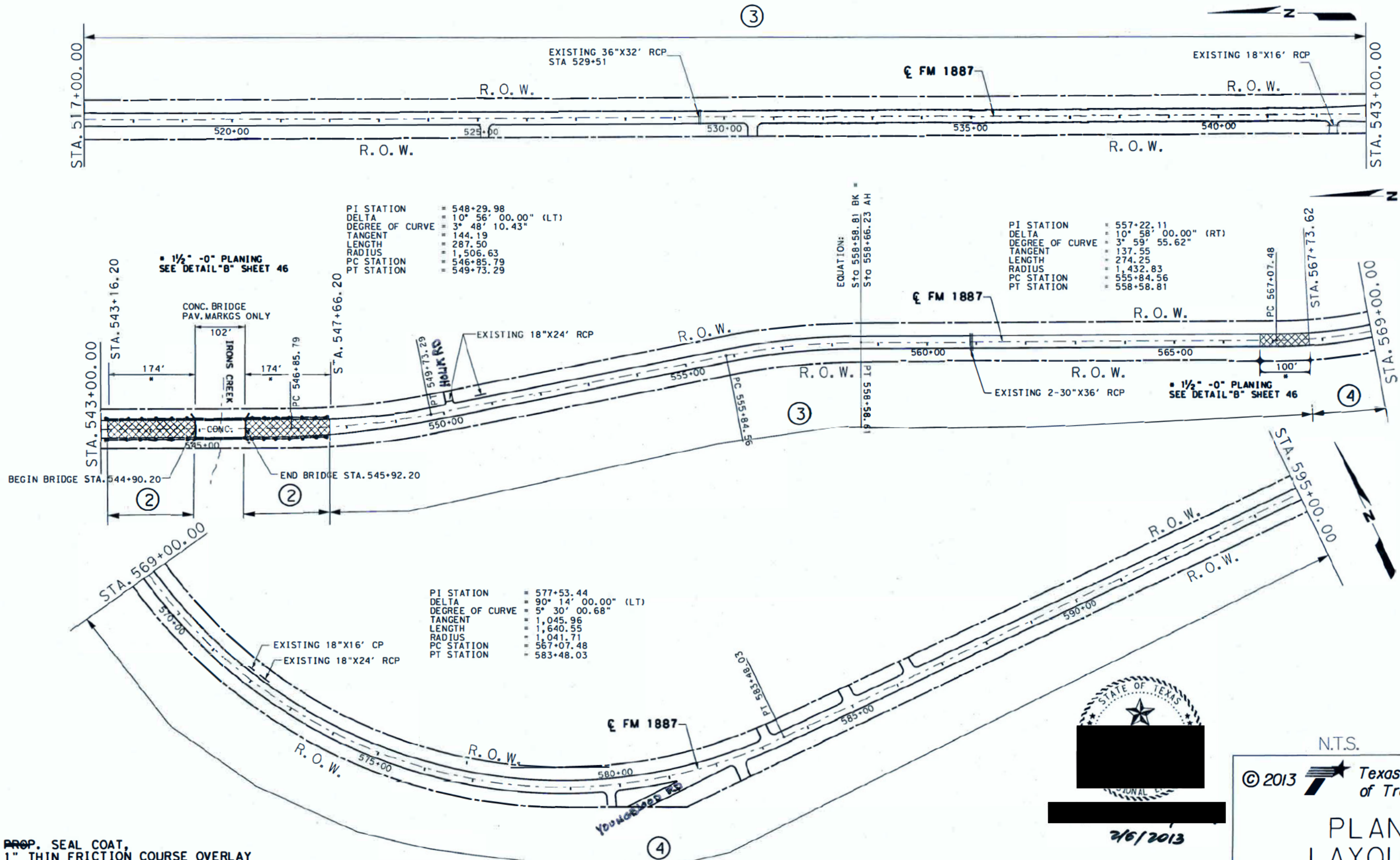
REVISED 4/3/13

N.T.S.  
 © 2013 Texas Department of Transportation

FM 1887  
 TYPICAL SECTION 3

FED. RD. DIV. NO.	PROJECT NO.	SHEET NO.
6	STP 2013(545)	5
STATE	DIST.	COUNTY
TEXAS	HOU	WALLER
CONT.	SECT.	JOB
1745	01	019
		HIGHWAY NO.
		FM 1887

LEVELS  
 1 13 14 15 16 17 18  
 17 01 20 21 22 23 24 25 26 27 28 29 30 31 32 33 34 35 36 37 38 39 40 41 42 43 44 45 46 47 48 49 50 51 52 53 54 55 56 57 58 59 60 61 62 63 64 65 66 67 68 69 70 71 72 73 74 75 76 77 78 79 80 81 82 83 84 85 86 87 88 89 90 91 92 93 94 95 96 97 98 99 100  
 D.I.R.  
 S.D.A.T.E.S.  
 S.T.I.M.E.S.  
 S.F.I.L.E.S.



PI STATION = 548+29.98  
 DELTA = 10° 56' 00.00" (LT)  
 DEGREE OF CURVE = 3° 48' 10.43"  
 TANGENT = 144.19  
 LENGTH = 287.50  
 RADIUS = 1,506.63  
 PC STATION = 546+85.79  
 PT STATION = 549+73.29

PI STATION = 557+22.11  
 DELTA = 10° 58' 00.00" (RT)  
 DEGREE OF CURVE = 3° 59' 55.62"  
 TANGENT = 137.55  
 LENGTH = 274.25  
 RADIUS = 1,432.83  
 PC STATION = 555+84.56  
 PT STATION = 558+58.81

PI STATION = 577+53.44  
 DELTA = 90° 14' 00.00" (LT)  
 DEGREE OF CURVE = 5° 30' 00.68"  
 TANGENT = 1,045.96  
 LENGTH = 1,640.55  
 RADIUS = 1,041.71  
 PC STATION = 567+07.48  
 PT STATION = 583+48.03

- ② PROP. SEAL COAT, 1" THIN FRICTION COURSE OVERLAY (SEE TYPICAL SECTION 2, SHEET 4)
- ③ PROP. 8" PLANING, 10" CEMENT TRT BASE, 6" FL BS, SEAL COAT, 1" THIN FRICTION COURSE OVERLAY (SEE TYPICAL SECTION 3, SHEET 5)
- ④ PROP. 4" PLANING, 10" CEMENT TRT BASE, SEAL COAT, 1" THIN FRICTION COURSE OVERLAY (SEE TYPICAL SECTION 4, SHEET 6)

**NOTE:**  
 1. THIS PROJECT WAS NOT SURVEYED, STATIONS AND DISTANCES ARE APPROXIMATE.  
 2. CONTRACTOR IS REQUIRED TO REFERENCE, IN ORDER TO RE-ESTABLISH, THE EXISTING CENTERLINE, HORIZONTAL AND VERTICAL ALIGNMENTS, ROADWAY SLOPES, AND SUPERELEVATIONS. NO PROFILE CHANGES. MATCH EXISTING PROFILE.



N.T.S.

© 2013 Texas Department of Transportation

## PLAN LAYOUT

SHEET 8 OF 10

FED. RD. DIST. NO.	PROJECT NO.	SHEET NO.
6	STP 1013 (545)	43
STATE	DIST.	COUNTY
TEXAS	HOU	WALLER
CONTRACT SECT.	JOB	HIGHWAY NO.
1745 01	019	FM 1887

2/6/2013 11:02:31 AM

g:\na\int-des\an\pro\jects\1m\fm 1887\1745\01\019\plan\layout\plan\layout.dwg