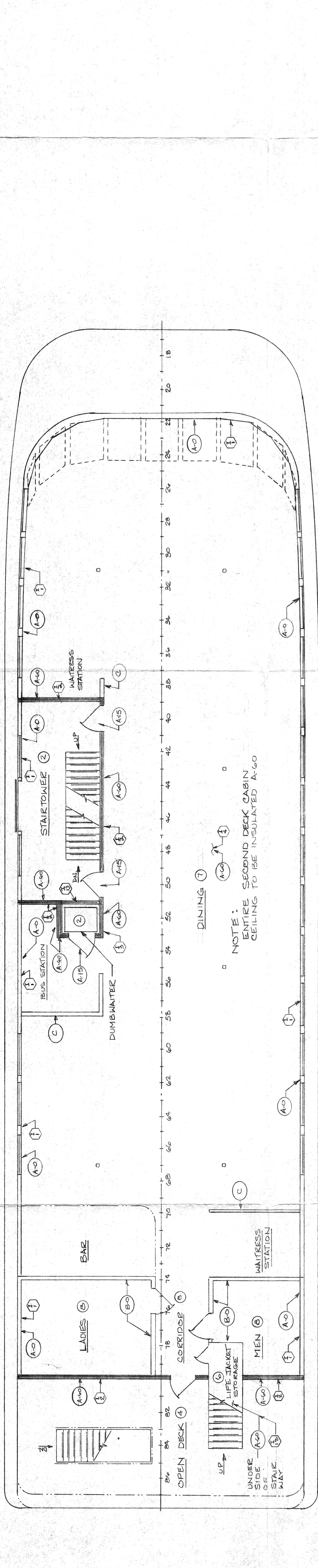
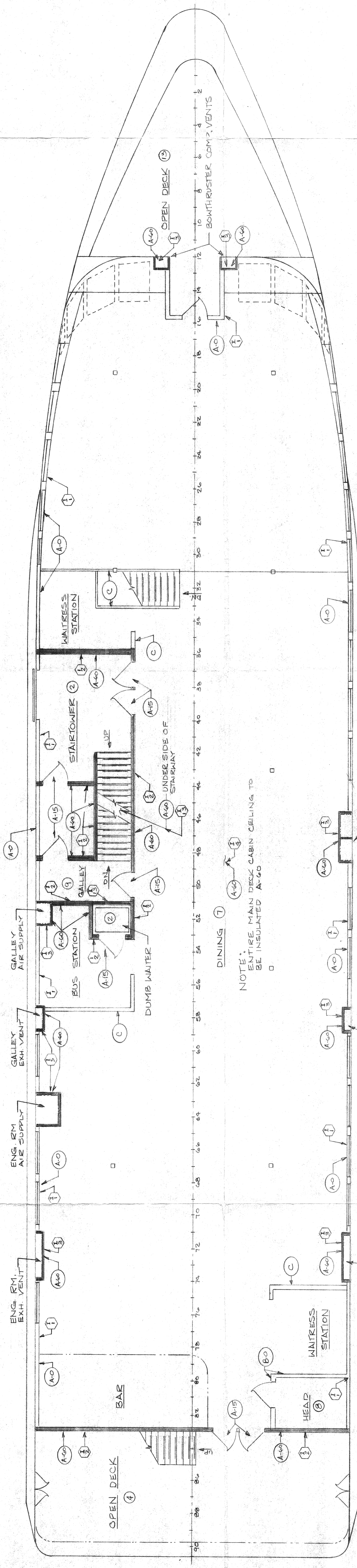


REVISION		NO.	DATE	DESCRIPTION	APVD.



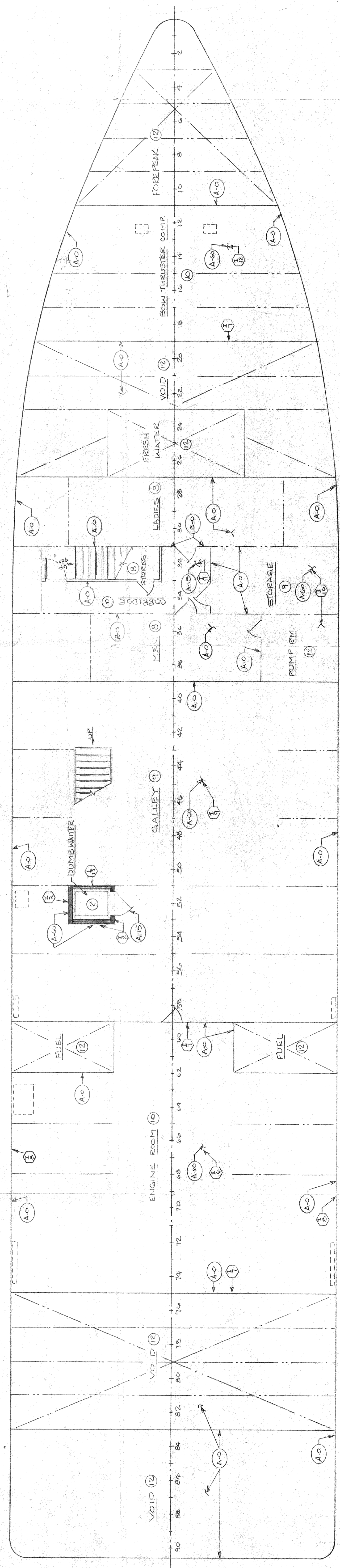
INSULATION SCHEDULE

①	2" FIBERGLASS INSULATION	THERMAL
②	3" MINERAL WOOL	3/4" MARINE TAPE
③	3" MINERAL WOOL / MYLOR FACING	A-60
④	3" MINERAL WOOL - 1/2" MINERAL WOOL WRAPPED 12" DOWN ON ALL STIFFENERS	A-60
⑤	2" FIBERGLASS INSULATION	THERMAL
⑥	3" MINERAL WOOL - 1/2" MINERAL WOOL WITH LEAD	3" MINERAL WOOL - 1/2" MINERAL WOOL WITH MYLOR - 1/2" MINERAL WOOL WITH MYLOR - 1/2" DOWN INT. BHD. & STIFFENERS
⑦	2" FIBERGLASS WITH MYLOR - TAPE ALL SEAMS	SOUND & THERMAL
⑧	2" MINERAL WOOL - 2" FIBERGLASS WITH MYLOR - TAPE ALL SEAMS	SOUND & THERMAL
⑨	3" MINERAL WOOL - 3" MINERAL WOOL - 1/2" DOWN INT. BHD. & STIFFENERS	SOUND & THERMAL
⑩	1/2" MINERAL WOOL WRAPPED 12" DOWN INT. BHD. & STIFFENERS	SOUND & THERMAL
⑪	3" MINERAL WOOL WITH MYLOR - 1/2" MINERAL WOOL WITH MYLOR - 1/2" DOWN INT. BHD. & STIFFENERS	SOUND & THERMAL
⑫	1/2" MINERAL WOOL WRAPPED 12" DOWN INT. BHD. & STIFFENERS	SOUND & THERMAL
⑬	1/2" MINERAL WOOL - 1" MINERAL WOOL WRAPPED 12" DOWN STIFFENERS	A-15
⑭	3" MINERAL WOOL - 1/2" MINERAL WOOL WITH LEAD - 2" FIBERGLASS WITH MYLOR - TAPE ALL SEAMS	SOUND & THERMAL
⑮	3" MINERAL WOOL - 1/2" MINERAL WOOL WITH MYLOR - 1/2" DOWN INT. BHD. & STIFFENERS WITH MYLOR 12" DOWN STIFFENERS & INT. BHD.	SOUND & THERMAL
⑯	3" MINERAL WOOL WITH MYLOR - 1/2" MINERAL WOOL WITH MYLOR WRAPPED ON STIFFENERS 12" DOWN INT. BHD.	A-60



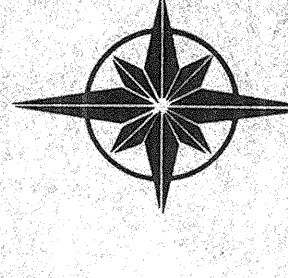
INSULATION INFORMATION

①	3" 1/2" 1" MINERAL WOOL - 8 LB. / FT <sup>3</sup> DENSITY - MFG. BY ROCK WOOL MFG. CO. - U.S.C.G. # 164.001/64/0
②	MYLOR - MFG. BY ALPH. ASSOCIATE INC. - U.S.C.G. 164.012/73/0
③	2" FIBERGLASS - THERMAL INSULATION WOOL - MFG. BY OWENS CORNING - TYPE II - U.S.C.G. # 164.009/160/11



This drawing is the exclusive property of Service Marine Industries, Inc. and is furnished on a confidential basis. No portion of this drawing may be copied, traced, photographed, or in any other way reproduced; nor may any item herein depicted be manufactured or used without the written consent of Service Marine Industries, Inc. The recipient of the information contained herein may not disclose the same to any other person or business firm; nor may he use such information except for the specific purpose intended.

STRUCTURAL FIRE PROTECTION  
INSULATION  
187'-0" X 4'-0" X 12'-8"  
DINNER / EXCURSION BOAT  
SHEET 1 OF 2



SCALE 3/16" = 1'-0"  
DATE 9-7-91  
DRAWN GEBEGE  
HULL NO. 163  
DWG. NO. 07600