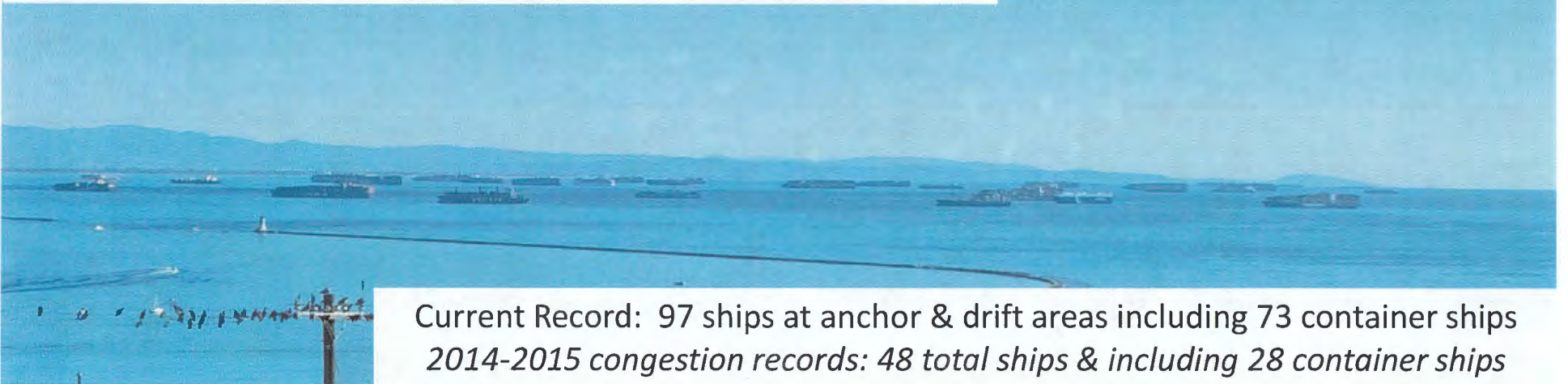


Special Huge Challenges Being Met: 1: COVID-19 backup of Tankers & Cruise Ships March-June 2020



Record: 32 ships at anchor including 24 tankers & 6 cruise ships

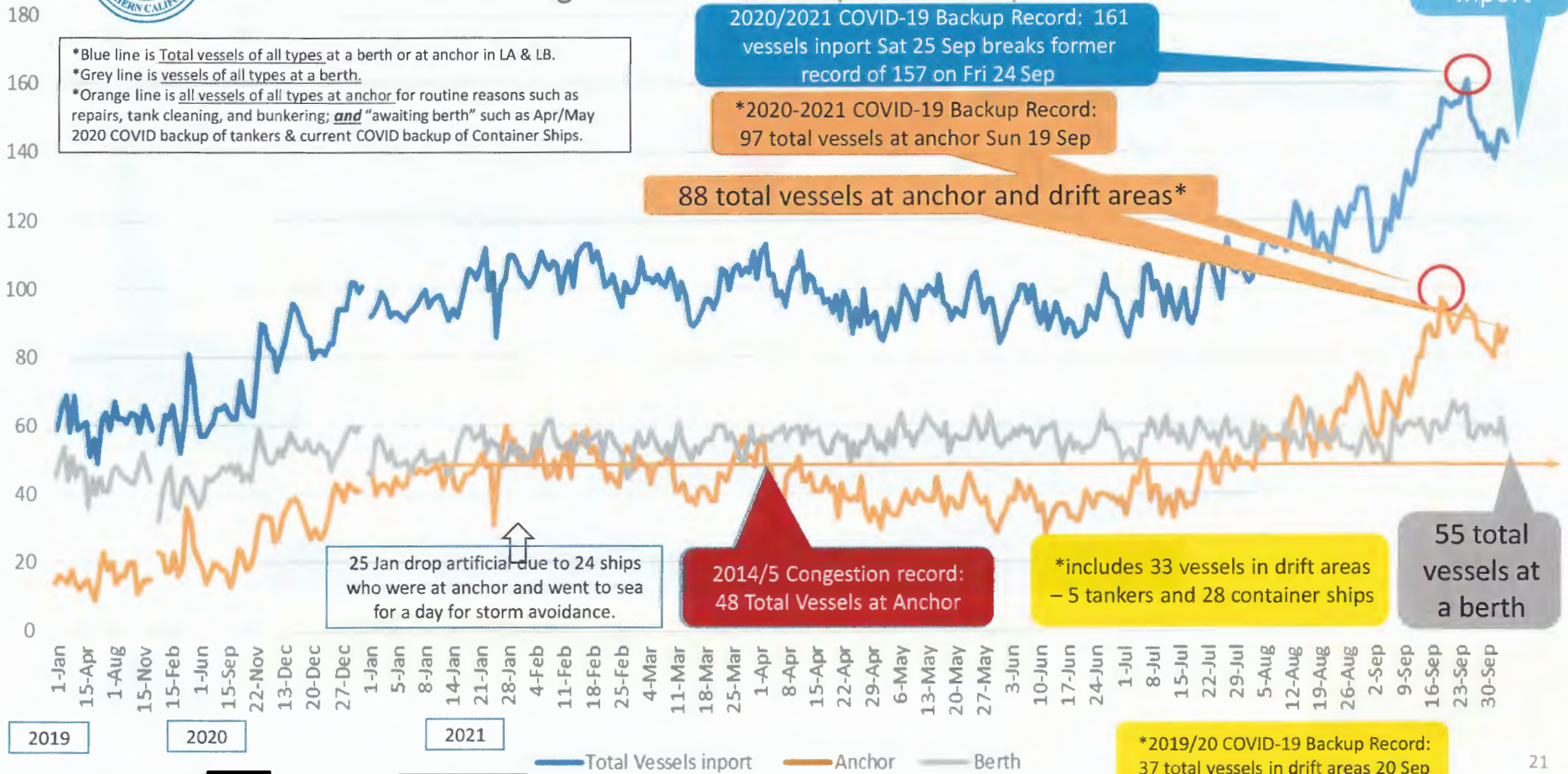
2: COVID-19 backup of Container Ships: September 2020-Ongoing



Current Record: 97 ships at anchor & drift areas including 73 container ships
2014-2015 congestion records: 48 total ships & including 28 container ships

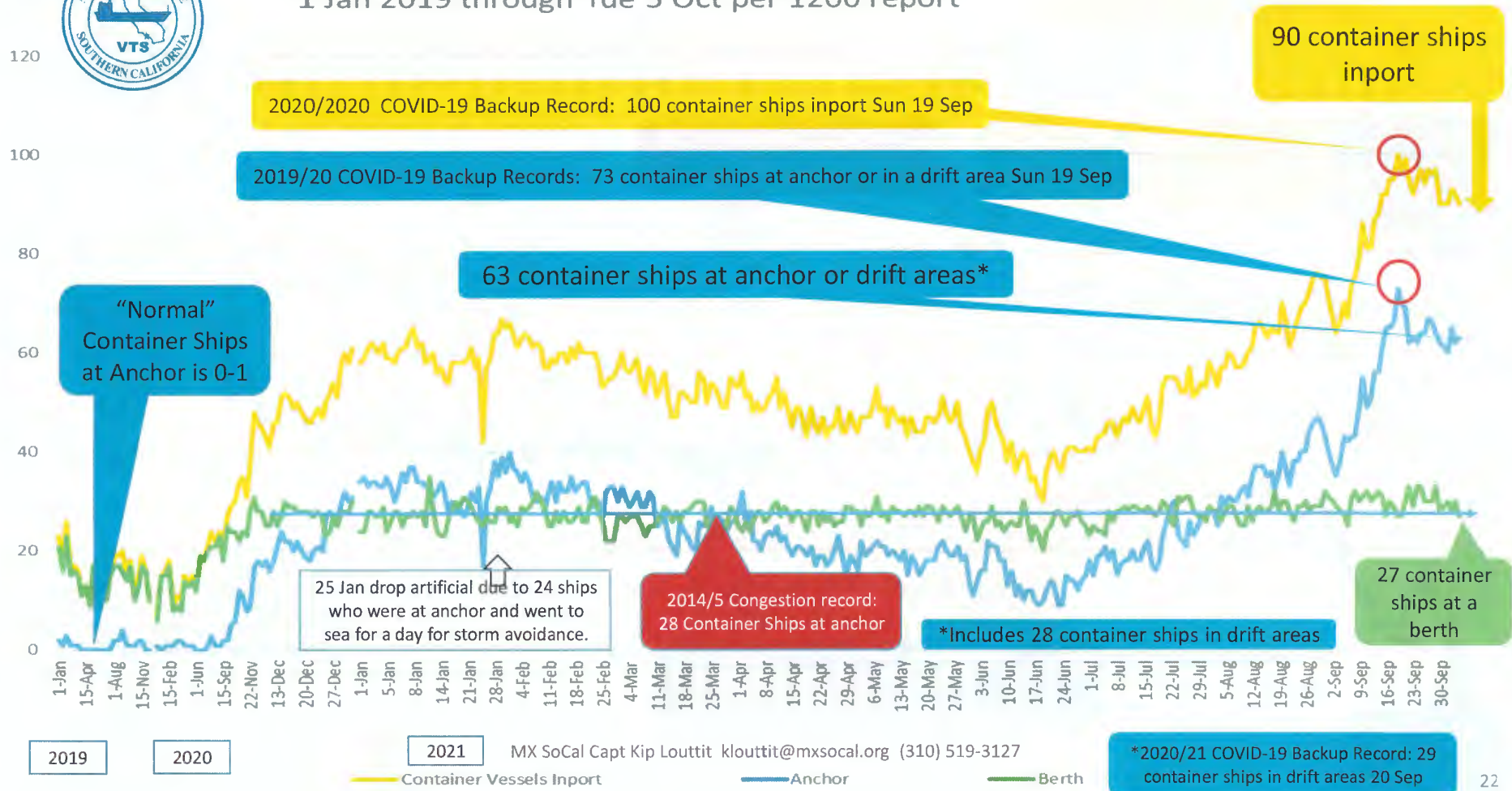


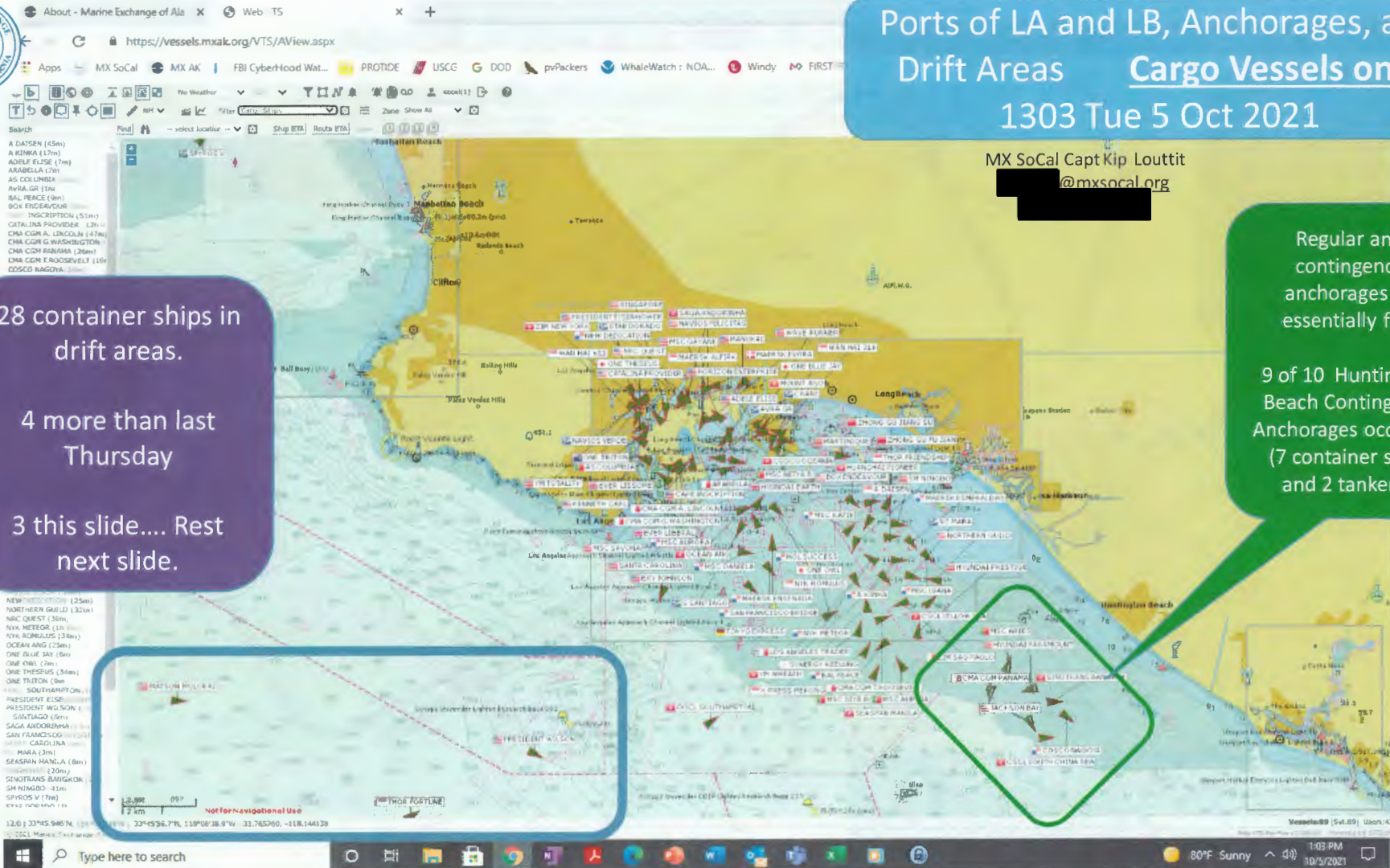
Total Vessels of all Types in Los Angeles and Long Beach 1 Jan 2019 through Tue 5 Oct 2021 per 1200 report





Total Container Ships in Los Angeles and Long Beach 1 Jan 2019 through Tue 5 Oct per 1200 report



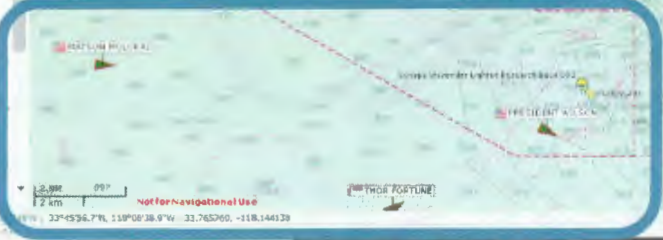


Ports of LA and LB, Anchorages, and Drift Areas Cargo Vessels only
1303 Tue 5 Oct 2021

MX SoCal Capt Kip Louttit
@mxsocialorg

28 container ships in drift areas.
4 more than last Thursday
3 this slide.... Rest next slide.

Regular and contingency anchorages all essentially full.
9 of 10 Huntington Beach Contingency Anchorages occupied (7 container ships and 2 tankers).





Ports of LA and LB, Anchorages, and Drift Areas Cargo Vessels only
1304 Tue 5 Oct 2021



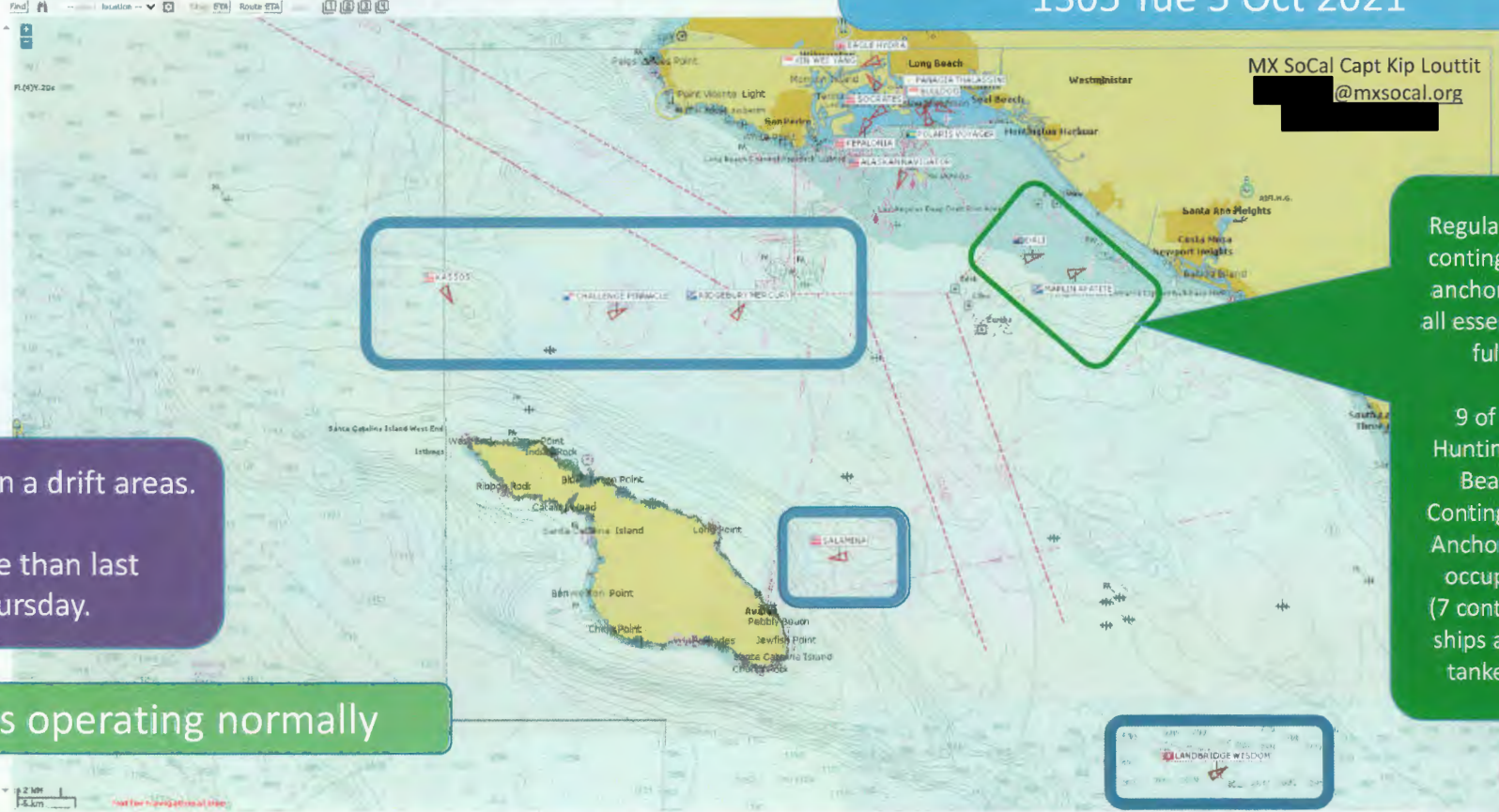
28 container ships in drift areas.
4 more than last Thursday

Regular and contingency anchorages all essentially full.
9 of 10 Huntington Beach Contingency Anchorages occupied (7 container ships and 2 tankers).

Please note that no ships drift in the shipping lanes... the "roads" in the water We keep the shipping lanes clear for moving vessels to pass safely and smoothly.



- ALASKAN NAVIGATOR
- SKULLDOG 3144
- ... (other vessel names)



Ports of LA and LB, Anchorages, and Drift Areas Tankers only
1305 Tue 5 Oct 2021

MX SoCal Capt Kip Louttit
@mxsocial.org

5 tankers in a drift areas.
2 more than last Thursday.

Tankers operating normally

Regular and contingency anchorages all essentially full.
9 of 10 Huntington Beach Contingency Anchorages occupied (7 container ships and 2 tankers).



Ports of LA and LB, and Anchorages
Passenger Vessels only
Includes ferries, sightseeing, whale watch, etc.
 1306 Tue 5 Oct 2021

MX SoCal Capt Kip Louitt
 @mxsocial.org

2 Cruise Ship inport.
Same as last Thursday.

0 at a berth in LB.

Navigator of the Seas at a berth in LA.

Regatta anchored in LB.

0 anchored off LB.



14.0 | 32°43.105'N, 118°13.530'W | 118°13.530'W, 32°43.105'N | 118°13.531'W, 32°43.107'N | 118.220505