

---

## **GENERAL INDEX**

### **CHAPTER 1    MAIN DESCRIPTION AND SPECIFICATIONS**

- 1.1 Main characteristics**
  - 1.1.1 Main specifications
- 1.2 General description of structures**
  - 1.2.1 Access - General description
- 1.3 General description of mechanisms**
  - 1.3.1 Main hoist mechanism
  - 1.3.2 Boom hoist mechanism
  - 1.3.3 Traveling mechanism
  - 1.3.4 Trolley
  - 1.3.5 Catenary trolley
  - 1.3.6 Tensioner system
  - 1.3.7 Main hinge general description
- 1.4 Safety devices & Emergency exit**
- 1.5 Lubrication**
  - 1.5.1 Lubricant functions
  - 1.5.2 Lubricating greases
  - 1.5.3 Storage

### **CHAPTER 2    OPERATION AND INSTRUCTION**

- 2.1 Introduction**
- 2.2 Protective Measures**
- 2.3 Operating instructions**
  - 2.3.1 Checking before daily work
  - 2.3.2 During operations
  - 2.3.3 Finishing operations
  - 2.3.4 Accident prevention
  - 2.3.5 Precautions during repairs
  - 2.3.6 Precautions during storms
- 2.4 Inspections and recommendations**
  - 2.4.1 Travel tracks
    - 2.4.1.1 Laying and maintenance of runway rails
    - 2.4.1.2 Items to be kept in mind
    - 2.4.1.3 Items to check
  - 2.4.2 Wheels
    - 2.4.2.1 General
    - 2.4.2.2 Inspection criteria
    - 2.4.2.3 Wear in wheel treads
  - 2.4.3 Wire ropes
    - 2.4.3.1 Caution in handling wire rope
    - 2.4.3.2 Caution in transportation
    - 2.4.3.3 Caution in storage
    - 2.4.3.4 How to unwind wire rope
    - 2.4.3.5 Caution in use
    - 2.4.3.6 Wire rope inspection
    - 2.4.3.7 Abrasion
    - 2.4.3.8 Reduction in rope diameter
    - 2.4.3.9 Corrosion
    - 2.4.3.10 Kinks

# GENERAL ASSEMBLY

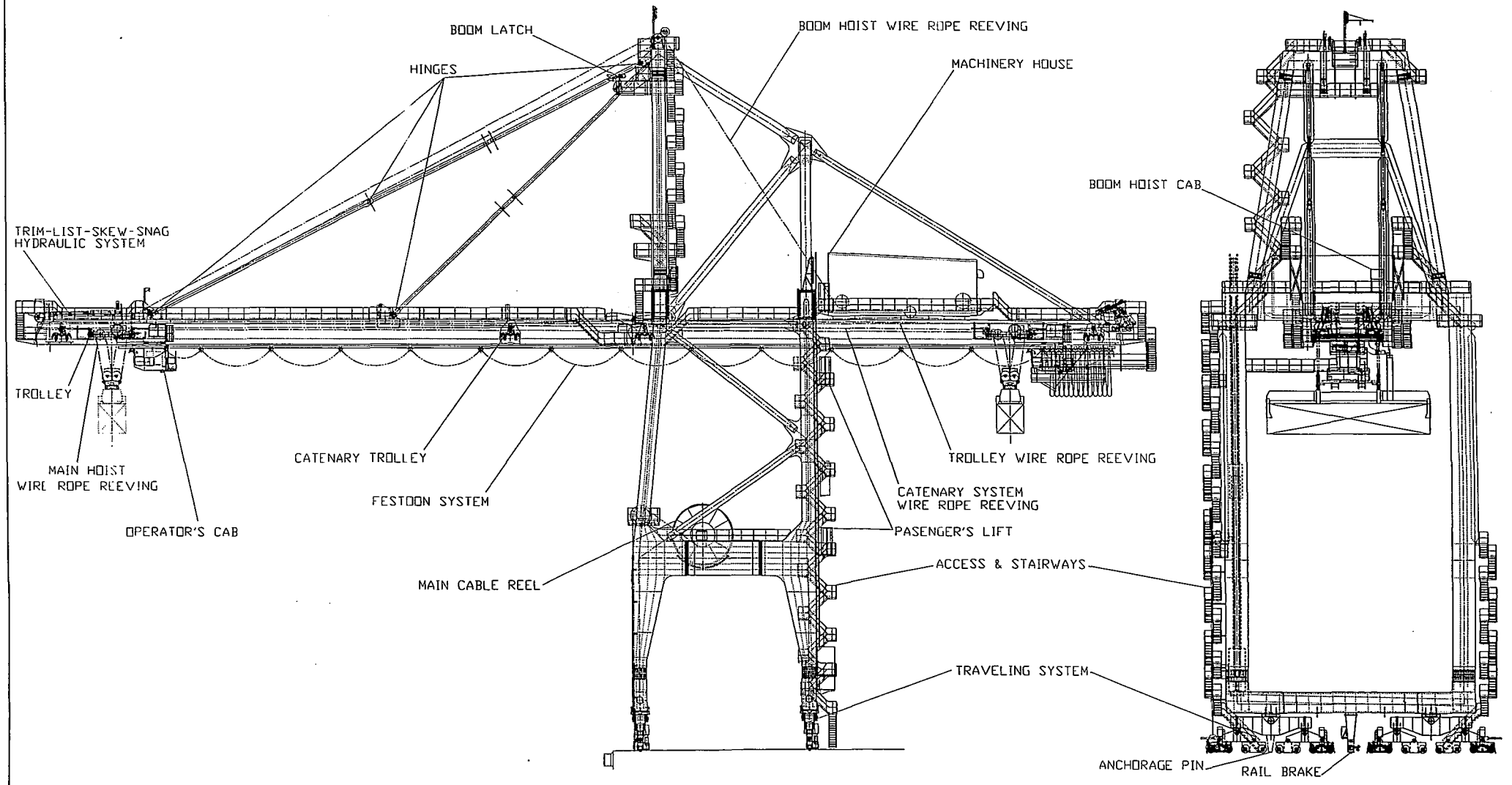


Figure 1-3

d) If it is impossible to check a component with the power off, place put a guard at dangerous places to prevent careless contact with other electrical parts. Be careful not to receive an electric shock.



- 8) Always keep a fire extinguisher close and easily readable to your working area.
- 9) Use security glasses and gloves for any kind of jobs.

### **2.3.6 PRECAUTIONS DURING STORMS**

Storms are frequently the cause of crane accidents.

The following precautions should be considered by all users of cranes vulnerable to storm damage.

- Make clear to the crane operator the working limitations of the crane, with particular reference to wind velocity and its effect upon the suspended load.
- Assure that travel brakes and storm anchorage arrangements are inspected regularly and kept in good order.
- Fit an anemometer to indicate wind velocities.
- Have appropriate buffer arrangements at the end of the tracks.
- Appoint a responsible person, with adequate practical and theoretical knowledge, to ensure that storm damage precautions are organized and maintained effectively.

When storm warning is issued, carry out the following measures without fail:

- 1) Check to see that the crane is fasten moored at the stowed position, and gantry drop pin, rail clamp and tie down are effectively applied.  
Ensure that the insertion groove of the gantry drop pin is not filled with gravel or refuse to enter; otherwise the drop pins may not be able to be properly fitted.
- 2) After moving the trolley to the stowed position, hoist up the spreader up to the vicinity of the higher-limit position. Then apply the anchorage pins.
- 3) Rise the boom up and then latch.
- 4) Turn off all drive power circuits of the crane.
- 5) Completely close and lock all the doors of the operator's cab and machinery house.
- 6) Connect the crane tie downs to the wharf devices.
- 7) In case of strong rain, place covers on electrical parts which are liable to be splashed with rainwater, because they are located near the wire rope inlet/outlet or if the window glass breaks.
- 8) Besides the above, take all conceivable measures necessary for ensuring complete safety of the crane in the storm.