

CAMPANA MARINE SERVICE, INC.

Independent Marine / Cargo Surveyors

104 Abadie Lane
Covington, Louisiana 70433

Telephone (985) 809-7555
Fax (504) 464-4672

Member: Society of Naval Architects and Marine Engineers

SURVEY REPORT 230320

March 27th, 2023

MOSAIC DAMAGE from MV SIROCCO

THIS IS TO CERTIFY that an independent Marine/ Cargo Surveyor for Campana Marine Service, Inc. did, at the request of:

ASSOCIATED TERMINALS LLC

attend a damage survey caused by the above named vessel on March 27th, 2023, while the vessel was lying afloat secured to the Convent Marine Terminal dock, Convent, Louisiana in order to conduct a damage survey owing to the vessel breaking away from the dock and allison with Associated Terminal assets, a Memco barge and the Uncle Sam dock.

ATTENDING:

Mr. Ronald Campana II

Campana Marine Service, Inc.

NARRATIVE:

At approximately 0230hrs on March 27th, 2023, the vessel M/V Sirocco, which was moored at the Convent Marine Terminal dock, broke loose and proceeded down river where the vessel was involved with an allision that involved a barge, and two floating cranes that were secured to the Uncle Sam dock. The barge was the MEM-5087 owned by ACBL and on charter with Associated Terminals LLC. The two floating cranes where the Glen S and the Burnside 2 owned by Associated Terminals LLC.

FOUND:**Barge MEM-5087-**

The barge had extensive damage to the port side consisting of:

Approximately 110' (feet) of coaming damage. Coaming and coaming frame supports bent into the hopper 4-26" (inches) causing several deck and gunwale fractures. Approximately 95' (feet) of hull side plating damage. There were several visible fractures in the hull side plating as well as bulkhead damage. Barge could be considered a total loss.

Glen S-

After an exterior hull inspection minor hull damage was observed at the time of the survey. Void tanks and interior internals will need to be inspected once the void spaces can be vented and an oxygen meter used to guarantee safe entry.

Burnside 2-

After an exterior hull inspection minor physical damage was observed at the time of the survey. Void tanks and interior internals will need to be inspected once the void spaces can be vented and an oxygen meter used to guarantee safe entry. The floating crane was slightly listing to the port side but there were no signs of leaking.

Uncle Sam Dock-

The dock sustained damage to several support pilings, trusses, dock cap and main concrete platform. The dock will need to be inspected by engineers and divers to assess full extent of the damage.

M/V Sirocco-

At approximately 0150hrs on March 27th, 2023, the vessel started to swing outward. The 2 after breast lines and after spring line parted. All other lines paid out from the drums at approximately 0230hrs. Before 0100 hours, the bridge was unmanned. The vessel was originally secured to the Convent Marine Terminal dock using the following configuration: 4 headlines, 2 doubled up breast lines, 2 spring lines, 4 stern lines, Inspection of the mooring winches and brakes revealed the following: 2 forward brake liners appear to be burned, 1 aft brake liner appears to be burned, and starboard aft brake liner is damaged. Other brake liners/pads show extreme wear and tear. Winch brakes last inspected 2021.

Conclusion:

The damage to the barge MEMCO-5087, the Glen S and Burnside 2 floating cranes and the Uncle Sam dock were all caused by the allision with the M/V Sirocco. After conducting a survey on the M/V Sirocco there was evidence of mooring winch and brake failure., improper and old mixed mooring lines and worn brake liners/pads.

Submitted without prejudice or liability.



Captain Ronald L Campana
For Campana Marine Service, Inc.

RLC/kc

Folder - Mosaic Damage



Mosaic Damage001.JPG



Mosaic Damage002.JPG



Mosaic Damage003.JPG



Mosaic Damage004.JPG



Mosaic Damage005.JPG



Mosaic Damage006.JPG

Folder - Mosaic Damage



Mosaic Damage007.JPG



Mosaic Damage008.JPG



Mosaic Damage009.JPG



Mosaic Damage010.JPG



Mosaic Damage011.JPG



Mosaic Damage012.JPG

Folder - Mosaic Damage



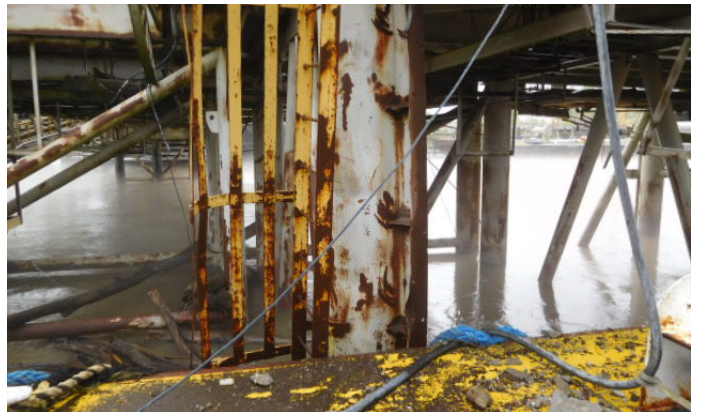
Mosaic Damage013.JPG



Mosaic Damage014.JPG



Mosaic Damage015.JPG



Mosaic Damage016.JPG



Mosaic Damage017.JPG



Mosaic Damage018.JPG

Folder - Mosaic Damage



Mosaic Damage019.JPG



Mosaic Damage020.JPG



Mosaic Damage021.JPG



Mosaic Damage022.JPG



Mosaic Damage023.JPG



Mosaic Damage024.JPG

Folder - Mosaic Damage



Mosaic Damage025.JPG



Mosaic Damage026.JPG



Mosaic Damage027.JPG



Mosaic Damage028.JPG



Mosaic Damage029.JPG



Mosaic Damage030.JPG

Folder - Mosaic Damage



Mosaic Damage031.JPG



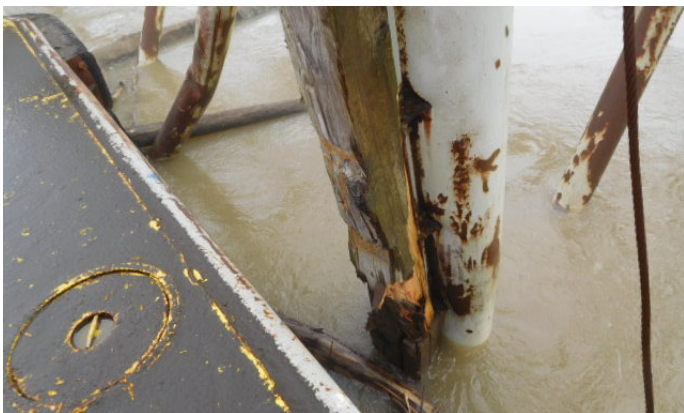
Mosaic Damage032.JPG



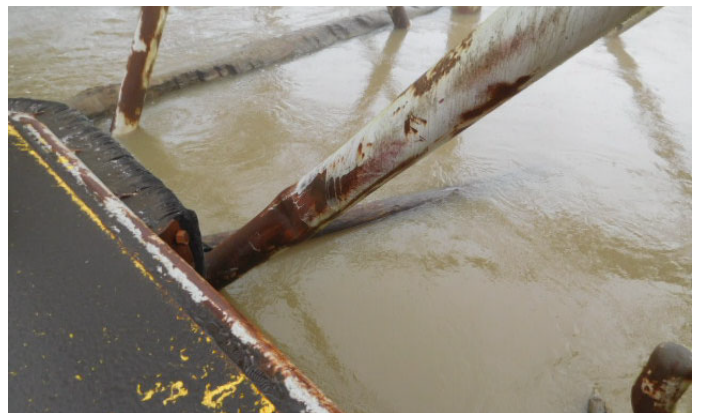
Mosaic Damage033.JPG



Mosaic Damage034.JPG



Mosaic Damage035.JPG



Mosaic Damage036.JPG

Folder - Mosaic Damage



Mosaic Damage037.JPG



Mosaic Damage038.JPG



Mosaic Damage039.JPG



Mosaic Damage040.JPG



Mosaic Damage041.JPG



Mosaic Damage042.JPG

Folder - Mosaic Damage



Mosaic Damage043.JPG



Mosaic Damage044.JPG



Mosaic Damage045.JPG



Mosaic Damage046.JPG



Mosaic Damage047.JPG

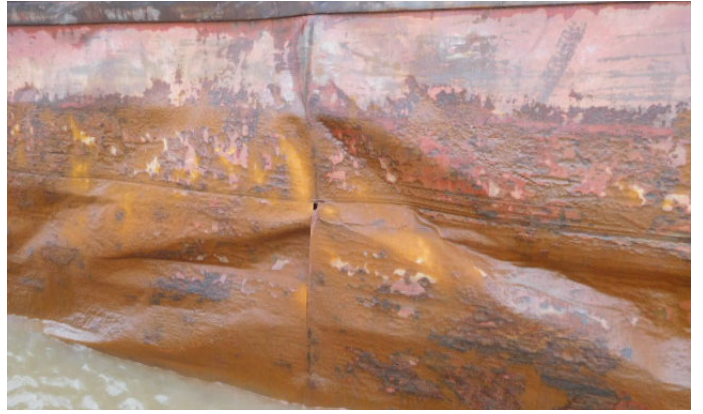


Mosaic Damage048.JPG

Folder - Mosaic Damage



Mosaic Damage049.JPG



Mosaic Damage050.JPG



Mosaic Damage051.JPG



Mosaic Damage052.JPG



Mosaic Damage053.JPG



Mosaic Damage054.jpg

Folder - Mosaic Damage



Mosaic Damage055.jpg



Mosaic Damage056.jpg



Mosaic Damage057.jpg



Mosaic Damage058.jpg



Mosaic Damage059.jpg



Mosaic Damage060.jpg

Folder - Mosaic Damage



Mosaic Damage061.jpg



Mosaic Damage062.jpg



Mosaic Damage063.jpg



Mosaic Damage064.jpg



Mosaic Damage065.jpg



Mosaic Damage066.jpg

Folder - Mosaic Damage



Mosaic Damage067.jpg



Mosaic Damage068.jpg



Mosaic Damage069.jpg



Mosaic Damage070.jpg

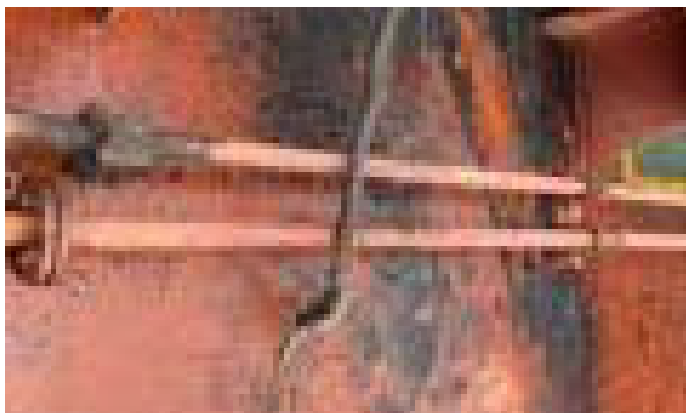


Mosaic Damage071.jpg



Mosaic Damage072.jpg

Folder - Mosaic Damage



Mosaic Damage073.jpg