

8 7 6 5 4 3 2 1

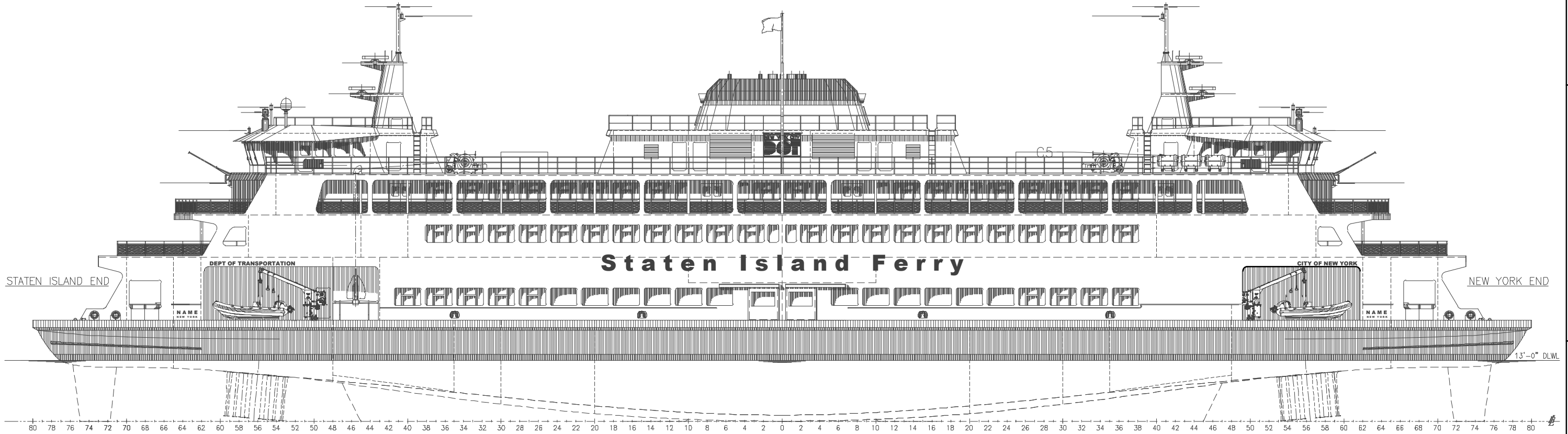
PASSENGER SEATING		PLAN INDEX			
DECK	SEATS	SHT. NO.	SCALE	TITLE	
MAIN	INTERIOR: 1093	1	3/32"=1'-0"	OUTBOARD PROFILE	
SALOON	INTERIOR: 755	2	3/32"=1'-0"	INBOARD PROFILE, FORWARD/AFT HULL ELEVATION, AFT PILOT HOUSE ELEV., PASSENGER STAIR TOWER DETAIL	
BRIDGE	INTERIOR: 509	3	3/32"=1'-0"	HOLD & UPPER HOLD (EOS) ARRANGEMENT PLANS	
	EXTERIOR: 160	4	3/32"=1'-0"	MAIN DECK & MID-MAIN DECK ARRANGEMENT PLANS	
WHEELCHAIR (ALL DECKS):	34	5	3/32"=1'-0"	SALOON & BRIDGE DECK ARRANGEMENT PLANS	
	TOTAL: 2551	6	3/32"=1'-0"	HURRICANE DECK & PILOT HOUSE TOP/MIDSHIP HOUSE TOP ARRANGEMENT PLANS	

**GENERAL NOTES**

1. THE VESSEL SHALL BE DESIGNED AND CONSTRUCTED IN ACCORDANCE WITH THE FOLLOWING REGULATIONS:

- A. ABS "RULES FOR CLASSING STEEL VESSELS FOR SERVICE ON RIVERS AND INTRACOASTAL WATERWAYS". THE VESSEL SHALL BE ASSIGNED THE FOLLOWING CLASS NOTATIONS BY ABS: +A1, FERRY SERVICE, RIVER SERVICE, + AMS.
- B. USCG 46 CFR SUB: H "RULES FOR PASSENGER VESSELS"
- C. US PUBLIC HEALTH "HANDBOOK ON SANITATION OF VESSEL CONSTRUCTION".
- D. WORLD HEALTH ORGANIZATION
- E. FEDERAL COMMUNICATIONS COMMISSION
- F. U.S. ACCESS BOARD: PASSENGER VESSEL ACCESSIBILITY GUIDELINES

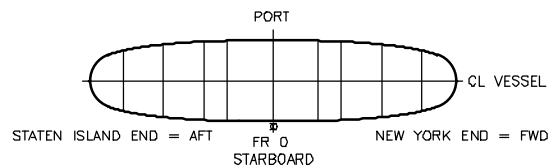
REVISIONS					
REV.	ZONE	DESCRIPTION	DATE	CKD	APVD
ALL	1.	INITIAL ISSUE.	4/17/17	MSH	ERR



**OUTBOARD PROFILE**

**PRINCIPAL DIMENSIONS**

LENGTH OVERALL: 320'-0"  
 LENGTH DESIGN LOAD WATERLINE: 308'-3 1/2"  
 BEAM (MOLDED): 70'-0"  
 BEAM OVER GUARDS: 70'-3"  
 DEPTH TO MAIN DECK AT SIDE: 21'-6"  
 DRAFT TO DLWL: 13'-0"

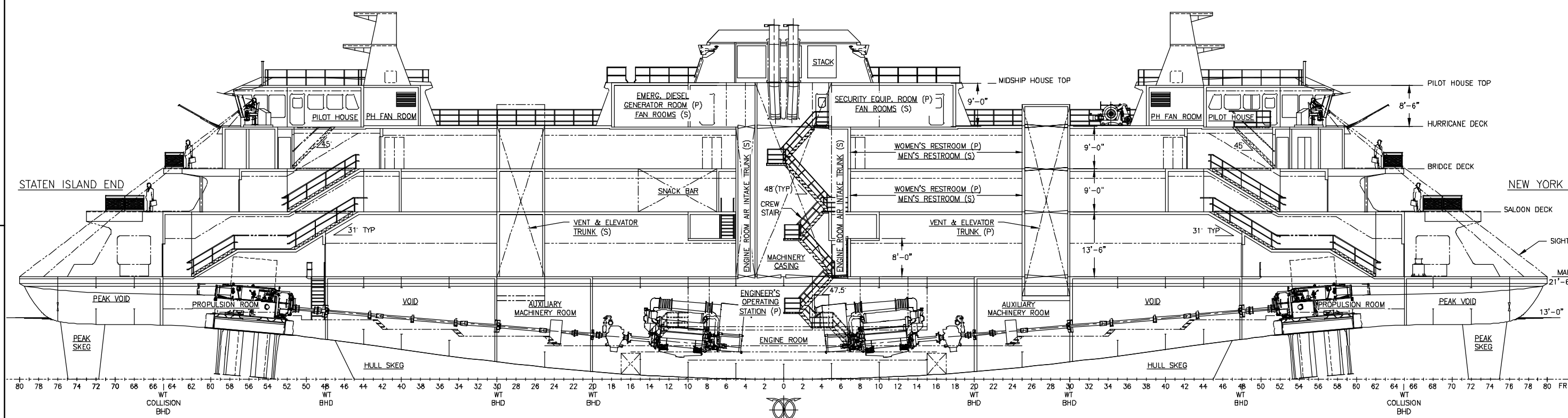


**ORIENTATION KEY PLAN**

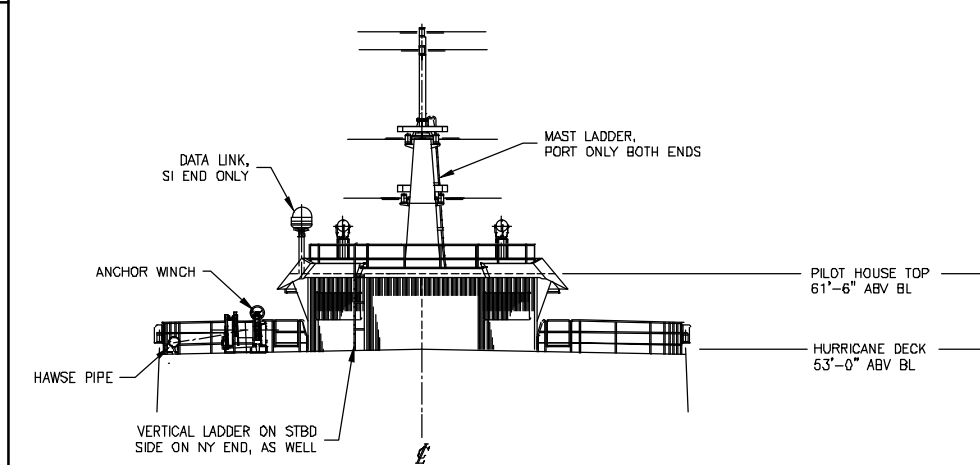
DWG	TITLE
<b>REFERENCES</b>	
<b>APPROVALS</b>	
USCG Project No.	Letter
ABS Project No.	Letter
OWNER Project No.	Letter
STAMP	<b>GUIDO PERLA &amp; ASSOCIATES, Inc.</b> 701 FIFTH AVENUE, SUITE 1200 SEATTLE, WA 98104 U.S.A. Tel: (206) 768-1515 Fax: (206) 768-9700 Email: gpa@gpai.com
	CLIENT <b>NYC DOT</b> STATEN ISLAND FERRY DIVISION
	P.O. Box 960 Panama City, Florida 32402 Telephone: (850) 763-1800 Fax: (850) 763-7804 www.easternshipbuilding.com
HULL NO.(S): ESG#219-221	PROJECT: 4500 CLASS FERRY
NOTE: THIS DRAWING IS THE PROPERTY OF EASTERN SHIPBUILDING GROUP AND GUIDO PERLA & ASSOCIATES, INC. AND MUST BE RETURNED IF IT SHALL NOT BE USED FOR CONSTRUCTION OR MANUFACTURE, OR DUPLICATED OR COPIES OR SUBMITTED TO OUTSIDE PARTIES WITHOUT OUR WRITTEN CONSENT.	
DWN MSH DATE 4/17/17	DWG No. 219-101-01
CKD GTH DATE 4/18/17	REV. -
APVD ERR DATE 4/19/17	SCALE 3/32"=1'-0" ESQ Nos: XXXXX GPA No: 85516 SHEET: 1 OF 6

PLOT DATE: Wednesday April 19 2017  
 PLOT ID: MITCHELL-HINDS  
 FILE DIR: Z:\85516 DVT & DETAIL DESIGN NYC FERRY EASTERN\ARRGTS\101-01 PROFILES AND DECK ARRANGEMENTS\  
 FILE NAME: 219-101-01 REV - PROFILES AND DK ARRGTS.DWG  
 PLOT TIME: 01:18:11 pm

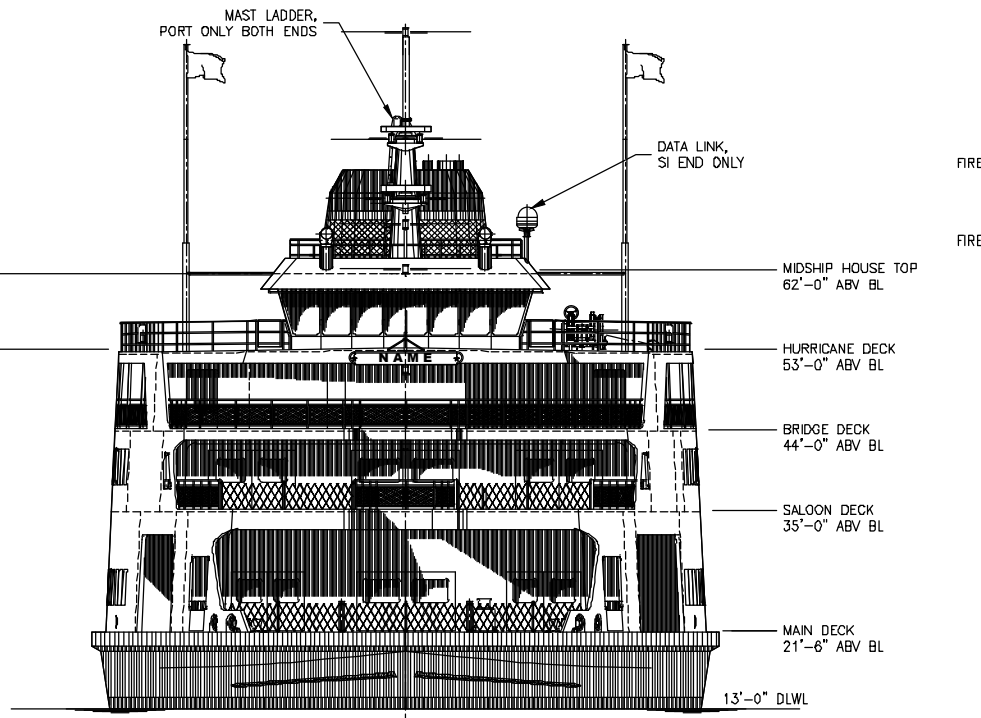
8 7 6 5 4 3 2 1



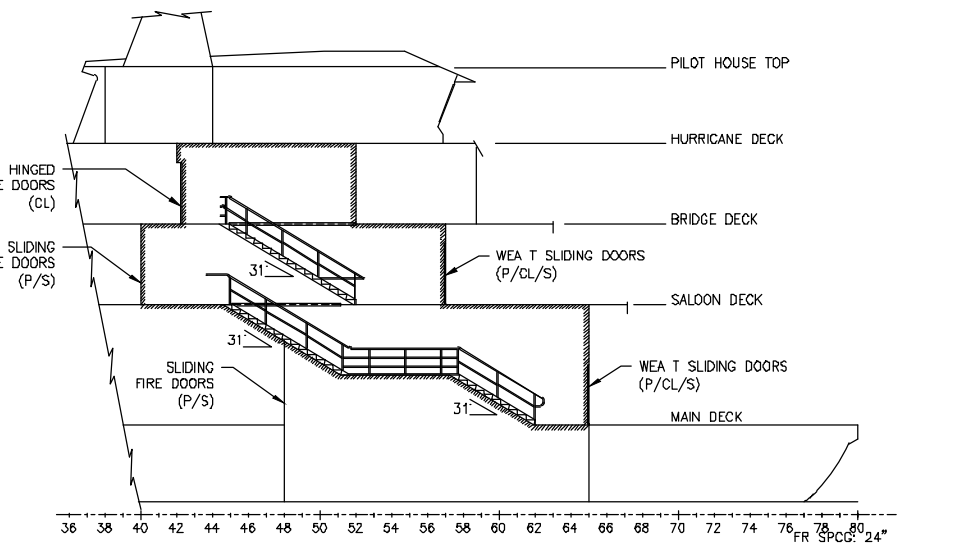
INBOARD PROFILE



SECTION 2-7A  
LOOKING AT AFT FACE OF PILOT HOUSE  
SI END SHOWN, NY END SIM  
EXCEPT WHERE NOTED



SECTION 2-5A  
FORWARD/AFT ELEVATION  
SI END SHOWN, NY END SIM  
EXCEPT WHERE NOTED

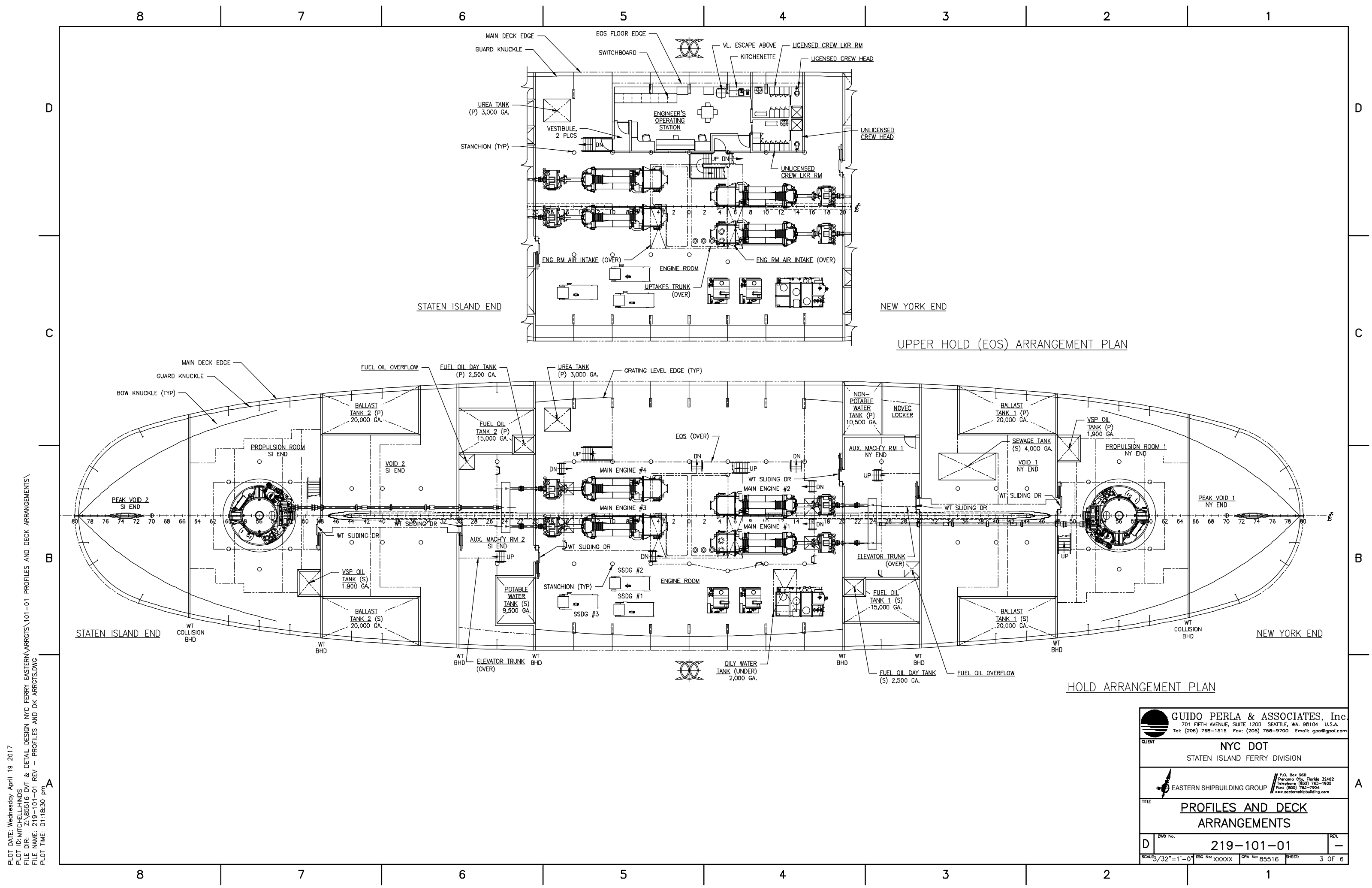


ELEVATION 2-2A  
PASSENGER STAIR TOWER  
NEW YORK END SHOWN,  
STATEN ISLAND END OPPOSITE HAND

PLOT DATE: Wednesday April 19 2017  
PLOT ID: MITCHELL-HINDS  
FILE DIR: Z:\85516 DVT & DETAIL DESIGN NYC FERRY EASTERN\ARRGTS\101-01 PROFILES AND DECK ARRANGEMENTS  
FILE NAME: 219-101-01 REV - PROFILES AND DK ARRGT.S.DWG  
PLOT TIME: 01:18:21 pm

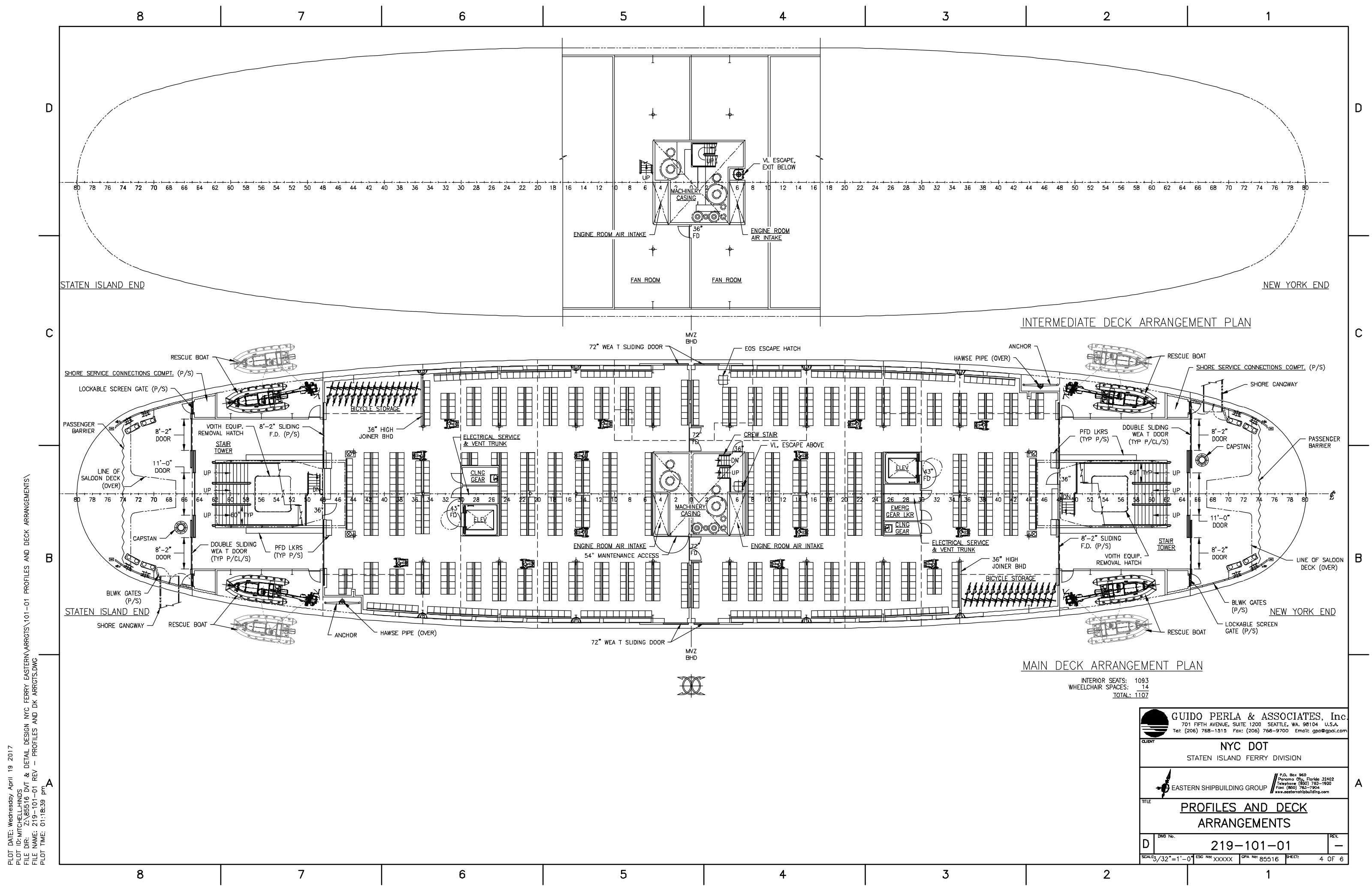
<b>GUIDO PERLA &amp; ASSOCIATES, Inc.</b> 701 FIFTH AVENUE, SUITE 1200 SEATTLE, WA, 98104 U.S.A. Tel: (206) 768-1515 Fax: (206) 768-9700 Email: gpa@gpai.com	
<b>CLIENT</b> <b>NYC DOT</b> STATEN ISLAND FERRY DIVISION	
<b>EASTERN SHIPBUILDING GROUP</b>	
<b>TITLE</b> <b>PROFILES AND DECK ARRANGEMENTS</b>	
<b>DWG No.</b> <b>D</b>	<b>REV.</b> <b>-</b>
<b>SCALE</b> 3/32"=1'-0"	<b>ESG No.</b> XXXXX
<b>DWG No.</b> 219-101-01	<b>REV.</b> -
<b>DATE</b> 8/5/16	<b>SHEET</b> 2 OF 6

8 7 6 5 4 3 2 1



PLOT DATE: Wednesday April 19 2017  
 PLOT ID: MITCHELL/HINDS  
 FILE DIR: Z:\85516 DVT & DETAIL DESIGN NYC FERRY EASTERN\ARRGTS\101-01 PROFILES AND DECK ARRANGEMENTS  
 FILE NAME: 219-101-01 REV - PROFILES AND DK ARRGTG.DWG  
 PLOT TIME: 01:18:30 pm



<b>GUIDO PERLA &amp; ASSOCIATES, Inc.</b> 701 FIFTH AVENUE, SUITE 1200 SEATTLE, WA, 98104 U.S.A. Tel: (206) 768-1515 Fax: (206) 768-9700 Email: gpa@gpai.com	
<b>CLIENT</b> <b>NYC DOT</b> STATEN ISLAND FERRY DIVISION	
<b>EASTERN SHIPBUILDING GROUP</b> <small>P.O. Box 960          Panama City, Florida 32402          Telephone (850) 763-1900          Fax: (850) 763-7504          www.easternshipbuilding.com</small>	
<b>TITLE</b> <b>PROFILES AND DECK ARRANGEMENTS</b>	
<b>DWG No.</b> <b>219-101-01</b>	<b>REV.</b> <b>-</b>
<small>SCALE: 3/32"=1'-0"</small>	<small>ESG No: XXXXX GPA No: 85516 SHEET: 3 OF 6</small>



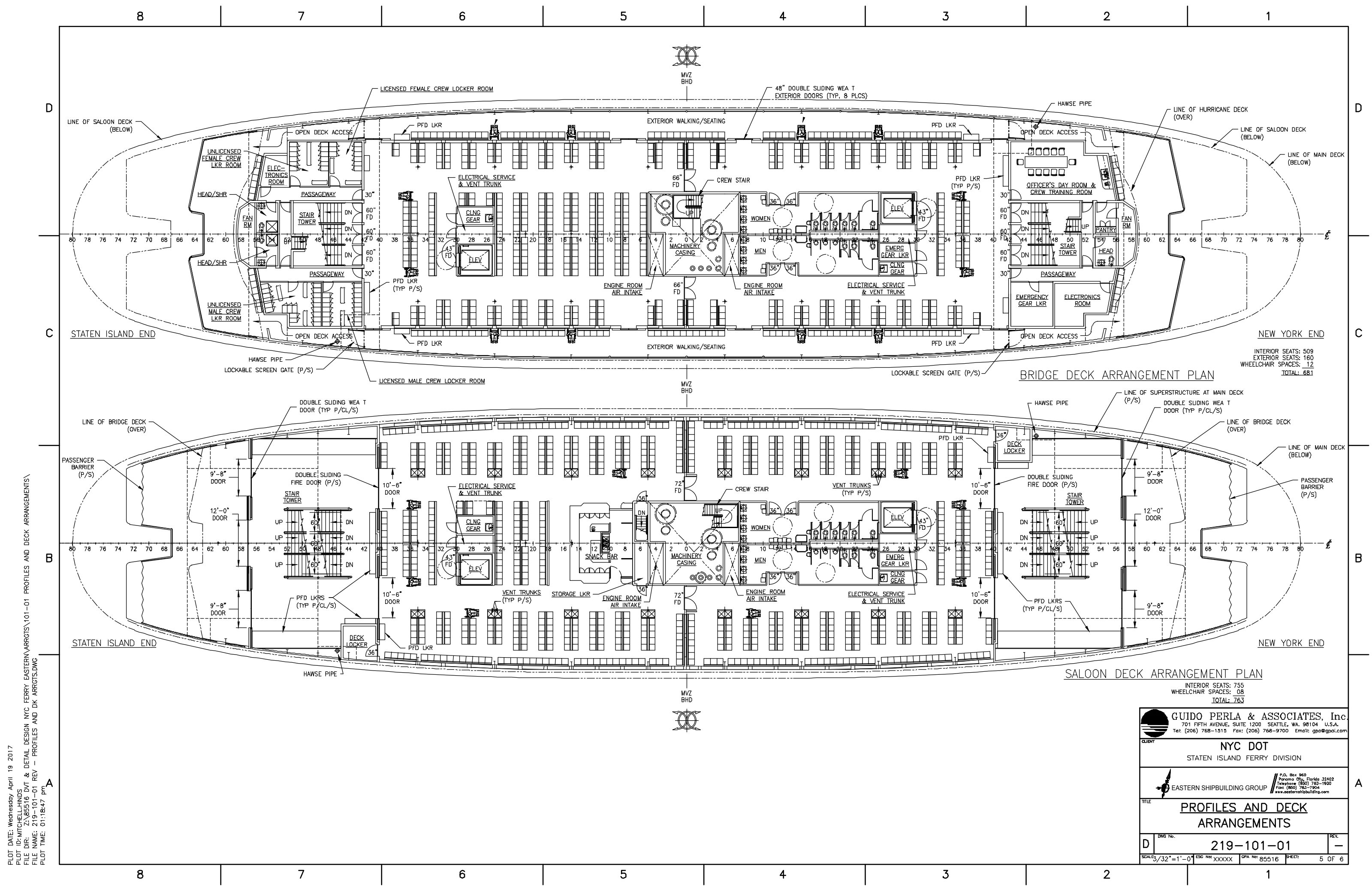
INTERMEDIATE DECK ARRANGEMENT PLAN

MAIN DECK ARRANGEMENT PLAN

INTERIOR SEATS: 1093  
 WHEELCHAIR SPACES: 14  
 TOTAL: 1107

 <b>GUIDO PERLA &amp; ASSOCIATES, Inc.</b> 701 FIFTH AVENUE, SUITE 1200 SEATTLE, WA, 98104 U.S.A. Tel: (206) 768-1515 Fax: (206) 768-9700 Email: gpa@gpai.com	
<b>CLIENT</b> <b>NYC DOT</b> STATEN ISLAND FERRY DIVISION	
 <b>EASTERN SHIPBUILDING GROUP</b>	
P.O. Box 969 Panama City, Florida 32402 Telephone (904) 763-1900 Fax: (904) 763-7504 www.easternshipbuilding.com	
<b>TITLE</b> <b>PROFILES AND DECK ARRANGEMENTS</b>	
<b>DWG No.</b> <b>D</b>	<b>REV.</b> <b>219-101-01</b>
SCALE: 1/32"=1'-0" ESC No: XXXXX GPA No: 85516 SHEET:	<b>4 OF 6</b>

PLOT DATE: Wednesday April 19 2017  
 PLOT ID: MITCHELL\_HINDS  
 FILE DIR: Z:\85516 DWT & DETAIL DESIGN NYC FERRY EASTERN\ARRGTS\101-01 PROFILES AND DECK ARRANGEMENTS  
 FILE NAME: 219-101-01 REV - PROFILES AND DK ARRGTS.DWG  
 PLOT TIME: 01:18:39 pm



INTERIOR SEATS: 508  
 EXTERIOR SEATS: 160  
 WHEELCHAIR SPACES: 12  
 TOTAL: 681

INTERIOR SEATS: 755  
 WHEELCHAIR SPACES: 08  
 TOTAL: 763

**GUIDO PERLA & ASSOCIATES, Inc.**  
 701 FIFTH AVENUE, SUITE 1200 SEATTLE, WA 98104 U.S.A.  
 Tel: (206) 768-1515 Fax: (206) 768-9700 Email: gpa@gpai.com

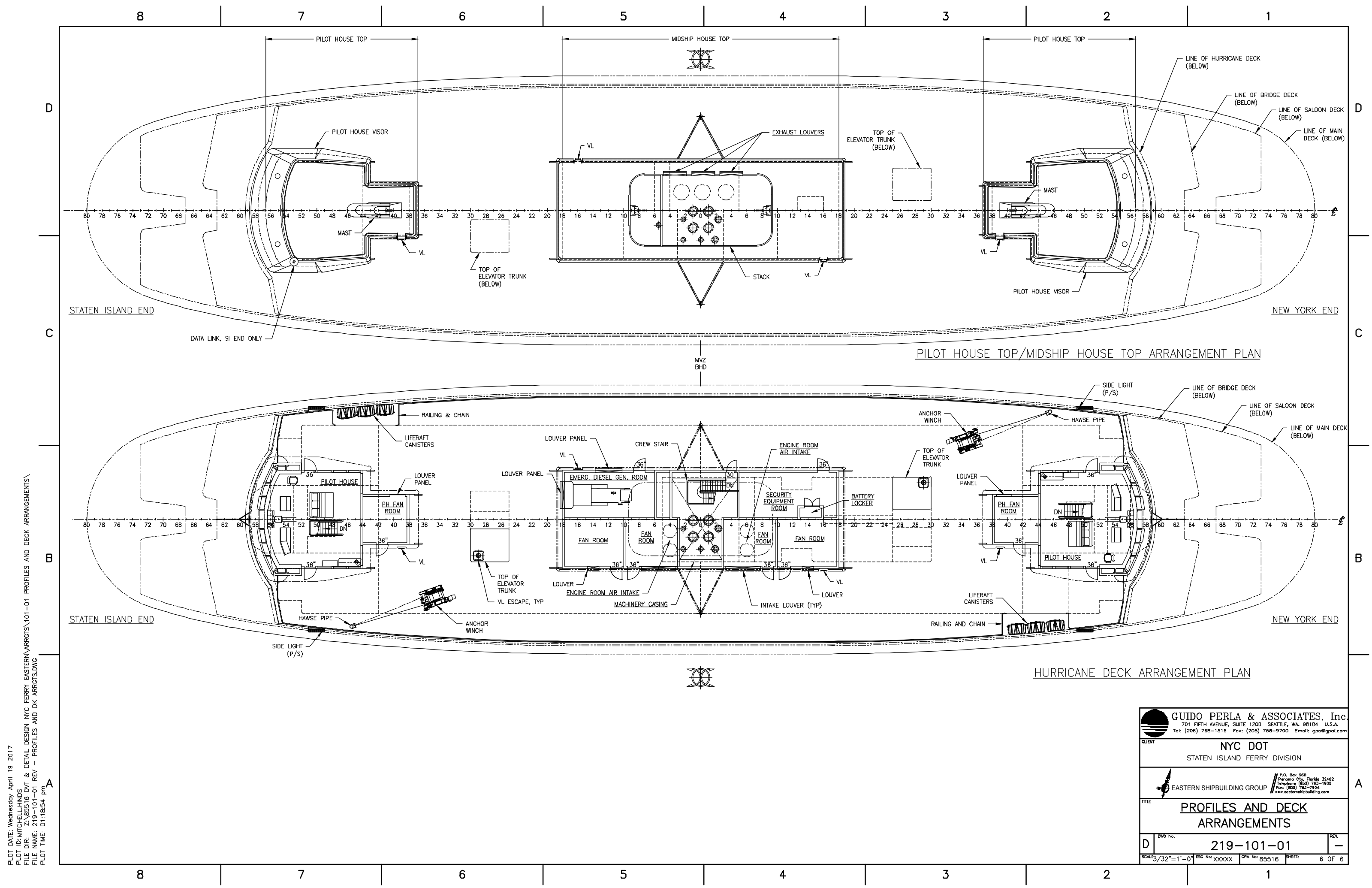
**CLIENT**  
 NYC DOT  
 STATEN ISLAND FERRY DIVISION

**EASTERN SHIPBUILDING GROUP**  
 P.O. Box 969  
 Panama City, Florida 32402  
 Telephone (850) 763-1900  
 Fax: (850) 763-7904  
 www.easternshipbuilding.com

**TITLE**  
 PROFILES AND DECK  
 ARRANGEMENTS

DWG No. **219-101-01** REV. **-**  
 SCALE: 3/32"=1'-0" ESC No: XXXXX GPA No: 85516 SHEET: 5 OF 6



PLOT DATE: Wednesday April 19 2017  
 PLOT ID: MITCHELL-HINDS  
 FILE DIR: Z:\85516 DVT & DETAIL DESIGN NYC FERRY EASTERN\ARRGTS\101-01 PROFILES AND DECK ARRANGEMENTS  
 FILE NAME: 219-101-01 REV - PROFILES AND DK ARRGTS.DWG  
 PLOT TIME: 01:18:47 pm



PILOT HOUSE TOP/MIDSHIP HOUSE TOP ARRANGEMENT PLAN

HURRICANE DECK ARRANGEMENT PLAN

PLOT DATE: Wednesday April 19 2017  
 PLOT ID: MITCHELL\_HINDS  
 FILE DIR: Z:\85516 DVT & DETAIL DESIGN NYC FERRY EASTERN\ARRGTS\101-01 PROFILES AND DECK ARRANGEMENTS  
 FILE NAME: 219-101-01 REV - PROFILES AND DK ARRGTS.DWG  
 PLOT TIME: 01:18:54 pm

 <b>GUIDO PERLA &amp; ASSOCIATES, Inc.</b> 701 FIFTH AVENUE, SUITE 1200 SEATTLE, WA, 98104 U.S.A. Tel: (206) 768-1515 Fax: (206) 768-9700 Email: gpa@gpai.com	
<b>CLIENT</b> <b>NYC DOT</b> STATEN ISLAND FERRY DIVISION	
 <b>EASTERN SHIPBUILDING GROUP</b> <small>P.O. Box 960          Panama City, Florida 32402          Telephone (850) 763-1900          Fax: (850) 763-7504          www.easternshipbuilding.com</small>	
<b>TITLE</b> <b>PROFILES AND DECK ARRANGEMENTS</b>	
<b>DWG No.</b> <b>D</b>	<b>REV.</b> <b>219-101-01</b> <small>SCALE: 3/32"=1'-0" ESC No: XXXXX GPA No: 85516 SHEET: 6 OF 6</small>