



Photo 1 – Supplied photo of removed sparkplugs.



Photo 2 - Supplied photo of the fuel strainer in the nose wheel well.



Photo 3 - Supplied photo of about 1/2 gallon of liquid consistent with water from the right header fuel tank.



Photo 4 - Supplied photo of about 1/2 gallon of liquid consistent with water from the left header fuel tank.



Photo 5 - Supplied photo of the fuel filter screen.



Photo 6 - Supplied close-up photo of the fuel filter screen.



Photo 7 - Supplied close-up photo of the fuel manifold valve.



Photo 8 - Supplied close-up photo of the disassembled fuel manifold valve.



Photo 9 - Supplied close-up photo of the screen in the disassembled fuel manifold valve.

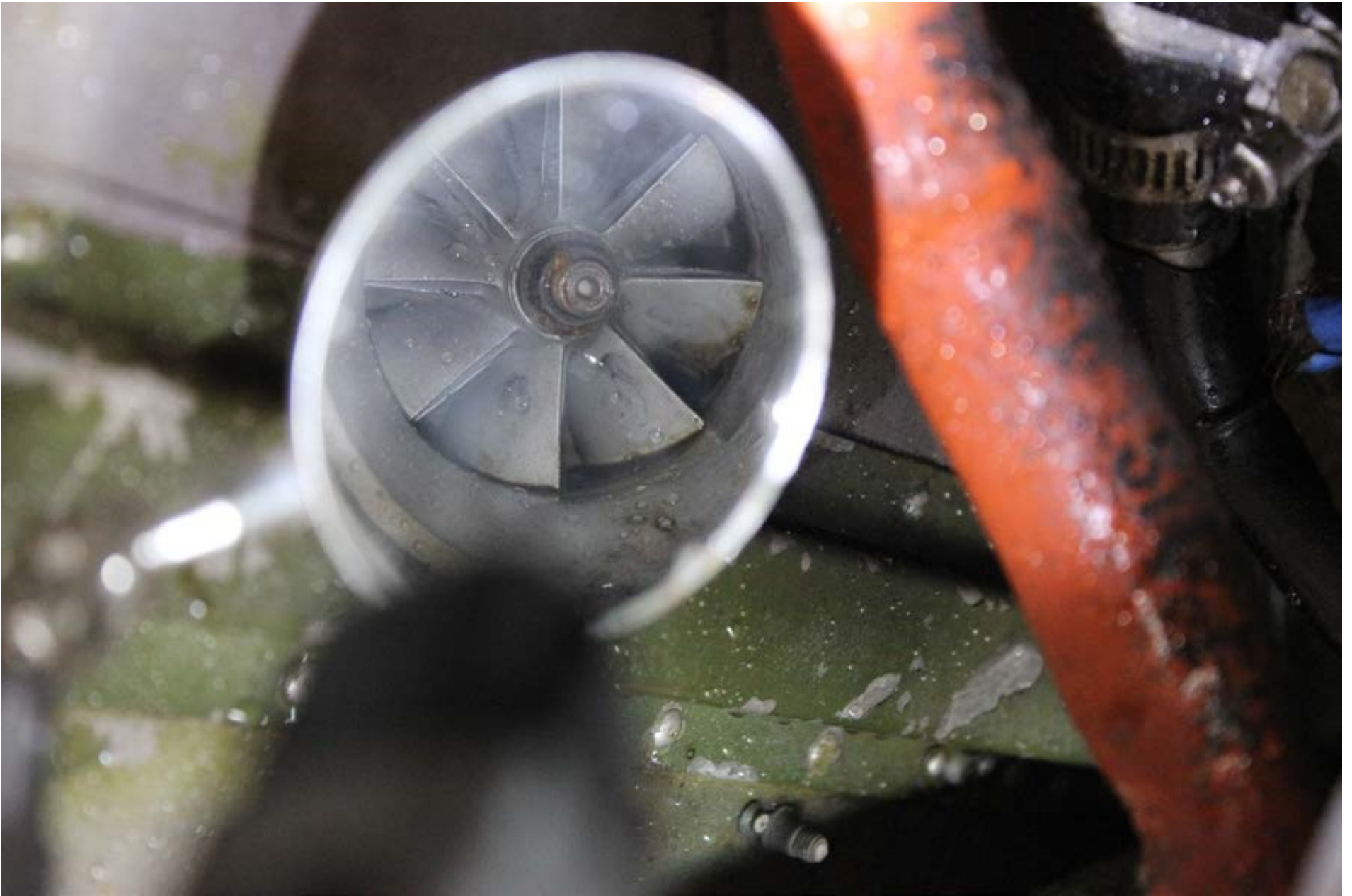


Photo 10 - Supplied close-up photo of the turbocharger inlet.



Photo 11 - Supplied photo of the airplane being moved.



Photo 12 - Supplied photo of the airplane being moved towards a trailer.



Photo 13 - Supplied photo of the airplane secured on a trailer.

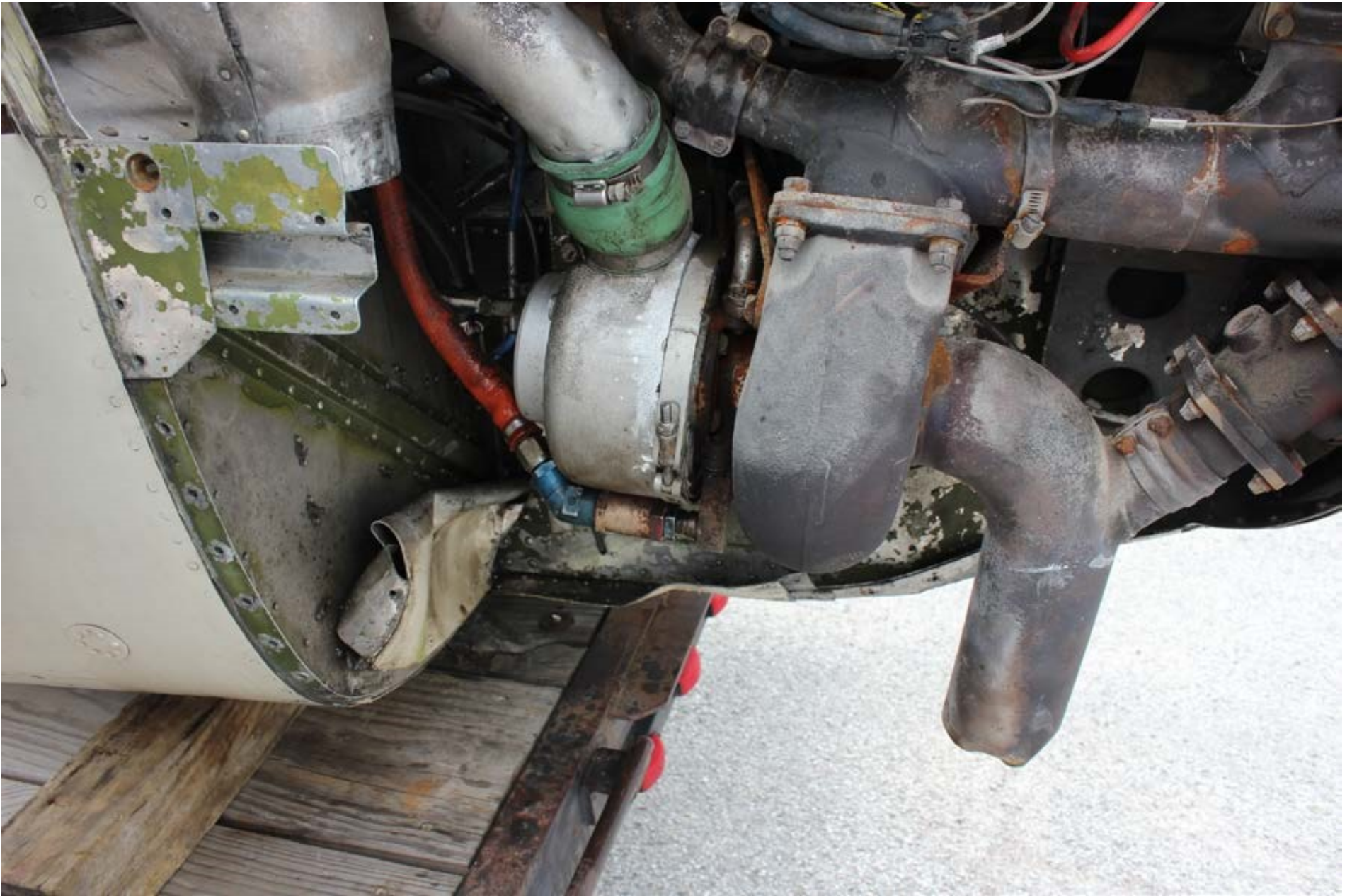


Photo 14 - Supplied photo of the turbocharger.



Photo 15 - Supplied photo of the engine start.



Photo 16 - Supplied photo of the engine run.