



Photo 1 – Supplied photo with a view of the right side of the helicopter.



Photo 2 - Supplied photo with a view of the right side of the tailboom.



Photo 3 - Supplied photo with a view of the front of the helicopter.



Photo 4 - Supplied photo with a view of the left side of the helicopter.



Photo 5 - Supplied photo with a view of the tail rotor.



Photo 6 - Supplied photo with a view of the cockpit.



Photo 7 - Supplied photo with a view of deformed skin near the junction of the fuselage and tail boom.



Photo 8 - Supplied photo with a view of deformed skin near the junction of the fuselage and tail boom.

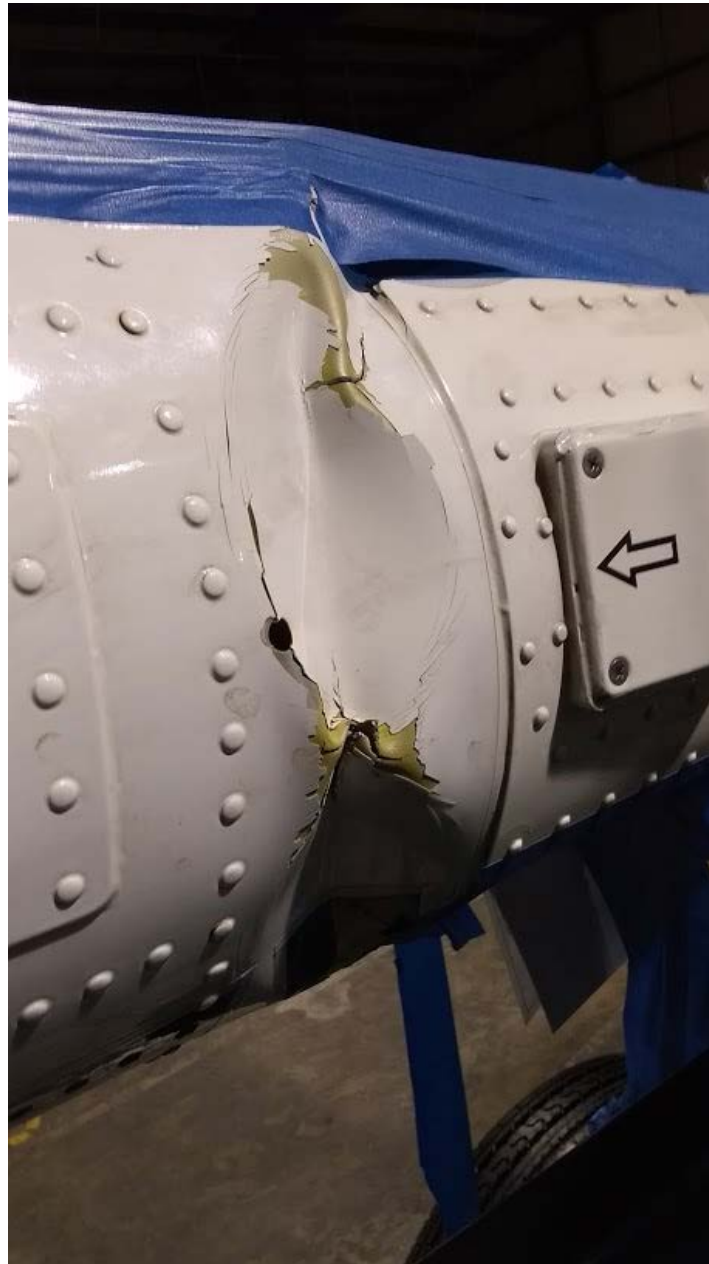


Photo 9 - Supplied photo with a view of deformed tail boom skin.

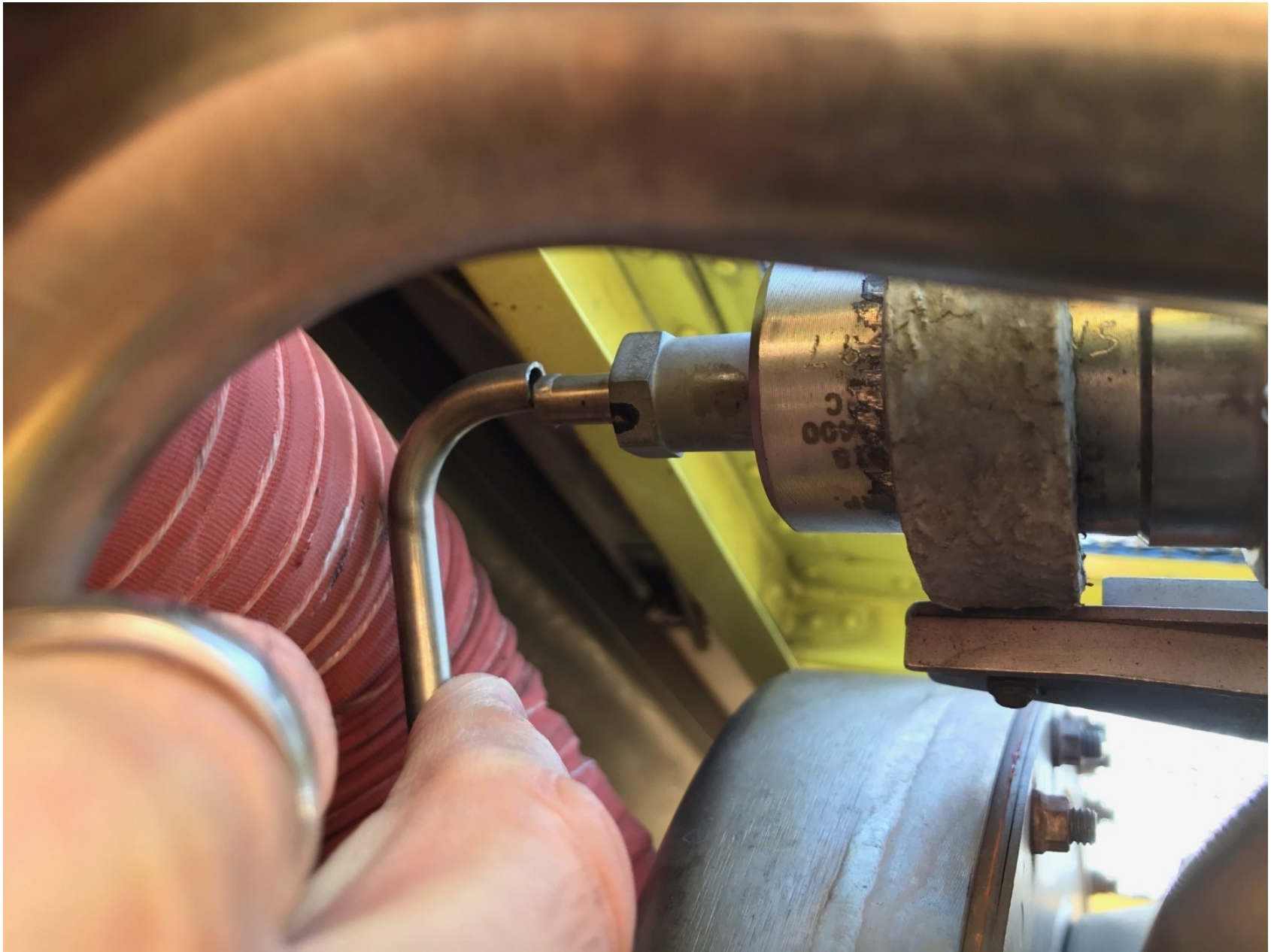


Photo 10 - Supplied photo with a view the Pc Line and its filter. There is a separation in the pneumatic line.



Photo 11 - Supplied photo with a view the Pc Line and its filter. There is a separation in the pneumatic line.



Photo 12 - Supplied photo with a view the Pc Line part number.



Photo 13 - Supplied photo with a close-up view the separation in th Pc Line.