



Photo 1 – Supplied photo of the accident site.



Photo 2 - View of the left side of the airplane at the accident site.



Photo 3 - View of the front side of the airplane at the accident site. Broken branches are present on the tree in the background.



Photo 4 - View of the right side of the airplane at the accident site.



Photo 5 - Close up view of the right side of the airplane at the accident site.



Photo 6 - View of the right rear side of the airplane at the accident site.



Photo 7 - Close up view of the inboard left wing.



Photo 8 - View of the cabin area.



Photo 9 - Close up view of the inboard right wing.



Photo 10 - Close up view of the engine embedded in terrain.



Photo 11 - Close up view of the right rear empennage.



Photo 12 - Close up view of the right wing.



Photo 13 - View of the engine controls.



Photo 14 - View looking aft of the inside of the rear fuselage and empennage.



Photo 15 - View of the lower center section of the fuselage.



Photo 16 - View of the engine during recovery.



Photo 17 - View of the propeller during recovery.



Photo 18 - Close up view of the right rear side of the empennage with panels removed.



Photo 19 - Close up view of the trim jackscrew.



Photo 20 - View of the engine as received for examination.



Photo 21 – View of the engine mounted on a disassembly stand.



Photo 22 - Close up view of the engine driven fuel pump and its intact coupling.

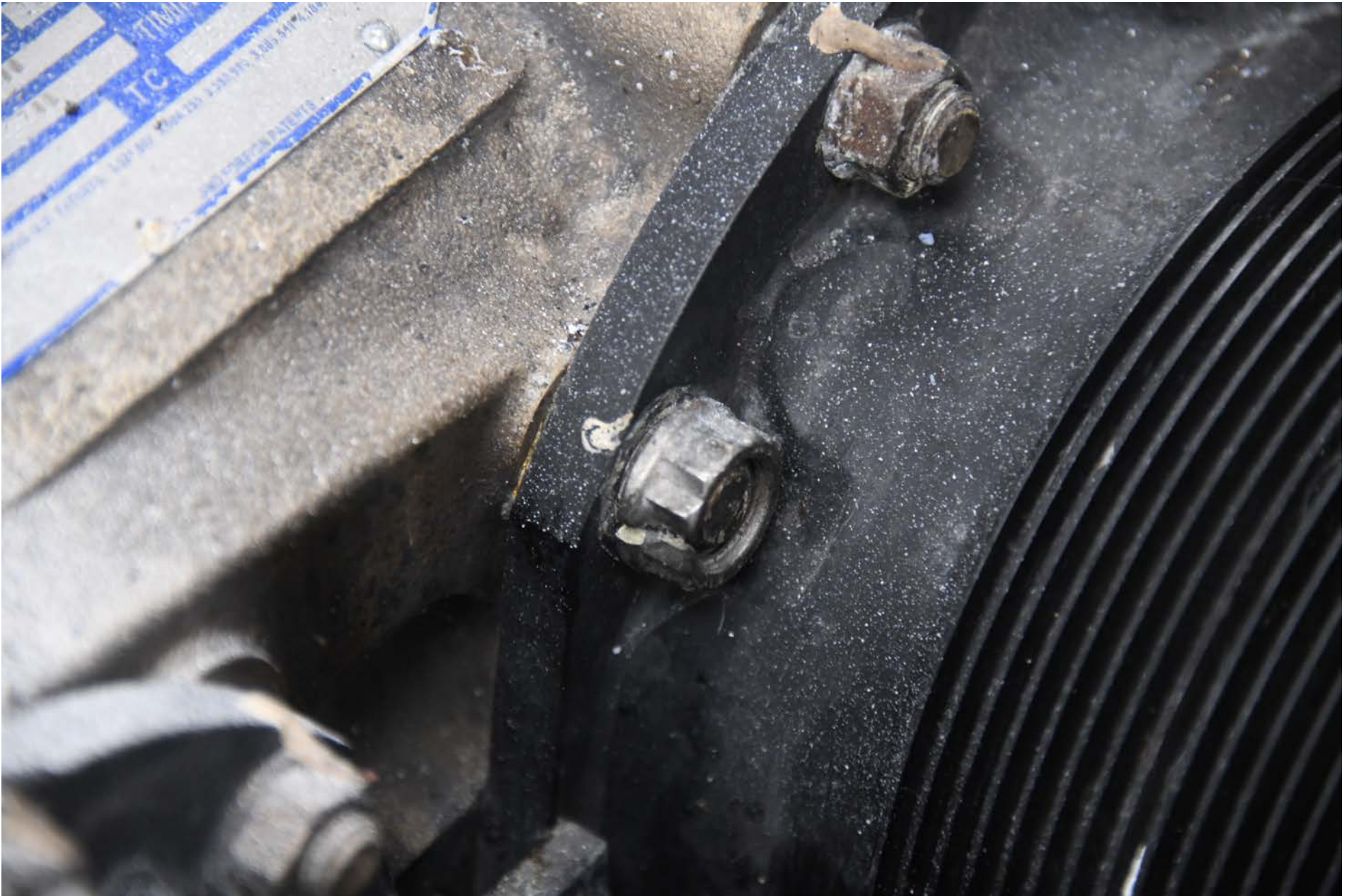


Photo 23 - Close up view of an engine cylinder base nut. The nut is split consistent with being exposed to heat.



Photo 24 - Close up view of the even bank of engine cylinders.



Photo 25 - Close up view of the odd bank of engine cylinders.



Photo 26 - View of the engine with the oil sump pan removed.



Photo 27 - View of removed sparkplugs.



Photo 28 - View of removed magnetos.



Photo 29 - Close up view inside removed cylinders.



Photo 30 - Close up view inside removed cylinders.



Photo 31 - View inside the crankcase. The crankshaft and connecting rods are present.



Photo 32 - View inside the crankcase.

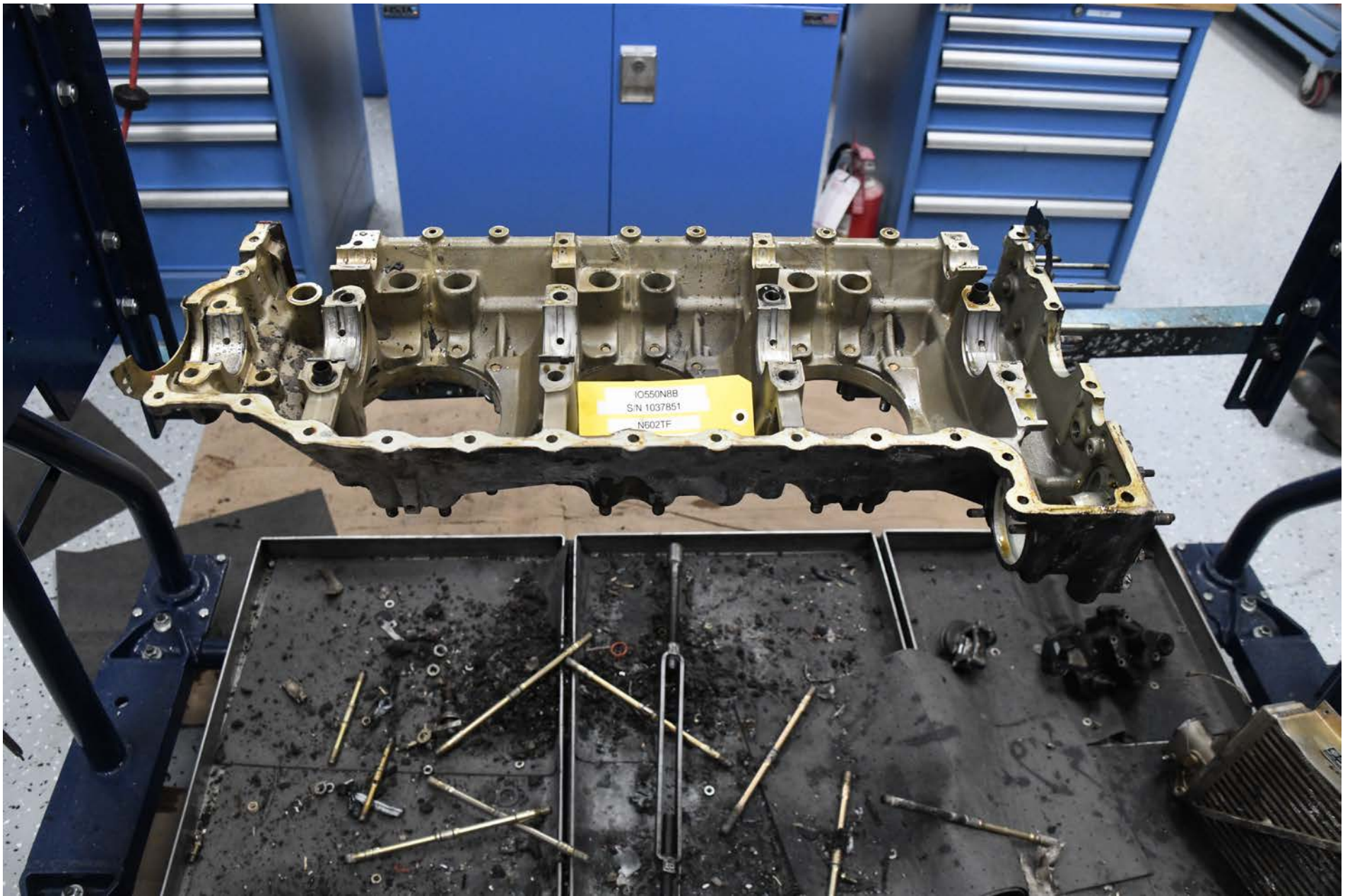


Photo 33 - View inside the crankcase with the crankshaft removed.



Photo 34 - View of the crankshaft and camshaft.



Photo 35 - View of the disassembled engine oil pump.



Photo 36 - View of the disassembled engine crankshaft and connecting rods.



Photo 37 - View of the disassembled engine oil filter.



Photo 38 - View of the disassembled engine during its return shipment.



Photo 39 - View of the disassembled engine during its return shipment.

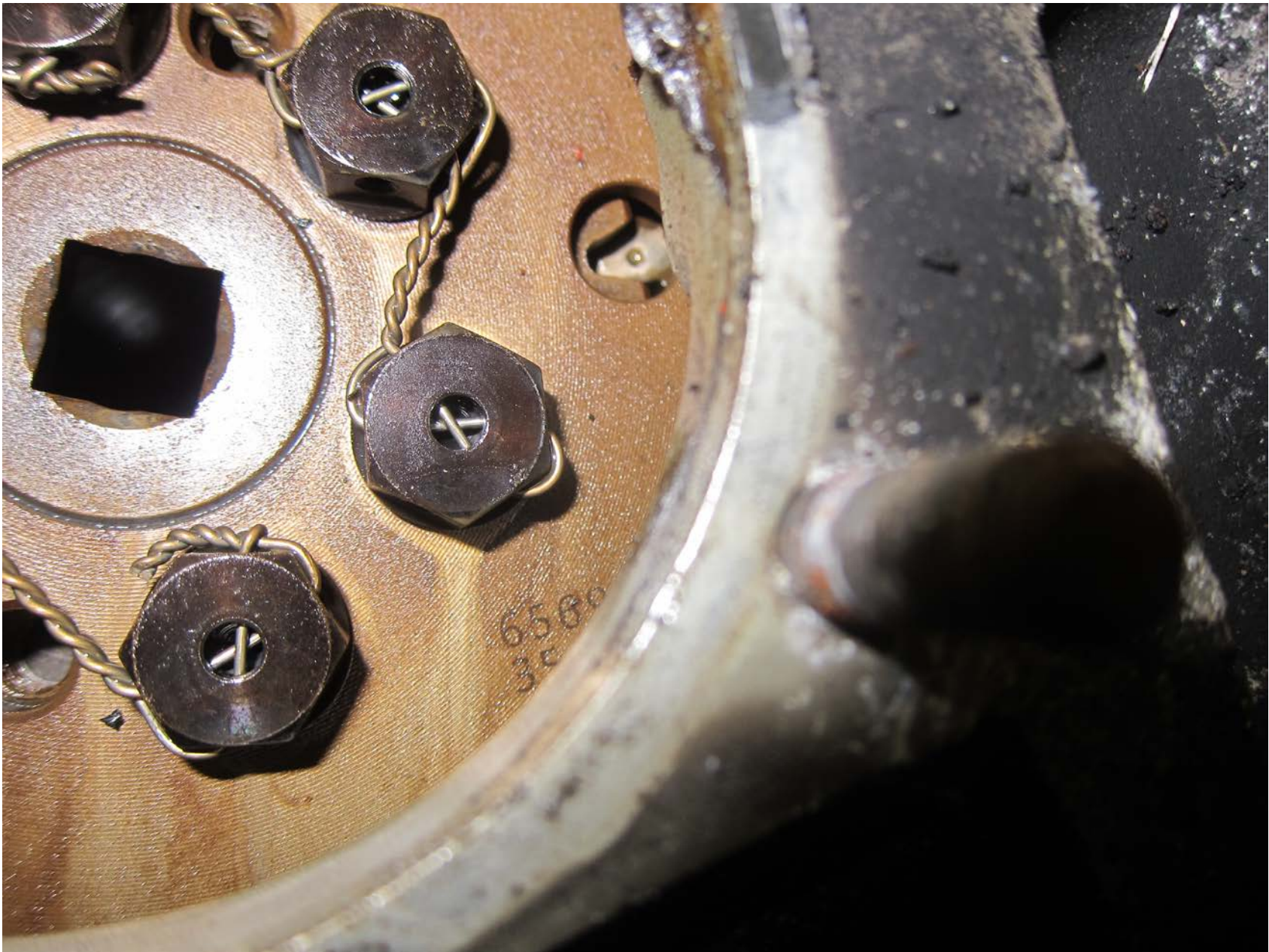


Photo 40 - Supplied close up view of the timing mark between gear teeth.