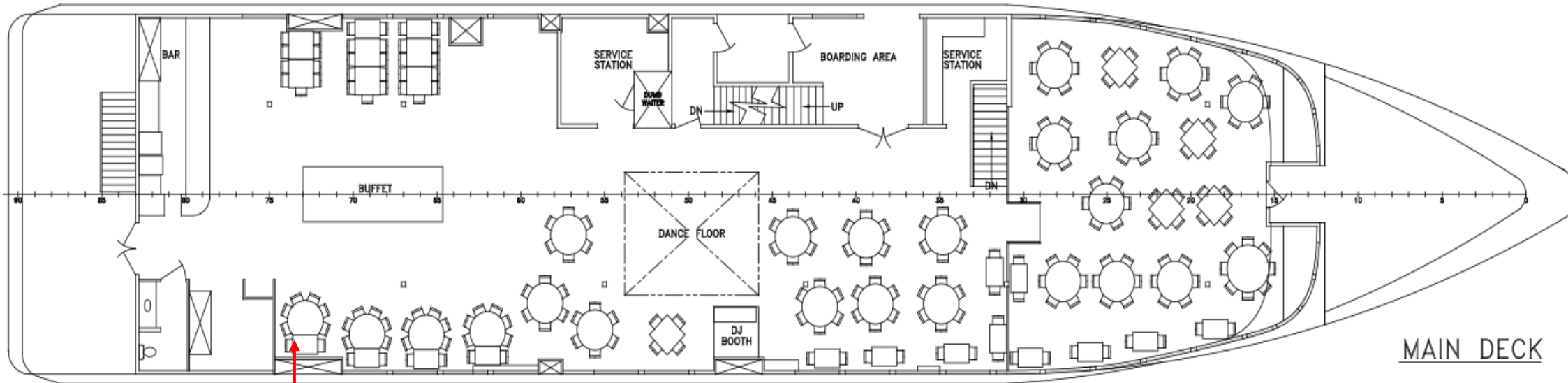
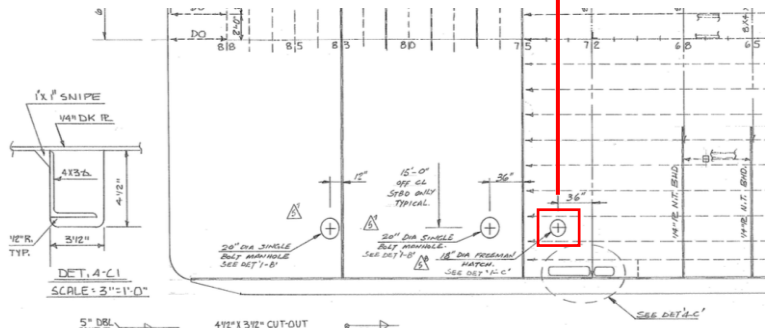


Spirit of Norfolk Dewatering Plan

Location of the Hatch



MAIN DECK



Spirit of Norfolk Dewatering Plan



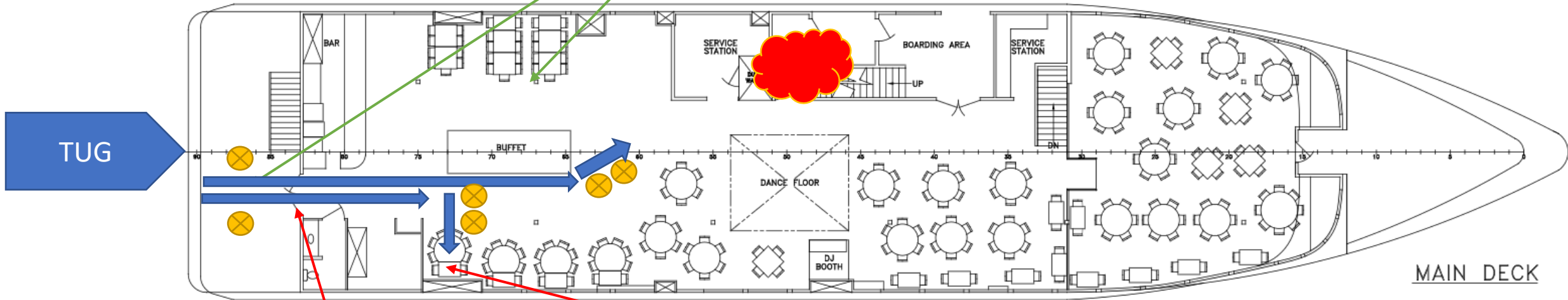
Entry Plan

Rescue Swimmer (2)
Vessel

Personnel Entry Plan – 3 Man Team
20 to 25 Feet Ingress and Exit

Entry Team

- (2) Safety Tender
- (2) Fire Block Team
- (2) Hatch Team



Entry Go/No-Go

If active fire, can it be knocked down via hand nozzle in less than 5 mins:

- If yes, proceed to stern hatch.
- If no, abort.

Stern Hatch Approach Go/No-Go

When adjacent to the hatch, team will fog the hatch to see if it produces steam.

- If hatch produces steam, abort,
- If no, open the hatch.

Stern Hatch Go/No-Go

When opening the hatch, open slowly (cracking open), if there is fire inside the hatch when opened, close the hatch if at all possible

Spirit of Norfolk Dewatering Plan

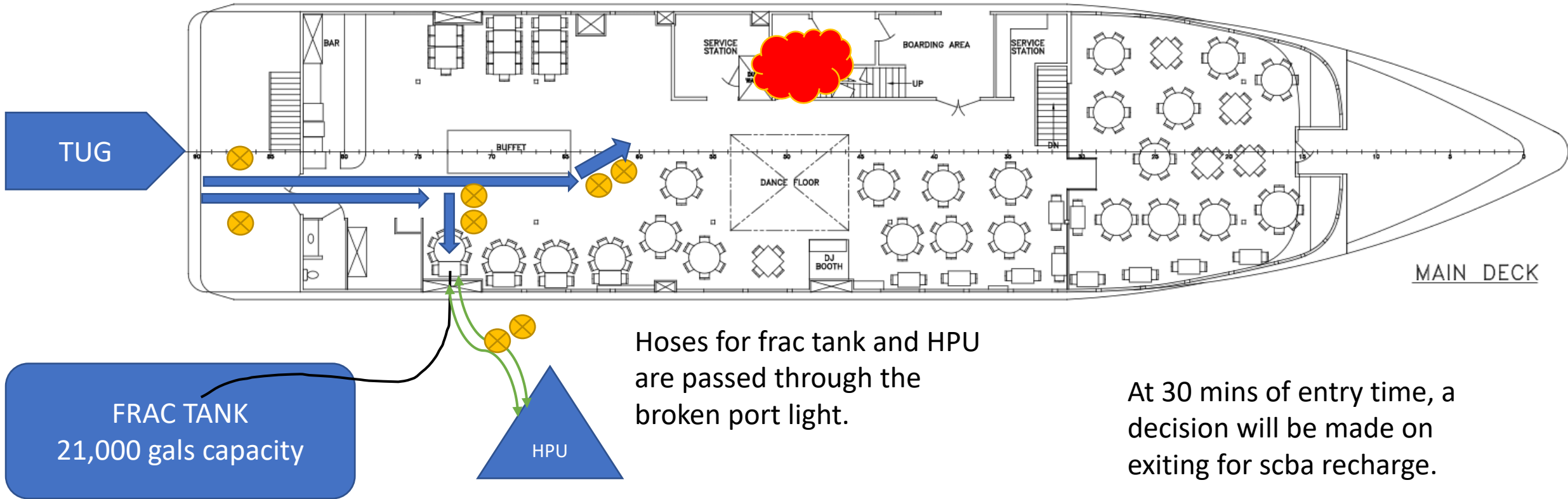


Pump Installation

Rescue Swimmer Vessel

Personnel Entry Plan

20 to 25 Feet Ingress and Exit



Hoses for frac tank and HPU are passed through the broken port light.

At 30 mins of entry time, a decision will be made on exiting for scba recharge.

Will impose the following vessel limits:

- Maintain heel less than 4.5 degrees,
- Trim less than 3 aft,
- No more than 75% capacity in the ER-Galley (estimated),
- Draft less than 11'-9" on port aft.